



ISC OWWTIMS
SUKSES BERSAMA
CATALOG



WHO WE ARE?

PT ISC OWWTIMS Sukses Bersama that specializes in the business of providing animal feed especially in noodle waste. We have been specialize in this business in Indonesia since 2015 which has successfully exported to more than 100 countries and load 50 containers/week. We have been exporting noodle waste to all major market around the world such as Taiwan, US, India, Malaysia, and Vietnam.

VISION AND MISSION

Gives quality product for export to overseas sustainably

Increasing the number of successful new exporters helps the Indonesian economy to grow above average



WHAT WE DO?

PT ISC OWWTIMS Sukses Bersama exists to serve and provide only the best noodle waste with cost efficiency to our customers. Noodle waste is a less expensive option to feed your livestock. It provides protein and offers adaptability for feeding. This product contains significant amounts of starch and oil that are good for the livestock for their energy source and can be applied to all kinds of cattle. It is highly recommended to store noodle waste in a bag to protect against bacterial contamination & foreign objects.



PRODUCT



NOODLE WASTE

THE ADVANTAGES

1. Fast Energy Source:

- noodles certainly provide a fast source of energy because they can be easily absorbed by the animal's body.

• 2. Fast Recovery:

- In stressful situations or after intense physical activity, noodles can also help in fast energy recovery.

• 3. Blood Glucose Stabilization:

- noodles can help maintain blood glucose levels.

• 4. Efficient Utilization:

- Animals can efficiently use Sewage noodles as an energy source.

• 5. Performance Improvement:

- In some cases, feeding waste noodles can contribute to improved animal performance, especially in situations that demand additional energy.

- **6. Ease of Digestion:**

- noodle waste can be easily digested by the animal's digestive system.

- **7. *Quick Availability:**

- In emergency situations or instant energy needs, noodles can provide a quick solution.

- **8. Use by Ruminants:**

- In feed for ruminants, noodle waste can be used to support the rumen fermentation process.

- **9. Addition to Concentrate Feed:**

- noodle waste can be added to concentrate feed to increase its energy value.

- **10. Glycogen Formation:**

- Noodles can also be used by animals to form glycogen, which is an energy reserve in the animal's body.

- **11. Supports Growth:**

- In some situations, giving noodles can support animal growth, especially during intense growth phases.

- **12. Use in Animal Health Products:**

- fresh noodles can be used in animal health product formulations to support recovery after illness or surgery

- **13. Improves Palatability:**

- In some cases, the addition of noodle waste can increase the appeal of the feed and increase its palatability.

- **14. Use in Seed Products:**

- noodle waste can be used in feed formulation to support the production of quality seeds.

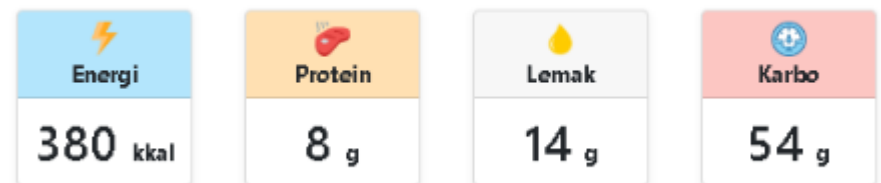
- **15. Adjustment of Feed Formulation:**

- noodle waste provides a cooling agent in adjusting feed formulation to meet the energy needs of different animals.

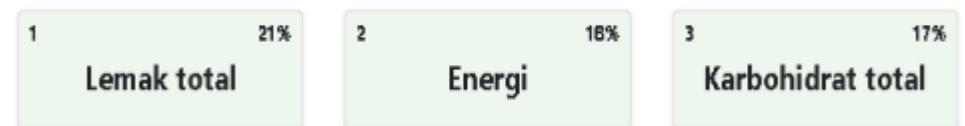
NUTRITION FACTS?

INFORMASI NILAI GIZI		
Takaran saji 100 g		
JUMLAH PER SAJIAN		
Energi Total		380 Kkal
		% AKG*
Lemak Total	14 g	21%
Kolestrol	0 g	0%
Lemak Jenuh	7 g	36%
Protein	8 g	13%
Karbohidrat Total	54 g	17%
Serat Pangan	2 g	8%
Gula	8 g	8%
Garam (Natrium)	1070 mg	
Vitamin dan Mineral		
Vitamin A		25%
Vitamin B1		35%
Vitamin B6		25%
Vitamin B12		45%
Niasin		30%
Asam Folat		30%
Asam Pantotenat		15%
Zat Besi		25%
*Persen AKG berdasarkan kebutuhan energi 2150 Kkal. Kebutuhan energi anda mungkin lebih tinggi atau lebih rendah.		

Ringkasan Gizi



Zat Gizi Unggulan Dalam Produk Ini



- **Composition :**

Wheat flour, vegetable oil, tapioca flour, salt, stabilizer, acidity regulator, minerals (iron), dyes (tartrazine CI 19140), antioxidant (TBHQ)

ORGANOLEPTIC TEST

Parameter	Instant Noodle		
	Treatment Best (A ₁ B ₂)	Treatment Worst (A ₂ B ₁)	Control
Physical Characteristic			
volume expansion coefficient (/ ° C)	0.0542	0.0505	0.0391
volume expansion (cm ³)	6464.07	5905.42	6723.41
water absorption (%)	247.92	228.75	212.49
yield (%)	74,078	62,563	67,265
heat specific (kJ / kg ° C)	1.647	1.682	1.662
Chemical Characteristic			
water level (%)	7,411	8,617	7,936
ash level (%)	1,673	1,838	1,751
fat level (%)	1,759	2,498	1,474
proteins level	5,311	5,232	5,993
carbohydrate level (%)	83,846	81,816	82,846
Organoleptic			
Odor	4.35	3.85	4.70
Colour	4.85	4.00	5.45
Texture	5.00	3.90	4.50
Taste	4.85	3.55	4.8

TESTIMONIALS



This feed not only improves animal feed but also the meat quality. I am very happy with this product.



The manure from consuming this noodle feed makes my livestock denser and looks very good for re processing.



RONNY SINGH

After switching to this feed for years, my livestock maintenance costs have decreased and my profits have increased, it is very efficient feed.

CONTACT US
FOR ANY QUERY
OR QUESTIONS

● **HEAD OFFICE**

Jl. Arya Kemuning No.89
Tangerang, 15131
Indonesia
[@owwtims.official](https://www.instagram.com/owwtims.official)
www.owwtims.com

