

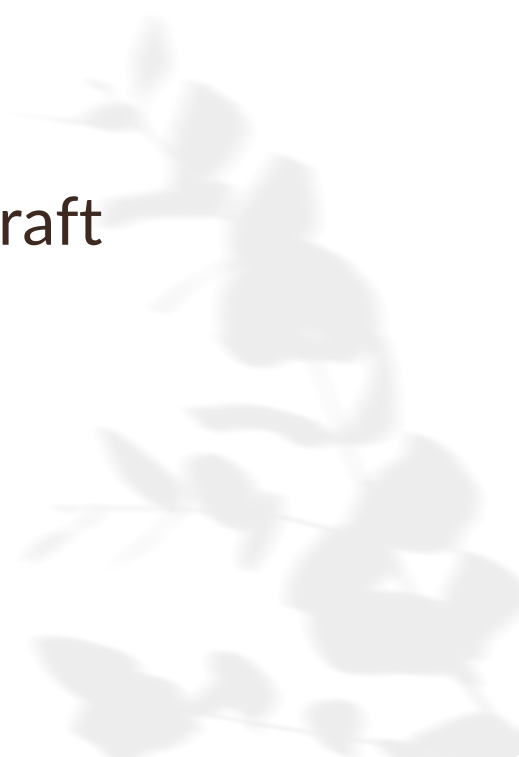


# SIMETRIS ASIA ROTAN

## Company Profile

Indoor and Outdoor Rattan, Wood, Rope, Metal & Aluminum, Synthetic Furniture and Handy Craft

[www.simetrisasiarotan.com](http://www.simetrisasiarotan.com)





# Table of Contents

About Company  
Product Range  
Our Market Plan  
Our Factory Management  
Our Factory  
Contact Information





# This is about Our Company

Over the years, furniture is a necessity for human life. With the best service, our product will represent an elegance and timeless furniture.





# This is about Our Company

We proudly present Simetris Asia Rotan, furniture and handy craft manufacturer and exporter, passionate about creating beautiful and functional spaces for our customer.

Our factory is located in the bustling industrial district of Cirebon, West Java, Indonesia, as the central production of rattan.



# This is about Our Company

Simetris Asia Rotan offers an extensive range of furniture pieces, carefully curated to cater to diverse tastes and preferences. Our collection includes indoor and outdoor furniture and handy craft to fit up a dining room, living room, bedroom, terrace, and outdoor. We responsibly source quality materials such as natural rattan, wood, rope, metal & aluminum, banana, kubu grey, water hyacinth, and synthetic.

To match a various kinds of models, we offer customization options to make your own chair, sofa, coffee and side table, headboard, cabinet, mirror, stool, daybed, lounge, wall décor, planter, basket, pet bed, and pendant lamp.

We take immense pride in our rich heritage of craftsmanship and commitment to delivering exceptional furniture pieces.



## Payment System :

- (1) TT with deposit 30% and the rest 70% after copy BL; or
- (2) LC at sight

## Lead Time Production :

45 - 60 days after confirmed deposit payment

**Job Qualification** : Manufacturer & Exporter Furniture

**Product Range** : Indoor and Outdoor Furniture

**Type of Product** : Natural Rattan, Wood, Rope, Metal & Aluminum Synthetic Furniture and Handy Craft



# Product Range

Indoor and Outdoor Furniture :

- Living Set
- Dining Set
- Bed Set
- Terrace Set
- Lounge Chair

and other furniture, with the following materials :

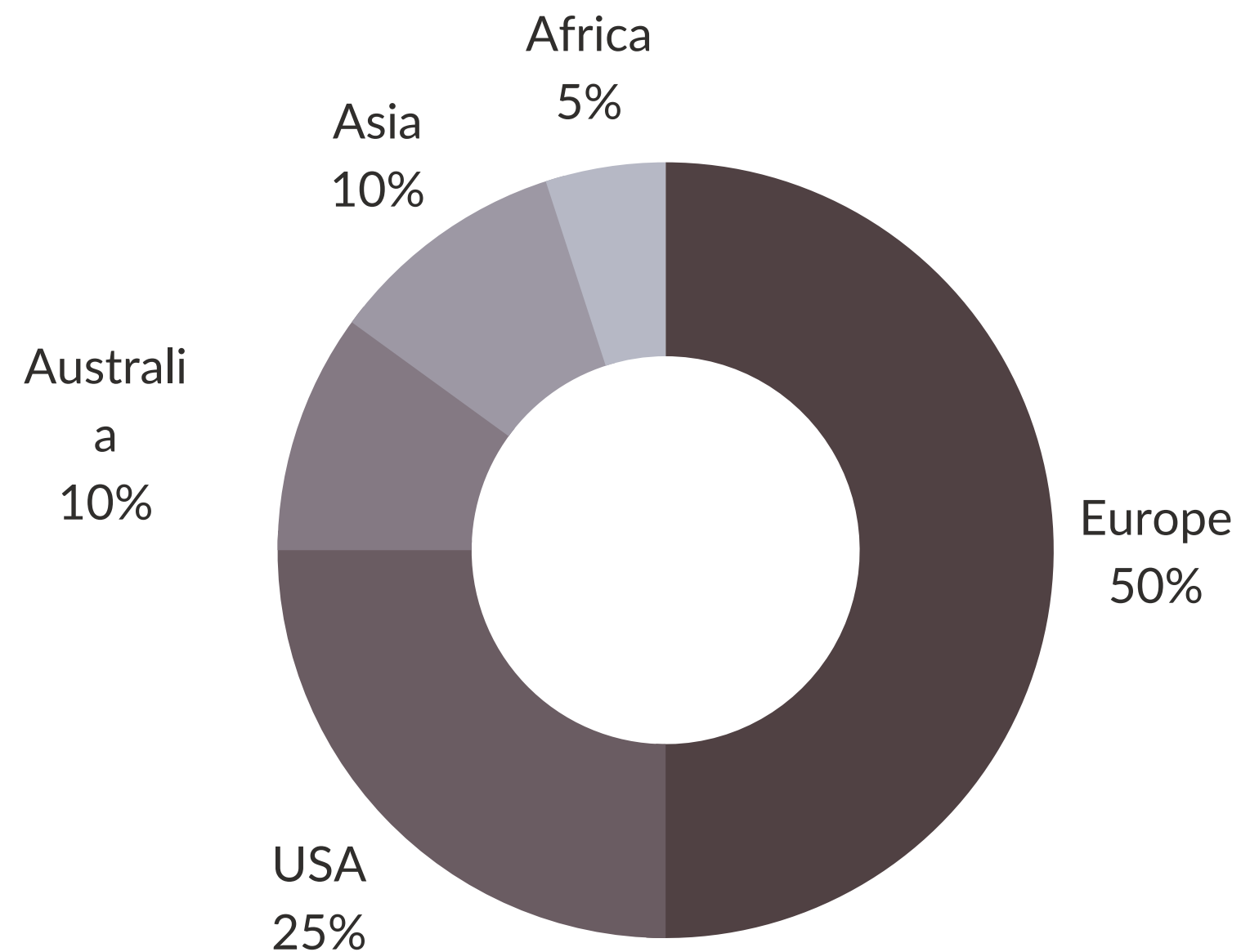
- Natural Rattan
- Wood
- Banana
- Kubu Grey
- Water Hyacinth
- Aluminum
- Metal
- Rope
- Synthetic
- Bamboo





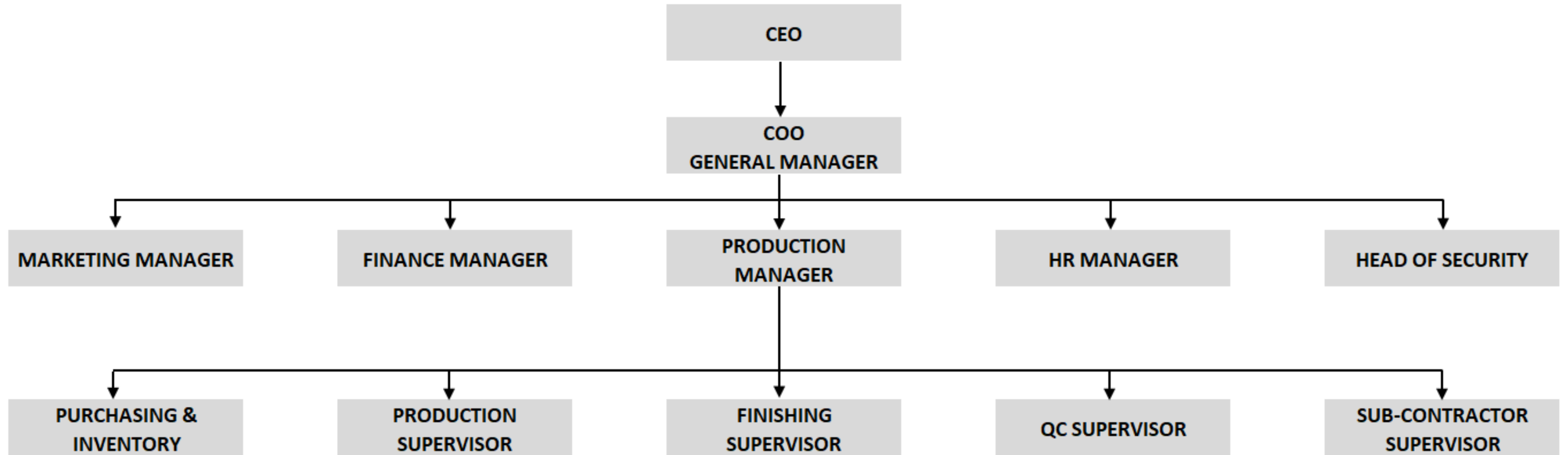
# Our Market Plan

Our market destination to various parts of the world. To Europe, USA, Australia, Africa, and Asia.





# Our Factory Management



Factory Area : 6.400 m<sup>2</sup>

Building/Warehouse : 4.200 m<sup>2</sup>

Number of Workers : 44 persons

Production Capacity : 20x40HC

Minimum Order Quantity (MOQ) : 1x20FT

# Our Factory





# Our Factory



# Contact Information

## PHONE NUMBER

+62 857 2229 9588

## EMAIL ADDRESS

info@simetrisasiarotan.com

## ADDRESS

Jalan Pangeran Antasari No. 88B, Purbawinangun - Plumbon  
West Java - Indonesia

## WEBSITE

www.simetrisasiarotan.com

## SOCIAL MEDIA

 simetrisasiarotan

 Simetris Asia Rotan

 Simetris Asia Rotan

