



# COMPANY PROFILE

## DOWNSTREAM TEA INDUSTRY

### PT PERKEBUNAN NUSANTARA VIII



[WWW.TEHWALINI.COM](http://WWW.TEHWALINI.COM)





# ABOUT

PT Perkebunan Nusantara VIII (PTPN VIII) is a state-owned enterprise engaged in Agribusiness sector. Our business covers on-farm and off-farm activities of 3 main commodities; tea, rubber and palm oil. We produce high quality commodities and services. Therefore, we have strong believes that our product can meet consumer's need and compete in the worldwide market.





## INTRODUCTION

---



# VISION

To become a prominent and trusted agribusiness company that prioritizes customer satisfaction and concerns for the environment, supported by professional human resources.

# MISSION

- Producing eco-friendly and high quality products which have high value, as demanded by the market.
- Applying good governance and strong leadership, treating human resources as main partners and assuring their welfare through corporate wellness.
- Optimizing all resources to develop business opportunities independently or through cooperation with strategic partners
- Promoting *Corporate Social Responsibility (CSR)* in line with company's growth.



# PRODUCT CERTIFICATE



**FDA CERTIFICATE**



**UTZ CERTIFICATE**



**RAINFORREST ALLIANCE (RA)**



**HALAL CERTIFICATE**



**PROPER CERTIFICATE**



**ISO 9001 : 2015**



**ISO 22000 : 2005**



**ISO 14000 : 2015**



**SNI ISO 9001 : 2015**



# WORK AREA MAP OF PTPN VIII



**113.958,34** Hectares

Concession Area

**2** Provinces

West Java & Banten

**2** Business Units

Industri Hilir Teh (IHT)  
Agrowisata

**34** Plantation Units

Tea : 19 Plantations, 22 Factories  
Rubber : 12 Plantations, 7 Factories  
Palm oil : 10 Plantations, 2 Factories



**13** States

Kab. Lebak (2 Plantations)  
Kab. Bogor (3 Plantations)  
Kab. Sukabumi (6 Plantations)  
Kab. Cianjur (4 Plantations)  
Kab. Pandeglang (1 Plantation)

Kab. Bandung (9 Plantations)  
Kab. Bandung Barat (1 Plantation)  
Kab. Purwakarta (1 Plantation)  
Kab. Subang (4 Plantations)

Kab. Garut (5 Plantations)  
Kab. Tasikmalaya (1 Plantation)  
Kab. Ciamis (1 Plantation)  
Kota Bandung (2 Business Units)

## NOTE

- Tea
- Rubber
- Palm Oil



19

## Tea Plantation Units

PTPN VIII manages 19 tea plantations on 19.000 hectares productive land, located across 6 districts and cities. It is about 16,5% of entire plantation area of PTPN VIII. With that large productive area, PTPN VIII becomes the largest tea company in Indonesia.

PTPN VIII operates 17 Orthodox and 5 CTC Factories. For us, customer trust is a priority that has to be maintained continuously. Therefore, we have implemented Quality Management System (ISO 9001:2015), Food Safety Management System (ISO 22000:2005), Sustainable Agriculture Systems (Rainforest Alliance and UTZ). Other certificates that have been implemented are Halal Certificate from The Indonesia Council of Ulama and US Food & Drug Administration.

● **18.799,94 Ha**  
Tea Plantation Area

## 19 Plantations & 22 Factories

- |                  |                        |
|------------------|------------------------|
| 🌿 Malabar        | ✂️ Cisaruni/Manggung   |
| 🌿 Kertamanah     | 🌿 Panyairan/Pasirangka |
| 🌿 Pasirmalang    | 🌿 Tambaksari           |
| 🌿 Purbasari      | ✂️ Panglejar           |
| ✂️ Talun Santosa | 🌿 Gedeh/Mas            |
| ✂️ Sedep         | 🌿 Montaya              |
| ✂️ Rancabali     | 🌿 Goalpara             |
| 🌿 Rancabolang    | 🌿 Papandayan           |
| 🌿 Sinumbra       | ✂️ Ciater/Buna         |
|                  | 🌿 Cianten              |

### NOTE:

- 🌿 Plantation
- 🏭 1 Factory
- ✂️ 2 Factory





## Orthodox Tea

A black tea which is processed using traditional method and generally has stronger flavor than the other types of tea. It is a time-consuming method of production where tea leaves remain whole or only partially broken during the process.



## CTC Tea

A black tea processing method where the leaves are passed through a series of cylindrical rollers with hundreds of sharp teeth that crush, tear, and curl the leaves into small, hard pellets.



## White tea

Harvested before the leaves fully open. This is one of the most delicate tea varieties, because the tea is processed very minimally.







**BOP1SP**  
Broken Orange Pekoe



**BP1**  
Broken Pekoe



**BOP1**  
Broken Orange Pekoe 1



**BOP**  
Broken Orange Pekoe



**PF**  
Pekoe Fanning



**DUST**  
Dust



**SILVER NEEDLE**



**BP**  
Broken Pekoe



**BT**  
Broken Tea



**PD**  
Pekoe Dust



**PF1**  
Pekoe Dust 1



**FANN**  
Fanning



**D1**  
Dust 1



**WHITE PEONY**





# DONWSTREAM TEA INDUSTRY

[WWW.TEHWALINI.COM](http://WWW.TEHWALINI.COM)

The Downstream Tea Industry (IHT) Unit formed to process bulk tea into consumer's goods. IHT has a special blend for teabag and bulk tea with marketing networks covering 19 provinces in Indonesia.

IHT produces 3 brands: **Walini**, **Goalpara** and **Gunung Mas**. In addition, IHT also provides toll manufacturing service (white label system) for loose tea and teabag for the needs of local producers and exporters according to the buyer needs.



01



02



03





PRODUCT  
CERTIFICATE



**Ethical Tea  
Partnership**



PIAGAM BINTANG DUA  
KEAMANAN PANGAN



**BADAN POM**





  
**WALINI<sup>®</sup>**

*Alami dari daun teh pilihan*

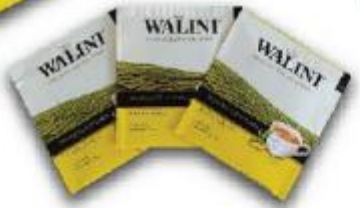
[WWW.TEHWALINI.COM](http://WWW.TEHWALINI.COM)







**Master carton (Weight 2,16 kg)  
Contained 48 boxes  
1 Box (Weight 45 grams)  
Contained 25 tea bags @ 1,8 grams  
Envelope : Every single tea bag packed inside envelope to keep it fresh. Also make practically served.**



**Master carton (Weight 2,16 kg)  
Contained 48 boxes  
1 Box (Weight 45 grams)  
Contained 25 tea bags @ 1,8 grams  
Non Envelope : Packed inside aluminum foil to keep the freshness.**



**White Tea  
Silver Needle  
50 grams**



**Green Tea  
50 grams**



**Black Tea  
50 grams**

“Premium Loose-leaf tea which packed with 3 flavors according to your taste”  
Black Tea, White Tea and Green tea

[WWW.TEHWALINI.COM](http://WWW.TEHWALINI.COM)





BP1 (Broken Pekoe 1) is Walini's specialty product. It is processed with CTC (Cutting, Tearing and Curling) method that makes BP1 have a very strong taste and special color character. Therefore, BP1 is suitable to be served by mixing it with milk. The biggest purchase of BP1 so far is by Middle East countries.







BANGGA BUATAN  
INDONESIA



# GOALPARA

EST 1900

Secangkir Semangat Goalkan Harimu



**Gunung Mas**

PUNCAK-CISARUA

*Nikmat dan Segar...*



*“Vintage Black Tea that has been known since 1900 with special taste and packed with three packaging variants”*

*“Goalpara, Secangkir Semangat Goalkan Harimu”*



Black Loose Tea  
250 gr

Black Loose Tea  
50 gr



COMMUNITY

UMKM

DOWNSTREAM TEA INDUSTRY

HORECA

MODERN TRADE  
GENERAL TRADE  
E-COMMERCE

**MODERN TRADE**

*Clandy's*  
Grosir

 **LOTTE Grosir**

  
BANGGA BUATAN  
INDONESIA

  
**LOTTE Mart**  
*Belanja tepat pas di hati*

**BORMA**  
T O S E R B A

  
**SUPER  
INDO**

*Lulu*   
PREPARED | FRESH | CONVENIENCE STORES  
*Belanja yang lebih cerdas & lebih cepat*

 T O S E R B A  
**YOGYA**

 **HARI HARI**  
PASAR SWALAYAN

 **Alfamidi**

 T O S E R B A  
**GRIYA**

**NAGA** PASAR SWALAYAN  
*Selalu harga murah*

 SETIABUDHI  
SUPERMARKET

 **TIARA**  
*toserba*

 **YOMART**  
*Belanja Dekat & Hemat*

**TOKMA**  
T O S E R B A

 *Gelael*  
*Pasar Swalayan*





Buka aplikasi **Shopee**  
Pastikan toko yang anda pilih  
"Walini Official Shop"



kemudian pilih varian  
favoritmu dan  
"Beli Sekarang"



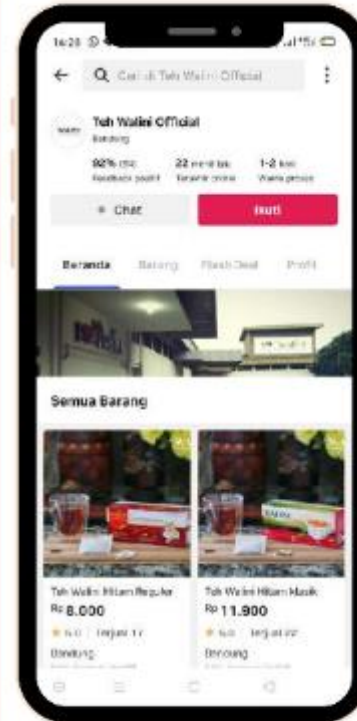
Buka aplikasi **Tokopedia**  
Pastikan toko yang anda pilih  
"Pabrik Walini-Goalpara"



kemudian pilih  
varian favoritmu  
dan "Beli"



Buka aplikasi **Bukalapak**  
Pastikan toko yang anda pilih  
"Teh Walini Official"



kemudian pilih  
varian favoritmu  
dan "Beli Sekarang"



# AMAZON CANADA



ARCHIPELAGO ENGLISH BREAKFAST TEA - 25 TEABAGS | INDONESIAN PREMIUM TEA

Brand: ARCHIPELAGO

Price: **\$6.98** (SG.98 / Pack)

Tea variety	Black
Brand	ARCHIPELAGO
Form	Teabags
Units	1.00 Pack

**About this item**

- A fascinating Java's authentic black tea with bergamot oil
- This classic blend is high in antioxidant and outstandingly flavorful
- Proudly imported from Indonesia
- Origin: Malabar Mountain, West Java, Indonesia
- 25 individual tea bags in 1 pouch

[See more product details](#)

ARCHIPELAGO JASMINE TEA - 25 tea bags | INDONESIAN PREMIUM TEA

Brand: ARCHIPELAGO

Price: **\$6.98** (SG.98 / Pack)

Tea variety	Black
Brand	ARCHIPELAGO
Flavour	Jasmine
Form	Teabags
Units	1.00 Pack

**About this item**

- Proudly imported from Indonesia
- Origin: Prlangan highlands, West Java, Indonesia
- Traditional mixture of black tea and floral jasmine scent will refresh and balance your mood.
- Premium black tea, scented jasmine
- 25 individual tea bags in 1 pouch

[See more product details](#)





# TOLL MANUFACTURING SERVICE

We provide **TOLL  
MANUFACTURING SERVICE**  
for teabag and loose-leaf tea.





# THANK YOU

**JI. RAYA PANYILEUKAN NO. 1  
CIBIRU – BANDUNG**

**Email : [cs@tehwalini.com](mailto:cs@tehwalini.com)**

**Telp : +62 22 – 7830827**

**Fax : +62 22 – 7830826**

**INDONESIA**

## CONTACT PERSON

**SUGAMA – MANAGER (+6252 – 2167 – 5870)**

**DETI – MARKETING (+62813 – 2116 – 7813)**

**HAFIDZ –MARKETING (+62859 – 1625 – 46500)**

[WWW.TEHWALINI.COM](http://WWW.TEHWALINI.COM)