



Plate clamp with safety lock model TBL

Capacity 500 - 3000 kg

This clamp is primarily used for transporting single steel plates in the vertical position, as well as lifting and turning through 180°. This clamp can also be used for transporting steel constructions and profiles. It is recommended to use a pair of plate clamps in conjunction with a spreader beam for large sized sheets and long materials which have a tendency to sag.

The jaw can be opened and closed with the locking lever (except for the TBL 0.5t which uses a positive spring-loaded cam). The safety lock overrides the spring-loaded cam, preventing the clamp from opening even when there is no load.

This plate clamp is service-friendly, making it easy to exchange parts, which are available individually or in kits. Clamp repair is available by the factory, or can be done by certified and experienced staff.

The TBL 0.5 is equipped with a safety lock (positive spring-loaded cam), but comes without locking lever.



The min. load is 10% of the nominal WLL!



Technical data model TBL

| Model | EAN-No. 4025092* | Capacity kg | Jaw capacity Z mm | Weight kg |
|---------|---------------------|----------------|----------------------|--------------|
| TBL 0,5 | *550000 | 500 | 0 - 16 | 1.5 |
| TBL 1,0 | *550017 | 1000 | 0 - 20 | 3.0 |
| TBL 2,0 | *550024 | 2000 | 0 - 32 | 9.3 |
| TBL 3,0 | *550048 | 3000 | 0 - 32 | 9.3 |

Dimensions model TBL

| Model | TBL 0,5 | TBL 1,0 | TBL 2,0 | TBL 3,0 |
|---------|---------|---------|---------|---------|
| A, mm | 99 | 126 | 192 | 192 |
| B, mm | 195 | 225 | 312 | 312 |
| Ø C, mm | 29 | 50 | 80 | 80 |
| D, mm | 33 | 49 | 75 | 75 |
| E, mm | 47 | 70 | 96 | 96 |
| F, mm | 50 | 82 | 100 | 100 |
| G, mm | 48 | 55 | 81 | 81 |
| H, mm | 11 | 12 | 20 | 20 |
| I, mm | 16 | 20 | 24 | 24 |

The surface hardness of the material must not exceed HRC 30/Brinell 300.

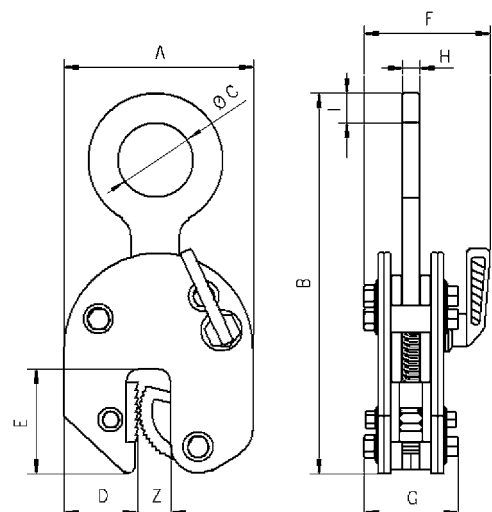


Plate clamp with safety lock model TBL

Capacity 4000 - 30000 kg

This clamp is primarily used for transporting single steel plates in the vertical position, as well as lifting and turning through 180°. This clamp can also be used for transporting steel constructions and profiles. It is recommended to use a pair of plate clamps in conjunction with a spreader beam for large sized sheets and long materials which have a tendency to sag.

These plate clamps have the same design and applications as the clamp model TBL with a capacity from 500 - 3000 kg.

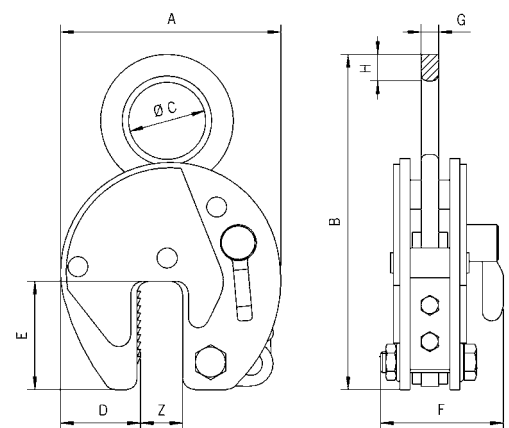
The surface hardness of the material must not exceed HRC 30/Brinell 300.



Technical data model TBL

| Model | EAN-No. 4025092* | Capacity kg | Jaw capacity Z mm | Weight kg |
|------------|------------------|-------------|-------------------|-----------|
| TBL 4,0 S | *556545 | 4000 | 0 - 32 | 11.2 |
| TBL 4,0 L | *556569 | 4000 | 30 - 60 | 11.9 |
| TBL 6,0 S | *557221 | 6000 | 0 - 50 | 20.6 |
| TBL 6,0 L | *556583 | 6000 | 50 - 100 | 23.2 |
| TBL 8,0 S | *557245 | 8000 | 0 - 50 | 24.2 |
| TBL 8,0 L | *557269 | 8000 | 50 - 100 | 28.8 |
| TBL 10,0 S | *557283 | 10000 | 0 - 50 | 29.5 |
| TBL 10,0 L | *557306 | 10000 | 50 - 100 | 35.1 |
| TBL 12,0 S | *557320 | 12000 | 0 - 50 | 52.1 |
| TBL 12,0 L | *557344 | 12000 | 50 - 100 | 63.0 |
| TBL 15,0 S | *552936 | 15000 | 0 - 50 | 76.0 |
| TBL 15,0 L | *552943 | 15000 | 50 - 100 | 86.0 |
| TBL 20,0 S | *552950 | 20000 | 0 - 65 | 123.0 |
| TBL 20,0 L | *551892 | 20000 | 65 - 130 | 135.0 |
| TBL 30,0 S | *552967 | 30000 | 0 - 65 | 195.0 |
| TBL 30,0 L | *552974 | 30000 | 65 - 130 | 256.0 |

The min. load is 10% of the nominal WLL!



Dimensions model TBL

| Model | TBL 4,0 S | TBL 4,0 L | TBL 6,0 S | TBL 6,0 L | TBL 8,0 S | TBL 8,0 L | TBL 10,0 S | TBL 10,0 L | TBL 12,0 S | TBL 12,0 L | TBL 15,0 S | TBL 15,0 L | TBL 20,0 S | TBL 20,0 L | TBL 30,0 S | TBL 30,0 L |
|---------|-----------|-----------|-----------|-----------|-----------|-----------|------------|------------|------------|------------|------------|------------|------------|------------|------------|------------|
| A, mm | 197 | 228 | 293 | 362 | 293 | 362 | 293 | 362 | 360 | 460 | 360 | 460 | 462 | 560 | 462 | 560 |
| B, mm | 339 | 339 | 442 | 482 | 450 | 482 | 503 | 503 | 550 | 615 | 550 | 615 | 674 | 724 | 667 | 732 |
| Ø C, mm | 80 | 80 | 89 | 89 | 89 | 89 | 110 | 110 | 130 | 130 | 130 | 130 | 130 | 130 | 60 | 60 |
| D, mm | 68 | 68 | 95 | 114 | 95 | 114 | 95 | 114 | 125 | 175 | 125 | 175 | 165 | 195 | 165 | 195 |
| E, mm | 93 | 100 | 143 | 143 | 143 | 143 | 143 | 143 | 162 | 162 | 162 | 162 | 210 | 210 | 210 | 210 |
| F, mm | 110 | 110 | 129 | 129 | 129 | 129 | 139 | 139 | 154 | 154 | 204 | 204 | 235 | 235 | 295 | 295 |
| G, mm | 20 | 20 | 20 | 20 | 20 | 20 | 25 | 25 | 30 | 30 | 45 | 45 | 45 | 45 | 65 | 65 |
| H, mm | 32 | 32 | 35 | 35 | 42 | 42 | 45 | 45 | 55 | 55 | 55 | 55 | 65 | 65 | 66 | 67 |



Plate clamp with hinged hook ring and safety lock model TBS

Capacity 1000 - 3000 kg

The TBS plate clamp with hinged hook ring can be used for the safe handling of plates at various angles. It can lift plates from the horizontal and put down in the vertical or alternatively lift it over the edge by gripping it from the side. The hinged hook ring ensures adequate clamping force in every position. Depending on the angle of usage capacity restrictions have to be taken into account, as shown in the diagram below.

The hinged hook ring has the added advantage of providing enough clamping force to hold a plate safely. Even when transporting large-sized plates with the 2-legged lifting system slipping of the load and damage to the clamp is avoided.

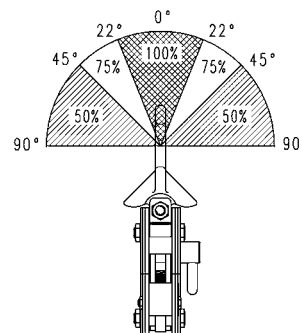
In addition to transporting plates, this clamp is suitable for turning steel structures and welded constructions.

The min. load is 10% of the nominal WLL!

The surface hardness of the material must not exceed HRC 30/Brinell 300.

Technical data model TBS

| Model | EAN-No. 4025092* | Capacity kg | Jaw capacity Z mm | Weight kg |
|---------|---------------------|----------------|----------------------|--------------|
| TBS 1,0 | *550031 | 1000 | 0 - 20 | 4.6 |
| TBS 2,0 | *550086 | 2000 | 0 - 32 | 14.3 |
| TBS 3,0 | *550079 | 3000 | 0 - 32 | 14.3 |



Dimensions model TBS

| Model | TBS 1,0 | TBS 2,0 | TBS 3,0 |
|---------|---------|---------|---------|
| A, mm | 126 | 192 | 192 |
| B, mm | 270 | 382 | 382 |
| Ø C, mm | 50 | 80 | 80 |
| D, mm | 49 | 75 | 75 |
| E, mm | 70 | 96 | 96 |
| F, mm | 95 | 132 | 132 |
| G, mm | 63 | 92 | 92 |
| H, mm | 12 | 20 | 20 |
| I, mm | 23 | 30 | 30 |

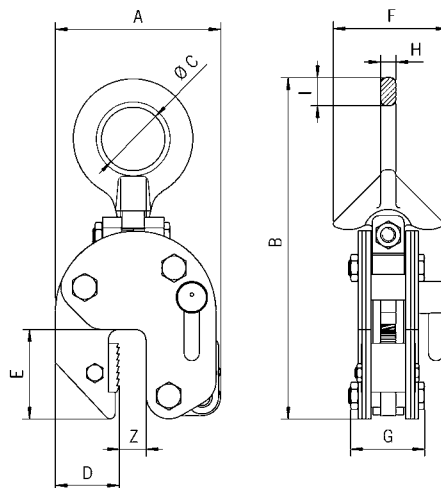
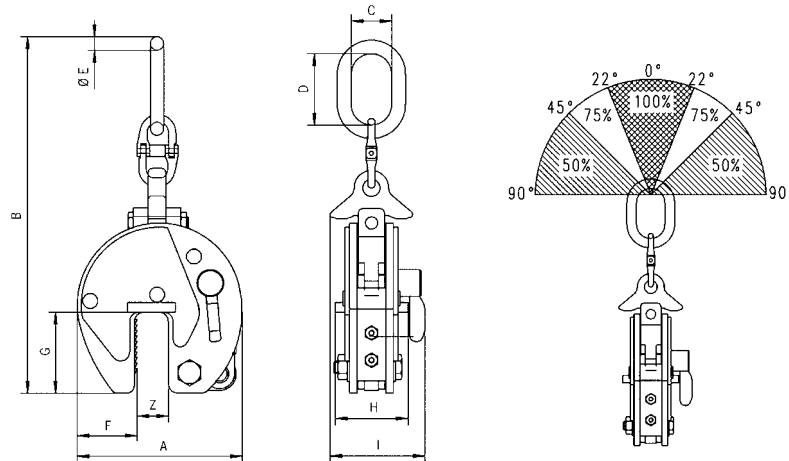


Plate clamp
with pivoting shackle and
safety lock
model TBS

Capacity 4500 - 10000 kg



The surface hardness of the material must not exceed HRC 30/Brinell 300.



The min. load is 10% of the nominal WLL!

Technical data model TBS

| Model | EAN-No. 4025092* | Capacity kg | Jaw capacity Z mm | Weight kg |
|------------|------------------|-------------|-------------------|-----------|
| TBS 4,5 | *550352 | 4500 | 0 - 50 | 34.4 |
| TBS 6,0 S | *550383 | 6000 | 0 - 50 | 38.0 |
| TBS 6,0 L | *551250 | 6000 | 50 - 100 | 42.0 |
| TBS 8,0 S | *552578 | 8000 | 0 - 50 | 39.0 |
| TBS 8,0 L | *557528 | 8000 | 50 - 100 | 42.4 |
| TBS 10,0 S | *552516 | 10000 | 0 - 50 | 68.0 |
| TBS 10,0 L | *557542 | 10000 | 50 - 100 | 80.0 |

Dimensions model TBS

| Model | TBS 4,5 | TBS 6,0 S | TBS 6,0 L | TBS 8,0 S | TBS 8,0 L | TBS 10,0 S | TBS 10,0 L |
|---------|---------|-----------|-----------|-----------|-----------|------------|------------|
| A, mm | 292 | 292 | 367 | 292 | 367 | 360 | 446 |
| B, mm | 675 | 737 | 785 | 737 | 785 | 903 | 921 |
| C, mm | 90 | 95 | 98 | 98 | 98 | 110 | 112 |
| D, mm | 180 | 176 | 180 | 176 | 180 | 195 | 195 |
| Ø E, mm | 27.8 | 27.8 | 27.8 | 27.8 | 27.8 | 33 | 33 |
| F, mm | 95 | 95 | 115 | 95 | 115 | 125 | 168 |
| G, mm | 143 | 143 | 143 | 143 | 143 | 162 | 162 |
| H, mm | 135 | 137 | 135 | 136 | 136 | 170 | 170 |
| I, mm | 185 | 188 | 188 | 210 | 210 | 223 | 223 |

Universal grab model TAG

Capacity 350 - 10000 kg

The universal grab TAG saves time, as it does not require chains, cables etc. when hoisting and loading material. The large jaw capacity allows to tackle a variety of sizes with only one clamp. It can be used for loading machine tools, lifting steel constructions, welding and assembly jobs as well as for concrete and prefabricated pieces.

Features

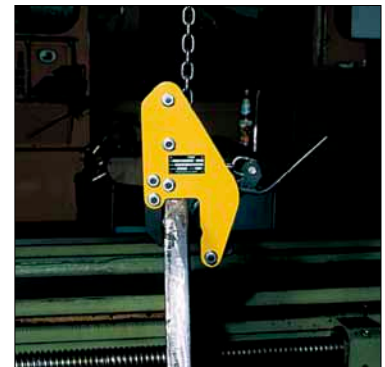
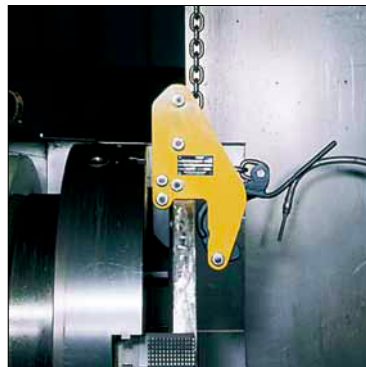
- The automatic clamping force is retained by a positive tension spring, even if there is slack in the chain.
- The "Quick-Open" type universal grab opens by lifting and simultaneously pulling the lever out against the tension spring. The jaw is closed by the spring.
- Universal grabs up to 2.0 t capacity are equipped with round chains, clamps with increased capacities are delivered with roller chains.

Options

- Grabs up to 1.25t WLL are available with a protective lining on the clamping jaws on request. This results in a decrease of the jaw capacity by 10 mm.



! The surface hardness of the material must not exceed HRC 30/Brinell 300.



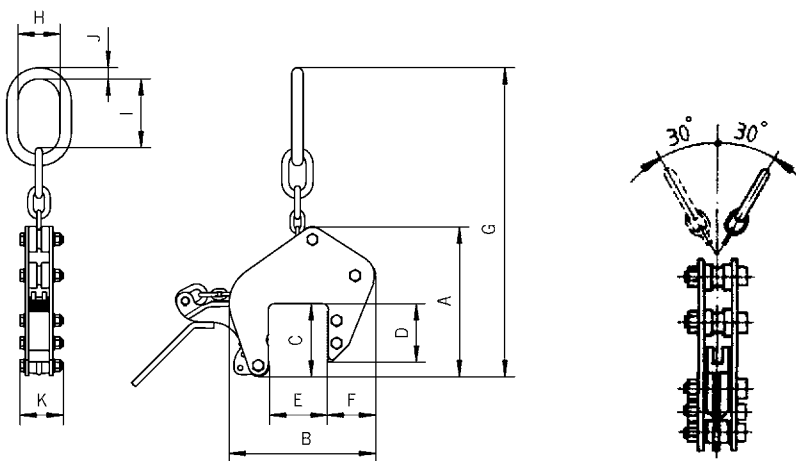
Special version of universal grab model TAG with modified side plates for use in confined spaces.

Technical data model TAG

| Model | EAN-No. 4025092* | Capacity kg | Jaw width mm | Jaw capacity mm | Weight kg |
|--------------|---------------------|----------------|-----------------|--------------------|--------------|
| TAG 0,35/100 | *550413 | 350 | 100 | 0 - 100 | 8.7 |
| TAG 0,35/200 | *551724 | 350 | 200 | 90 - 200 | 16.3 |
| TAG 0,75/100 | *550253 | 750 | 100 | 0 - 100 | 8.6 |
| TAG 0,75/200 | *552806 | 750 | 200 | 90 - 200 | 16.6 |
| TAG 1,25/100 | *550468 | 1250 | 100 | 0 - 100 | 14.9 |
| TAG 1,25/200 | *551502 | 1250 | 200 | 90 - 200 | 24.3 |
| TAG 2,0/100 | *550642 | 2000 | 100 | 0 - 100 | 20.8 |
| TAG 2,0/200 | *551366 | 2000 | 200 | 90 - 200 | 29.1 |
| TAG 3,0/90 | *550840 | 3000 | 90 | 5 - 90 | 26.5 |
| TAG 5,0/90 | *550345 | 5000 | 90 | 5 - 90 | 30.5 |
| TAG 5,0/170 | *551915 | 5000 | 170 | 80 - 170 | 43.8 |
| TAG 10,0/100 | *552059 | 10000 | 100 | 0 - 100 | 70.0 |
| TAG 10,0/200 | *553001 | 10000 | 200 | 100 - 200 | 105.0 |

Dimensions model TAG

| Model | TAG 0,35/100 | TAG 0,35/200 | TAG 0,75/100 | TAG 0,75/200 | TAG 1,25/100 | TAG 1,25/200 | TAG 2,0/100 | TAG 2,0/200 | TAG 3,0/90 | TAG 5,0/90 | TAG 5,0/170 | TAG 10,0/100 | TAG 10,0/200 |
|-------|-----------------|-----------------|-----------------|-----------------|-----------------|-----------------|----------------|----------------|---------------|---------------|----------------|-----------------|-----------------|
| A, mm | 264 | 382 | 264 | 382 | 320 | 382 | 328 | 375 | 297 | 297 | 354 | 405 | 440 |
| B, mm | 259 | 434 | 259 | 434 | 289 | 434 | 415 | 515 | 290 | 290 | 423 | 423 | 562 |
| C, mm | 128 | 195 | 128 | 195 | 128 | 195 | 135 | 195 | 136 | 136 | 180 | 160 | 200 |
| D, mm | 100 | 156 | 100 | 156 | 100 | 156 | 115 | 165 | 106 | 106 | 155 | 130 | 175 |
| E, mm | 100 | 200 | 100 | 200 | 100 | 200 | 100 | 200 | 90 | 90 | 170 | 100 | 200 |
| F, mm | 85 | 120 | 85 | 120 | 85 | 120 | 105 | 160 | 91 | 91 | 118 | 160 | 183 |
| G, mm | 550 | 760 | 550 | 760 | 570 | 760 | 571 | 750 | 570 | 570 | 620 | 720 | 840 |
| H, mm | 75 | 75 | 75 | 75 | 75 | 75 | 75 | 75 | 82 | 82 | 82 | 102 | 102 |
| I, mm | 121 | 121 | 121 | 121 | 121 | 121 | 121 | 121 | 111 | 111 | 111 | 144 | 144 |
| J, mm | 20 | 20 | 20 | 20 | 20 | 20 | 20 | 20 | 32 | 32 | 32 | 40 | 40 |
| K, mm | 78 | 90 | 83 | 90 | 83 | 90 | 105 | 105 | 137 | 147 | 147 | 208 | 208 |



Only for model TAG up to 2.0 t

! The min. load is 10% of the nominal WLL!



Non-marring grab model TBP

Capacity 500 - 1500 kg

The TBP non-marring grab is suitable for lifting, turning and transporting of plates with a sensitive surface without leaving behind indentations.

It can be used for aluminium and stainless steel plate or those with an extremely hard surface.

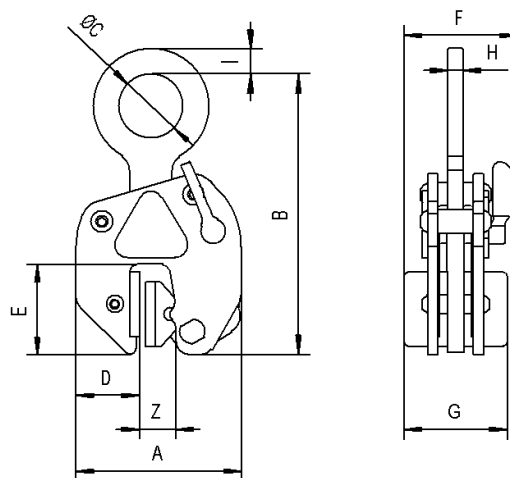
! The surface of the plate must be free of oil, grease or any other liquid to ensure safe transport.

Technical data model TBP

| Model | EAN-No. 4025092* | Capacity kg | Jaw capacity Z mm | Weight kg |
|---------|---------------------|----------------|----------------------|--------------|
| TBP 0,5 | *556378 | 500 | 0 - 10 | 3.0 |
| TBP 1,5 | *556392 | 1500 | 0 - 20 | 12.6 |

Dimensions model TBP

| Model | TBP 0,5 | TBP 1,5 |
|---------|---------|---------|
| A, mm | 127 | 215 |
| B, mm | 200 | 345 |
| D, mm | 52 | 75 |
| E, mm | 69 | 135 |
| F, mm | 87 | 131 |
| G, mm | 76 | 118 |
| H, mm | 13 | 20 |
| I, mm | 20 | 24 |
| Ø C, mm | 55 | 85 |



! The min. load is 10% of the nominal WLL!

Non-marring grab with chain model TSB

Capacity 350 - 1250 kg

The TSB grab has parallel-facing jaws that equally distribute the clamping pressure over a relatively large surface area. This makes the grab attractive for plate material with sensitive surfaces. The protective lining "Bremsit" offers an outstanding friction coefficient, thereby enhancing the grip of the jaws. This lining can be easily replaced when worn.

Similar to the universal grab, this grab has a large jaw capacity and the security of a safety lock device with a hold-open/hold-closed feature.

The surface of the plate must be free of oil, grease or any other liquid to ensure safe transport.

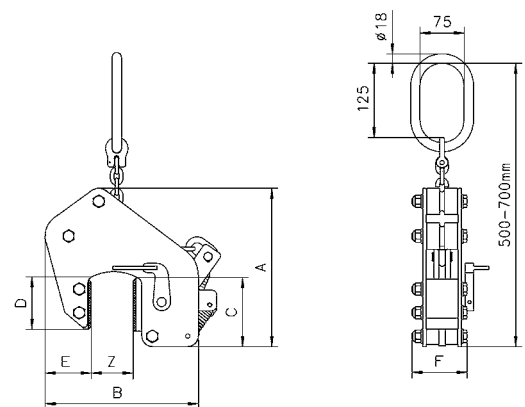


Technical data model TSB

| Model | EAN-No. 4025092* | Capacity kg | Jaw capacity Z mm | Weight kg |
|-------------|---------------------|----------------|----------------------|--------------|
| TSB 0,35/65 | *550772 | 350 | 0 - 65 | 11.6 |
| TSB 0,75/65 | *550826 | 750 | 0 - 65 | 11.8 |
| TSB 1,25/65 | *550727 | 1250 | 0 - 65 | 16.7 |

Dimensions model TSB

| Model | TSB 0,35/65 | TSB 0,75/65 | TSB 1,25/65 |
|-------|-------------|-------------|-------------|
| A, mm | 270 | 270 | 270 |
| B, mm | 260 | 260 | 260 |
| C, mm | 128 | 128 | 128 |
| D, mm | 100 | 100 | 100 |
| E, mm | 65 | 65 | 65 |
| F, mm | 78 | 78 | 78 |



The min. load is 10% of the nominal WLL!



Girder grab for horizontal transport model TTG

Capacity 500 - 7500 kg

The girder grab TTG is designed for the horizontal transport of girders, metal plates, profiles etc. The offset suspension lug ensures that the flange of the girder will be kept practically horizontal during transport.

The positive safety lock keeps the clamp safely locked, even before the lift begins. This allows the operator to place the clamp, lock it closed and move away from the load. The lever ensures easy opening and closing of the clamping jaw and has a "lock open" feature.



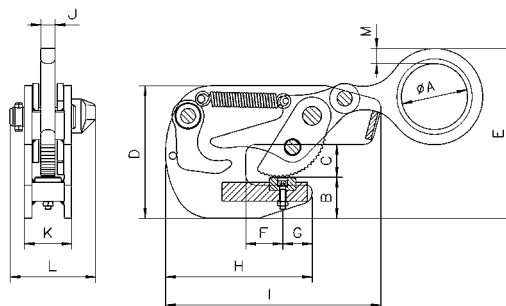
When transporting long girders, it is recommended to use a pair of clamps in conjunction with a spreader beam.

Technical data model TTG

| Model | EAN-No. 4025092* | Capacity kg | Jaw capacity mm | Weight kg |
|---------|---------------------|----------------|--------------------|--------------|
| TTG 0,5 | *557931 | 500 | 0 - 20 | 2.9 |
| TTG 1,5 | *550239 | 1500 | 0 - 30 | 6.8 |
| TTG 3,0 | *550192 | 3000 | 0 - 35 | 11.3 |
| TTG 4,5 | *550451 | 4500 | 0 - 40 | 14.8 |
| TTG 7,5 | *551205 | 7500 | 0 - 45 | 30.0 |

Dimensions model TTG

| Model | TTG 0,5 | TTG 1,5 | TTG 3,0 | TTG 4,5 | TTG 7,5 |
|---------|---------|---------|---------|---------|---------|
| Ø A, mm | 50 | 70 | 80 | 90 | 110 |
| B, mm | 36 | 43 | 55 | 60 | 64 |
| C, mm | 25 | 35 | 42 | 46 | 55 |
| D, mm | 148 | 140 | 180 | 196 | 222 |
| E, mm | 200 | 180 | 214 | 248 | 304 |
| F, mm | 27 | 40 | 40 | 40 | 50 |
| G, mm | 20 | 30 | 32 | 35 | 42 |
| H, mm | 95 | 155 | 190 | 207 | 237 |
| I, mm | 110 | 230 | 284 | 314 | 367 |
| J, mm | 10 | 15 | 20 | 20 | 22 |
| K, mm | 56 | 50 | 60 | 64 | 90 |
| L, mm | 85 | 100 | 114 | 117 | 143 |
| M, mm | 13 | 16 | 20 | 25 | 30 |



Girder grab for vertical transport model TTR

Capacity 750 - 3000 kg

The girder grab TTR is designed for vertical transport, especially for lifting and stacking of girders. The unique position of the offset suspension lug keeps the girder virtually in a vertical position during transport.

The positive safety lock keeps the clamp safely locked, even before the lift begins. This allows the operator to place the clamp, lock it closed and move away from the load. The lever ensures easy opening and closing of the clamping jaw and has a "lock open" feature.



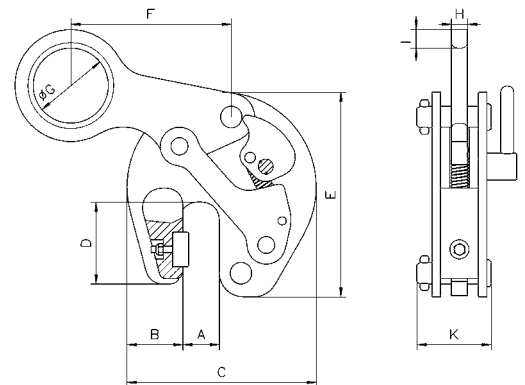
When transporting long girders, it is recommended to use a pair of clamps in conjunction with a spreader beam.

Technical data model TTR

| Model | EAN-No. 4025092* | Capacity kg | Jaw capacity mm | Weight kg |
|----------|---------------------|----------------|--------------------|--------------|
| TTR 0,75 | *550499 | 750 | 5 - 16 | 3.1 |
| TTR 1,50 | *550246 | 1500 | 5 - 25 | 6.8 |
| TTR 3,00 | *550550 | 3000 | 5 - 28 | 10.9 |

Dimensions model TTR

| Model | TTR 0,75 | TTR 1,50 | TTR 3,00 |
|---------|----------|----------|----------|
| A, mm | 24 | 33 | 37 |
| B, mm | 40 | 53 | 56 |
| C, mm | 132 | 176 | 194 |
| D, mm | 62 | 76 | 78 |
| E, mm | 145 | 190 | 208 |
| F, mm | 118 | 152 | 163 |
| Ø G, mm | 50 | 70 | 80 |
| H, mm | 12 | 15 | 20 |
| I, mm | 12 | 17 | 23 |
| K, mm | 53 | 69 | 85 |





Girder grab for horizontal transport model TTT

Capacity 750 - 4500 kg

The girder grab TTT is used for the horizontal transport of steel girders. Due to the split fixed jaw, it can be positioned centrally on the end of the beam. The grab should only be used in pairs.

The safety lock with positive spring tension holds the grab in position on the end of the girder even without load tension.

The lever is used to engage and disengage the jaw and to keep it open.

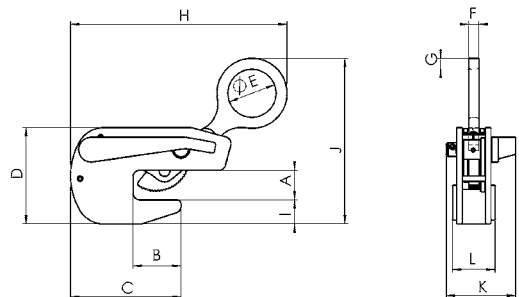
The angle from the vertical must not exceed 30°!

Technical data model TTT

| Model | EAN-No. 4025092* | Capacity kg | Jaw capacity mm | Weight kg |
|----------|---------------------|----------------|--------------------|--------------|
| TTT 0,75 | *558501 | 750 | 0 - 20 | 3 |
| TTT 1,5 | *558518 | 1500 | 0 - 35 | 6 |
| TTT 3,0 | *558525 | 3000 | 0 - 40 | 10 |
| TTT 4,5 | *558532 | 4500 | 0 - 45 | 16 |

Dimensions model TTT

| Model | TTT 0,75 | TTT 1,5 | TTT 3,0 | TTT 4,5 |
|---------|----------|---------|---------|---------|
| A, mm | 30 | 38 | 50 | 60 |
| B, mm | 70 | 70 | 75 | 90 |
| C, mm | 100 | 155 | 195 | 222 |
| D, mm | 142 | 150 | 195 | 222 |
| Ø E, mm | 50 | 70 | 80 | 90 |
| F, mm | 16 | 19 | 19 | 22 |
| G, mm | 16 | 20 | 25 | 30 |
| H, mm | 225 | 335 | 400 | 450 |
| I, mm | 45 | 45 | 80 | 90 |
| J, mm | 200 | 210 | 214 | 248 |
| K, mm | 106 | 120 | 125 | 147 |
| L, mm | 52 | 66 | 80 | 88 |



Horizontal lifting gear model TCH

Capacity 1000 - 10000 kg

The TCH horizontal lifting gear consists of two clamps with a two-legged chain sling. It is especially suited for the transport of single plates with a minimum thickness of approx. 5 mm as well as for plate bundles.

The two-legged version is appropriate for normal sized plates. For extra large or long plates, it is recommended to use two sets of the two-legged lifting gears in conjunction with a spreader beam.

In the standard version, the lifting clamp is suitable for plates up to 1500mm width. Lifting gears with longer chains for larger plate widths are available on request. The capacity applies to a pair of lifting clamps. Single clamps are also available.



The angle from the vertical must not exceed 45°!

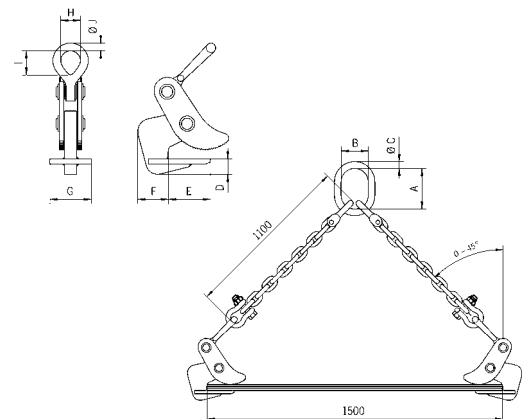
Technical data model TCH

| Model | EAN-No. 4025092* for lifting gear two-legged | EAN-No. 4025092* single clamp | Capacity* kg | Jaw capacity mm | Weight** kg |
|------------|--|-------------------------------|-----------------|--------------------|----------------|
| TCH 1,0 | *551625 | *558778 | 1000 | 0 - 50 | 13.0 |
| TCH 2,0 | *551991 | *551168 | 2000 | 5 - 32 | 17.7 |
| TCH 4,0 | *551755 | *550895 | 4000 | 5 - 50 | 31.0 |
| TCH 6,0 | *553230 | *550888 | 6000 | 5 - 75 | 69.0 |
| TCH 8,0 | *553247 | *552097 | 8000 | 5 - 75 | 72.0 |
| TCH 10,0/1 | *553254 | *551465 | 10000 | 5 - 100 | 93.8 |
| TCH 10,0/2 | *552042 | *552738 | 10000 | 50 - 150 | 108.6 |

*Per pair, up to an angle of 45° from the vertical
**Weight for two single clamps with chain

Dimensions model TCH

| Model | TCH 1,0 | TCH 2,0 | TCH 4,0 | TCH 6,0 | TCH 8,0 | TCH 10,0/1 | TCH 10,0/2 |
|---------|---------|---------|---------|---------|---------|------------|------------|
| A, mm | 135 | 160 | 180 | 200 | 260 | 300 | 300 |
| B, mm | 75 | 90 | 100 | 110 | 140 | 160 | 160 |
| Ø C, mm | 18 | 22 | 26 | 32 | 36 | 40 | 40 |
| D, mm | 15 | 32 | 44 | 58 | 56 | 70 | 66 |
| E, mm | 82 | 83 | 114 | 172 | 170 | 216 | 218 |
| F, mm | 65 | 61 | 75 | 97 | 100 | 116 | 116 |
| G, mm | 100 | 100 | 99 | 129 | 128 | 149 | 150 |
| H, mm | 32 | 49 | 62 | 90 | 90 | 113 | 113 |
| I, mm | 44 | 72 | 89 | 127 | 130 | 113 | 113 |
| Ø J, mm | 13 | 19 | 26 | 36 | 37 | 50 | 50 |





Horizontal lifting gear model TGF

Capacity 350 - 6650 kg

The TGF horizontal lifting gear consists of two clamps with a two-legged chain sling and is especially suited for the transport of plate bundles.

The clamps are easily adjusted to the height of the plate by a special ratcheting lever.

The lifting clamps are available in special versions for bundle thicknesses up to 400 mm.

Scope of delivery for horizontal lifting gear

2 clamps and two-legged chain sling for plate width 1500 mm.

Capacity ratings are valid for a complete two-legged chain system.
Also available as single clamp (without shackle).

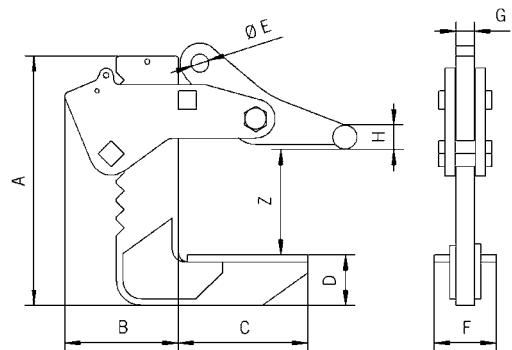
Technical data model TGF

| Model | EAN-No. 4025092* for lifting gear two-legged | EAN-No. 4025092* single clamp | Capacity* kg | Jaw capacity Z mm | Weight** kg |
|-------------|--|-------------------------------|--------------|-------------------|-------------|
| TGF 0,3/150 | *553087 | *553216 | 350 | 0 - 150 | 21 |
| TGF 0,6/150 | *553094 | *553223 | 650 | 0 - 150 | 22 |
| TGF 1,3/150 | *552745 | *552554 | 1300 | 0 - 150 | 23 |
| TGF 2,3/150 | *551731 | *551809 | 2300 | 0 - 150 | 33 |
| TGF 3,3/150 | *551342 | *550833 | 3300 | 0 - 150 | 39 |
| TGF 5,0/150 | *553100 | *553322 | 5000 | 0 - 150 | 59 |
| TGF 6,6/150 | *553117 | *551885 | 6650 | 0 - 150 | 65 |
| TGF 0,3/250 | *552882 | *553339 | 350 | 0 - 250 | 21 |
| TGF 0,6/250 | *553124 | *552387 | 650 | 0 - 250 | 22 |
| TGF 1,3/250 | *552608 | *553346 | 1300 | 0 - 250 | 23 |
| TGF 2,3/250 | *552363 | *552622 | 2300 | 0 - 250 | 33 |
| TGF 3,3/250 | *553131 | *551540 | 3300 | 0 - 250 | 39 |
| TGF 5,0/250 | *552189 | *553353 | 5000 | 0 - 250 | 59 |
| TGF 6,6/250 | *553148 | *551656 | 6650 | 0 - 250 | 87 |

*Complete two-legged lifting gear, angle from the vertical max. 45°

**Complete two-legged lifting gear

The angle from the vertical must not exceed 45°!



Dimensions model TGF

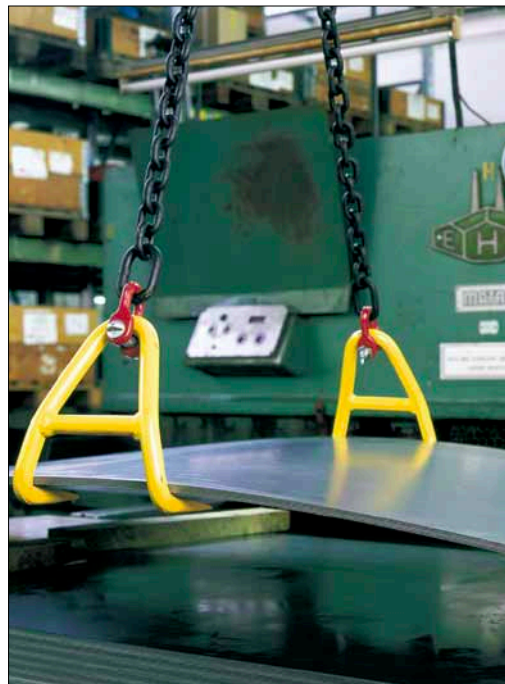
| Model | TGF 0,3/150 | TGF 0,6/150 | TGF 1,3/150 | TGF 2,3/150 | TGF 3,3/150 | TGF 5,0/150 | TGF 6,6/150 | TGF 0,3/250 | TGF 0,6/250 | TGF 1,3/250 | TGF 2,3/250 | TGF 3,3/250 | TGF 5,0/250 | TGF 6,6/250 |
|---------|-------------|-------------|-------------|-------------|-------------|-------------|-------------|-------------|-------------|-------------|-------------|-------------|-------------|-------------|
| A, mm | 298 | 298 | 298 | 321 | 321 | 405 | 405 | 448 | 448 | 448 | 417 | 417 | 495 | 495 |
| B, mm | 122 | 122 | 122 | 130 | 130 | 185 | 185 | 122 | 122 | 122 | 130 | 130 | 185 | 185 |
| C, mm | 160 | 160 | 160 | 160 | 160 | 210 | 210 | 140 | 140 | 140 | 160 | 160 | 210 | 210 |
| D, mm | 41 | 41 | 41 | 50 | 50 | 82 | 82 | 41 | 41 | 41 | 60 | 60 | 82 | 82 |
| Ø E, mm | 20 | 20 | 20 | 23 | 23 | 30 | 30 | 20 | 20 | 20 | 23 | 23 | 30 | 30 |
| F, mm | 80 | 80 | 80 | 80 | 80 | 100 | 100 | 80 | 80 | 80 | 80 | 80 | 100 | 100 |
| G, mm | 20 | 20 | 20 | 25 | 25 | 30 | 30 | 20 | 20 | 20 | 25 | 25 | 30 | 30 |
| Ø H, mm | 25 | 25 | 25 | 25 | 25 | 40 | 40 | 25 | 25 | 25 | 25 | 25 | 40 | 40 |

Horizontal lifting hook model BVH

Capacity 500 - 7500 kg

The BVH horizontal lifting hooks are used in pairs with chain or wire rope slings to lift plate bundles that are relatively close to the ground.

The high tensile hooks have a serrated lifting surface.

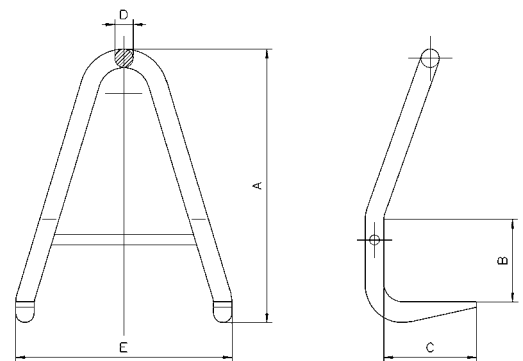


- ! The angle from the vertical must be 30-45°.
- The chain has to be in line with the crank of the lifting hooks.

Technical data model BVH

| Model | EAN-No. 4025092* | Capacity* kg | Weight kg |
|----------|---------------------|-----------------|--------------|
| BVH 0,5 | *557023 | 500 | 1.2 |
| BVH 1,12 | *557047 | 1120 | 1.4 |
| BVH 1,5 | *557061 | 1500 | 2.4 |
| BVH 2,0 | *557085 | 2000 | 3.9 |
| BVH 2,5 | *557108 | 2500 | 8.2 |
| BVH 3,2 | *557122 | 3200 | 8.3 |
| BVH 4,0 | *557146 | 4000 | 13.6 |
| BVH 5,0 | *557160 | 5000 | 21.0 |
| BVH 6,0 | *557184 | 6000 | 39.0 |
| BVH 7,5 | *557207 | 7500 | 60.0 |

*Pro Stück



Dimensions model BVH

| Model | BVH 0,5 | BVH 1,12 | BVH 1,5 | BVH 2,0 | BVH 2,5 | BVH 3,2 | BVH 4,0 | BVH 5,0 | BVH 6,0 | BVH 7,5 |
|-------|---------|----------|---------|---------|---------|---------|---------|---------|---------|---------|
| A, mm | 180 | 210 | 240 | 280 | 340 | 400 | 530 | 660 | 800 | 980 |
| B, mm | 50 | 60 | 70 | 80 | 100 | 120 | 160 | 200 | 250 | 300 |
| C, mm | 80 | 95 | 105 | 115 | 120 | 140 | 180 | 210 | 250 | 300 |
| D, mm | 18 | 20 | 22 | 26 | 32 | 32 | 36 | 40 | 50 | 60 |
| E, mm | 150 | 170 | 200 | 220 | 270 | 320 | 420 | 520 | 640 | 760 |



Lifting clamp with safety lock model THS

Capacity 750 - 4500 kg

The THS lifting clamp is normally used in pairs especially for the horizontal transport of plates. The transport of slightly sagging plates is also possible. Individually, it can be used to load presses shears, and other machines. The safety lock is preventing the clamp from opening, even when there is no load. The jaws can be opened and closed with the safety lock lever. This clamp has a lock-open feature.

Options

- The models THS 1.5 and THS 3.0 are available with a hinged hook ring on request.



When used in pairs the angle from the vertical must not exceed 30°!



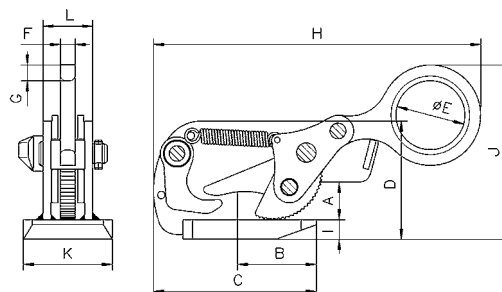
Technical data model THS

| Model | EAN-No. 4025092* | Capacity* kg | Jaw capacity mm | Weight kg |
|----------|---------------------|-----------------|--------------------|--------------|
| THS 0,75 | *551267 | 750 | 0 - 20 | 3.2 |
| THS 1,5 | *550734 | 1500 | 0 - 35 | 6.1 |
| THS 3,0 | *551373 | 3000 | 0 - 40 | 12.7 |
| THS 4,5 | *553483 | 4500 | 0 - 40 | 16.5 |

*Pro Stück

Dimensions model THS

| Model | THS 0,75 | THS 1,5 | THS 3,0 | THS 4,5 |
|---------|----------|---------|---------|---------|
| A, mm | 30 | 38 | 45 | 47 |
| B, mm | 70 | 80 | 95 | 110 |
| C, mm | 130 | 165 | 205 | 235 |
| D, mm | 97 | 120 | 160 | 196 |
| Ø E, mm | 50 | 70 | 80 | 90 |
| F, mm | 12 | 15 | 20 | 20 |
| G, mm | 15 | 17 | 25 | 30 |
| H, mm | 255 | 335 | 400 | 450 |
| I, mm | 15 | 20 | 30 | 59 |
| J, mm | 135 | 165 | 195 | 230 |
| K, mm | 80 | 90 | 100 | 110 |
| L, mm | 40 | 50 | 60 | 64 |



Lifting clamp model TWH

Capacity 1500 - 5000 kg

The TWH lifting clamp, when used in pairs, is well-suited for horizontal transport of individual and bundled plates.

The clamp is not suited for thin plates that have a tendency to sag during transport.

It is normally used in combination with a two-legged chain sling.

The capacity (WLL) applies to a pair of lifting clamps.

Options

- Protective lining



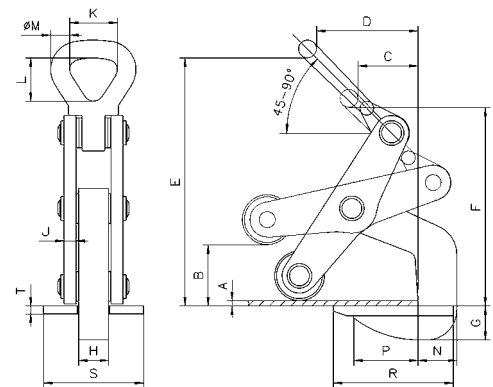
The angle from the vertical must not exceed 45°.

Technical data model TWH

| Model | EAN-No. 4025092* | Capacity* kg | Jaw capacity mm | Weight** kg |
|----------------------|---------------------|-----------------|--------------------|----------------|
| TWH 30 with rollers | *550529 | 1500 | 5 - 60 | 5.6 |
| TWH 50 with rollers | *551441 | 2500 | 10 - 70 | 10.3 |
| TWH 70 with rollers | *551380 | 3500 | 10 - 80 | 13.4 |
| TWH 100 with rollers | *551618 | 5000 | 10 - 102 | 27.7 |
| TWH 30 with plate | *555654 | 1500 | 5 - 60 | 5.7 |
| TWH 50 with plate | *555661 | 2500 | 10 - 70 | 10.3 |
| TWH 70 with plate | *555678 | 3500 | 10 - 80 | 13.5 |
| TWH 100 with plate | *555685 | 5000 | 10 - 102 | 27.8 |

*Per pair, angle from the vertical max. 45°

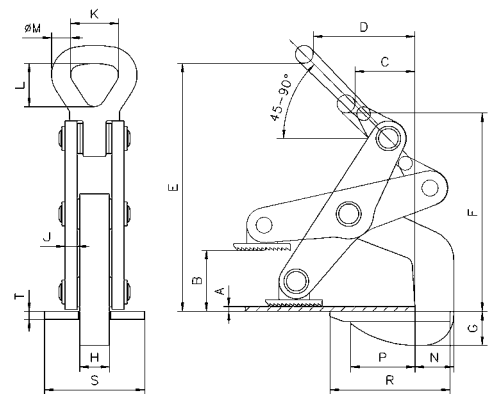
**Per unit



Model TWH with rollers

Dimensions model TWH

| Model | TWH 30 with rollers | TWH 50 with rollers | TWH 70 with rollers | TWH 100 with rollers | TWH 30 with plate | TWH 50 with plate | TWH 70 with plate | TWH 100 with plate |
|---------|---------------------------|---------------------------|---------------------------|----------------------------|-------------------------|-------------------------|-------------------------|--------------------------|
| A, mm | 5 | 10 | 10 | 10 | 5 | 10 | 10 | 10 |
| B, mm | 60 | 70 | 80 | 102 | 60 | 70 | 80 | 102 |
| C, mm | 60 | 75 | 90 | 110 | 60 | 75 | 90 | 110 |
| D, mm | 105 | 130 | 162 | 170 | 105 | 130 | 162 | 170 |
| E, mm | 250 | 315 | 345 | 425 | 250 | 315 | 345 | 425 |
| F, mm | 200 | 275 | 292 | 345 | 200 | 275 | 292 | 345 |
| G, mm | 31 | 45 | 55 | 57 | 22 | 38 | 48 | 45 |
| H, mm | 30 | 30 | 30 | 45 | 30 | 30 | 30 | 45 |
| J, mm | 12 | 12 | 15 | 20 | 12 | 12 | 15 | 20 |
| K, mm | 50 | 64 | 64 | 89 | 50 | 64 | 64 | 89 |
| L, mm | 73 | 92 | 92 | 130 | 73 | 92 | 92 | 130 |
| Ø M, mm | 18 | 25 | 25 | 35 | 18 | 25 | 25 | 35 |
| N, mm | 36 | 58 | 65 | 80 | 36 | 58 | 65 | 80 |
| P, mm | 65 | 77 | 105 | 120 | 65 | 77 | 105 | 120 |
| R, mm | 120 | 150 | 185 | 210 | 120 | 150 | 185 | 210 |
| S, mm | 100 | 100 | 100 | 120 | 100 | 100 | 100 | 120 |
| T, mm | 10 | 10 | 10 | 12 | 10 | 10 | 10 | 12 |



Model TWH with plate



Lifting clamp model THK

Capacity 750 - 9000 kg

The THK lifting clamp, when used in pairs, is especially well-suited for horizontal transport of thin plates that have a tendency to sag.

It is normally used in combination with a two-legged chain sling.

The capacity applies to a pair of lifting clamps.



! The angle from the vertical must not exceed 30°!

Technical data model THK

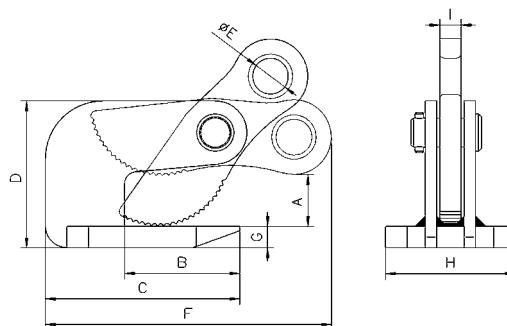
| Model | EAN-No. 4025092* | Capacity* kg | Jaw capacity mm | Weight** kg |
|----------|---------------------|-----------------|--------------------|----------------|
| THK 0,75 | *550628 | 750 | 0 - 25 | 1.7 |
| THK 1,5 | *550284 | 1500 | 0 - 35 | 3.2 |
| THK 3,0 | *550390 | 3000 | 0 - 35 | 5.7 |
| THK 4,5 | *551120 | 4500 | 0 - 45 | 8.4 |
| THK 6,0 | *551038 | 6000 | 0 - 60 | 11.6 |
| THK 9,0 | *551960 | 9000 | 0 - 60 | 17.9 |

*Per pair, angle up to 30° from the vertical

**Per unit

Dimensions model THK

| Model | THK 0,75 | THK 1,5 | THK 3,0 | THK 4,5 | THK 6,0 | THK 9,0 |
|---------|----------|---------|---------|---------|---------|---------|
| A, mm | 25 | 36 | 38 | 48 | 63 | 65 |
| B, mm | 72 | 80 | 93 | 103 | 124 | 113 |
| C, mm | 118 | 135 | 168 | 183 | 214 | 223 |
| D, mm | 81 | 102 | 119 | 140 | 176 | 188 |
| Ø E, mm | 20 | 25 | 30 | 30 | 35 | 40 |
| F, mm | 161 | 198 | 227 | 238 | 284 | 317 |
| G, mm | 12 | 15 | 20 | 25 | 30 | 35 |
| H, mm | 86 | 102 | 110 | 122 | 110 | 148 |
| I, mm | 12 | 15 | 20 | 20 | 20 | 20 |



Board clamp model TPZ

Capacity 400 - 750 kg

The TPZ clamp is made for lifting and vertically transporting wood, particle board and plastic sheets.

The pliers are fastened to the plate with the aid of a hand-held lever. The jaw, which has a protective lining, grabs once lifting begins and holds the board securely.

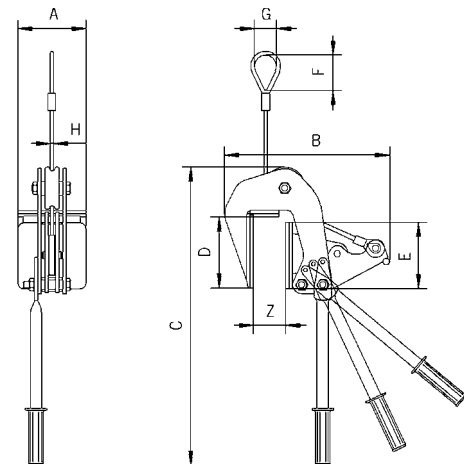


Technical data model TPZ

| Model | EAN-No. 4025092* | Capacity kg | Jaw capacity Z mm | Weight kg |
|--------------|---------------------|----------------|----------------------|--------------|
| TPZ 0,4/55 | *555234 | 400 | 5 - 55 | 6.3 |
| TPZ 0,4/100 | *558983 | 400 | 55 - 100 | 9.0 |
| TPZ 0,75/60 | *558990 | 750 | 5 - 60 | 12.0 |
| TPZ 0,75/120 | *559003 | 750 | 60 - 120 | 14.0 |

Dimensions model TPZ

| Model | TPZ 0,4/55 | TPZ 0,4/100 | TPZ 0,75/60 | TPZ 0,75/120 |
|-------|------------|-------------|-------------|--------------|
| A, mm | 120 | 120 | 155 | 155 |
| B, mm | 290 | 335 | 349 | 406 |
| C, mm | 525 | 525 | 545 | 560 |
| D, mm | 125 | 125 | 145 | 145 |
| E, mm | 117 | 117 | 135 | 135 |
| F, mm | 60 | 60 | 121 | 121 |
| G, mm | 40 | 40 | 75 | 75 |
| H, mm | 6 | 6 | 8x24 | 8x24 |



Model TPZ, up to 400 kg equipped with rope, from 750 kg equipped with chain.



Manual claw, magnetic model THM

Capacity 120 - 170 kg

The THM manual magnetic claw is used for transporting steel sheets horizontally and vertically, lifting plates from racks, pulling steel sheets out of shelving, as well as transporting flat pieces of magnetizable steel.

The clamp, depending on the type, can be used for plate thicknesses from 1 to 5 mm.

Pressing down on the handle activates a cam which releases the magnetic claw from the workpiece.

This manual claw is maintenance-free and keeps the magnetic force for an unlimited period of time.

In order to achieve a maximum capacity, the contact surface should be bright and free from dirt, oil, grease, scale, corrosion, paint etc.

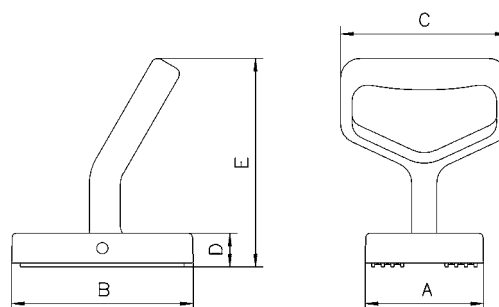
Technical data model THM

| Model | EAN-No. 4025092* | Capacity* kg | Pulling capacity* kg | Weight kg |
|---------|---------------------|-----------------|-------------------------|--------------|
| THM 120 | *550963 | 120 | 70 | 2 |
| THM 170 | *550437 | 170 | 100 | 2 |

*Measured at a safety factor 2:1 on bright drawn material St 37 k

Dimensions model THM

| Model | THM 120 | THM 170 |
|-------|---------|---------|
| A, mm | 84 | 116 |
| B, mm | 140 | 140 |
| C, mm | 130 | 130 |
| D, mm | 25 | 25 |
| E, mm | 172 | 172 |



Hand clamp model THG

Capacity 250 kg

The THG hand clamp is suited for the individual transport of light and thin plates. Pressing down on the hand grip releases the tension spring, allowing the clamp to open and slide onto the plate.

The plate can be transported by holding onto the ergonomically designed hand grip.

The positive spring pressure prevents the plate from accidental slipping out of the clamp.



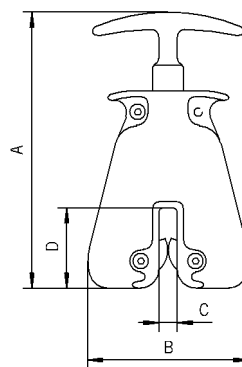
! The plate surface of the material must not exceed a hardness of HRC 30.

Technical data model THG

| Model | EAN-No. 4025092* | Capacity kg | Jaw capacity mm | Weight kg |
|-------|---------------------|----------------|--------------------|--------------|
| THG | *556057 | 250 | 0 - 10 | 1.4 |

Dimensions model THG

| Model | THG |
|---------------|-----|
| A, mm | 184 |
| B, mm | 105 |
| C, mm | 12 |
| D, mm | 53 |
| Thickness, mm | 40 |



Attaching



Transport



Screw clamp for vertical and horizontal pulling model TSH

Capacity 750 - 5000 kg

The screw clamp offers many possible applications. It is particularly useful for lifting, turning and pulling steel plates, girders and steel constructions.

The spindle is closed only finger tight.

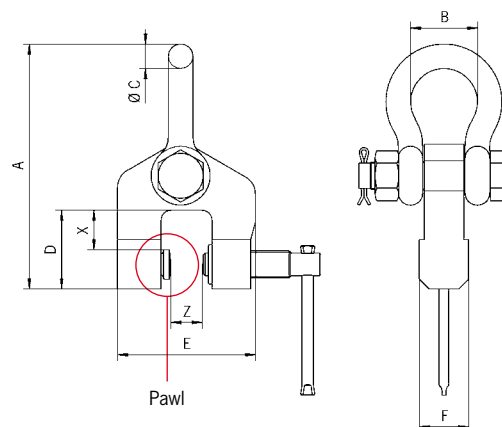
Once the screw clamp is tightened and lifting begins, the pivoting pad clamping system produces a wedging action against the material, holding it securely.

Technical data model TSH

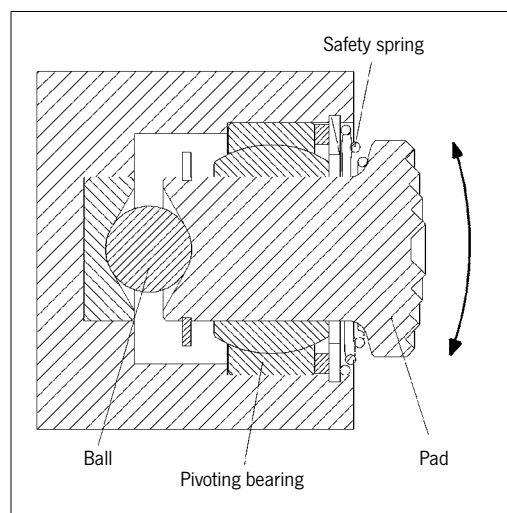
| Model | EAN-No. 4025092* | Capacity kg | Jaw capacity Z mm | Weight kg |
|-----------|---------------------|----------------|----------------------|--------------|
| TSH 0,75 | *559027 | 750 | 0 - 28 | 3.1 |
| TSH 1,5 | *550123 | 1500 | 0 - 32 | 7.4 |
| TSH 2,0 | *120302 | 2000 | 90 - 140 | 14.8 |
| TSH 2,0 S | *426756 | 2000 | 50 - 100 | 14.5 |
| TSH 3,0 | *550154 | 3000 | 0 - 50 | 11.4 |
| TSH 5,0 | *550215 | 5000 | 0 - 80 | 27.6 |

Dimensions model TSH

| Model | TSH 0,75 | TSH 1,5 | TSH 2,0 | TSH 2,0 S | TSH 3,0 | TSH 5,0 |
|---------|----------|---------|---------|-----------|---------|---------|
| A, mm | 190 | 255 | 318 | 318 | 290 | 470 |
| B, mm | 52 | 65 | 74 | 74 | 74 | 130 |
| Ø C, mm | 19 | 26 | 30 | 30 | 30 | 50 |
| D, mm | 43 | 75 | 90 | 90 | 85 | 135 |
| E, mm | 113 | 130 | 286 | 246 | 170 | 225 |
| F, mm | 35 | 44 | 60 | 60 | 50 | 72 |
| X, mm | 15 | 40 | 38 | 38 | 40 | 50 |



The plate surface of the material must not exceed a hardness level of HRC 50.



Functional drawing pivoting pad

Screw clamp for lifting and pulling model TSD

Capacity 1500 - 7500 kg

The TSD screw clamp is a valuable asset when lifting, pulling and fitting sheet material as well as steel constructions.

The spindle is closed only finger tight.

When the screw clamp is tightened and lifting begins, the pivoting pad clamping system produces a wedging action against the material, holding it securely.

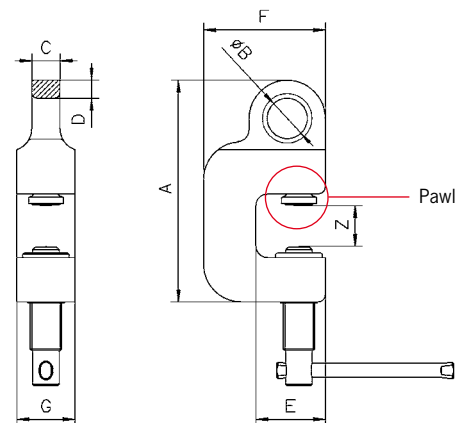


Technical data model TSD

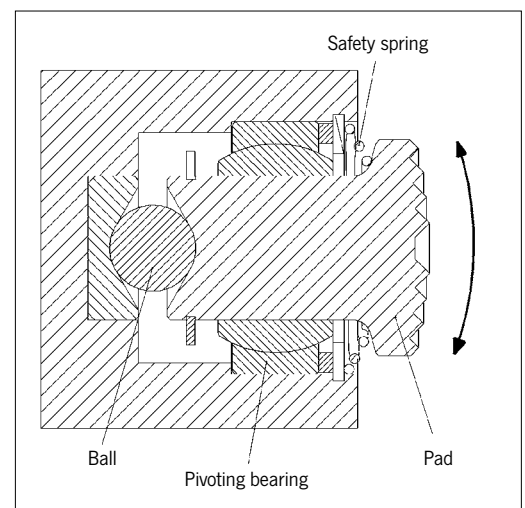
| Model | EAN-No. 4025092* | Capacity kg | Jaw capacity Z mm | Weight kg |
|---------|---------------------|----------------|----------------------|--------------|
| TSD 1,5 | *550598 | 1500 | 0 - 35 | 4.8 |
| TSD 3,0 | *550864 | 3000 | 0 - 35 | 8.1 |
| TSD 5,0 | *551717 | 5000 | 0 - 40 | 14.5 |
| TSD 7,5 | *550987 | 7500 | 0 - 40 | 18.1 |

Dimensions model TSD

| Model | TSD 1,5 | TSD 3,0 | TSD 5,0 | TSD 7,5 |
|---------|---------|---------|---------|---------|
| A, mm | 191 | 235 | 275 | 295 |
| Ø B, mm | 35 | 46 | 55 | 65 |
| C, mm | 24 | 34 | 40 | 50 |
| D, mm | 16 | 17 | 18 | 22 |
| E, mm | 60 | 67 | 85 | 92 |
| F, mm | 105 | 120 | 150 | 162 |
| G, mm | 50 | 60 | 75 | 80 |



! The plate surface of the material must not exceed a hardness level of HRC 50.



Functional drawing pivoting pad



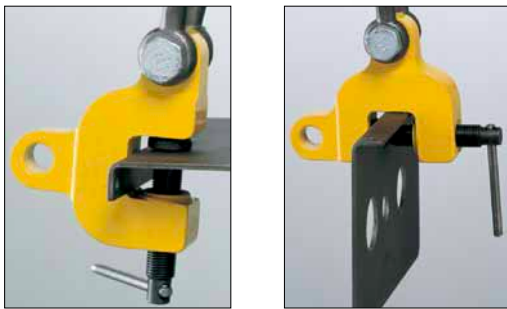
Screw clamp for three-dimensional pulling model TSZ

Capacity 500 - 7500 kg

The TSZ screw clamp is designed to pull in three directions. It offers many different possibilities for transporting steel constructions, feeding machining centres, etc.

The spindle is closed only finger tight.

When the screw clamp is tightened and lifting begins, the pivoting pad clamping system produces a wedging action against the material, holding it securely.



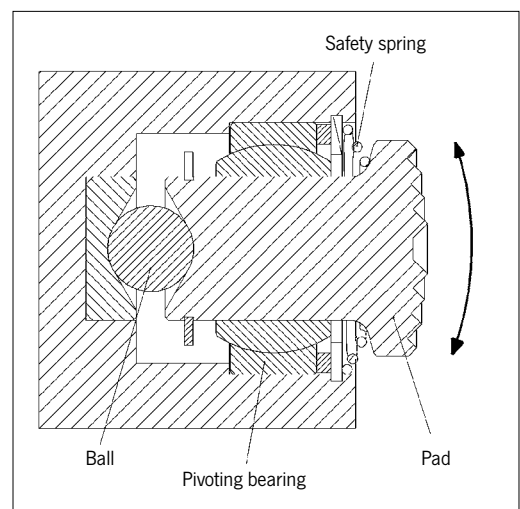
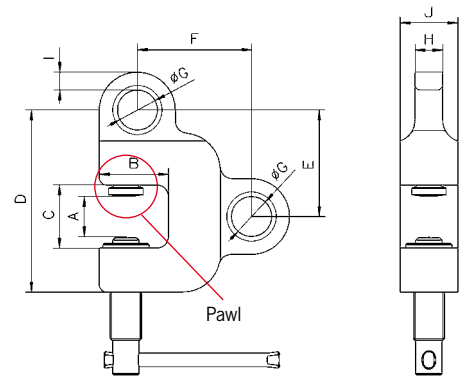
The plate surface of the material must not exceed a hardness level of HRC 50.

Technical data model TSZ

| Model | EAN-No. 4025092* | Capacity kg | Jaw capacity mm | Weight kg |
|---------|---------------------|----------------|--------------------|--------------|
| TSZ 0,5 | *555739 | 500 | 0 - 28 | 2.3 |
| TSZ 1,5 | *555746 | 1500 | 0 - 35 | 5.6 |
| TSZ 3,0 | *555753 | 3000 | 0 - 35 | 8.8 |
| TSZ 5,0 | *555760 | 5000 | 0 - 40 | 16.2 |
| TSZ 7,5 | *555777 | 7500 | 0 - 40 | 20.9 |

Dimensions model TSZ

| Model | TSZ 0,5 | TSZ 1,5 | TSZ 3,0 | TSZ 5,0 | TSZ 7,5 |
|---------|---------|---------|---------|---------|---------|
| A, mm | 28 | 35 | 35 | 40 | 40 |
| B, mm | 43 | 60 | 67 | 85 | 92 |
| C, mm | 45 | 55 | 65 | 75 | 75 |
| D, mm | 125 | 158 | 195 | 230 | 240 |
| E, mm | 72 | 93 | 114 | 133 | 143 |
| F, mm | 83 | 99 | 120 | 150 | 162 |
| Ø G, mm | 26 | 35 | 46 | 55 | 65 |
| H, mm | 16 | 24 | 34 | 40 | 50 |
| I, mm | 12 | 16 | 17 | 18 | 23 |
| J, mm | 35 | 50 | 60 | 75 | 80 |



Functional drawing pivoting pad