

RISe (Rehabilitation in Society) Foundation's Residential Home - Malta

Introduction



RISe Foundation's Residential Home (from now on "RISe Foundation's home") is managed by RISe Foundation and plays a vital role in fulfilling the foundation's mission and vision by offering a community-based rehabilitation and reintegration program with aftercare service. RISe Foundation is dedicated to creating a supportive environment for its service users to reflect on their life situations and make informed decisions about their future. The foundation is also dedicated to providing rehabilitation services, guidance and supervision to help individuals on their journey to full integration into the community. The facility is located in Valletta, Malta's capital city, and is an integral part of the neighbourhood. RISe Foundation's home was established in 2016 and operates under a formal agreement between the Ministry of Family, Children's Rights and Social Solidarity and RISe Foundation, allowing the foundation to manage it. Parts of the services are also supported by the Ministry for Home Affairs, National Security, Reform and Equality. Apart from the program provided, the Foundation also contributes towards research, advocacy and innovation in policy implications through talks, conferences and educating the general public.

Scale

RISe Foundation's home is a small-scale facility accommodating ten people.

RESCALED-principles in practice:

- Small-scale
- Differentiated
- Community-integrated

Differentiation

Target group:

RISe Foundation's home is specially designed for adult males who are in the final year of their prison sentence, whether it is the last twelve months or so before release or parole. The average length of stay is about one year, sometimes longer and sometimes less, in line with the final stages of their sentence. This program serves as an important stepping stone for people as they prepare for reintegration into society. People with various criminal histories have the opportunity to enter the program including those with drug related crimes,

violent crimes, white collar crimes and/or property crimes. People convicted with sexual related crimes are thoroughly assessed due to the nature of the crime and not always eligible for the program.

The placement process is thorough, involving an assessment by an advisory committee to determine eligibility for the program. In cases where placement may be necessary, a final decision may require discussions among the Chief Executive Officer of the Government Agency, the prison director, and the Director of the RISE Foundation. This ensures a comprehensive consideration of each resident's unique needs and circumstances.

Forms of security:



The security at the RISE Foundation's home is primarily based on relational security complemented by static and procedural security measures.

Relational security is based on mutual trust, respect and positive relationships to create a safe and rehabilitative environment for residents. This approach empowers individuals to take responsibility for their actions and decisions while providing the support necessary for their successful reintegration into the community. Staff maintain close relationships with residents, often sharing meals and socializing together. Correctional officers are only present during the night shift and they are without a uniform and unarmed. The team taking care of the rest of the shifts are therapeutic support workers who are graduates in the field of either psychology or criminology and the program coordinator. The Care Plan Team consists of professionals including psychologists/psychotherapists, social workers, criminologists, employment officer, and the education team. They liaise closely with the therapeutic support workers to ensure continuity of care. This form of security is considered to be informal and based on the motivation of the individual because at this stage there is a lot at stake.

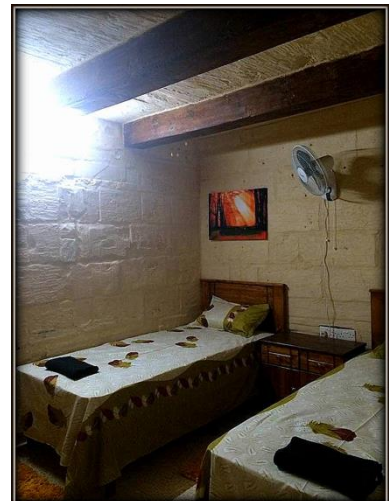
Although there are some measures of static security present, it is not very visible. The facility looks like a normal house with no bars on the windows or alarms. However, there are cameras installed in the common areas and on the stairs leading to the door. The door is locked towards the outside, but any resident can leave the house at any time by simply pressing a button to unlock it. Thus there are no physical barriers preventing residents from leaving the house. However, they only go out when authorized and with permission. Security also includes camera surveillance and periodic urine / drug tests to ensure compliance.

As for procedural security, residents can leave the facility daily to go to work and meet their families on weekends, but for other outings, they must ask permission. Staff are always present during the day, but at night there is only one ununiformed and unarmed guard to ensure safety.

Activities:

Residents at the RISE Foundation's home follow a structured daily routine aimed at promoting personal responsibility and growth as they prepare for successful reintegration into society. Their typical day begins with breakfast, followed by different activities based on which phase of the program one is at. Those who are at the initial phase of the program attend group and individual sessions aimed at reducing the risk of reoffending and meeting their individual needs. While those who are at a more advanced phase of the program are involved in external employment which is mandatory, and where they earn a wage for their work. After returning in the afternoon, residents engage in house-related tasks, such as cleaning, organizing, or cooking, depending on the week's schedule. They also have appointments with the staff and professionals, including social workers and psychologists, for the support they require. The day ends with a communal dinner, which strengthens the bond between residents and staff. Afterwards, residents watch the daily news together and have some free time before going to bed.

The facility prioritizes autonomy and control over the schedules, allowing residents to make their own choices, as long as they fulfill their work and house-related tasks. Beyond the daily activities, residents have the freedom to engage in a range of outside activities, such as meeting their families, attending appointments, or participating in reintegration-related programs. Residents are encouraged to maintain connections with their social network, visiting their families every week. These visits take place outside the facility, either in public spaces or in family homes. This approach ensures a holistic and community-based approach to reintegration.



The main goal of these activities is to enable program participants to change their behavioural patterns, perspectives and attitudes. This change is aimed at helping them become productive members of society while refraining from involvement in criminal activities.

Community-integration

Location and architecture:

Located in the heart of Valletta, Malta's capital city, the facility functions as an integral part of the community. Despite being the capital of Malta, Valletta is still a small town with a population of approximately 5157 inhabitants (2021).¹ Situated in the city center, the facility is on a regular street surrounded by similar-

¹Valletta (Locality, Malta) - population statistics, charts, map and location. (2023). *City Population*. Retrieved October 16th, 2023, from, https://www.citypopulation.de/en/malta/admin/southern_harbour/01101__valletta/



looking houses. It is surrounded by markets, restaurants, tourist destinations, and close to public transportation, ensuring accessibility.

RISe Foundation's home offers a communal living space where residents share bedrooms, bathrooms, a living room, and a kitchen. There are no private rooms; instead, all rooms are shared, emphasizing community and support among residents. The house

is designed to provide a homely atmosphere. Each room features different, welcoming wall colours, such as blue, purple, and pink. Wooden furniture adds a cosy touch, and the entire space is well-organized. Positive paintings and messages adorn the walls, creating an uplifting environment. The house also includes a rooftop overlooking the sea, with chairs and a table.

First impression of a visitor: "The first impression was very positive and impressive, because it was a very simple house located in the heart of the city. From the outside, it looks exactly like a residential house that could belong to any person or family. There is nothing indicating that it was a detention facility".

Interaction with the community:

Although RISe Foundation's home does not provide structural services to the community or the community does not provide structural services to the organization, its location and the way it is managed still ensure integration into the wider community. However, the residents do engage in community work not only in the city that the residence is at but also in other parts of the country. Residents are allowed to freely move within the community and can use various services in the community, such as supermarkets, doctors, gyms, theater etc. In other words, residents of the facility can use the same services in the community as other people in the community who are not staying in the facility.

RISe Foundation's residential home

Founded: 2016

Capacity: 10

Security level: Low

Nearest city/town: Valletta (Malta)

Nature of interaction: Visited by RESHAPE (14/12/2022)

Publicity/ read more

- About RISE FOUNDATION at the official website of the organisation itself:

Offenders | RISe Foundation | Il-belt Valletta. (n.d.). *RISE Foundation*. Retrieved October 16th, 2023, from <https://www.RISemalta.org.mt/>