

# Pis d'Acollida - Spain

## Introduction

Penitentiary Pastoral Association, also known as APP, is a non-profit association that runs a transition house, named Pis d'Acollida, located on the outskirts of Palma, a city in Mallorca. Pis d'Acollida is described as a comprehensive support and counseling service for former people in detention in the process of social-employment integration. In addition to the transition house, APP offers non-residential support to people who have been released from prison and are in a situation of social exclusion. Furthermore, they run a project to support people in detention during their leave from prison.



APP was founded in 2004 as a direct result of reflections among several members of Catholic Prison Ministries. They saw a compelling need to create an entity capable of overseeing social projects that extended beyond the religious mission. The primary goal was to provide assistance to people deprived of their freedom and to fully integrate professional services with social engagement. APP's main mission is to humanize life in prison and to assist people returning to society after incarceration, especially those struggling with social exclusion in Mallorca. This includes providing them with essential resources, guidance and opportunities for personal growth.

## Scale

Pis d'Acollida can accommodate twelve people, which makes it a small-scale facility. All twelve individuals are living in one house.

### RESCALED-principles in practice:

- Small-scale
- Differentiated
- Community-integrated

## Differentiation

### *Target group:*

Pis d'Acollida focuses on individuals, both men and women, between the ages of 18 and 60, who face social exclusion and have the potential for job placement. The facility houses people who have finished their

criminal sentence already. Due to program requirements, candidates must have physical autonomy, abstain from toxic drug abuse, and, if experiencing mental health issues, be stabilized.

There are two ways to gain access to the center: Firstly, candidates can voluntarily request access. After this, an immediate knowledge process begins, followed by acceptance or referral to more appropriate services, depending on their needs. Alternatively, access can be initiated through a request from the Technical Team of different Penitentiary Centers. This process includes a collaborative assessment with both the Penitentiary Center team and the authorities of Casa de Reinserción. Both ways are monitored by Community Social Services technicians.

### *Forms of security:*



The core of the house's dynamics depends on voluntary participation. Because it houses people who have served their sentences, it does not employ traditional security measures. Relational security is visible in the facility through building a good relationship with the residents. This is an ongoing process rooted in trust, mutual respect, responsibility and honesty. Although guidelines for behavior, schedules, and tasks exist, these are approached based on understanding and reasoning rather than strict imposition. Residents enjoy unrestricted access to the outside world, fostering their reintegration.

Staff, with residents' consent, have access to their personal and social backgrounds, including criminal and correctional histories, obtained from both the Penitentiary Administration and the Social Services Network. This knowledge helps devise personalized support strategies to best meet individual needs.

### *Activities:*

The operation in Pis d'Acollida is based on three fundamental principles: normalization, responsibility and autonomy for residents. The facility provides basic needs for residents by ensuring their housing, nutrition, hygiene and overall comfort. In addition, emphasis is placed on encouraging the acquisition and development of essential daily living skills. Central to Pis d'Acollida philosophy is the active participation



of residents in the daily functioning of the facility. They are encouraged to assist in the household by helping with meal preparation, cleaning and maintenance, giving them a sense of responsibility and self-reliance. As part of their contribution to the community and their personal growth, residents are also expected to donate 25% of their income to the Pis d'Acollida, reinforcing their involvement and responsibility.

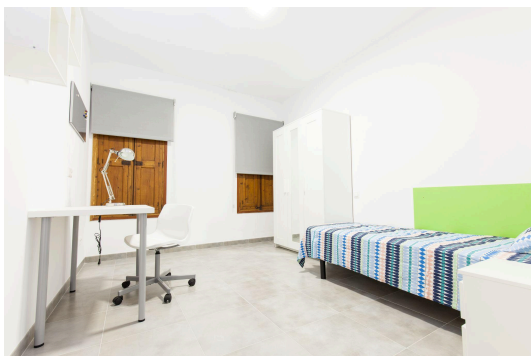
In line with the holistic view of residents, the facility also recognizes that each individual has unique needs and challenges. Therefore, tailored and differentiated support is offered to meet these specific needs. This comprehensive approach encompasses the dimensions of health (psychological and organic, paying special attention to the problem of addictions), training and work needs, family needs and of relationships, leisure and free time. The facility does not work in isolation. Their efforts are complemented by collaboration with other specialized sources to ensure a comprehensive and effective approach to help residents overcome their challenges and successfully reintegrate into society.

## Community-integration

### *Location and architecture:*

Pis d'Acollida is located in Son Sardina, which is a village and settlement of the city of Palma de Mallorca on the island of Mallorca. It is situated within a quiet area and due to the small size of the city, only twenty minutes from the center. Son Sardina has approximately 1 685 inhabitants (2020).<sup>1</sup>

The architecture of Pis d'Acollida is designed to provide residents with a comfortable and supportive environment. Each resident has the privacy of their own room but shares common areas such as a bathroom, common kitchen and living room.



One of the unique aspects of the facility is the presence of a small orchard and garden, where animals roam freely. The combination of private rooms and shared spaces, along with the natural environment, fosters a sense of community, making it an ideal place for people to rebuild their lives.

---

<sup>1</sup>Son Sardina (Palma, Balearic Islands Province, Spain) - Population Statistics, Charts, Map, Location, Weather and Web Information. (2020). City Population. Retrieved November 3rd, 2023, from [https://www.citypopulation.de/en/spain/localities/illesbalears/palma/07040001803\\_\\_son\\_sardina/](https://www.citypopulation.de/en/spain/localities/illesbalears/palma/07040001803__son_sardina/)

### *Interaction with the community:*

Pis d'Acollida is fully integrated into the community. The facility offers some specific services but for other day-to-day services, residents use the ones already present in the community. The facility is actively involved in community services such as health care, transportation and various other essential services. In addition, several spaces in the facility are used for a wide range of recreational and educational activities for neighbourhood residents. These spaces are used consistently and foster a sense of belonging in the neighbourhood. Residents not only regularly participate in these activities, but also enjoy participating in other events or initiatives that take place in the community.

#### **Pis d'Acollida**

Founded: 2004 (APP)

Capacity: 12

Security level: Low

Nearest city/town: San  
Sardina (Mallorca - Spain)

Nature of interaction:

Visited by RJN  
(23/01/2023)

### **Publicity/ read more**

- About APP at the official website of the foundation itself:

Associació Pastoral Penitenciària. (n.d.). *Associació Pastoral Penitenciària: Support and reintegration towards freedom*. Retrieved November 1st, 2023, from <https://paspenitenciaria.org/en/home/>

- About Pis d'Acollida at the official website of the foundation itself:

*Pis d'acollida i reinserció* | Associació Pastoral Penitenciària. (n.d.). Retrieved January 30th, 2024 from <https://paspenitenciaria.org/ca/pis-acollida/>