

1

2

3

4

5

6

A

B

C

D

A

B

C

D

Schematic Revisions:

- 24-07-01 P1.2 - Updated ESP32 symbol
- 24-06-26 P1.1 - Fixed incorrect debug connector.
- 24-05-25 V1.0 - Released without changes
- 24-05-20 P0.3 - Fixed incorrect pin to function mapping.
- 24-05-06 P0.2 - Moved ESP32 SDI from pin 22 to pin 19 to avoid IO8.  
Added pull up to ESP32 IO8 to conform with datasheet for both C3 and C6.
- 24-05-05 P0.1 - First draft schematic

PCB Revisions:

- 24-05-24 V1.0 - Released and sent for mfg.
- 24-05-20 - Implemented schematic P0.3 changes.
- 24-05-06 - Implemented schematic P0.2 changes.
- 24-05-05 - First draft layout

### Drawing: 54-00314-1

Invector Labs AB Östra Ingelstad 1603 27394 Tomelilla Drawn by: >DRAWN_BY Appvd by: >APPVD_BY	Rev: P1.2
	challenger-rp2350-wifi6
	2024-08-08 15:03
	Sheet: 1/4

1

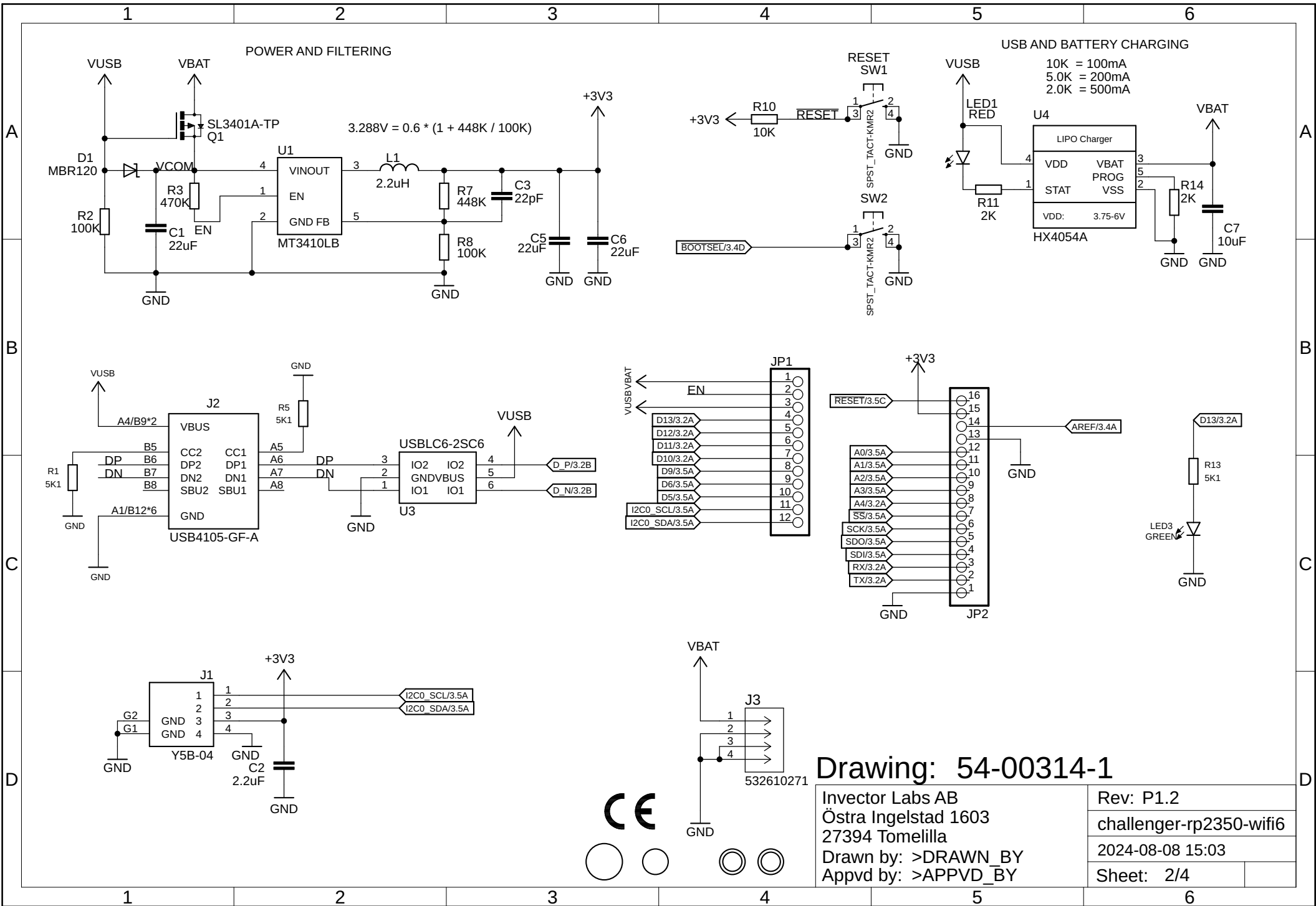
2

3

4

5

6



POWER AND FILTERING

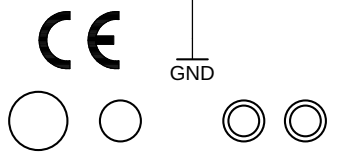
USB AND BATTERY CHARGING

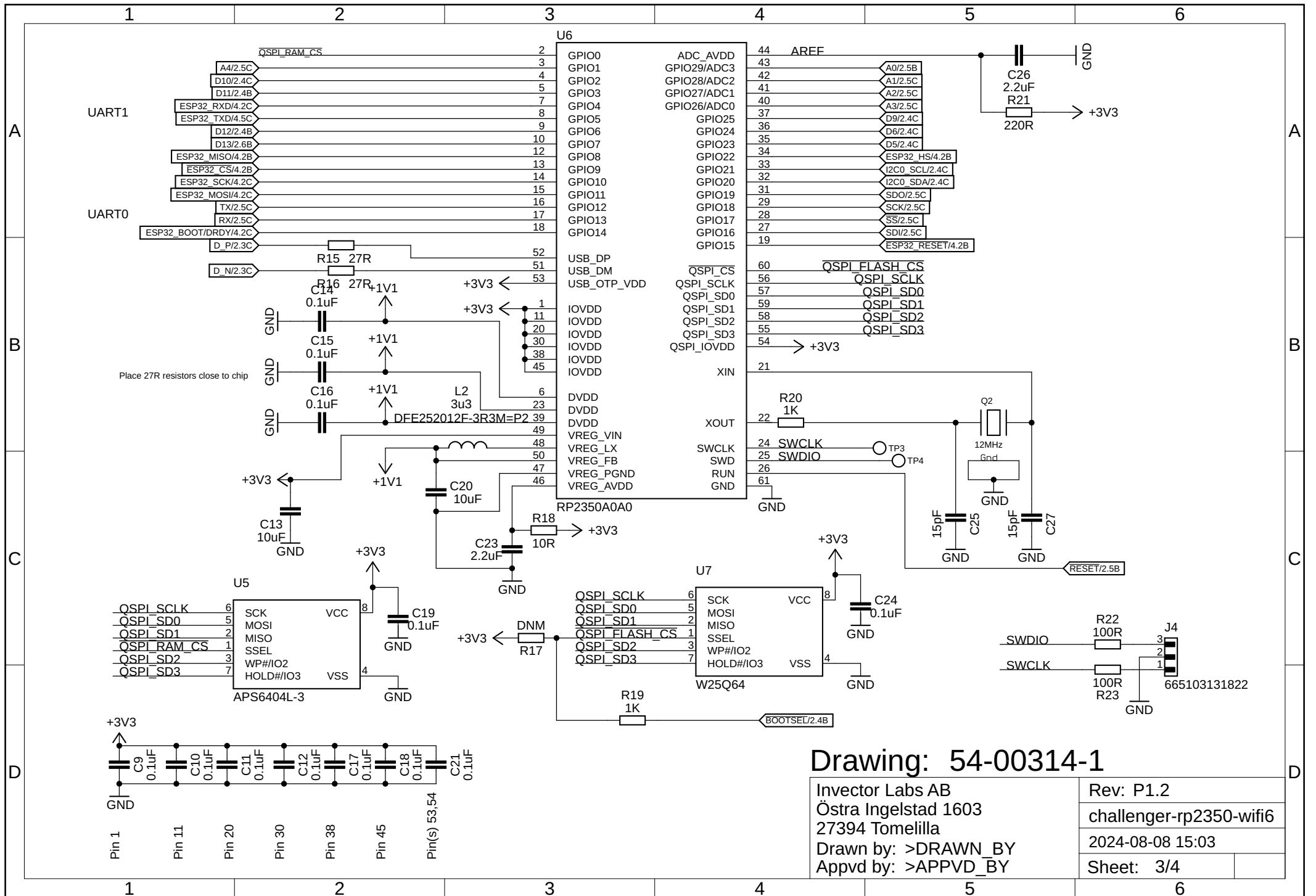
$$3.288V = 0.6 * (1 + 448K / 100K)$$

10K = 100mA  
5.0K = 200mA  
2.0K = 500mA

Drawing: 54-00314-1

Invector Labs AB Östra Ingelstad 1603 27394 Tomelilla Drawn by: >DRAWN_BY Appvd by: >APPVD_BY	Rev: P1.2
	challenger-rp2350-wifi6
	2024-08-08 15:03
	Sheet: 2/4

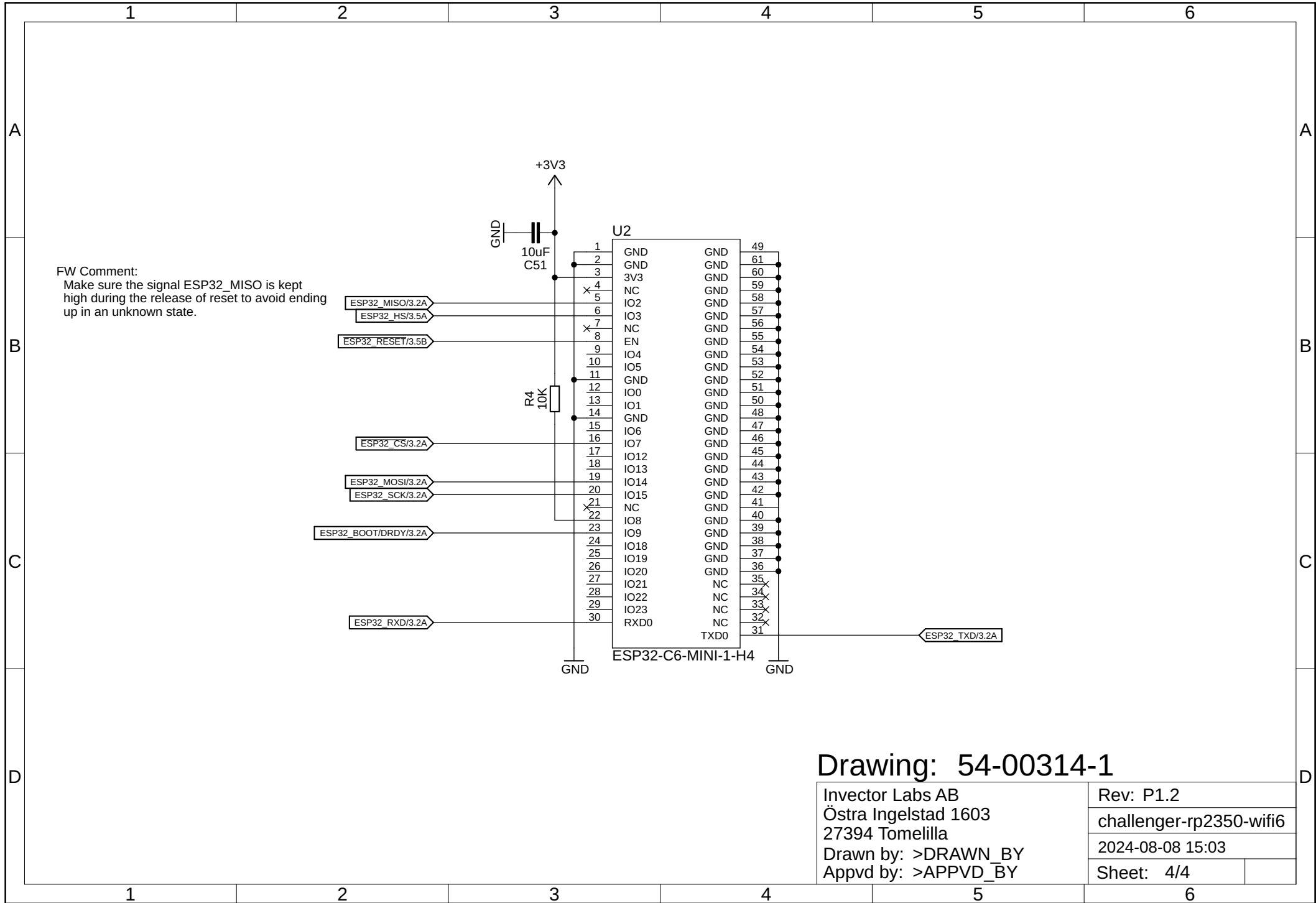




## Drawing: 54-00314-1

Invector Labs AB  
 Östra Ingelstad 1603  
 27394 Tomelilla  
 Drawn by: >DRAWN\_BY  
 Appvd by: >APPVD\_BY

Rev: P1.2  
 challenger-rp2350-wifi6  
 2024-08-08 15:03  
 Sheet: 3/4



FW Comment:  
 Make sure the signal ESP32\_MISO is kept high during the release of reset to avoid ending up in an unknown state.

### Drawing: 54-00314-1

Invector Labs AB Östra Ingelstad 1603 27394 Tomelilla Drawn by: >DRAWN_BY Appvd by: >APPVD_BY	Rev: P1.2
	challenger-rp2350-wifi6
	2024-08-08 15:03
	Sheet: 4/4