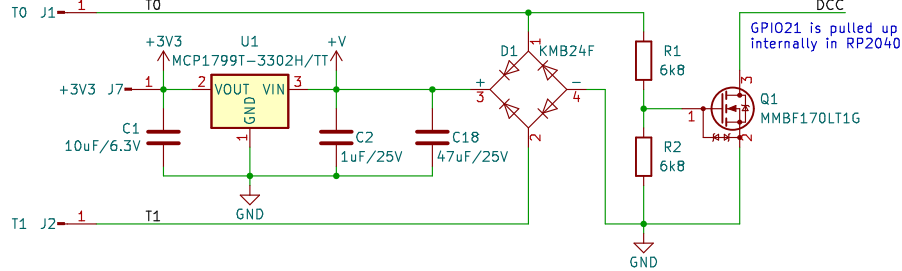
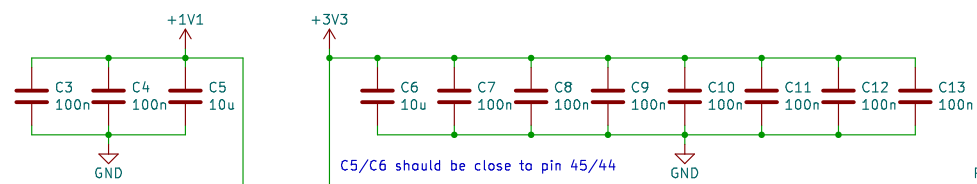
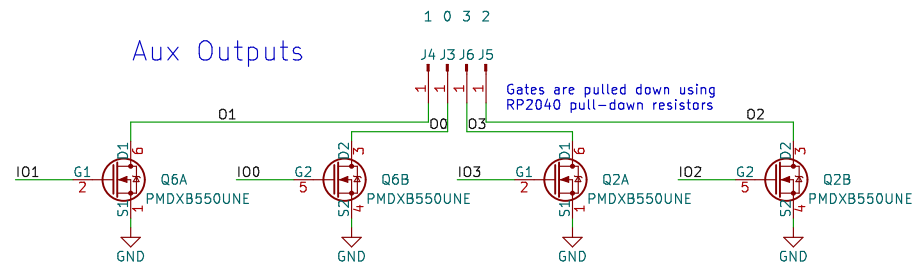


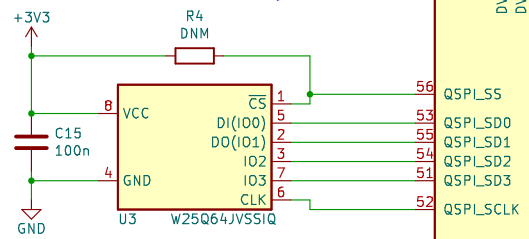
Input Stage



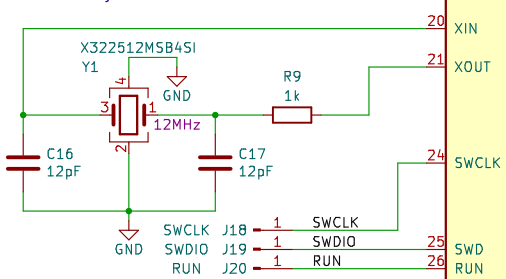
Aux Outputs



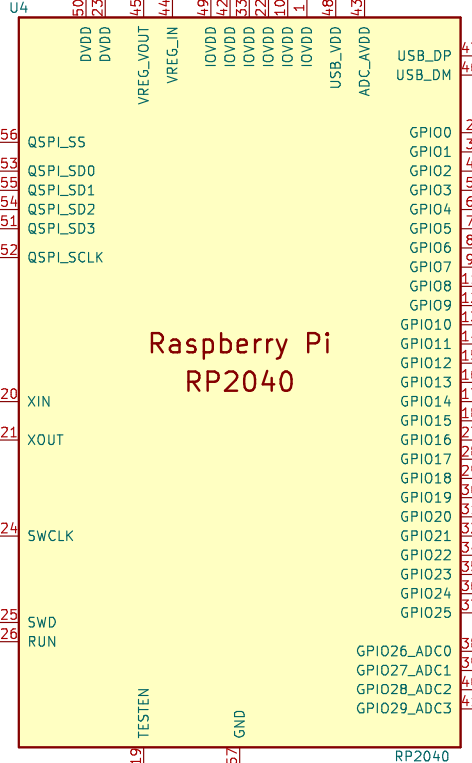
Flash Memory



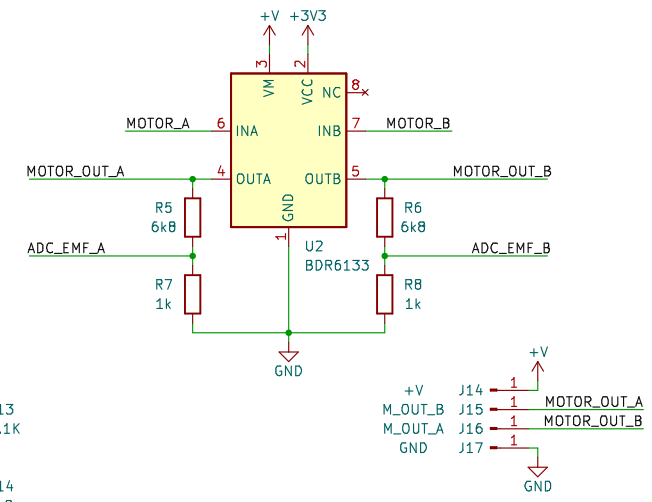
Crystal Oscillator



Raspberry Pi RP2040



Motor Driver



Sheet: /	
File: RP2040-Decoder.kicad_sch	
Title: RP2040-Decoder	
Size: A4	Date: 2022-01-28
KiCad E.D.A. kicad 7.0.10-7.0.10-ubuntu20.04.1	Rev: 1.1
	Id: 1/1