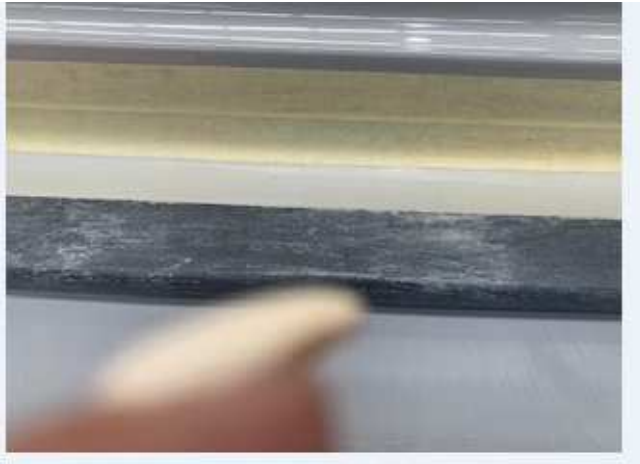


INSTRUCTIONS FOR FITTING A REPLACEMENT TUBE

1. Place the Inflated Tube onto the Hull, ensuring the Tube is centrally located, the Rubbing Strake is level, and the End Cones are equal distance from the transom.
Draw a line in pencil on the Tube where it meets the outer flange of the Hull. This line should be the Centre Line for the Black Tape as per below.
2. Remove Tube from Hull and glue the black tape onto the Tube (middle part and let the second part loose)



3. Replace the Tube onto the Hull and then glue the loose part to the Hull



4. Go to the back (Transom) of the boat and place the 2 smaller tapes one on each side . Leave one for the front (Bow)



5. Place the long tapes all along the tube



6. Complete with the third small tape on the nose

