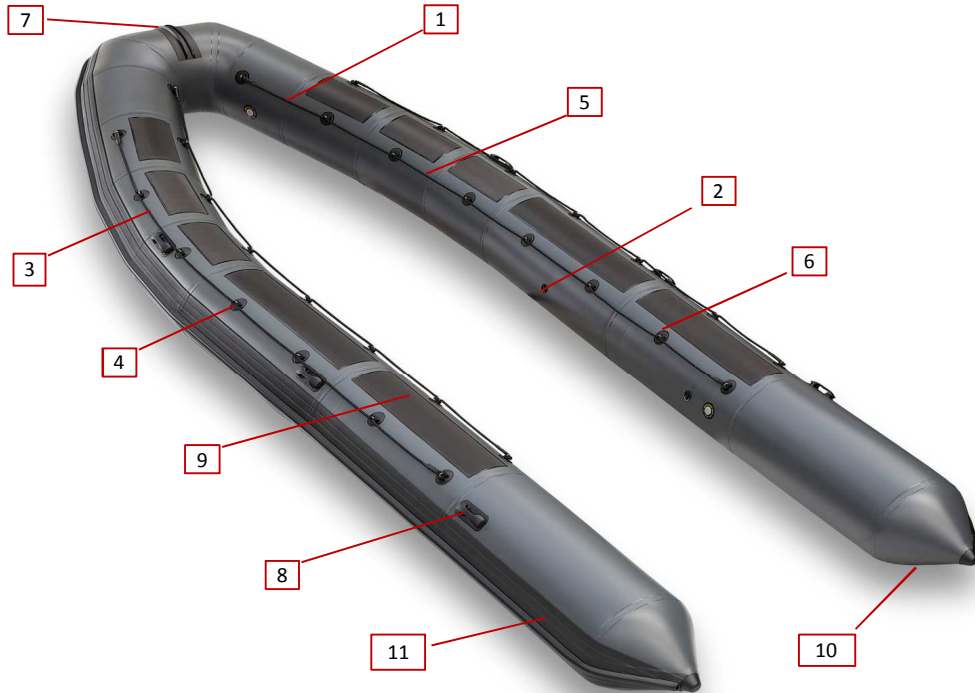


TUBING TECHNICAL DATA

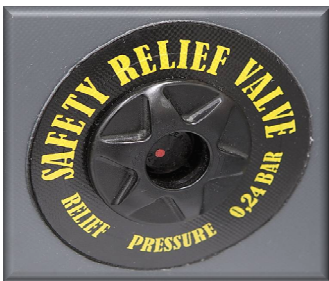
2013-05-21



Nº	RIB COLLAR MODEL	400-445	450-495	500-540	550-575	600-690	700-770	HD-750	HD-850
-	Nº AIR CHAMBERS *	3-4	3-4	4-5	4-5	5	5-7	7	7
-	TUBE DIAMETER cm	46	48	48-52	55	57	60	56	56
1	SAFETY RELIEF VALVE	2	2	2-3	2-3	3	4-5	4	4
2	INFLATION - DEFLATION	3-4	3-4	4-5	4-5	5	5-7	7	7
3	EXTERNAL LIFE LINE Ø 1	2	2	2	2	2	2	2	2
4	EXTERNAL "D" RING	8	8	8	10	10	14	14	16
5	INTERNAL LIFE LINE Ø 1	2	2	2	2	2	2	2	2
6	INTERNAL "D" RING	10	10	12	12	14	16	16	18
7	BOW CLEAT	1	1	1	1	1	1	1	1
8	SIDE HANDLE	4	4	6	6	6	6	6	8
9	TUBE REINFORCEMENT	4	4	6	6	8	10	10	10
10	HF WELDED CONE	2	2	2	2	2	2	2	2
11	RUBBING STRAKE cm	15	15	15	25	36	36	36	36

* manufacturer model

- Tubes manufactured with PU, Hypalon or PVC fabric.
- PU and PVC manufactured with thermowelded seams.



1 - A6 Leaffield Safety Relief Valve



2 - C7 Leaffield inflation/deflation Valve



3-6 Internal & External "D" Ring



7 - Bow Cleat



8 - Side Handle



10 - HF Welded Cone