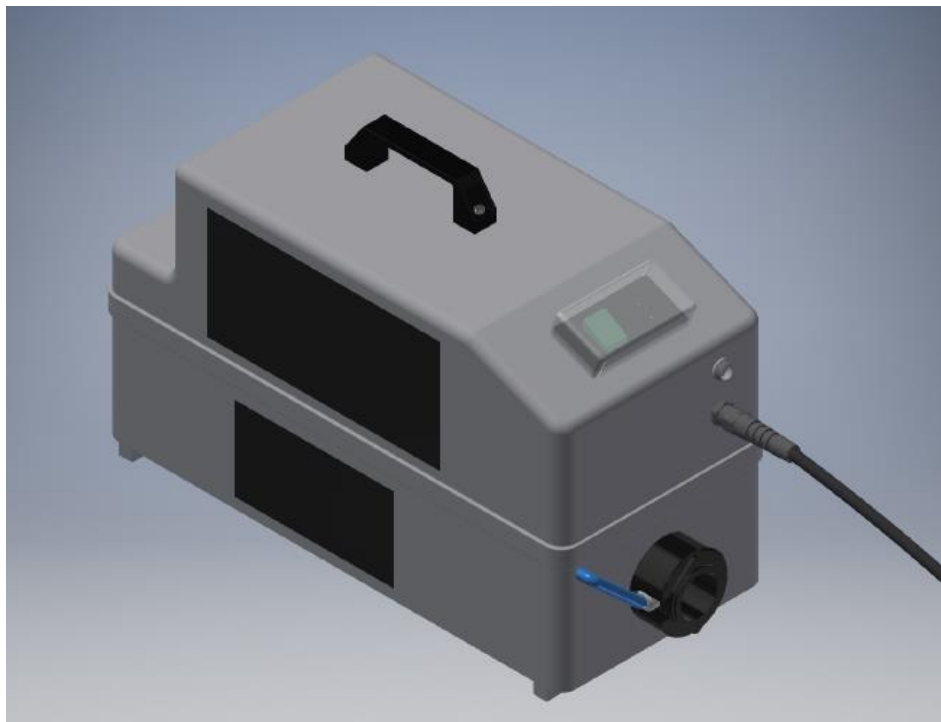




# PRESSURE CONTROL SYSTEM (PCS)

## INSTRUCTION MANUAL



**WARNING: READ THIS MANUAL BEFORE OPERATING THE PRODUCT**

**SAVE THIS INSTRUCTION MANUAL FOR REFERENCE**

**WARNING!** Read all instructions before operating the inflator. Failure to follow all instructions listed below may result in product damage, and/or serious injury.

## SAVE THESE INSTRUCTIONS

### WARNINGS:

1. Read these instructions.
2. Keep these instructions.
3. Protect the cord and the Pressure Sensor Cable from being walked on or pinched.
4. Refer all servicing to qualified service personnel. Servicing is required when the apparatus has been damaged in any way.
5. Don't disassemble the product. Incorrect reassembly may result in a risk of Short Circuit.
6. Keep this product out of the reach of children.

**DO NOT SUPPLY THE INFLATOR AT HIGHER OR LOWER VOLTAGE THAN NOMINAL. STD VOLTAGE IS 230 VAC, 50 Hz or 120 VAC, 60 Hz**

## GENERAL SAFETY RULES

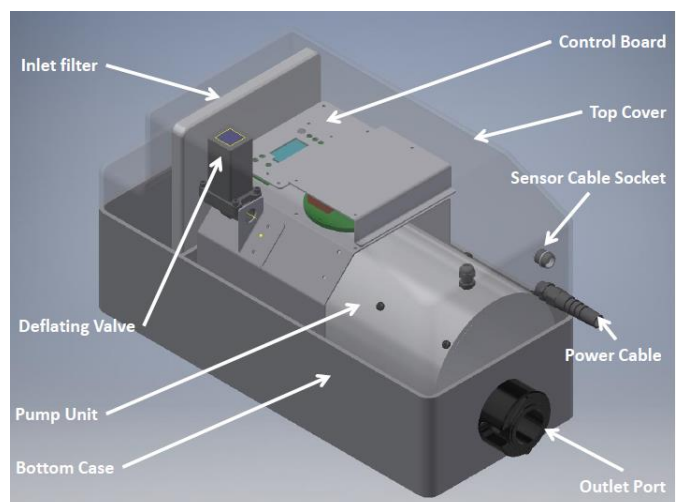
1. **CONSIDER WORK AREA ENVIRONMENT.** Don't expose the device to heavy rain. Don't use in presence of flammable liquids or gases.
2. **DON'T ABUSE CORD.** Never carry device by cord or yank it to disconnect from receptacle. Keep cord from heat, oil, and sharp edges.
3. **STAY ALERT.** Watch what you are doing. Use common sense.
4. **CHECK DAMAGED PARTS.** Before further use of the device, a guard or other part that is damaged should be carefully checked to determine that it will operate properly and perform its intended function.
5. **DO NOT OPERATE** portable device near flammable liquids or in gaseous or explosive atmospheres.
6. **WARNING! RISK OF UNSAFE OPERATION.** Do not modify or attempt to repair. Never drill into or make any modifications to the device or its attachments.

## INTENDED USE

PCS is a system able to keep the nominal pressure inside a large inflatable structures within pre-set values (min. 90 mbar, max. 450 mbar), independently from ambient temperature. The unit constantly monitors the pressure variation inside the inflatable structure and regulates the operation to ensure pressure top-up and pressure relief.

**In case of temporary lack of power, PCS keeps all pre-set values and will re-start as soon as the power is back.**

1. The PCS (Pressure Control System) is a unit able to INFLATE, MAINTAIN A PRESET PRESSURE and DEFLATE a LARGE INFLATABLE STRUCTURE. THAT MEANS THE UNIT MUST BE ALWAYS BE CONNECTED TO THE INFLATABLE. THE UNIT HAS A PROTECTION DEGREE THAT ALLOWS TO INFLATE AND OPERATE EVEN DURING RAINING CONDITIONS OR IN PRESENCE OF DUST.
2. THE PCS IS DELIVERED WITH A FACTORY PRESSURE SET. IF THE SET PRESSURE NEEDS TO BE CHANGED, PLEASE FOLLOW CAREFULLY THE INSTRUCTIONS CONTAINED IN THIS MANUAL. IN CASE OF DOUBTS PLEASE CONTACT SCOPREGA.
3. THE INFLATOR IS PROVIDED WITH HOSES AND ADAPTORS TO BE CONNECTED TO THE MOST COMMON INFLATION VALVES
4. THE INFLATOR IS FITTED WITH THERMAL OVERLOAD SWITCHES THAT WILL INTERVENE IN CASE OF OVERHEATING. NORMAL OPERATION WILL RESUME AUTOMATICALLY AFTER A PAUSE OF 20/40 MINUTES

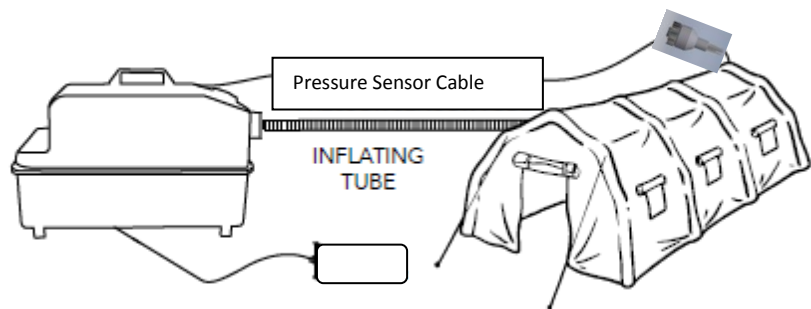


## MAIN CHARACTERISTICS

	PCS 230 Vac	PCS 120 Vac
Supply Voltage	210-240 Vac; 50 Cycles	110-130 Vac; 50 Cycles
Max. Power	2500 W	
Max current consumption	25 A	
Max preset pressure (Inflate and hold)	500 mbar (factory set)	
Min preset pressure (Inflate and hold)	100 mbar (factory set)	
Max Flow rate (zero pressure)	2800 l/min	
Dimensions	L700; W250; H350 (mm)	
Mass	15 Kg	
Protection Degree	IP65 according to IEC standard 60529	
Pressure sensor cable length	10 meters	

## USE OF PCS

1. Connect the Inflating tube to the Outlet Port of the PCS and to the Main Valve of the inflatable structure
2. Connect the Pressure Sensor Cable with the adaptor to the Auxiliary-Inflating valve of the structure



3. Connect the Sensor Cable to the PCS Connector
4. Connect the Power Supply Plug to a specific Socket
5. Turn ON (1) the Green Switch on the Inflator. The light on the switch will turn ON
6. 2 LEDs light up and after 2 seconds the Red LED will turn OFF; the Green LED is signaling that the PCS will start to inflate at the preset pressure.

## CHANGING THE PRESET PRESSURE



TO CHANGE THE PRESET INFLATING/CONTROLLING PRESSURE CONTACT THE SCOPREGA SERVICE CENTER

## TROUBLESHOOTING

Problem	Possible cause	Possible Solution
PCS doesn't start	Power cord not connected	Connect the cable correctly.
	Main GREEN switch OFF (0)	Put the switch to ON. (1)
	The power cord is damaged.	Replace or repair the cable from a SCOPREGA Service Center.
Inflator Stop	Power cord not connected	Connect the cable correctly.
	Main power switch OFF	Put the switch to ON.
	Over-temperature	Wait till the PCS has cooled down. Operation will resume automatically

## DIAGNOSTICS

Meaning of LEDs	Possible cause	Possible Solution
Green LED OFF	Cable of pressure sensor not connect	Connect the cable correctly.
	Pressure sensor cable been disconnected from the valve	Connect the pressure sensor correctly
	The pressure sensor cable is damaged	Replace or repair the cable from a SCOPREGA Service Center

## ACCESSORIES

Recommended accessories for your PCS are available from your dealer.

**⚠ WARNING: USE OF ACCESSORIES NOT RECOMMENDED FOR THIS PRODUCT CAN BE DANGEROUS.**

MADE IN ITALY by



**SCOPREGA**

[www.scoprega.it](http://www.scoprega.it)