





HEYMAN 42' PPH

A yacht with a view

 HEYMAN YACHTS



HEYMAN 42' PPH

A morning breeze, a remote anchorage

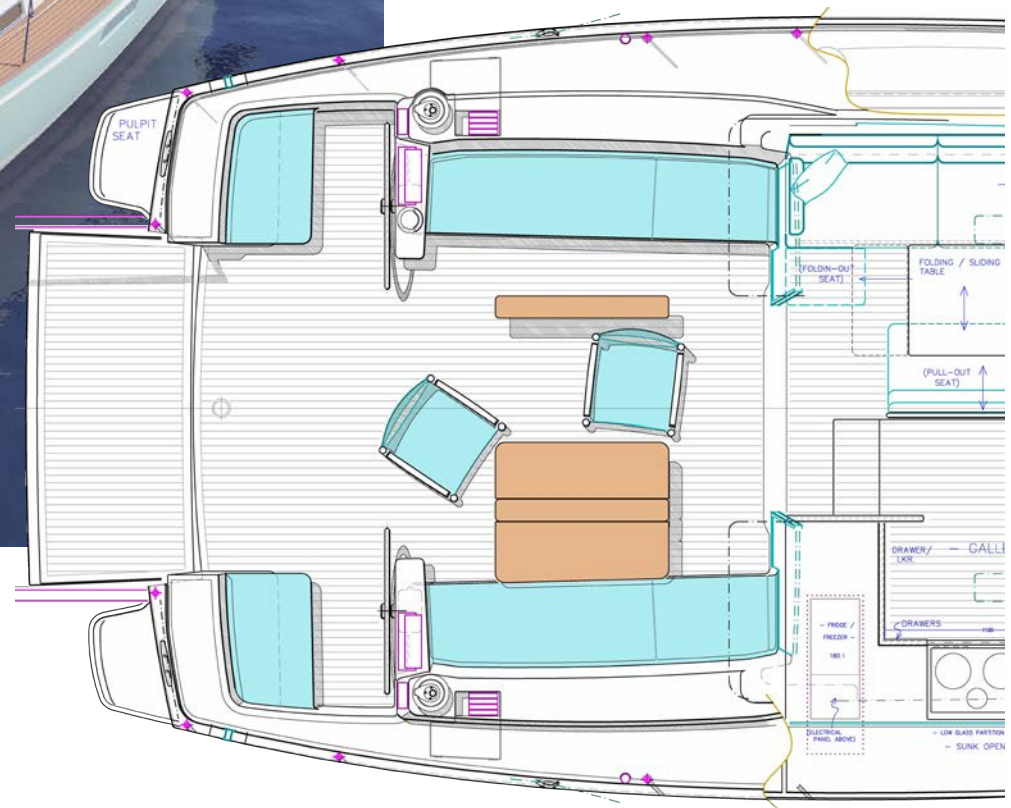
Like a home, without a fixed address. The new Heyman 42' PPH gives you home comfort without losing out on sailing – a stately bedroom, a light comfortable deck salon and a lovely front porch.



What is she?



All spaces are open, generous and easy to access. The cockpit, main cabin, galley and lower salon areas flow together as a whole.



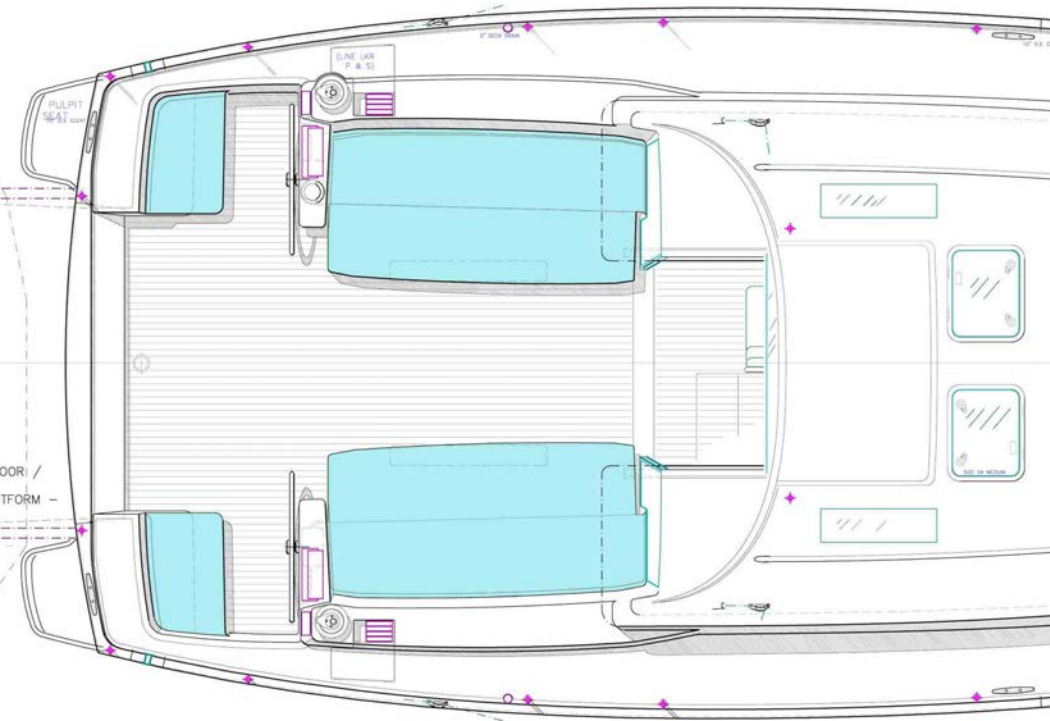
In port you will get the impression of a modern beach house – out on water you will be aware of the speed and easy handling of a well-performing, efficient cruising yacht.

The PPH's cockpit is somewhat magic. It is huge by any standard, at the same time, efficiently laid out for active sailing.

The forward part is for reading, talking over a cup of coffee or just being. It has a very generous seating area and twin tables. Aft, there is equally good room for the helmsperson.



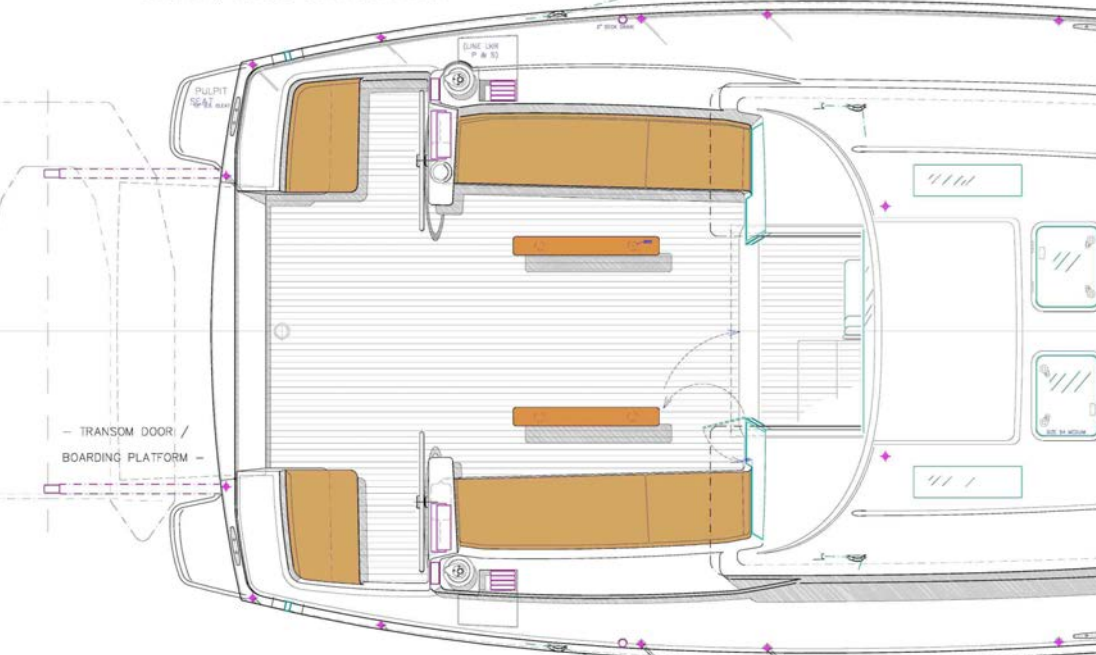
SEATS FOLDED OUT FOR SLEEPING OUTDOORS



COCKPIT, BASIC CONFIGURATION

GLASS BULKHEAD TO PILOT HOUSE

TRANSOM DOOR / BOARDING PLATFORM



(PERSPEX DOORS FOLD AWAY UNDER ROOF OVERHANG)

In port, you want a different kind of comfort. Lowering the transom, it serves as a swim platform and place for the dinghy. It also makes the cockpit floor even larger, leaving generous space for lounge chairs, yoga or sunbathing.

When it's too hot inside, enjoy the light wind in the cockpit. Take a rest, find some shadow, lay the table for a supper enjoy the sun setting and the stars making the scene.

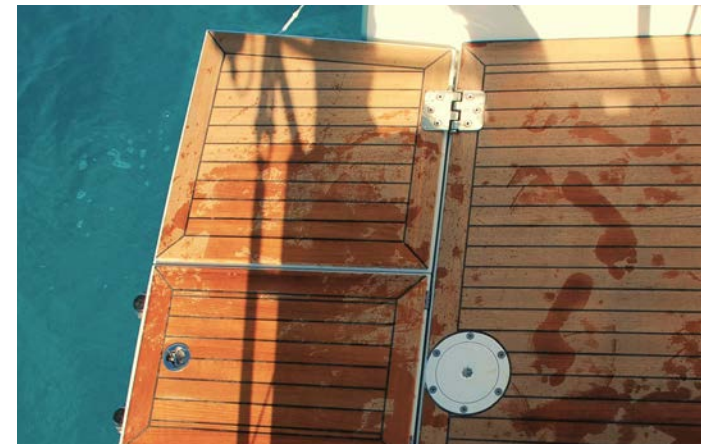
Or, when the night falls, fold out the seats into two good beds and roll out the mattresses to sleep under the bimini roof.

Living by the seaside



With its glass bulkhead and doors open, an extensive dining – patio area is created.

A person in the pilot house will be at the same level as somebody on the other side of the glass bulkhead, in the cockpit. It is all, in effect, one big room.



A WARM INTERIOR & A VIEW WITHOUT LIMITS

The indoors seating has room for 6 persons around the table. There are two big chart drawers under the small seat in the middle, and the aft corner of the sofa is a fine place for watch keeping.

The kitchen is big enough for two people cooking, with a lovely view of the surroundings.

There is a forward smaller salon two steps down from the galley. This corner will feel more private, a nice place for an afternoon tea, watching TV or closing one's eyes for a second. The sofa also serves as an extra sea berth.



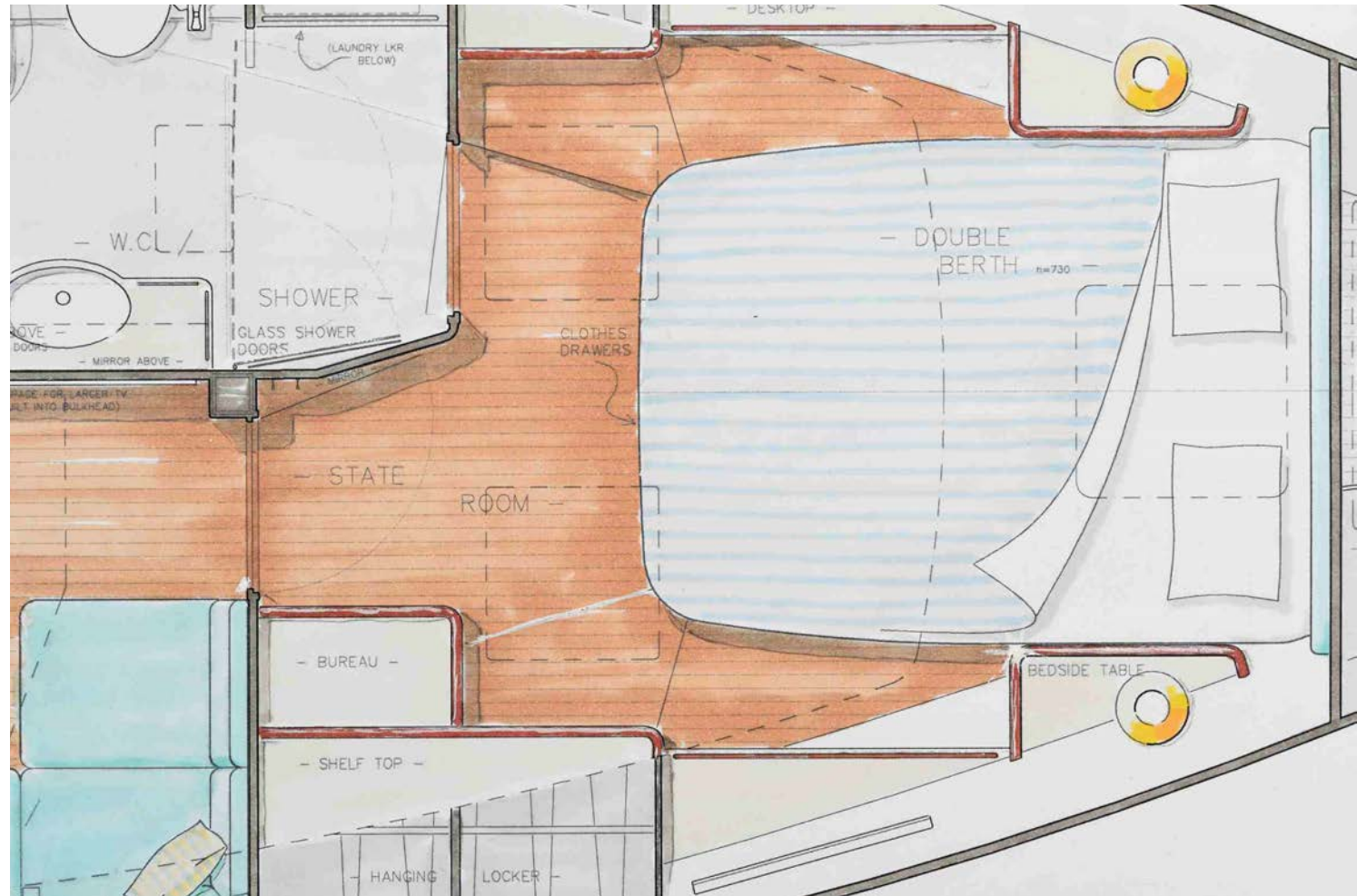
Home comfort

The forward owner's cabin is absolutely unique in a yacht of this size, with a queen size bed, 1,6 m (5' 2") wide all the way up to the forward bulkhead.

Waking up you will be able to look out of the hull windows and, if the door is open, you can see all the way aft to the cockpit.

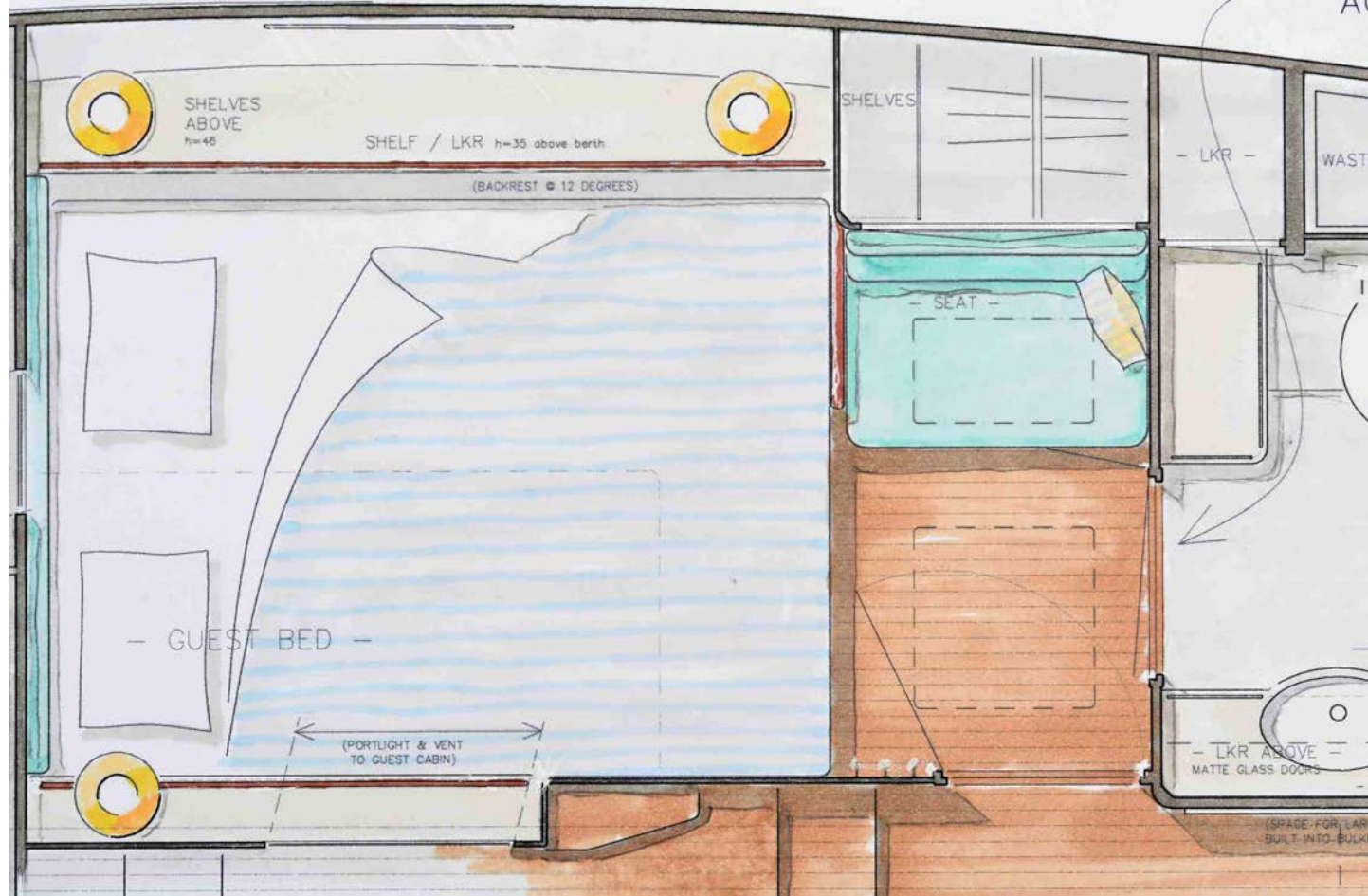
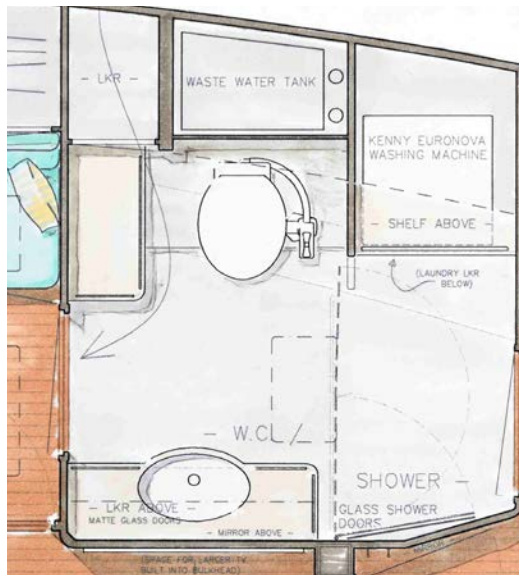
The bed is fitted with quality upholstery, a mattress pad, bedside tables and reading lights, two big hanging lockers, a bureau and

clothes drawers under the bed. Plus, there are two deck hatches for even more light and ventilation.



SPACE FOR FRIENDS

The PPH offers a guest room for when you want to bring friends, children or grand-children on a summer cruise. The guest cabin is opposite the lower galley or lower salon. It is an airy space with natural light from a hull window, skylight and window facing the main cabin and can be laid out with a double berth or two single berths. ▶

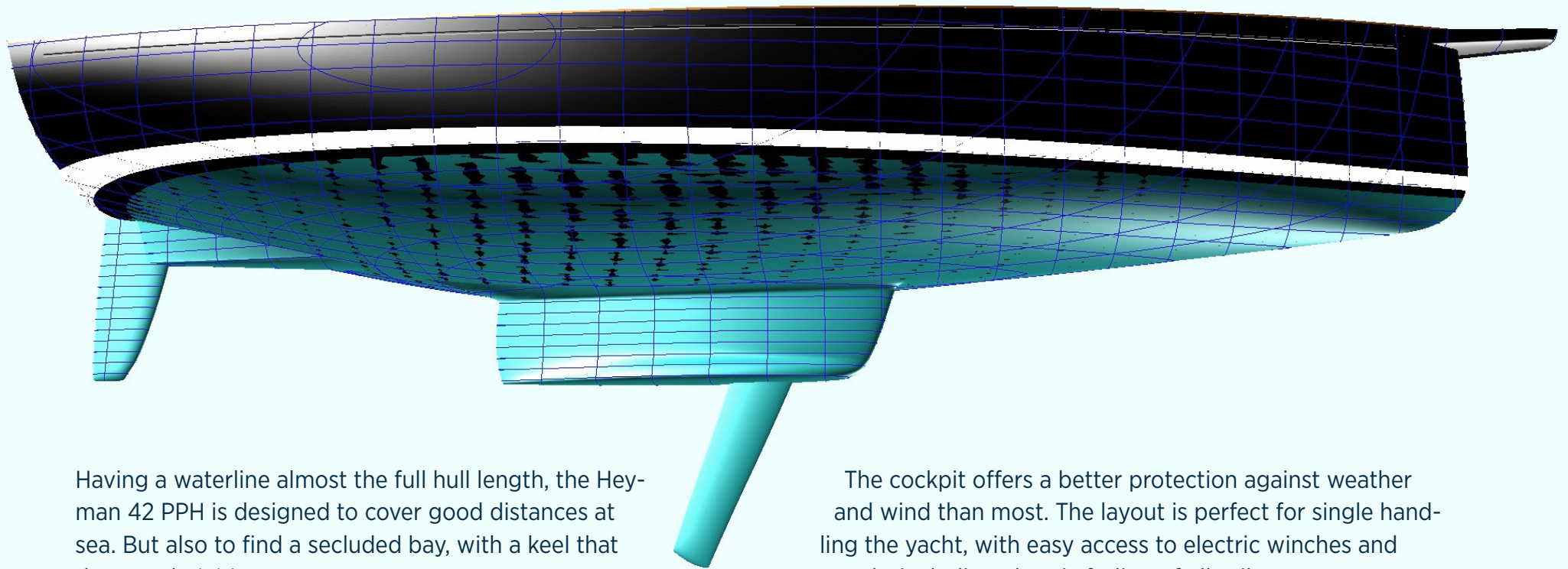


A proper bathroom, with lockers, mirrors, a separate shower stall with glass doors, room for a small washing machine and good light and ventilation, is part of the concept.

There is a private access from the owner's cabin forward. A second door is positioned facing the downstairs part of the main cabin, or the guest cabin.



Under sail



Having a waterline almost the full hull length, the Heyman 42 PPH is designed to cover good distances at sea. But also to find a secluded bay, with a keel that draws only 1.44 meters.

With the optional centerboard, hidden entirely inside the ballast keel, leeway is reduced.

The cockpit offers a better protection against weather and wind than most. The layout is perfect for single handling the yacht, with easy access to electric winches and controls, including electric furling of all sails.

There are two good-sized pulpit seats aft, lovely for watching dolphins in fair weather.

DIMENSIONS:

Overall length	13,52 m = 44' 4"
	including bowsprit
Length on deck	12,66 m
Waterline	11,83 m
Beam	4,30 m
Draft	1,44 m
Draft, centreboard down	3,01 m
Displacement	11 400 kg
Sail Area	89,0 m ²

ENGINE:

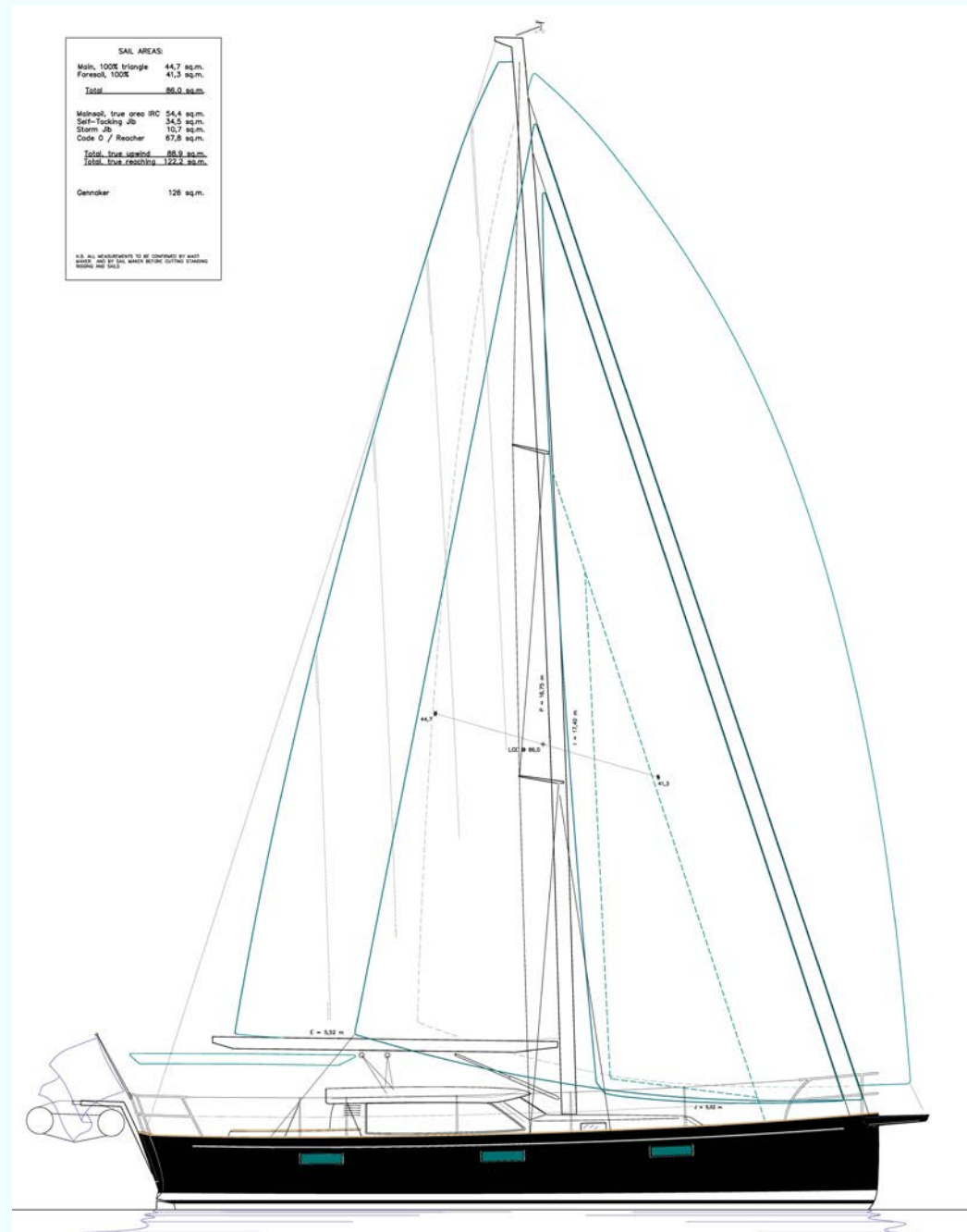
Volvo Penta D2-75, sail drive
Folding bronze propeller
Lewmar Bow thruster fitted as standard

RIG:

In-mast furling mainsail, electric as standard
Under-deck electric furling headsail as standard
Optional reacher / Code 0 on second electric under-deck furler
All by Seldén
Andersen electric winches fitted as standard

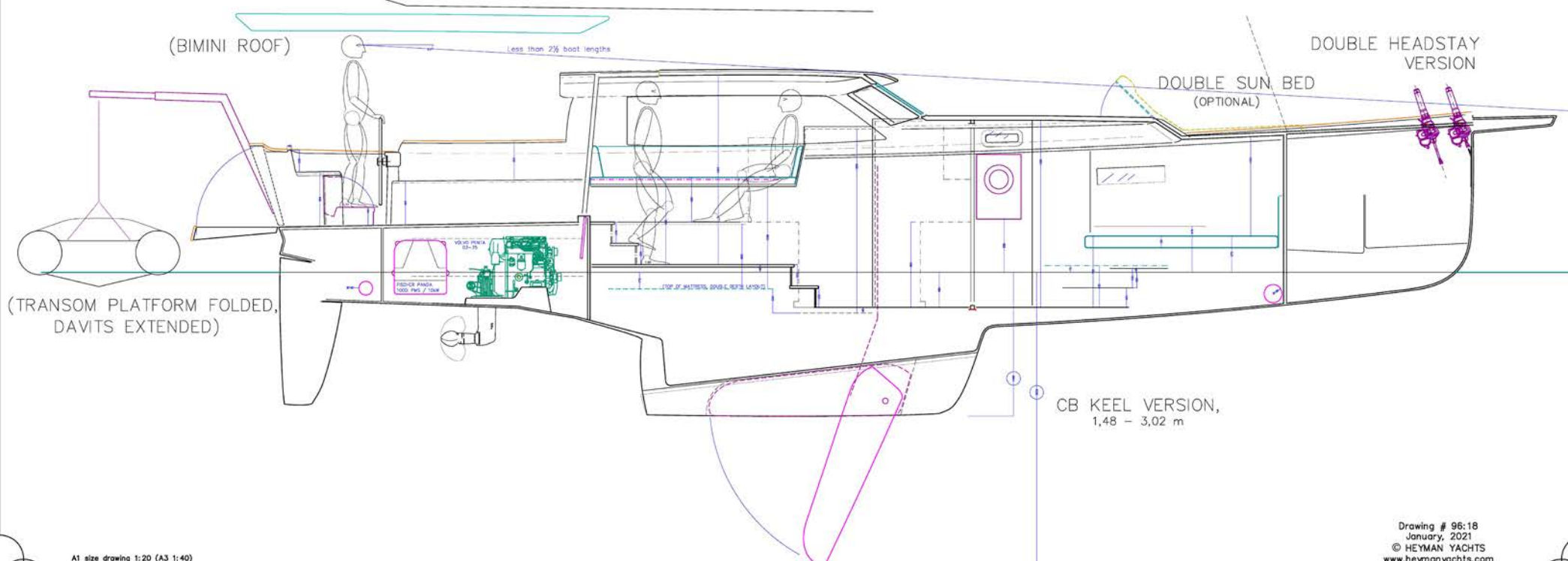
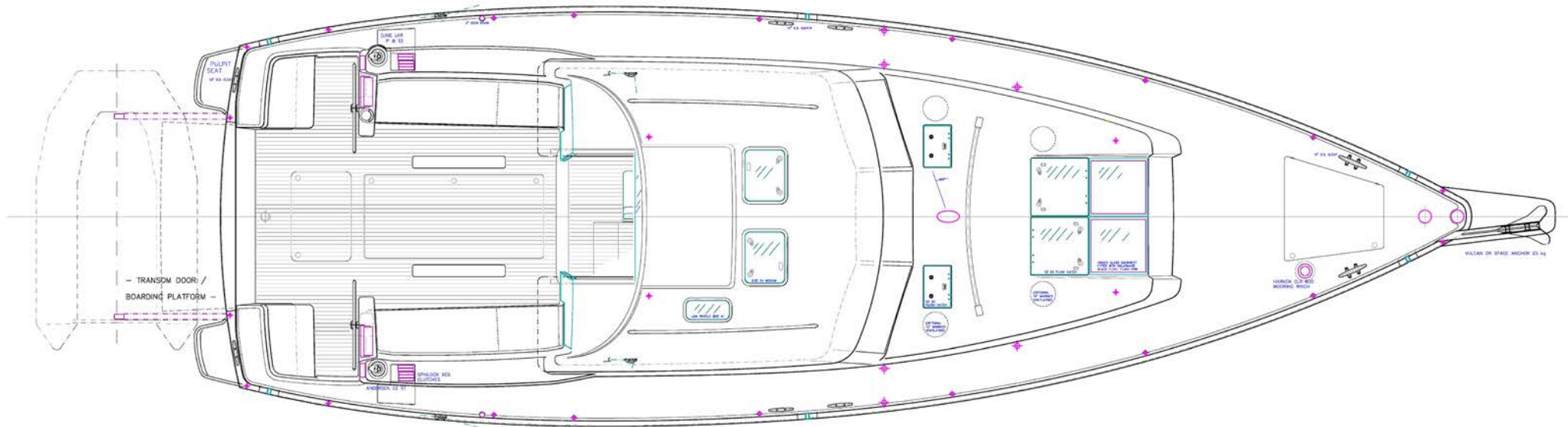
OTHER:

AGM battery bank 880 Ah, charger and inverter fitted as standard
Tank volumes as required, up to 1100 liters total
Full anchoring equipment, deck wash
Full B&G instrumentation (all fitted as standard)



42' POCKET PILOTHOUSE CRUISING YACHT

DECK LAYOUT & ELEVATION, DETAILS

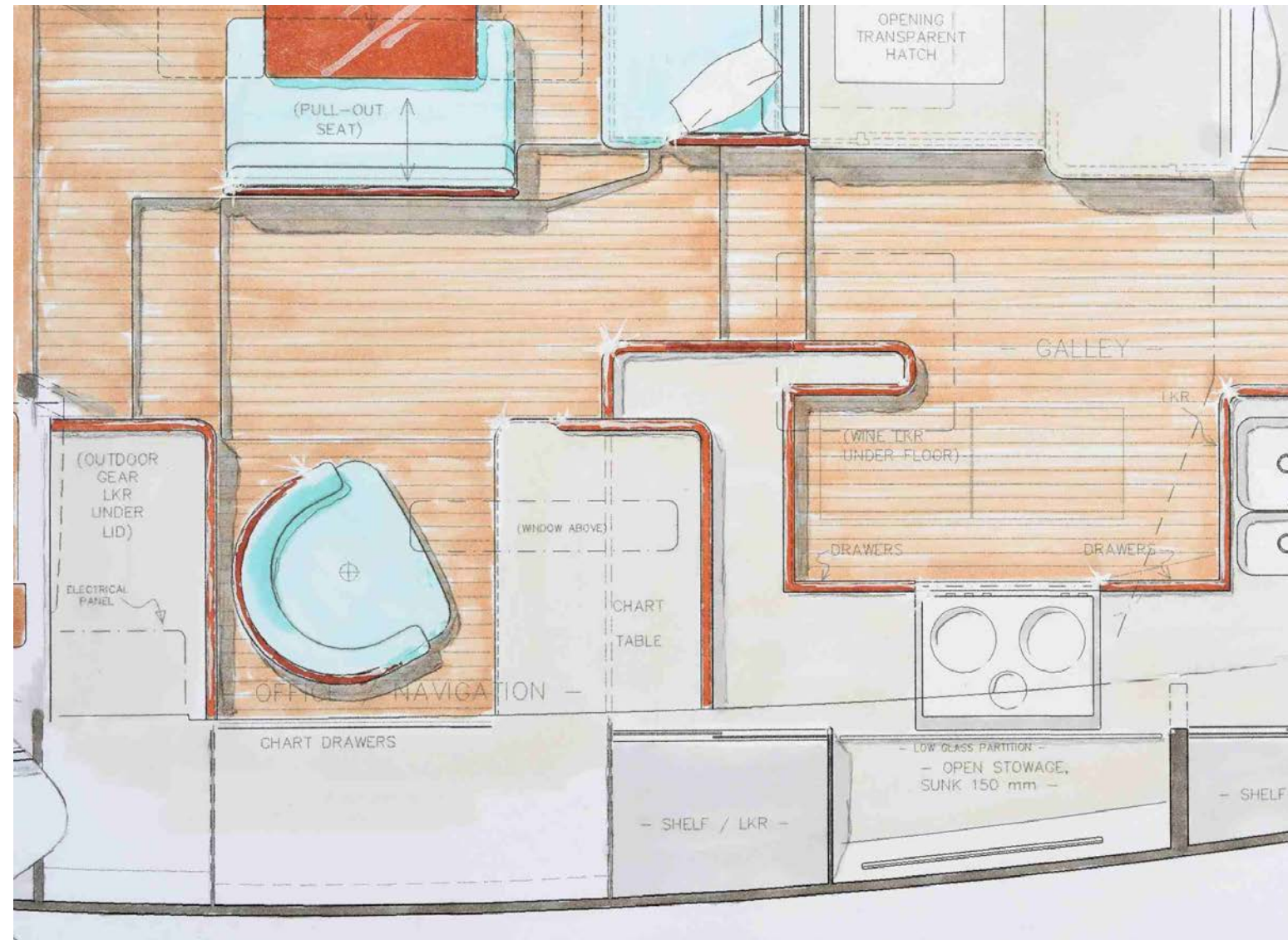


LAYOUT ALTERNATIVES

There are other layout options for the yacht - an office/nav station upstairs, with good visibility for long passages. In this case the galley is forward, with 2.30 metres standing headroom and surrounded by big windows.

Even from here you can overlook the entire yacht, from bow to stern.

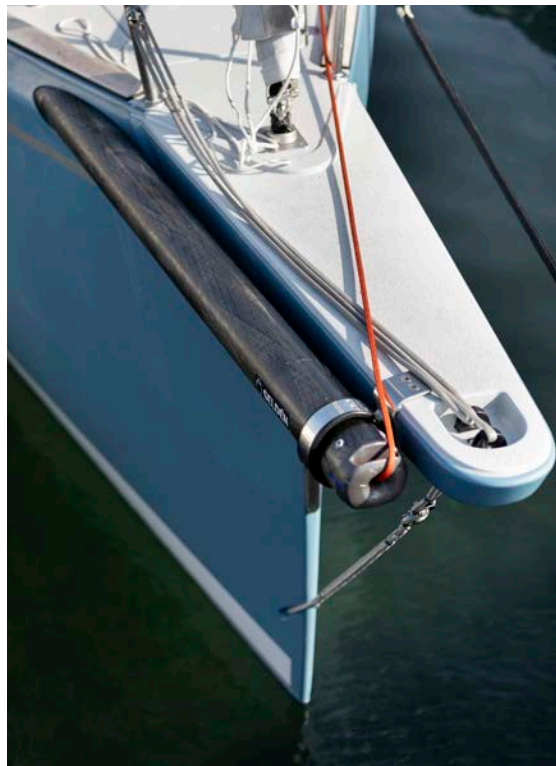
The two bedrooms can be laid out in different ways, with a small sofa in the owner's cabin, twin berths instead of a double, and more.



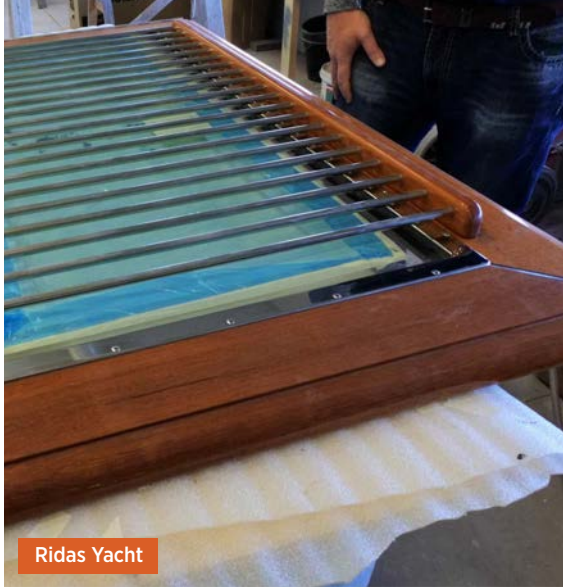
LEGACY

We have designed yachts big and small for three decades, all with a somewhat unusual attention to detail and built to perfection by the best boat yards.

All are still sailing, meticulously maintained, many under their original ownership.



Most of our designs are based on extensive scientific research.



Ridas Yacht



Ridas Yacht



Gabriel Heyman, Award-winning Yacht Designer

QUALITY

The 42' PPH has been developed over the course of several years by yacht designer Gabriel Heyman and his team; trying concepts, scrutinizing ideas, testing alternative solutions and fine-tuning the design, inside and out.

The yacht is built to order by one of the finest and most experienced boat builders in Northern Europe, Ridas Yacht, near Tallinn, Estonia.



Celeste 37 detail



Fantasi 44 PH

” A home without a fixed address



HEYMAN YACHTS AB
Nya Varvet 85D, 42671 V.Frolunda, Sweden

web: heymanyachts.com | phone: +46 707 790 003 | email: info@heymanyachts.com

 **HEYMAN YACHTS**