

EQUIPPING LEADERS

In preparation to change their world, leaders are being equipped in 3 focus areas:



1 SPIRITUAL FORTITUDE

Understanding the Depth and Breadth of the Gospel

Gospel Depth – IN CHRIST

In His completed work we are complete

We DIED and were BURIED with Him

We were RAISED and made ALIVE with Him

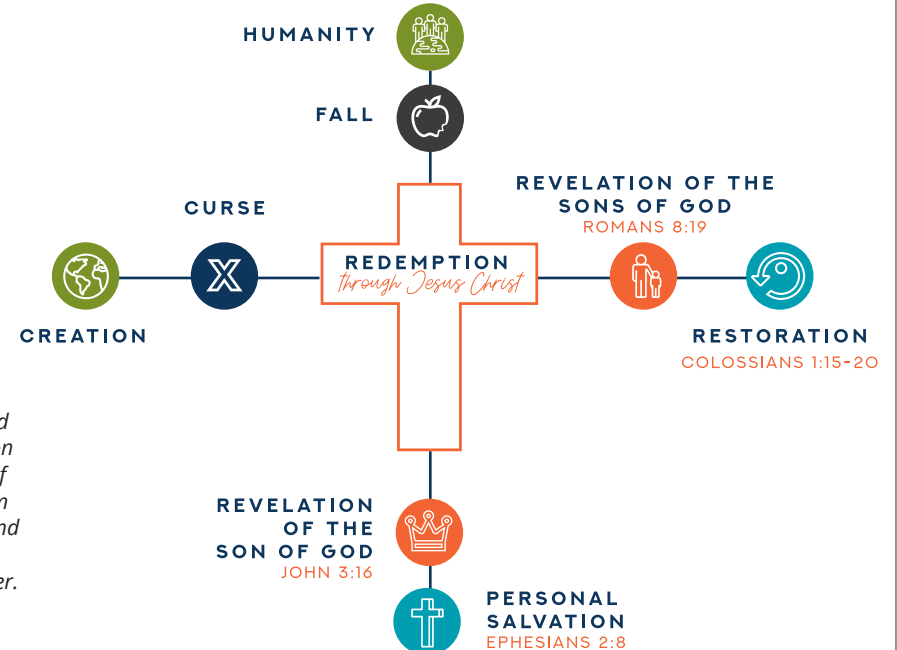
We Share in His Triumph and ASCENSION and are SEATED with Him

Soul Care

Taking care of your soul by practicing self leadership.

- Replenish Relationships
- Resilience
- Rest

Gospel Breadth – CHRIST AS LORD OF ALL

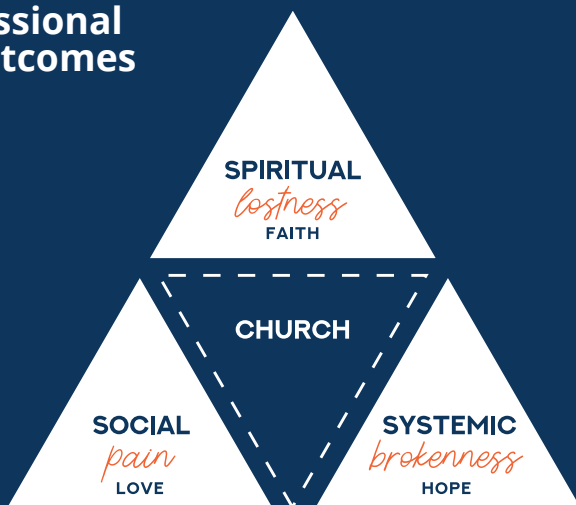


Eph 1:20 – 21 (Message Translation)
 All this energy issues from Christ: God raised him from death and set him on a throne in deep heaven, in charge of running the universe, everything from galaxies to governments, no name and no power exempt from his rule. And not just for the time being, but forever. He is in charge of it all, and has the final word on everything.

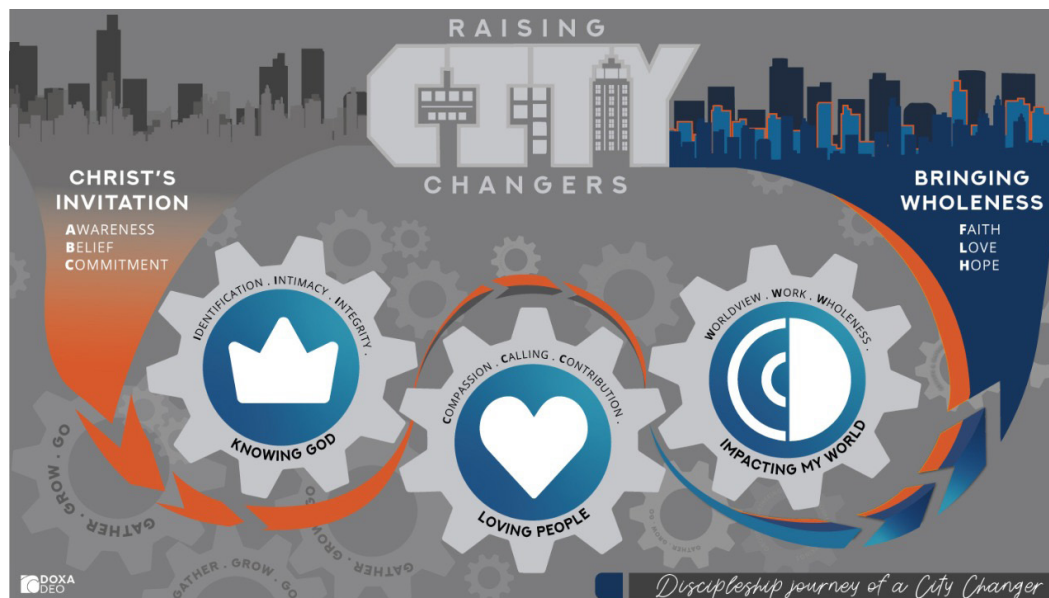
2

STRATEGIC INSIGHT

Missional Outcomes



Raising Missional Individuals - CITY CHANGERS



Establishing Missional Communities – CHURCHES

Eph 1:22-23 (The Message)

At the center of all this, Christ rules the church. The church, you see, is not peripheral to the world; the world is peripheral to the church. The church is Christ's body, **IN** which he speaks and acts, **BY** which he **fills everything with his presence**. At the center of all this, Christ rules the church. The church, you see, is not peripheral to the world; the world is peripheral to the church. The church is Christ's body, in which he speaks and acts, by which he fills everything with his presence.

MOBILIZING

People into their calling

ENGAGING

Existing institutions with Kingdom influence

MODELING

Kingdom expressions in different spheres of society

Engaging Missional Eco-Systems – CITIES

John 17:21

...that they all may **be one**, **AS You, Father, are in Me, and I in You; that they also may be one in Us**, that the world may believe that You sent Me...

CONNECT – creating unity

Facilitate opportunities for leaders to discover, dialogue and do life together.

COLLABORATE – catalyzing action

Identify goals that can be reached together.

CELEBRATE – cultivating mission

Measure the positive outcomes and make them public.

3

SERVANT LEADERSHIP

Missional Leadership

Crafting and communicating a vision and embracing values that stir a passion for Mission.

Missional Culture

Aligning all actions to contribute to a constant awareness of Missional consciousness.

Missional Movement

Empowering and encouraging all role players and stakeholders to effect Missional engagement.