



# SATELLITE ROUTER **ODIN™**

## QUICK START **GUIDE**



Forsway Scandinavia AB  
Kanikegränd 3B  
541 34 Skövde, Sweden

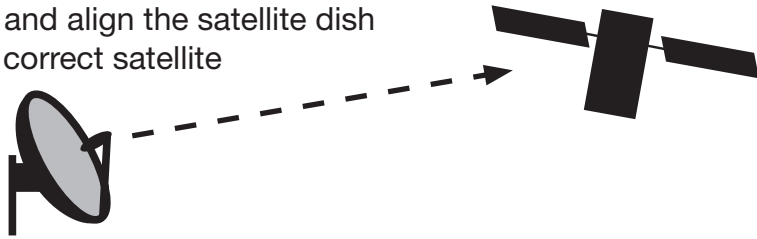
[www.forsway.com](http://www.forsway.com)

**FORSWAY™**

**FORSWAY™**

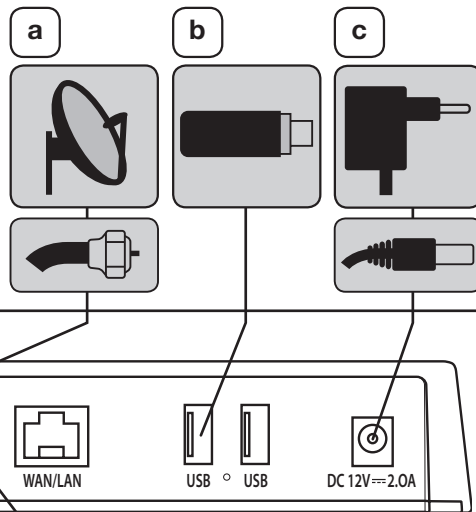
# INSTALLATION INSTRUCTIONS

1. Install and align the satellite dish to the correct satellite

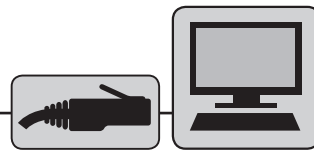


2. Connect cables

- a. Connect satellite dish
- b. Attach the USB Dongle (mobile)
- c. Connect the power cable to a wall socket

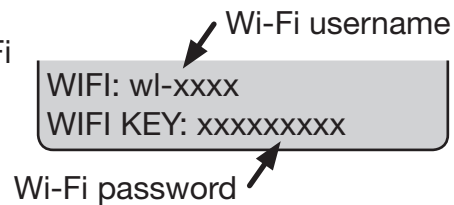


- 3 a. Connect Computer with Ethernet cable

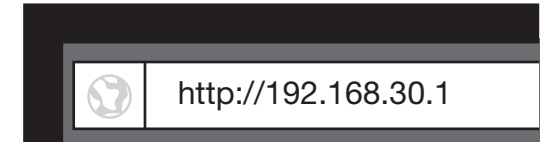


or

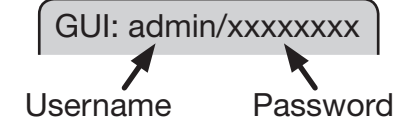
- 3 b. Connect Computer with Wi-Fi  
Log in with instructions on label underneath the router.



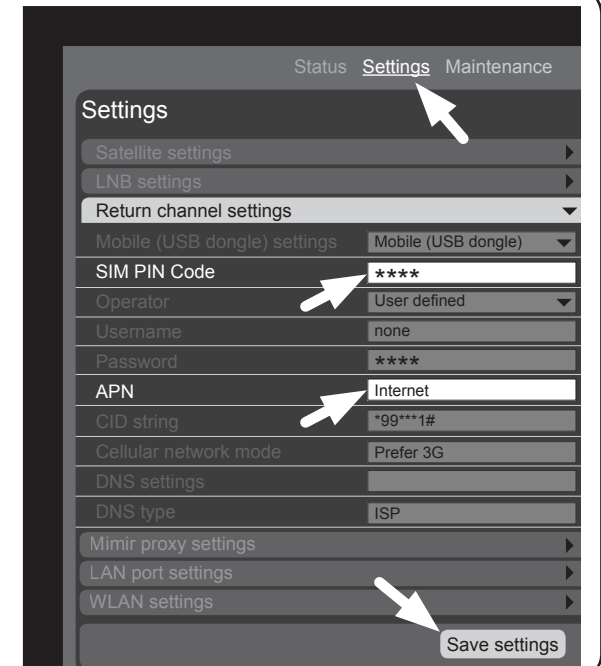
4. In the computer, open a web browser and enter: `http://192.168.30.1` in the address field.



Log in with instructions on label underneath the router.



5. Select Settings and Return Channel. Enter SIM card code in the PIN code field. Enter APN in the APN field if needed. Press Save.



6. Select Status. Check signal meters for satellite and mobile. Adjust antennas if necessary.

