

PRESIDENT'S MESSAGE

18th May 2017



Marie-Antoinette Minis

(ENOTHE President)

Dear members of ENOTHE,

In our strategy plan it has been stated that building partnerships among members is an important goal. Therefore, we the board are pleased to announce that several efforts have been taken by members to find contacts through board members. However the task of the board is to encourage and empower members to find partners through the network themselves during the year and at the General Assembly. This is why we invite you all to use the website and this newsletter to publish announcements to find each other whether this about a certain topic, exchange of ideas or sending in an abstract for a workshop where ideas can be exchanged during the Annual Meeting. Use the network to learn from each other.

Topics mentioned in several e-mails:

- How to use simulation contacts in education.
- How to examine practice placement education for students in the changing educational landscape.
- Support in the Design and Delivery of Degree programme In Occupational Therapy.

Also announcements and invitations find their way to the board:

“Vasile Alecsandri” University of Bacău, in collaboration with “Angel Kancev” University of Russe, Bulgaria and the associations of both countries have undertaken the venture of

organizing the [1st International OT Conference – Present State and Future Prospects on the 16th and 17th of June 2017 in Bacau, Romania \(PDF 489 kB\)](#).

Sincerely, PhD. senior lecturer, Marinela Rata

Further news:

The British Journal of Occupational Therapy invited the President of COTEC and ENOTHE to write an editorial about the output of the OT-EU workshops in Galway. The title of the publication is: Using evidence-based practice and research in political arenas.

Don't forget: share the newsletter with your colleagues.

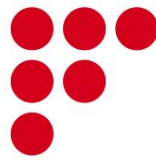
Sincerely yours,
Marie-Antoinette

3D-PRINTING IN OCCUPATIONAL THERAPY

18th May 2017



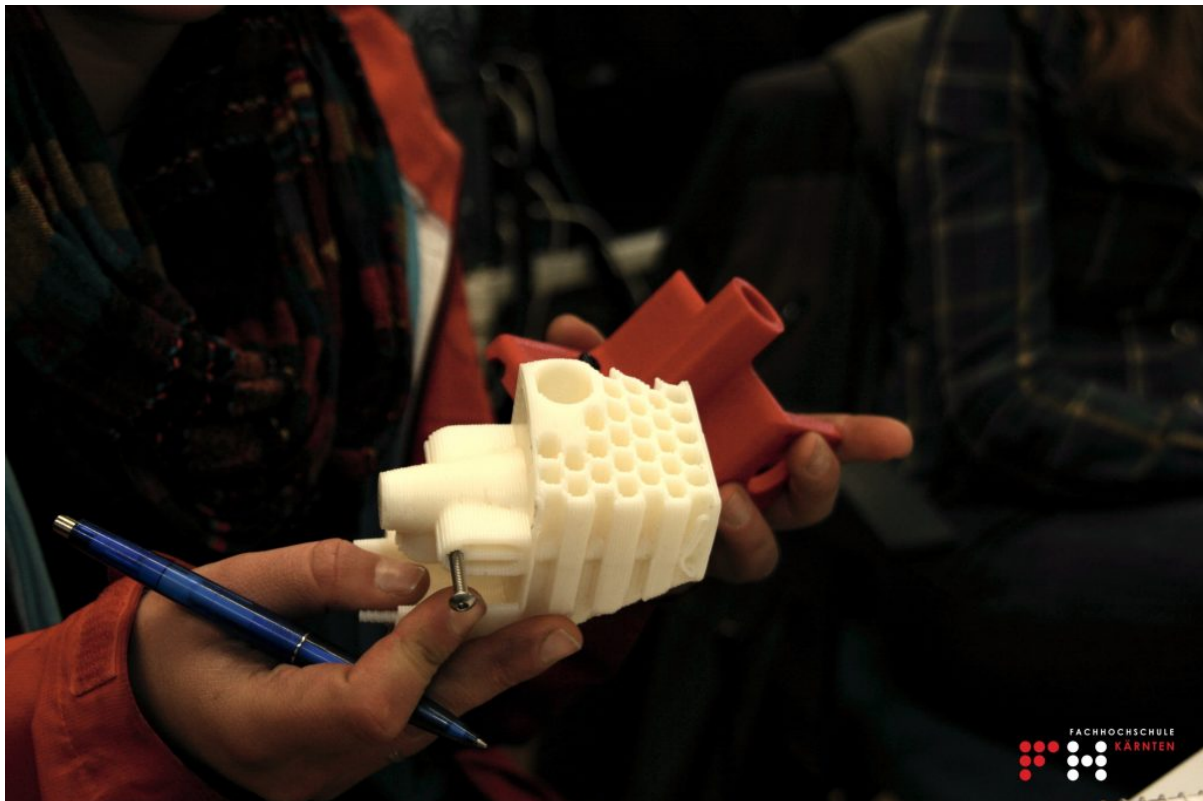
CARINTHIA
UNIVERSITY
OF APPLIED
SCIENCES

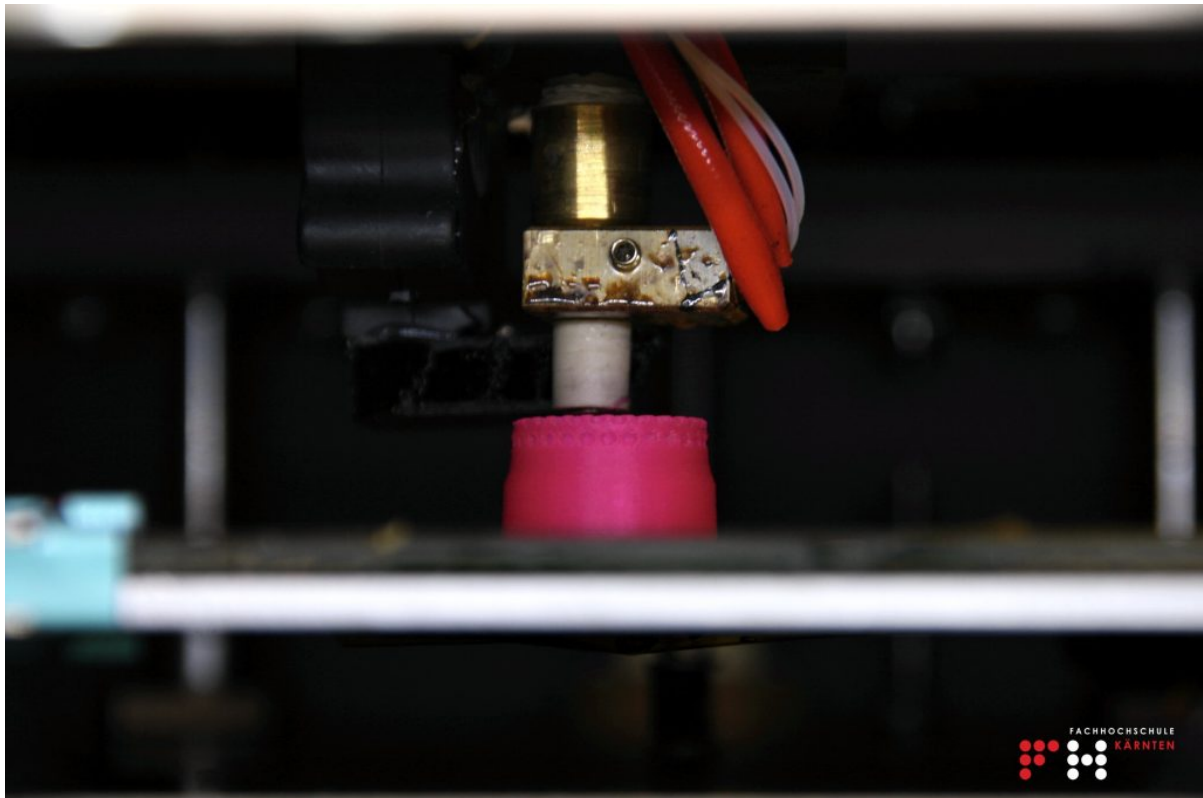


FACHHOCHSCHULE
KÄRNTEN

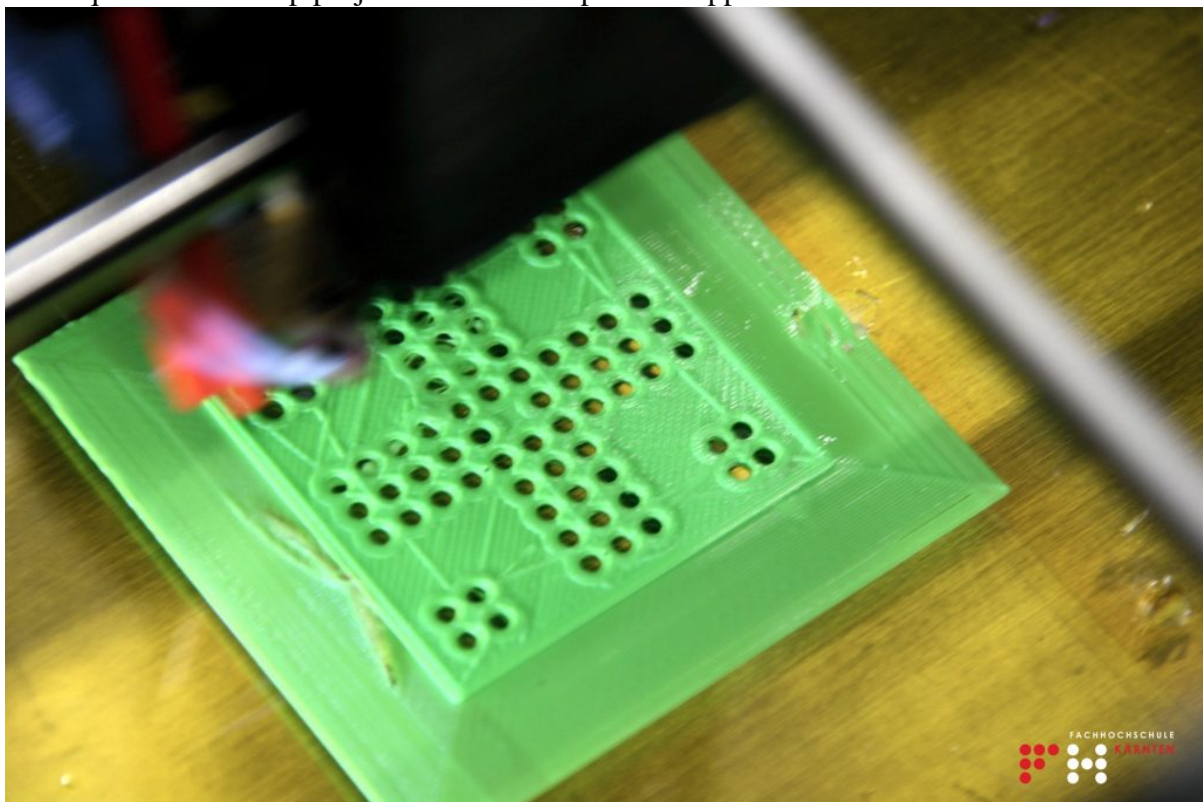
As part of the lecture “Project Development and Presentation” students at the faculty of Occupational Therapy at the Carinthian University of Applied Sciences were able to familiarize themselves with the process of additive manufacturing, also known as 3D-Printing.

3D-Printing as a manufacturing process is considered a technology with future potential in various fields. There are application fields where it is already in use today, e.g. cheap and rapid production of prototypes, in the aviation industry or in model making. At the present the technique is barely used in Occupational Therapy, hand and finger splints or custom made pointer-mouthpieces for paraplegic clients are actual research topics.





OT students and clinicians had the opportunity to attend a two-day-workshop, which was organized with external partners from Reprap Austria. Knowledge acquired in this workshop covered topics such as computer-aided-design (CAD), 3D-scanning and actual printing techniques and develop project ideas around possible applications in OT.



A prototype of a tactile memory game for sensory training will be designed and printed in cooperation with a regional neurorehabilitation hospital in Carinthia.



SPECIAL OLYMPICS WORLD WINTER GAMES 2017

18th May 2017

#Heartbeat for the world

Occupational Therapy students and lecturers at Special Olympics World Winter Games 2017

70 students from our programme grasped the opportunity to work as volunteers at the Special Olympics World Winter Games in Graz, Schladming and Ramsau in the province of Styria, Austria in March of 2017. Within the Special Olympic's very own health program "Healthy Athletes", and tutored by their instructors, some of them made use of their OT skills and expertise by practising stress coping strategies with athletes ("**Strong Minds**") and advising them individually on matters of prevention and health promotion ("**Health Promotion**"). Some others prepared and carried out occupation-based workshops for athletes, their coaches and their families. Another group of students developed their intercultural skills by supporting the international participants as a part of the "**delegation service team**". Our students contributed a total of **2504 voluntary work hours**. The program "**Strong Minds**" was so successful that it has been made a permanent element of the respected "Healthy Athletes" program.

Preparation for these activities had started over a year before the Games. Students analysed the athletes' needs at the Pre-Games, learned about non-verbal and intercultural communication, then devised their programs and carried out pre- tests with similar target groups.

Brigitte Loder-Fink; Stefanie Schwarzl; Gabriele Schwarze; Romana Toriser (FH JOANNEUM University of Applied Sciences, Graz / Bad Gleichenberg, Austria).

Photograph showing Timothy P. Shriver, Chairman of Special Olympics, with OT students and instructors.



THE MAYERS' LIFESTYLE QUESTIONNAIRES

18th May 2017

Accessing the MAYERS' LIFESTYLE QUESTIONNAIRES (1, 2 and 3) in English, Norwegian, German, French and Bulgarian: www.yorks.ac.uk/mayerslsq

Hello, ENOTHE friends, my old website has 'crashed' and so here is the new one to enable you to access these person-centred assessments for people with problems related to physical disability (MLSQ 1), mental health problems (MLSQ 2) and older age (MLSQ 3). They enable people to indicate their quality of life priorities. If you have any questions, please contact me: chrismayers2000@gmail.com



COEHRE CONFERENCE 2017 AND PORTUGUESE STUDENT CONFERENCE ENETO

18th May 2017

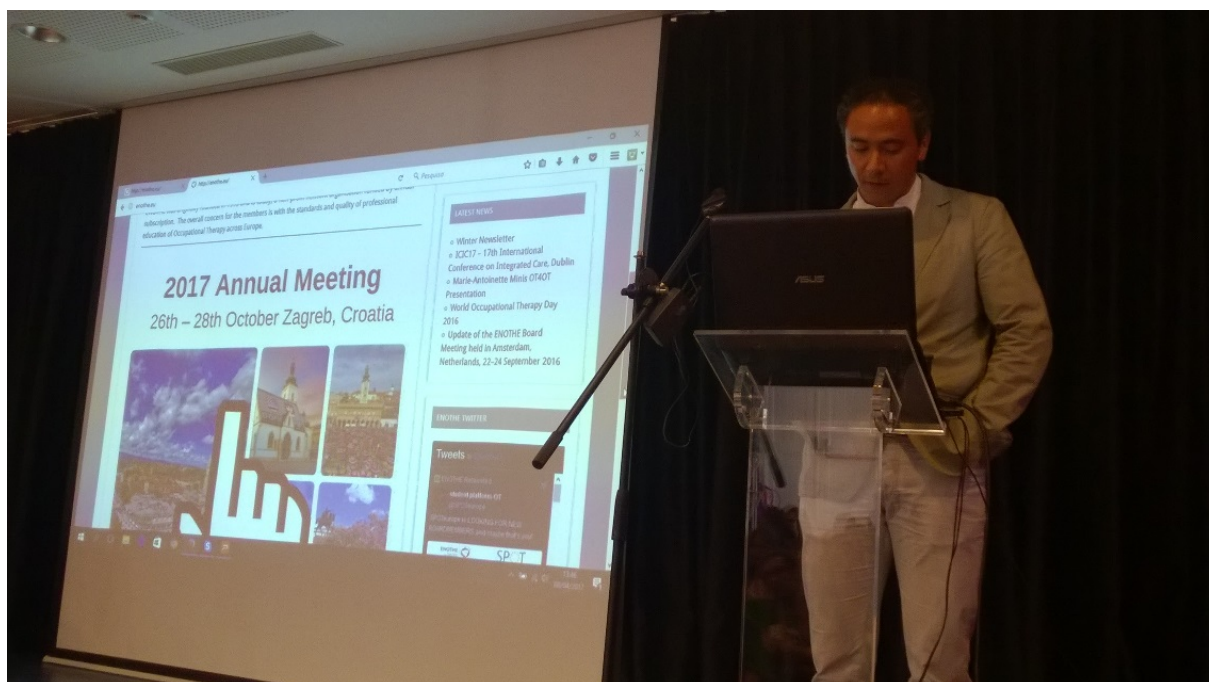
From April 5-7 2017 Vice-President of ENOTHE Johanna Stadler-Grillmaier and board member Soemitro Poerbodipoero had the opportunity to participate in the **COEHRE conference** in Sebutal, Portugal. COEHRE is (like ENOTHE) a network organisation and has as its aims to develop and

enhance the quality of Higher Education in Health and Rehabilitation by means of international cooperation in the field of education, research and development.



It is a limited but developed and efficient network with experience and focus on COEHRE Academy fostering professional development for teachers and students. The theme of the conference was 'educational implications of globalisation and global citizenship'. Towards our own annual meeting in Zagreb many keynote lectures and workshops stressed the importance of these topics in education and the complex inter-professional challenges we face now and in the future on humanitarian crisis, 21st century skills and educational development for globalization. To explore the way the COEHRE network and the COEHRE Academy work the representatives from both the COEHRE and the ENOTHE board had a meeting which resulted in the agreement that both network organizations will address future collaboration by putting it on the agenda of the networks boards. The two

organisations can possibly learn from each other and though COHEHRE's main focus is interdisciplinary, ENOTHE and COHEHRE members can benefit from mutual areas in education, opportunities for courses, conferences and student programs.



Being near Lisbon gave the opportunity to visit and present an ongoing Portuguese OT student conference in Estoril on April 8 and at the same time visit and explore the hosting university for the ENOTHE Annual Meeting in 2018. We were warmly welcomed by Sílvia Coelho Martins, adjunct



director of the 'Departamento de Terapia Ocupacional, Escola Superior de Saúde do Alcoitão.' It was a great opportunity to be able to present ENOTHE to the students and explain the history, the benefits and the upcoming conference in Zagreb to the students from all the four schools in Portugal. The head of the scientific board for WFOT18, Roshan Galvaan from South Africa, presented as well at the student conference.



STUDENT ENGAGEMENT

18th May 2017

Dear valued ENOTHE Members,

In March you received an invitation to nominate two students who want to be engaged in SPOTeurope and in student engagement for ENOTHE.



To enable and stimulate the engagement of students, ENOTHE co-operates with **SPOTeurope**: a platform which is created to encourage and increase the connection between OT students from all over Europe.

Students can exchange their experiences, knowledge and ideas in an accessible way via the website, the forum and on social media. Thank you for your nominations so far. It is good to know students want to be involved!

We have also received some questions and so we have made a frequently asked question list to serve you and your students:

Why is ENOTHE asking for students as contact persons?

Under Strategic Area 2: Partnerships, ENOTHE is developing strong partnerships locally, nationally and internationally to increase our presence and to raise our profile and visibility. Students have united and ask ENOTHE to support an aligned platform. **SPOTeurope** has over 70 members from different countries in Europe and is growing. Towards 2020 SPOTeurope and ENOTHE will collaborate to foster, advocate and promote student engagement in ENOTHE activities, Projects and Annual Meetings. We have asked each individual member to bring forward and nominate two OT students who are enthusiastic, internationally interested and willing to be involved in SPOTeurope at least until the ENOTHE Annual Meeting in 2018, to preserve continuity.

Are students who are automatically part of the SPOT board a part of the ENOTHE student board too?

No, currently **SPOTeurope** is looking for new board-members to help take the platform to a higher level. **Vacancies SPOTeurope (PDF 481.0 kB)**.

SPOT will select board members from the students who would like to contribute. Students

nominated do automatically become a SPOTeurope member, but students themselves are in the lead for their activities within SPOTeurope and ENOTHE.

There is no ENOTHE student board (yet). Nominated students will be invited to help explore a student board of ENOTHE. Therefore we need to take some steps. Step one is to identify students who want to be engaged long term. Step two is a student session during the Annual Meeting to explore possibilities. Step three will be the creation of an advice to the ENOTHE board on student engagement.

Do these nominated students have to come to the Annual Meeting in Zagreb?

Preferably yes, but no, not necessarily. Of course it would be better if the most engaged students also are given the opportunity by their institute to participate in the **Annual Meeting**, but nominating them does not lead to any obligations. For example, it could be very good to send one of these students and the next year the other student in combination with novice students. The ultimate goal is continuity.

What then is the benefit for students to be part of this group?

The benefit is that through **SPOTeurope** we create an active network of students of who can also become more active within ENOTHE. Therefore we need a contact list so we can inform students on activities and involve them so they and their institutes can profit from the international network of SPOTeurope and ENOTHE, be informed on the latest developments and opportunities in European OT Education, and be involved in contribution to a higher quality of OT education throughout Europe.

How much time do students have to invest in being a contact person?

For now, the estimation is that students invest an average of 1hr per week (40hrs a year), with an increase of hours leading up towards the Annual Meeting.

Are students being financially supported by ENOTHE?

No, students, alike their lecturers, invest their own time in internationalization. It is of course an investment in international competences for which an individual institute can decide to reward the accredited or invested hours as any other extracurricular educational activities. Students can participate in Annual Meetings to meet face to face according to membership.

What's next?

In May an ENOTHE representative will inform the nominated students once we have a complete and/or sufficient list of students. Students will be informed on preparations they can make towards the annual meeting and the student program.

Let students unite and contribute to a great and sustainable ENOTHE!

Warmest Regards,

Marlies Nijenhuis | President of SPOTeurope



W: www.spoteurope.eu

Twitter and Facebook: @SPOTeurope

E: info@spoteurope.eu | marlies.nijenhuis@outlook.com

Soemitro Poerbodipoero | Board Member ENOTHE



W: www.enothe.eu

T: (+44) 01904 87 6907 | Twitter: @ENOTHE1

E: info@enothe.eu | soemitro.poerbodipoero@enothe.eu

Facebook: European Network of Occupational Therapy in Higher Education (ENOTHE)

A: York St John University | Faculty of Health and Life Sciences | Lord Mayor's Walk | York
| YO31 7EX | UK

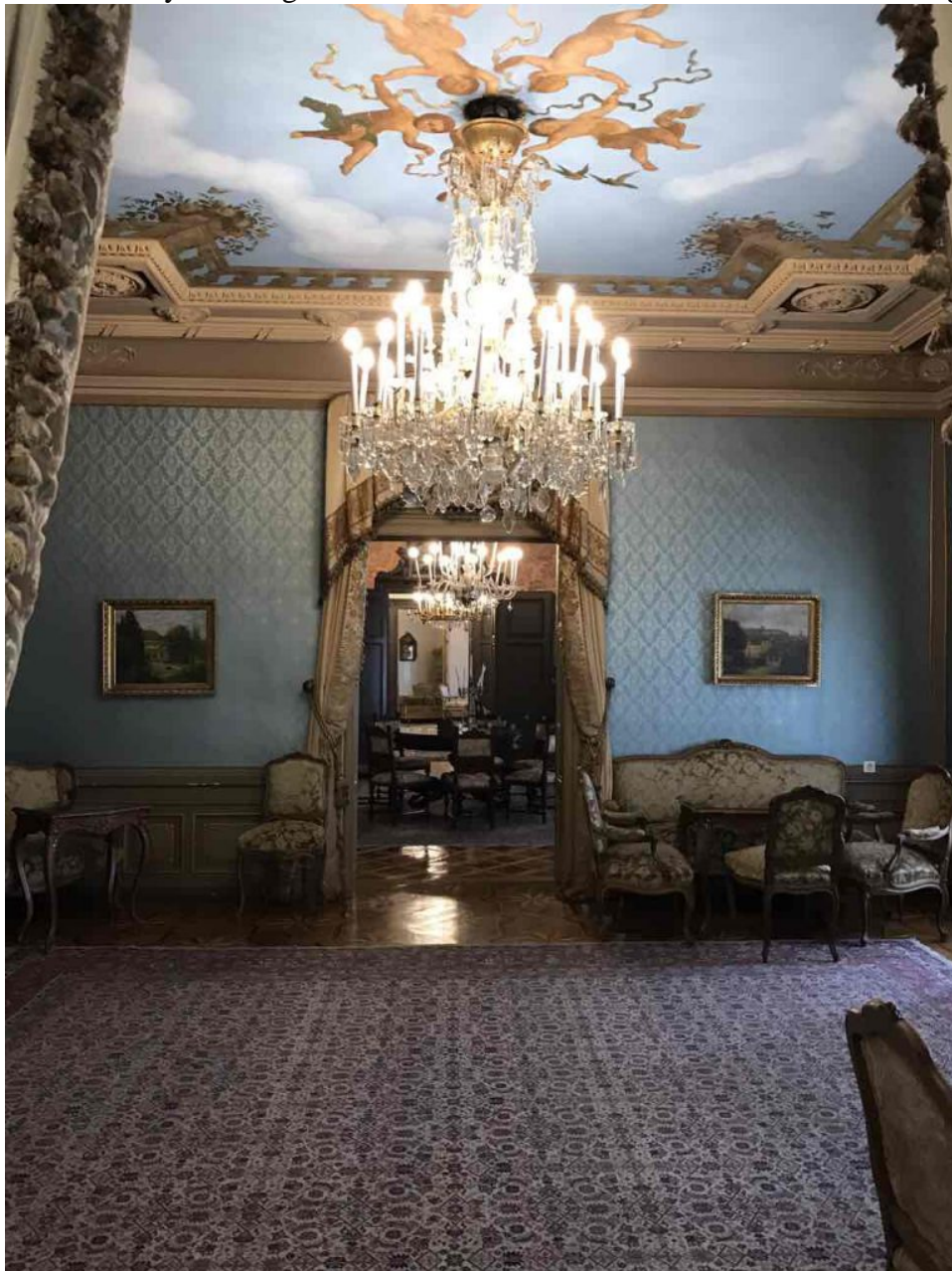
UPDATE ON THE PREPARATIONS FOR THE ANNUAL MEETING ZAGREB, CROATIA

19th May 2017

Article forwarded by Mandy Boaz, ENOTHE Coordinator.

Palača DVERCE (palaise Dverce)

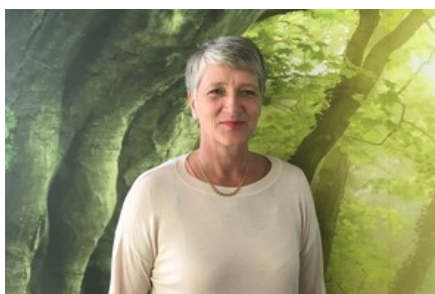
Well done to Saša Radić, host lead and her team in Zagreb, Croatia who have successfully secured the beautiful Dverce Palace to hold the **social drinks reception**. It is anticipated that the Lord Mayor of Zagreb will be there to welcome all the Annual Meeting participants.





Key note speaker

ENOTHE are pleased to announce that Susanne Guidetti will be joining our other **key note speakers**. Susanne is based at the Karolinska Institute, Stockholm, Sweden.



Hanneke van Bruggen Lecture 2017

At the May ENOTHE Board meeting to be held in Zagreb, Croatia, nomination submissions will be reviewed and decisions will be made as to who will be offered this prestigious opportunity to present at the forthcoming Annual Meeting. As soon as we have confirmation information will be circulated to ENOTHE members and further details will be uploaded on the website.

Abstract submission

This has been a very successful year and we have had over a 50% increase in submissions. The ENOTHE Board are currently reviewing all the submissions and final decisions will be made during the forthcoming 26/27 May Board meeting to be held in Zagreb. Successful applicants will be informed of the outcome of their submissions during June.

PROJECTS UPDATE

23rd May 2017

We have updated the Projects section of our website to make information easier to find.

The [PROJECTS](#) menu now highlights [CURRENT PROJECTS](#), [PAST PROJECTS](#) and Project [DOCUMENTS](#).

The final reports and publications are now available online for the following projects:

- JIP – Joint international project on health promotion and self management
- Master competences in OT
- Citizenship



Once a project has been completed please check our [RESOURCES](#) section to find the final reports.

Project Publications are listed under [ENOTHE DOCUMENTS](#) via the menu.

Last year the board decided to support the following 3 projects:

- Occupation-based social transformation
- ICC@home/CO-PILOT
- Citizenship II

More information (including Progress Reports) will be added to the website under [CURRENT PROJECTS](#) soon.

Thank you to all the members of all the project groups for their enthusiasm and effort in enhancing OT education.

All ENOTHE members are equally entitled to apply for project seed support. Do you have an idea for a project that contributes proactively to OT education?

WEBSITE AND SOCIAL MEDIA UPDATE

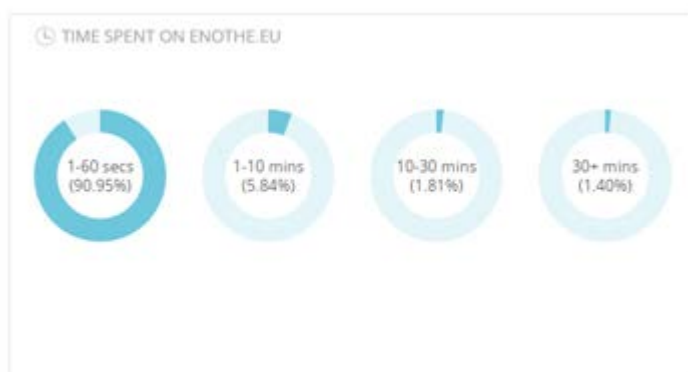
23rd May 2017

Website Update

Traffic to the **ENOTHE website** is set to more than double during 2017. In 2016 we had a total of 160,721 visits. So far for 2017 the website has received over 102,000 visits – at this point in 2016 we had received 58,295 visits.



However, these figures are not conclusive, as they do not account for unique visitors. At a glance 90-95% of visitors spend an average time of 59 seconds on the website. This means 5-10% of the total visitors are actively engaging with our website (up to 10,209 visitors).

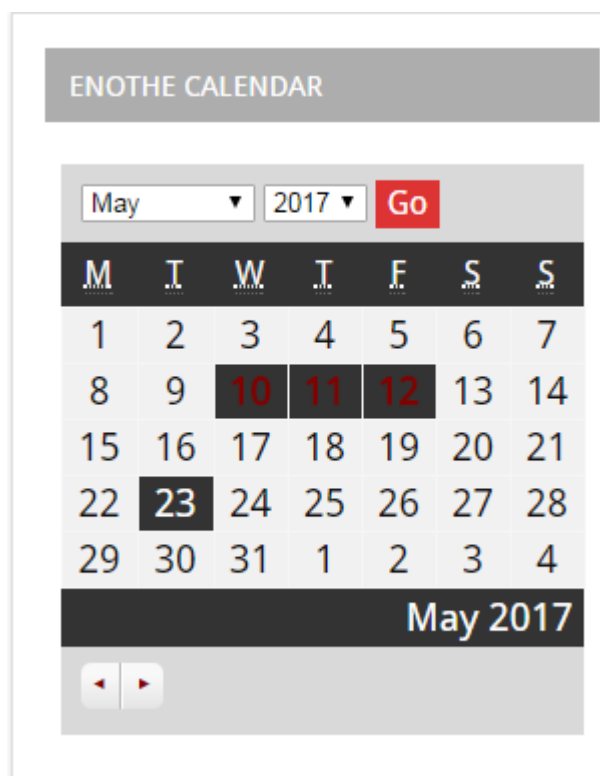


The highest number of visits in one month took place in April 2017, with a figure of 24,926. This was a busy time, particularly as it correlated with our call for abstracts announcement.

During the year the Office refined online processes to improve efficiency. We provided a facility for users to upload forms through the website. This enabled users to submit abstracts and other documentation related to the **2017 Annual Meeting** directly. This year we have received the highest number of abstracts we have seen for a number of years.

In regards to membership, we have consolidated the old application form and questionnaire to provide a single application form. Towards the end of last year we provided an open list of **ENOTHE member institutions** accessible by the public, which will be adapted further with additional information. Also, we have added a calendar feature to enable you to follow up and coming events in Health and Social Care in Education. This is available in the side bar along with news and our Twitter feed.

We will soon be ready to implement an online forum so that sharing activities and communication between members can be progressed.



We are always looking at ways we can improve our website. Please feedback your comments and suggestions. If you would like to help us, or if you have any ideas please **contact** the **ENOTHE Office**.



Twitter Update

We have now reached over 1200 followers on Twitter, an 11% increase since last year.

For the next milestone we would like to reach at least 2000 followers by the end of the year.

Can you help us in our attempt to raise the profile of ENOTHE and make Occupational Therapy more visible and valued across Europe?



Facebook Update

The official ENOTHE Facebook Page is attracting new 'Likes' daily. We have now increased our 'Likes' by 9% bringing our current total to 2,560.

It is evident from analysis that our most popular posts are when we share news of the latest publications in Occupational Therapy. These posts have had the most likes.



If anyone has any ideas for posts to increase engagement amongst our followers and to keep our momentum going on social media, please contact the ENOTHE Office.

We would love to continue to grow so please do share and connect with us.

Please remember to hashtag #ENOTHEZAG17 for Annual Meeting 2017 related posts.