

Decorating Details

For Week Commencing 27-02-2017

1st Floor - Master Bedroom

Window Wall

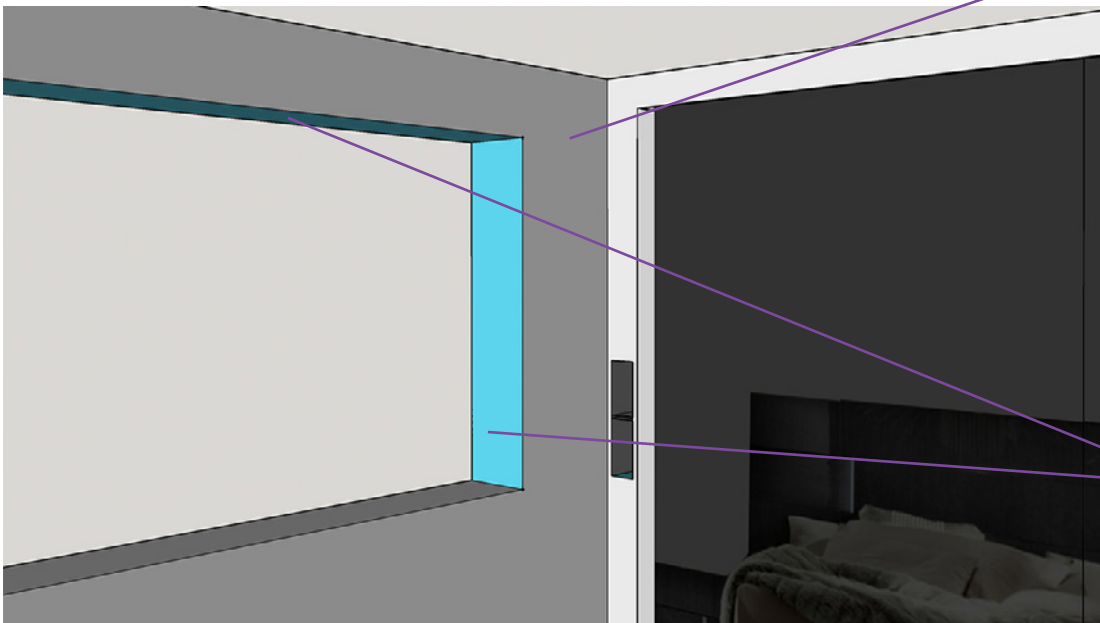
The window wall will now be the darker shade of grey Warm Pewter.



Reveals
Blue
(exact colour TBC in the week)

Gloss White sill

The reveals will be on the blue spectrum (colour TBC in the week)



Warm Pewter



Reveals
Top, Left and Right
Blue

1st Floor - Master Bedroom

Wardrobe

Pockets and Skirts



Skirts to be added.
Gloss white front
Ash Grey side
and inner frame

Reveals top, left and right -
Dark Gloss (colour TBC in the week)
the same as Bulk Head Frame

Reveals back
White Gloss or **Ash Grey**
(TBC in the week)

Frame Ash Grey



Pocket bottom
Blue
same as
window reveal

1st Floor - Master Bedroom

Bulkhead Frame

Dark and glossy to complement the bedroom furniture and glass doors

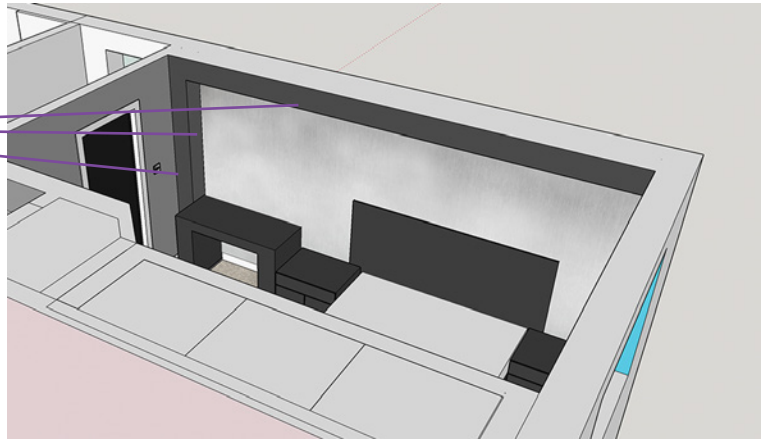


Darker colour than Warm Pewter and high gloss to match furniture and glass doors

Colour Options

Gloss Option 1

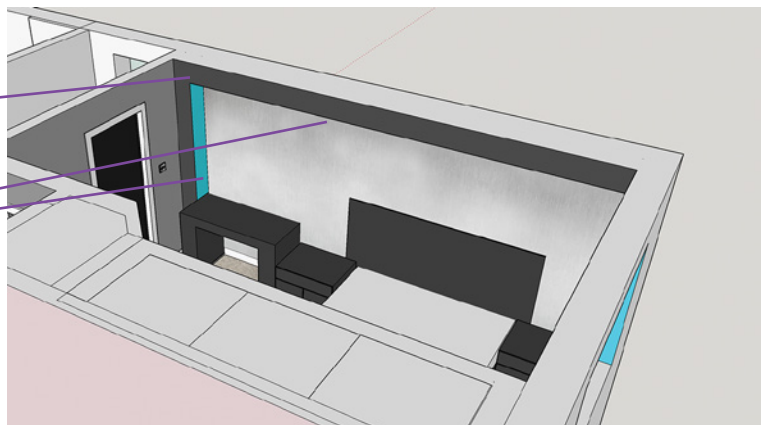
Full dark gloss - Face, Side, Inner



Gloss Option 2

Dark gloss - Face

Blue reveal - Side, Inner

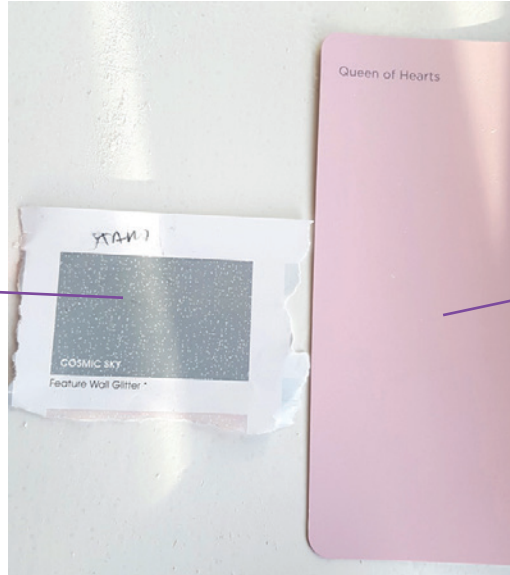


1st Floor - Alexis Bedroom

Feature Walls

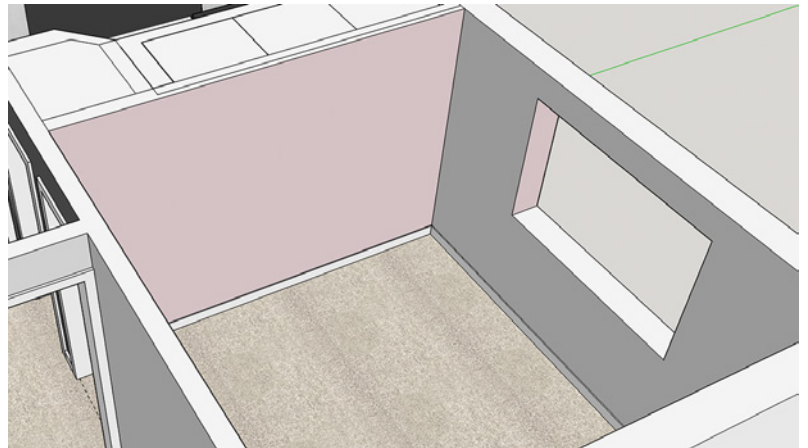
2 x Feature colour walls - Reveals to Match?

Glitter - **Cosmic Sky** (Valspar)
For feature wall detail at the top
position TBC at the house on Monday

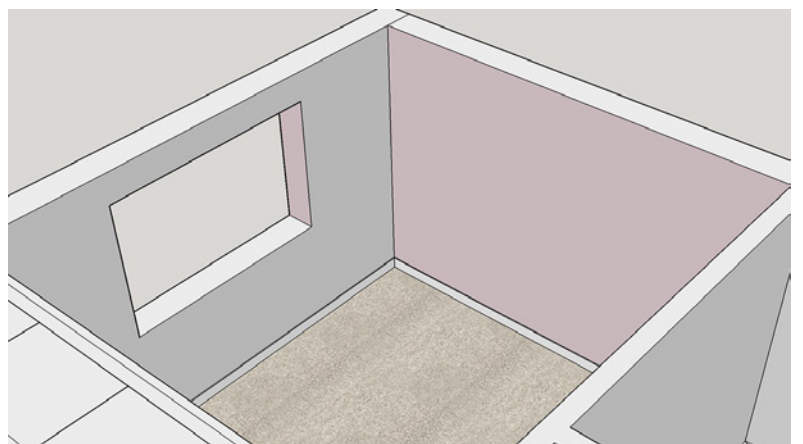


Pink - **Queen of Hearts** (Dulux)
The feature walls
left and right on entrance

Left Wall



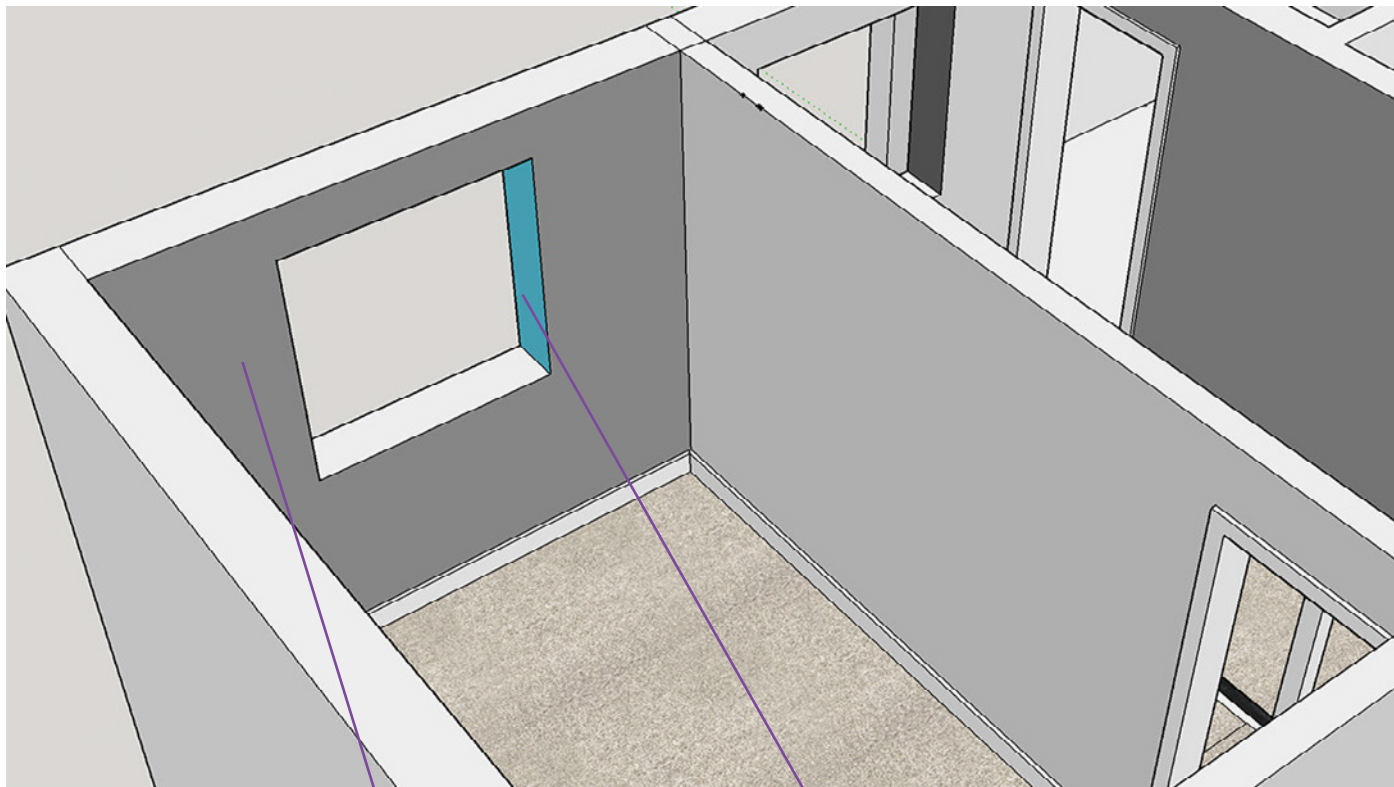
Right Wall



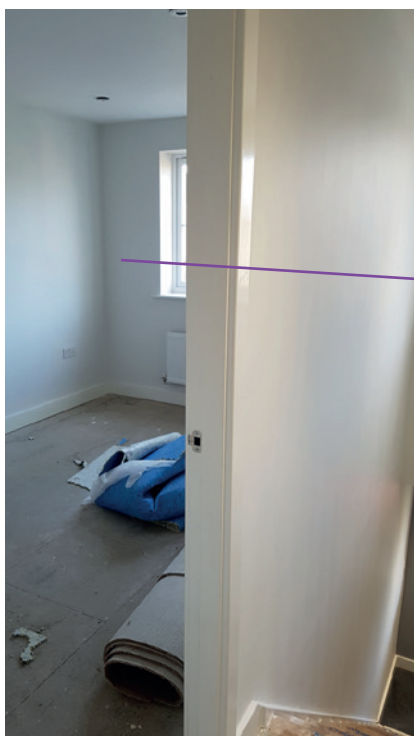
1st Floor - Spare Bedroom

Window Wall

Paint Warm Pewter with Blue reveals (Blue TBC in the week)



Reveal
Blue
(TBC)



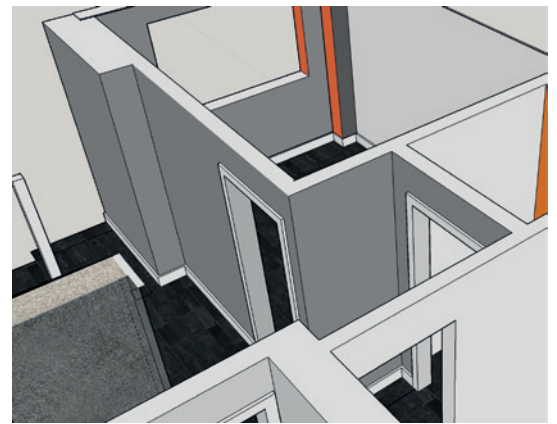
Change to **Warm Pewter**



Ground Floor - Hallway

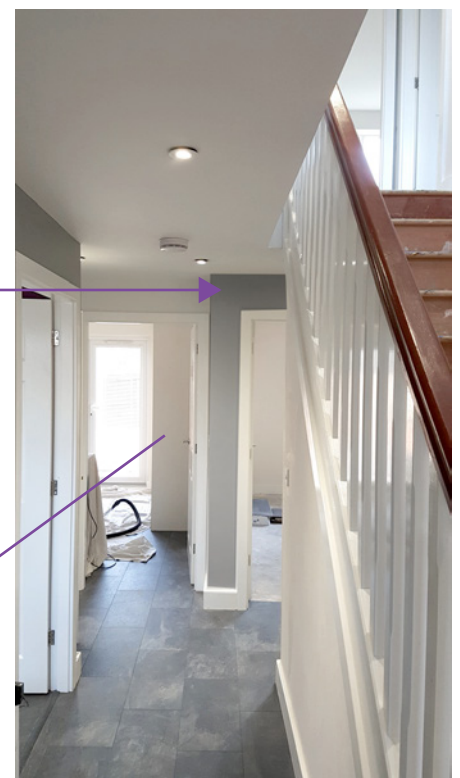
Facing Front Door

The walls left light paint **Warm Pewter**



Facing Kitchen and Lounge

The lounge entrance wall paint **Warm Pewter**

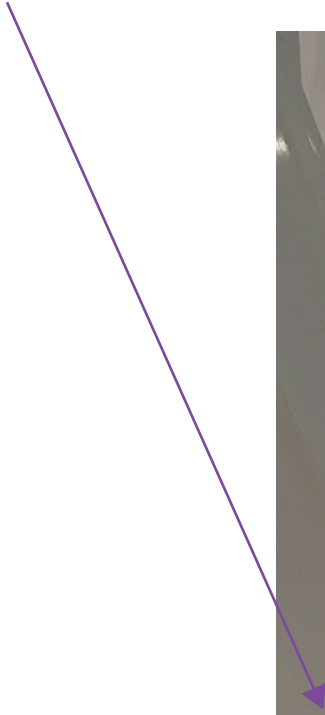


The kitchen entrance wall leave **Ash Grey**

Ground Floor - Hallway

Stairs Wall

Paint Ash Grey



Ground Floor - Lounge

Lounge Window Wall (all the rest Ash Grey)

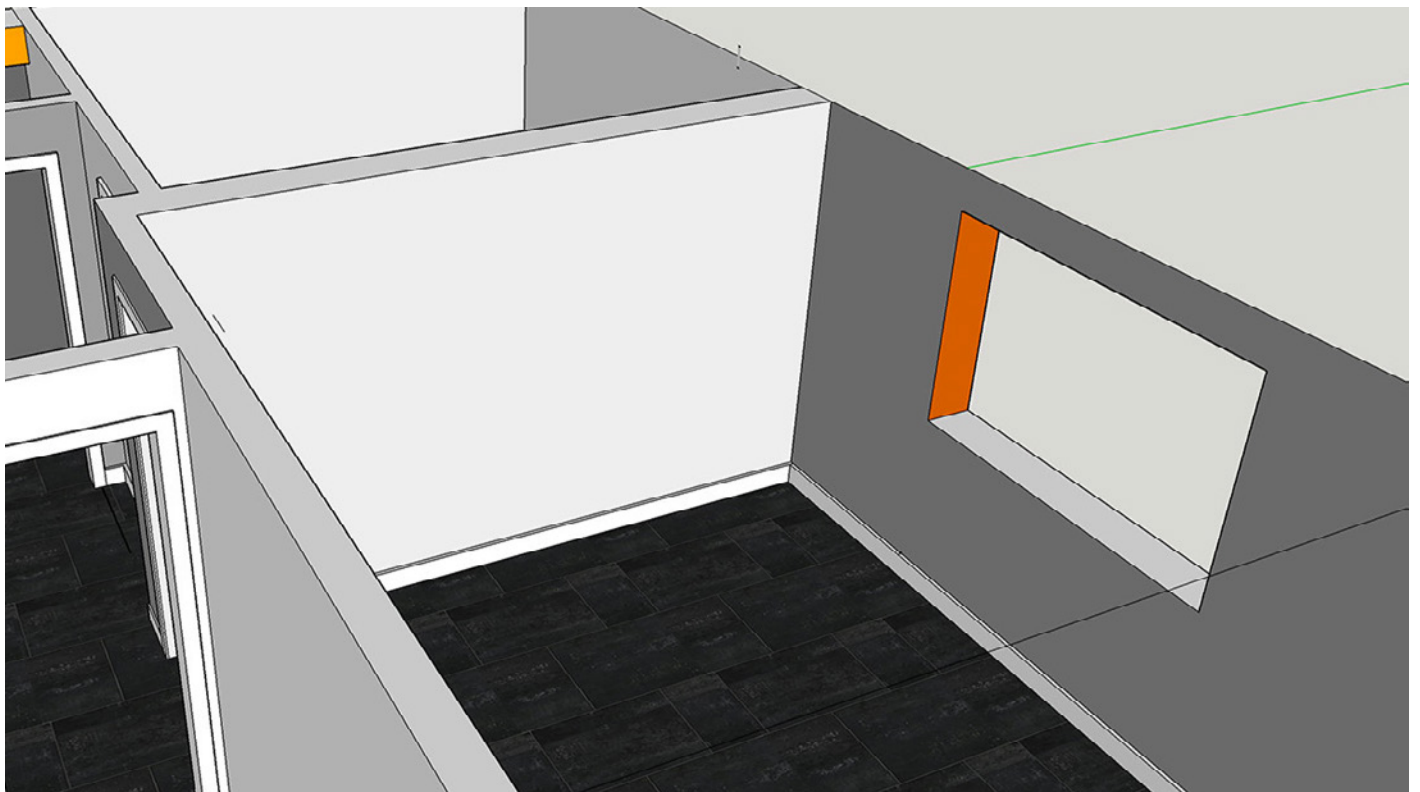


Window wall
Warm Pewter



Reveals
Retired Buoy (Colourcourage)

<http://www.diy.com/apartments/painting/decorating/hold-internal-paint-stairs-varnish/colourcourage-paint-retired-buoy/cat1720229.cat>



Ground Floor - Dining Room

Dining Room Window Wall and Soil Stack (all the rest Ash Grey)



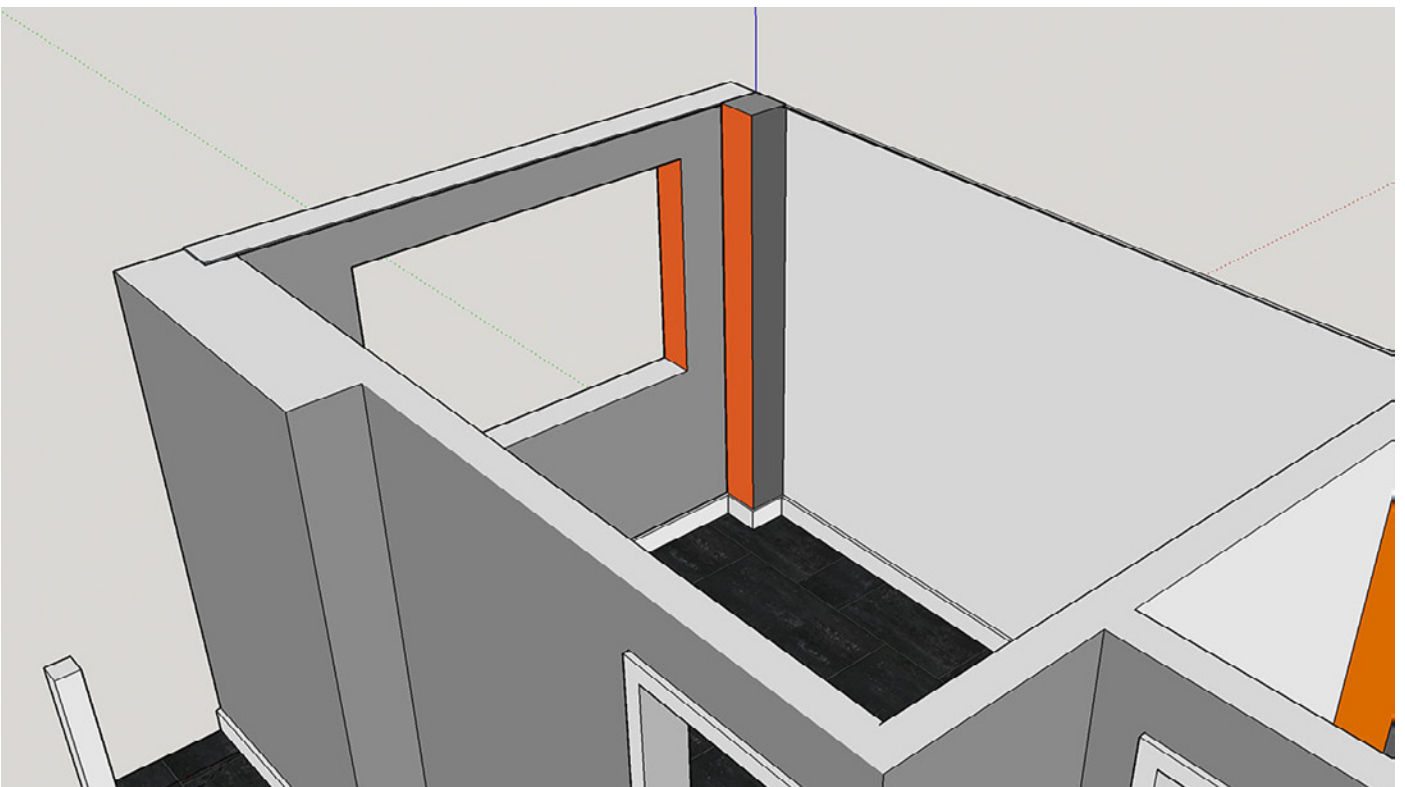
Window wall
Warm Pewter



Front Soil Stack (option)
Dark Gloss
(same as Master Bedroom bulkhead and pockets)

Reveals - Inner Window and Inner Soil Stack
Pumpkin (B&Q Colours)

http://www.diy.com/departments/colours-premium-pumpkin-silk-emulsion-paint-25/183702_BQ.ppt



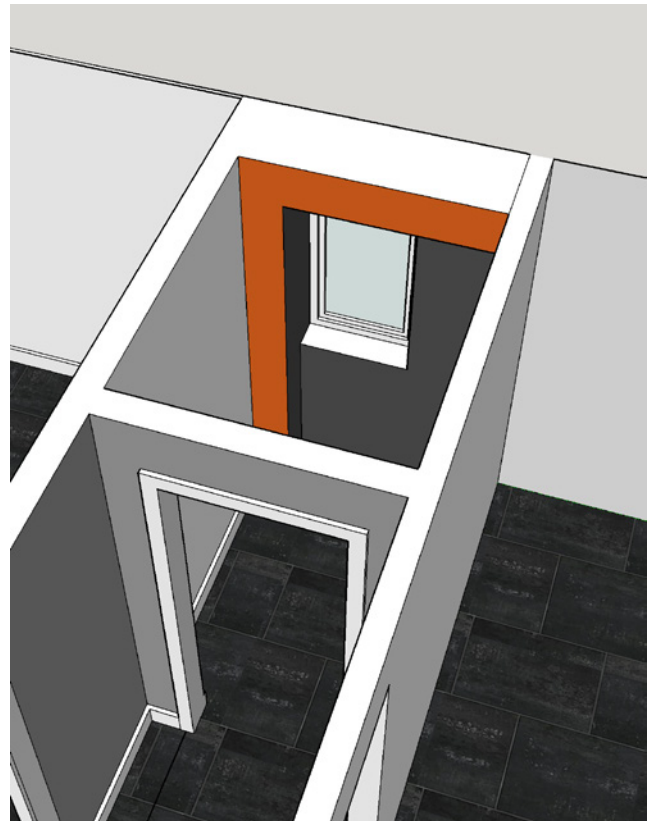
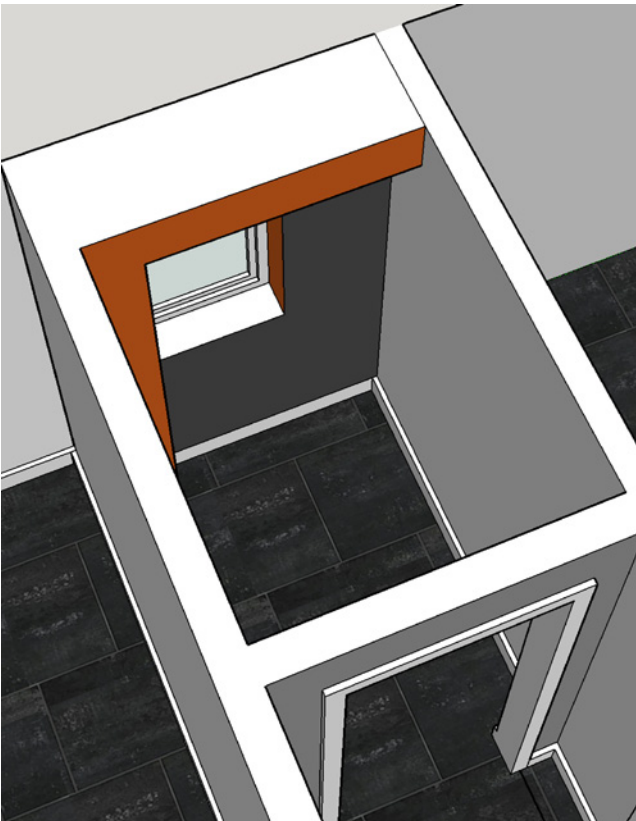
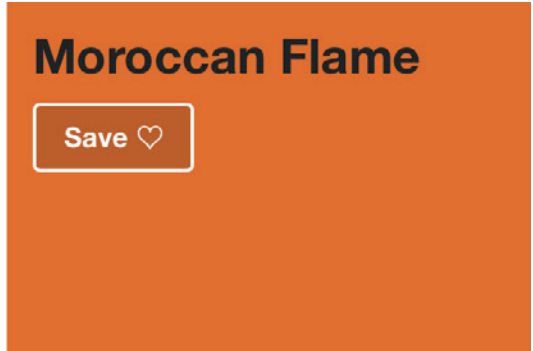
Ground Floor - Toilet

Ground Floor Toilet Window Wall (all the rest Ash Grey)



Right 'L' Shape and Inner of Left 'L' Shape
Darker Grey (TBC)
(same as Master Bedroom bulkhead and pockets but without the gloss finish)

Left 'L' Shape and Right Inner Window
Moroccan Flame (Dulux)
<https://www.dulux.co.uk/en/colour-details/moroccan-flame>



Ground Floor - Kitchen

Wall Colour (Ash Grey)



Cream Glass Wall Tile, (L)98mm (W)98mm

Product code: 5052931054404

£2.10



Home Delivery
Delivery within 14 days

Click & Collect
Order by 7pm (4pm Saturday & Sunday) for next day Click & Collect -
[Select store](#)

Qty:

[Add to basket](#)

Stocked in store
[Check stock in store](#)

45 day returns policy. Read our [returns policy](#)

[Add to wish list](#)

★ ★ ★ ★ ★ [Write a review](#)

[Product Details](#)

colours

Reveals (could use glass tiles to tie in with glass splash back TBC)

