

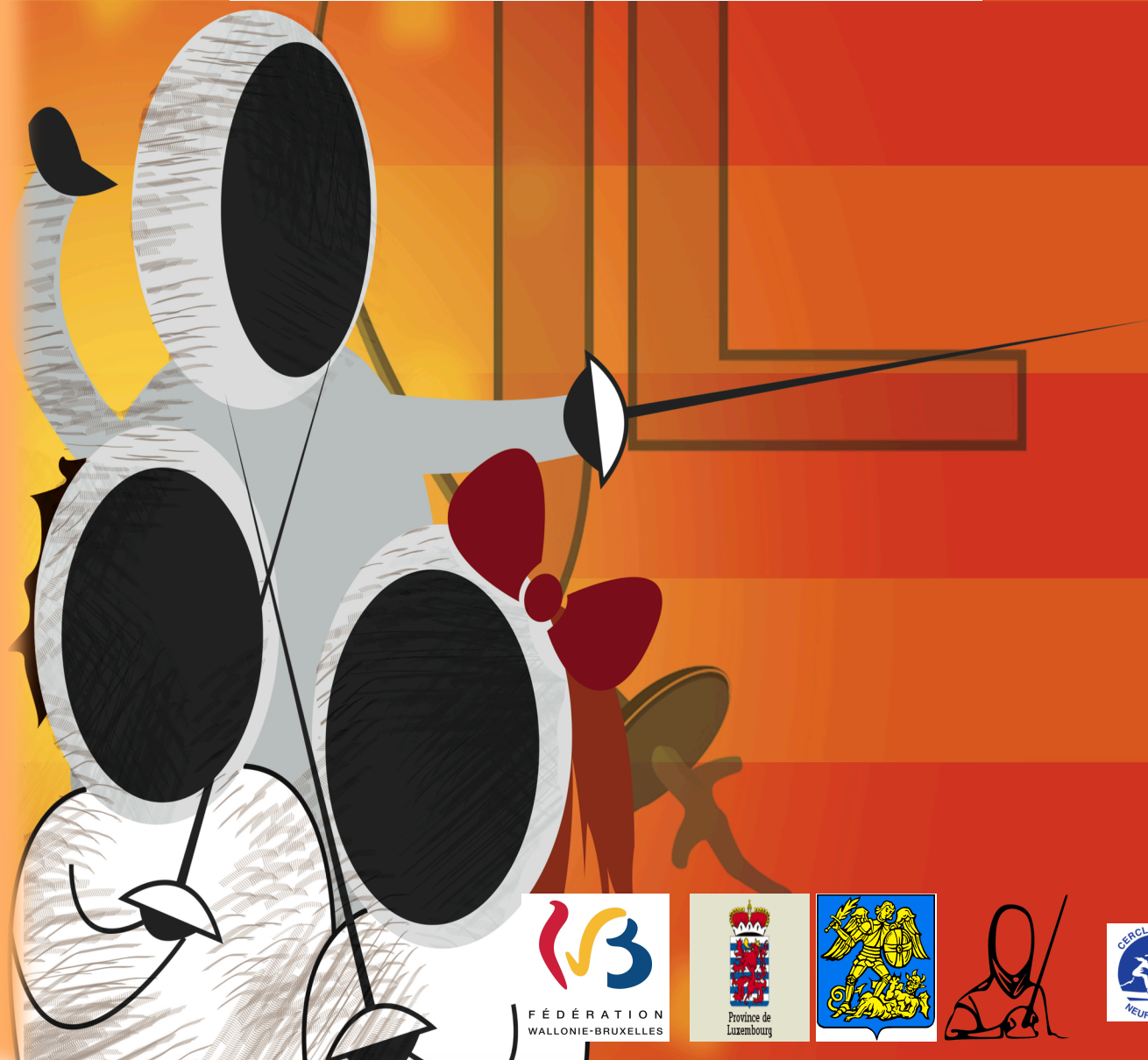
BUDDING FENCERS INTERNATIONAL TOURNAMENT

*3rd tournament out of 4 of Young Blade Circuit
(YBD 2016)*

POUSSIN, PUPILLE AND MINIME FOIL M/W
LEISURE MIXED M/W EPEE FENCING TOURNAMENT
14 old and more

SATURDAY, APRIL 16, 2016

CENTRE DU LAC ADEPS
2, RUE CHERAVOIE
6860 NEUFCHÂTEAU (BELGIQUE)
LODGING POSSIBLE AT THE CENTRE DU LAC



Program

Saturday, April 16, 2016
NO ELECTRIC BIB

BUDDING FENCERS INTERNATIONAL TOURNAMENT

CATEGORY	CHECK-IN	DISQUALIFIED	START
U12 Foil, Pupille MW (2004-2005) (3° Tournament in the YBC)	08H30	08H45	09H00
U14 Foil, Minime MW (2002-2003)	09H00	09H15	09H30
Leisure Mixed M/W Epee 14 old and+ (<i>participants max. : 20</i>)	11H30	11H45	12H00
U10 Foil, Poussin M/W (2006-2007) (3° Tournament in the YBC)	14H00	14H15	14H30

Formule

**2 ROUNDS OF POOLS, FOLLOWED BY DIRECT ELIMINATION MATCHES.
STARTING T8 ALL MATCHES WILL BE HELD.**

- . **POUSSINS M&W : POOLS : 4 TOUCHES (3 MINUTES)**
DIRECT ELIMINATION : 6 TOUCHES (2 x 2 MINUTES)
- . **PUPILLES M&W : POOLS : 4 TOUCHES (3 MINUTES)**
DIRECT ELIMINATION : 8 TOUCHES (2 x 2 MINUTES)
- . **MINIMES M&W : POOLS : 5 TOUCHES (3 MINUTES)**
DIRECT ELIMINATION : 10 TOUCHES (2 x 3 MINUTES)
- . **LEISURE EPEE MIXED : POOLS : 5 TOUCHES (3 MINUTES)**
DIRECT ELIMINATION : 15 TOUCHES (3 x 3 MINUTES)

For poussin, pupille : Separate rankings for boys and girls and by birthday date

If possible : Separate categories by birthday date

A cumulative prize for both of the days tournaments (Budding Fencers Tournament and the Leisure Epee : » **Podium to the 3 best families**



**Fencing
equipment,
sales and repairs**



REGISTRATION

REGISTRATION FEE TJP: 14 €

REGISTRATION EPEE TOURNAMENT : 8 €

Mme Valérie Laromiguière

7, chemin des Rwêches

6721 ANLIER (Belgique)

Tél. : (+32) (0)63 42 20 61

Fax. : (+32) (0)63 42 20 61

Mobile : (+32)(0)473 92 60 32 (tournament day)

Courriel : valerie.laromiguiere@gmail.com

**Registrations due at the latest by 23h59min59sec on
Wednesday, April 13, 2016**

*In accordance with other clubs that organize tournaments, we
will try to accommodate late registrations if possible, but the
registration fee will be doubled to 28€*

LOCATION

CENTRE DU LAC (ADEPS)

2, rue de Cheravoie

6840 NEUFCHÂTEAU (BELGIUM)

LODGING

**LODGING AT THE CENTRE DU LAC FRIDAY 15 AND/OR SATURDAY 16
PRICE FOR 1 NIGHT (repas du soir et petit-déjeuner sportif inclus)**

35 euros

Reservations : All requests must be received by April 5, 2016
ROOMS WILL ONLY BE AVAILABLE IF A MINIMUM OF 25 PEOPLE RESERVED !

**Reservations will be confirmed ONLY upon full payment
(payments must be received on the Club's bank account no later
than April 12, 2016**

**Full payment to be made via bank transfer to the Neufchateau Fencing Circle
bank account with your name and date of reservation : BNP Paribas Fortis :**

001-6824653-03 IBAN:BE21 0016 8246 5303 ; BIC: GEBABEBB

Photos of the ADEPS building and information about the rooms :

<http://www.adeps.be/index.asp?m=page&i=394>

Lodging at the Centre du Lac : rooms 6, 4 and 2 persons

(priority given to rooms of 6 or 4 persons.

Higher price for a single or 2 person room and according to availability.)

French speaking contact : Valérie Laromiguière - 00 32 (0) 473 92 60 32

English speaking contact : Maile Anderson - 00 32 (0)63 45 75 73

LICENSES AND REGULATIONS

- . The tournament will be conducted in accordance with FIE regulations.
- . Individual events will conform to rules, regulations and rankings according to the championship that it belongs (Circuit des Jeunes Lames / Coupe de L'Avenir). However, the organizer reserves the right to choose the most adequate procedures based on the number of participants.
- . Participants must be in possession of a club affiliation license valid for the corresponding sporting season.
- . The organizer declines all responsibility in case of accident or lost/stolen property.
- . Street shoes and high heeled shoes are forbidden on the sports hall floor. Spectators are kindly asked to leave such shoes at the entrance of the sports hall. Animals are not allowed in the sports centre.
- . *In order to assure adequate planning, the organizer reserves the right to stop registration early if maximum number of registrations has been reached. Registrations will be accepted on a first come, first served basis.*
- . *In the case of dispute, the technical direction as constituted the day of the dispute will be the only authority to make a binding decision.*

REFEREEING

1) Clubs wishing to present **4 registered fencers** for the **Budding Fencers Challenge** are asked to provide **one qualified referee** for the day to the tournament organizers or pay a fine of 100€. Starting with the 9th registered participant, the clubs will provide two referees for the day, 3 referees starting with 15 registered fencers etc. The default fine of the second missing referee is fixed at 75€ for each missing referee. In cases where the club in question has not yet made payment for the missing referees, the amount due will be payable by the participating fencers before they are allowed to participate the day of the tournament (bank account information for the Neufchateau Fencing Circle = Cercle d'escrime de Neufchâteau BNP Paribas Fortis BE 21 0016 8246 5303) or/and a bill will be sent to the club that didn't provide sufficient referees.

1bis) Self-referee for the Leisure Epee Fencing Tournament .

2) *Any referee named by his or her club at the time of registration (or after registration) must be present him or herself to the tournament organizers the day of the tournament. Except if the club un-registers its participants for Thursday, April 14, 2016 at 13/00 at the latest. Otherwise, the rules of missing referees established by the Budding Fencers will be applied.*

3) All referees must have proper recognized qualifications.

4) The referees that the participating clubs provide will be called upon at any moment throughout the day starting with the first match where one of his or her club members participate. The referee is kindly asked to not leave the tournament during the day without authorization from the tournament organizers.

In the event of a dispute, only the French language regulations (available upon request) will be considered. The rules translations in Dutch and English are non-binding and given as reference only.

« AVEC LE SOUTIEN DE
L'ADEPS – C.C.S.



« AVEC LE SOUTIEN DU SPW INFRASPORTS »

