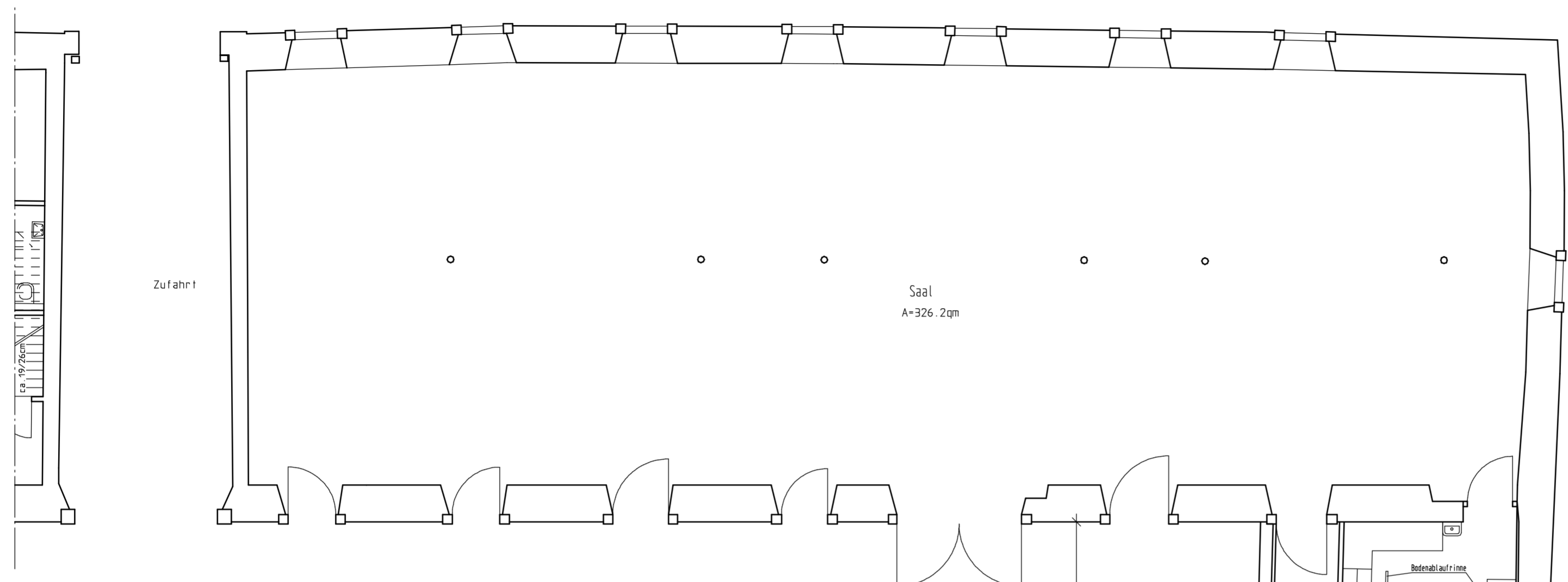


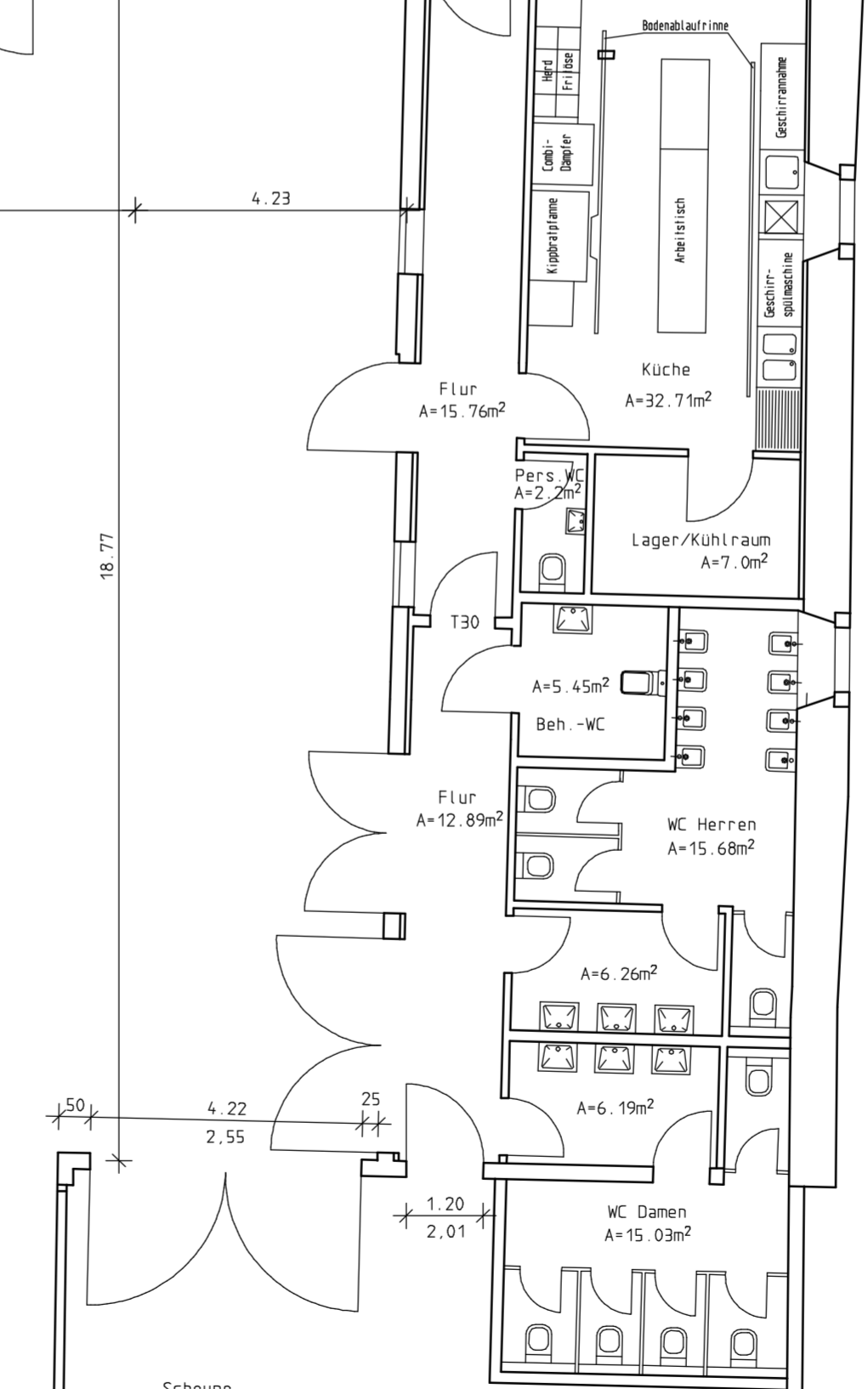
45 4.01 53 31.10 78



Zufahrt

Saal
A=326.2qm

3.48 21.14 4.23



18.77

Flur
A=15.76m²

Küche
A=32.71m²

Pers. WC
A=2.2m²

Lager/Kühlraum
A=7.0m²

A=5.45m²
Beh.-WC

Flur
A=12.89m²

WC Herren
A=15.68m²

A=6.26m²

A=6.19m²

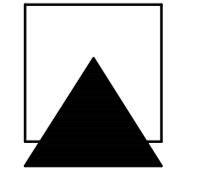
WC Damen
A=15.03m²

Scheune
siehe Plan A3n

30	1.53	11	4.20	89
8				
33	1.54	11	2.31	1.89
				80
33	1.57	12	2.28	1.87
				81
33	1.57	11	3.26	1.11
				95
				77

89
10.08
90
7.66
12
2.17
18
2.39
17
2.02
17
1.90
17
1.90
25
1.90
3.00
18
10.39
7.73
7.73
12
2.17
18
2.17
19.19
84
11.72

Rittergut Remeringhausen
Grundriss ehem. Kuhstall im Torhaus



Ingenieurbüro
Wehmeyer

Meinzer Straße 13 31675 Bückeburg
Tel. 0572/9500 0 www.bauing-wehmeyer.de