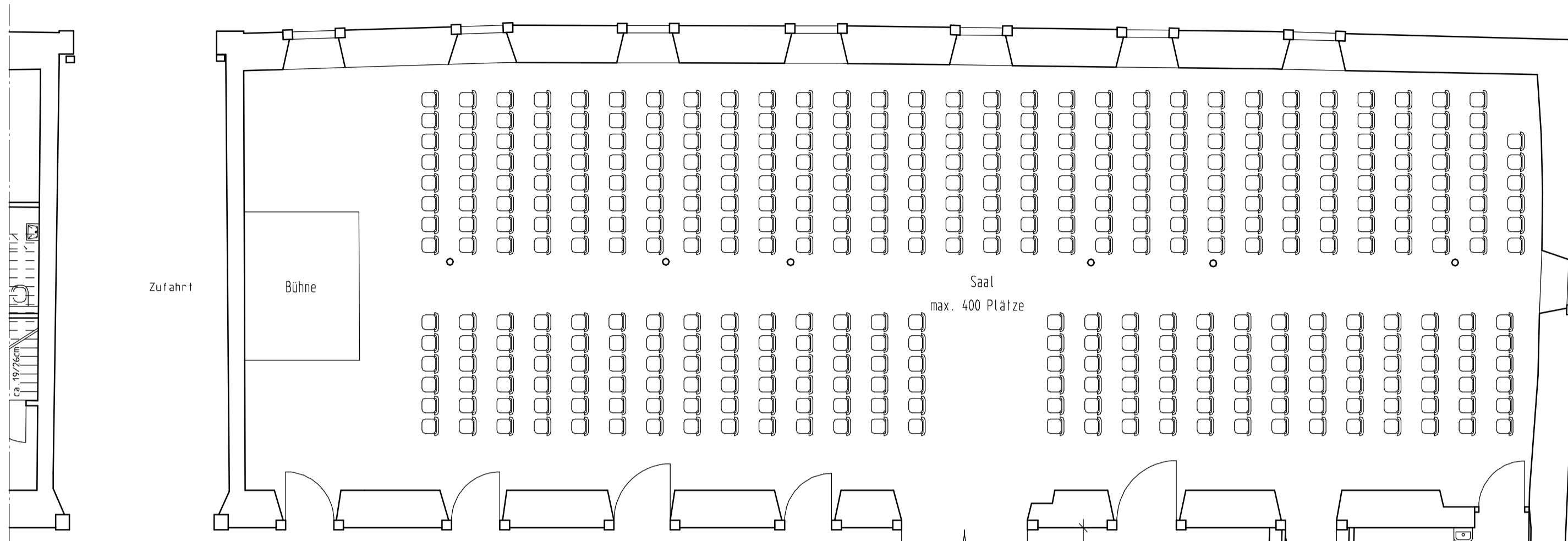


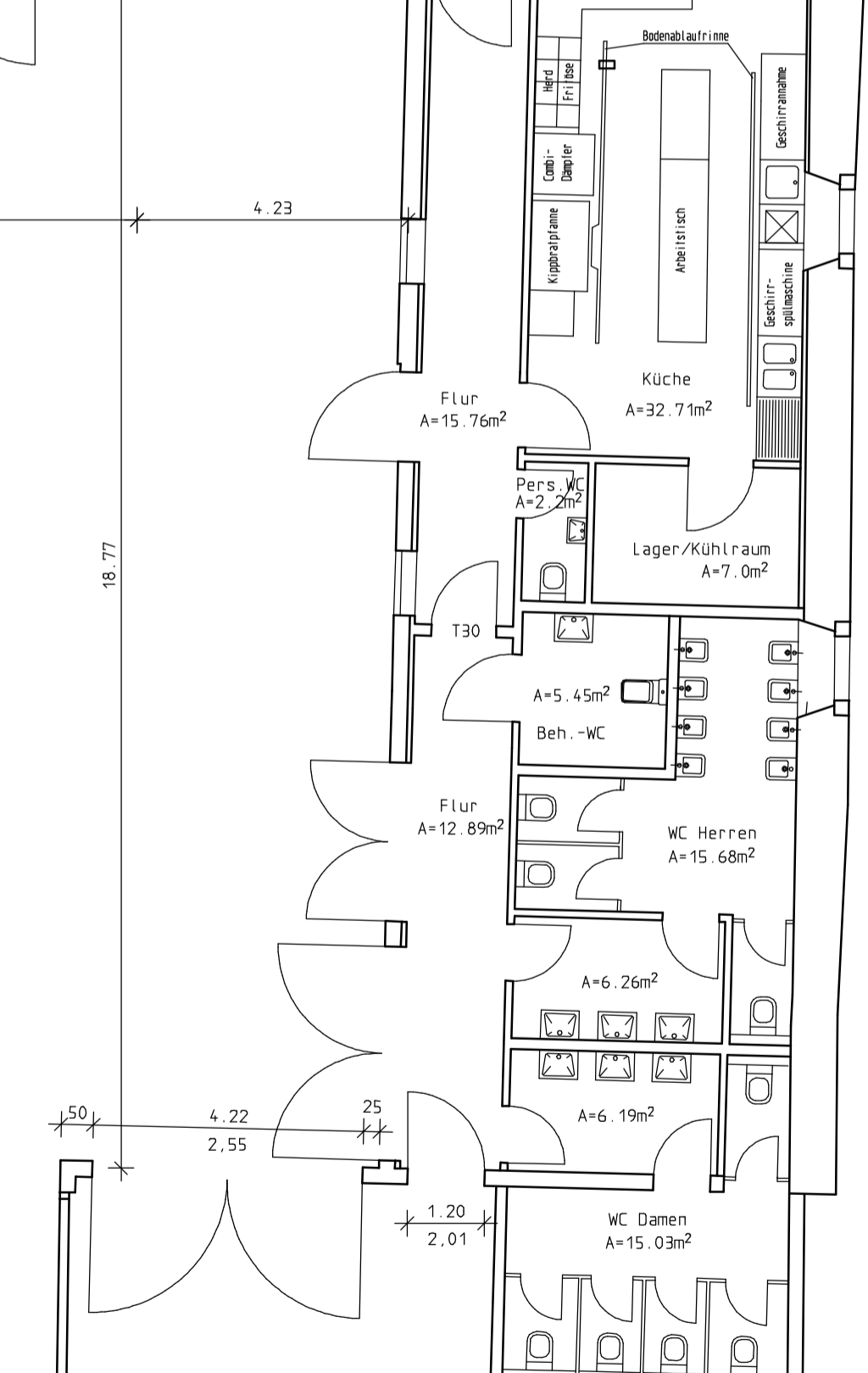
45 4.01 43 31.10 78



3.48

21.14

4.23



18.77

50

4.22

2.55

1.20

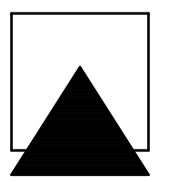
2.01

30	1.53	11	4.20	89
8				
33	1.54	11	2.31	12
				1.89
				80
33	1.57	12	2.28	17
				1.87
				81
33	1.57	11	3.26	11
				95
				77

1.34
9.64
1.34
90
7.68
12
2.17
18
2.39
17
2.02
17
1.90
17
1.90
25
3.00
18
18
7.73
2.17
12
6.65
19.19
11.72
10.39
84

Rittergut Remeringhausen

Grundriss ehem. Kuhstall im Torhaus



Ingenieurbüro
Wehmeyer

Meinser Straße 13 31675 Bückeburg
Tel. 0572/9500 0 www.bauing-wehmeyer.de