



Unique, modern and versatile.



With the restructuring of the Union-premises began what would become known as one of Frankfurt's hot spots on the Hanauer Landstrasse. Investor Ardi Goldman was one of the first in the city to realize the creative potential of Frankfurt's east end, especially the need of an urban quarter in midst of historical industrial architecture.

During the revitalization of the premises, the visionary developed the idea to establish a multi-functional event-hall in the former malt-storage of the "Dortmunder Union Brewery". An impressive and open room-concept with an extraordinary ambiance on two floors was created.

Since its opening in the year 2000, the UNION HALLE offers an optimal product-platform for all event-planers: with its sophisticated design and atmospheric light-concept it delivers an endless number of event-possibilities for creative productions of all kinds in an exciting environment.

Today, UNION HALLE belongs to the established event-locations in the Rhein-Main-Area and is furthermore known nationwide. With its capacity of 150 to 1500 guests and a total area of 1600m<sup>2</sup> it offers an ideal room layout.

Our experienced team guaranties optimal advice on location as well as professional planning and implementation of your ideas. Everything as you wish, everything from one source. We look forward to your inquiry.

Joachim Fries  
General Manager

# UNION HALLE

*Unique, modern and versatile.*



## *Gallery / Onyx Lounge (383 m<sup>2</sup>)*

The 290m<sup>2</sup> sized Gallery offers a perfect surrounding for the reception of guests or invites just to stay a while. The completely glazed Onyx Lounge (93m<sup>2</sup>) in the upper level, which can also be configured individually, is at your disposal as well.

Three fully equipped bars with cooling and tap-facilities, a separate wardrobe and a useful back-up-area complete the offer.



## *Arena (520 m<sup>2</sup>)*

The Arena is located at the lower level and forms what is the centre of the Union Halle. This beautifully designed and open area offers 520m<sup>2</sup> of optimal event-space for your ideas and event-concepts. Variable stage sizes as well as a room height of

5 to 9 meters leave ample space for the free development of your entertainment ideas. The over 12 meter long bar and proven positions for decentralized buffet-stations allow varying catering-concepts.



## *Bistro (160 m<sup>2</sup>)*

The Bistro's clear shaped floor plan stands out. Here, one can also unlock manifold utilization possibilities which can be incorporated into your event. Whether it

be a chill-out- or cigar-lounge, a coffee- or a cocktail-bar, the Bistro offers your guest a retreat without losing sight of the overall arrangement of your event.



## *Exclusive events in an extraordinary ambiance!*

Do you want to create something extraordinary? In the UNION HALLE you will find room for your ideas. The differentiated space opens up flexible utilization potentials for events from 150 to 1500 guests. Use the unique possibilities of the two levels for atmospheric and communicative events of all kinds:

- Conventions and conferences
- Product presentations
- Customer receptions
- Employee events
- Gala-dinner
- Road shows
- Company anniversary
- Fairs
- Fashion shows
- In-house exhibitions
- Talk shows
- Concerts

The representative ambiance, the professional event technology and the individual arrangement possibilities are coupled with a modern infrastructure, as well as a competent team, which advises you in all questions regarding event planning.









## Seating layout

### Arena (lower level)

Gala Dinner (round tables seating 10)	200 Persons
Gala Dinner ( long tables)	300 Persons
Parliamentary	200 Persons
Row seating	350 Persons

### Arena / Bistro / Gallery (complete hall)

Gala Dinner (round tables seating 10)	290 Persons
Gala Dinner ( long tables)	450 Persons
Standing Reception	1.000 Persons
Concert	1.100 Persons
Party	1.500 Persons

## Facilities

### ■ Freight elevator

direct access to catering area

### ■ 5 Built-in bars

including cooling cells and tap facilities

### ■ Coat racks

with coat-hangers

## Technology

### ■ Professional event technology

supplied by our exclusive provider

### ■ Multiple heavy duty attachment points

on the ceiling

### ■ W-LAN internet access in the whole hall

## Parking

- Sufficient parking space on Lindleystrasse (parallel street to Hanauer Landstr.)
- AOC car park with sufficient capacities near by (5min. walk)
- Shuttle-service can gladly be organized

## Distances

To fair grounds	4,5 km
To airport	18,0 km
To freeway	0,5 km
To central rail station	3,5 km
Next railway station	0,9 km

## Rental costs

Per event day (complete hall) 5.200,00 €

Construction-/dismantling day (complete hall) 2.200,00 €

Per event day (only Arena/Bistro) 3.500,00 €

Construction-/dismantling day (only Arena/Bistro) 1.700,00 €

All costs will be billed adding the VAT as required by law at the time of rental. Prices do not include side-costs, equipment and personel.

## Side costs

House technician	per hour	28,00 €
Final cleaning	per hour, incl. material	25,00 €
Electricity	as used per KWhr	0,40 €
Heating	as used per MWhr	40,00 €

# Facts

# UNION HALLE

*Your partner  
for event planning*

Our competent event team gladly supports you with the implementation of your event. We possess long years of experience in event management as well as a professional network of established service providers. As a full service specialist we will provide you with room, configurations, and service packages tailored to your individual needs. Talk to us, we will be pleased to prepare a non-binding proposal.

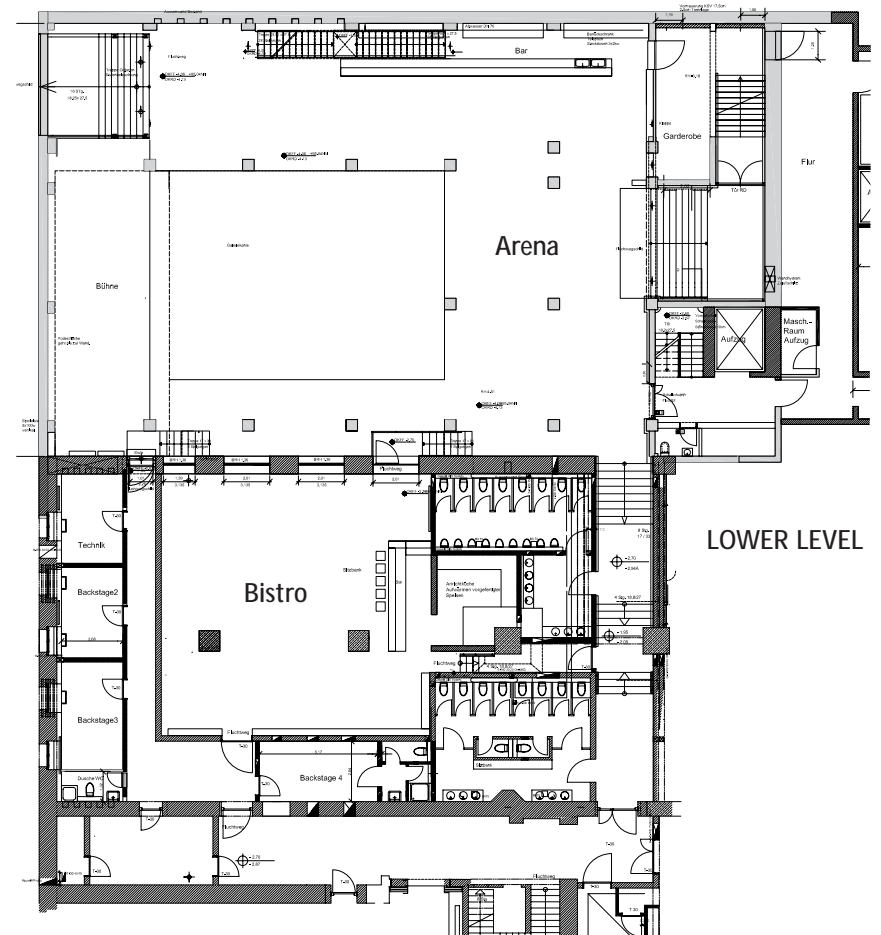
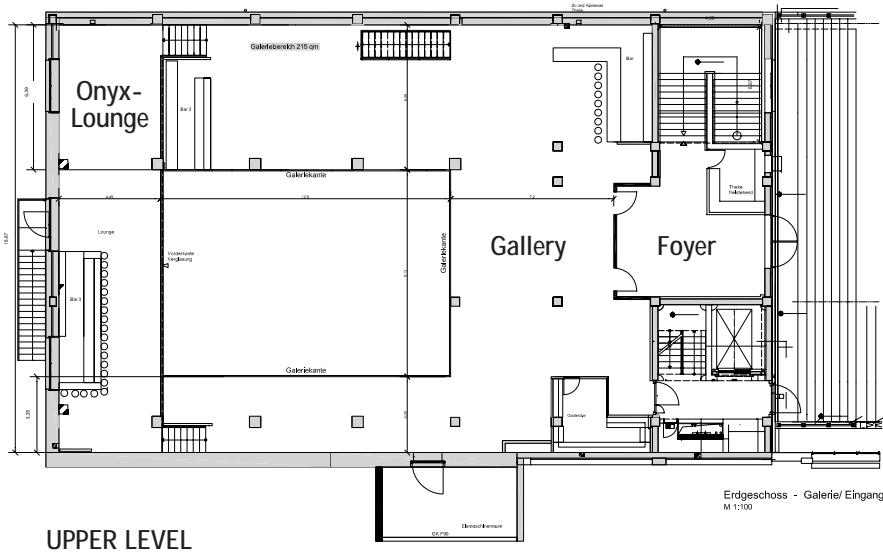
## Our services in summary:

- Planning, consultation and implementation of events, in part- or full-service
- Decoration concepts, from table decoration to complete room concepts
- Seating configurations of all kinds, from row-seating to lounge
- Selection and compilation of artist-programs, from live-band to show-act
- Audio and light technology, stage construction
- Catering
- Charming hostesses and cloak room attendants
- Event directing and dramaturgy

further services on demand



## Floor plans



## Room sizes

Foyer	42 m <sup>2</sup>
Gallery	290 m <sup>2</sup>
Onyx-Lounge	93 m <sup>2</sup>
Arena	520 m <sup>2</sup>
Bistro	160 m <sup>2</sup>

## Auxilliary rooms

- 2 Cloak rooms  
(upper and lower level)
- Separate backstage and catering room,  
including walk-in cold store
- 3 Artists' wardrobes  
with direct access to stage

*We look forward to  
hearing from you!*

Let your event in the UNION HALLE become an  
experience your guests will pleasantly remember.



#### UNION HALLE

Hanauer Landstrasse 188  
60314 Frankfurt am Main

Office / Postal address:

UNION HALLE GmbH  
Hanauer Landstrasse 184  
60314 Frankfurt am Main

Tel. 069 247 50 31-0

Fax 069 247 50 31-25

E-mail: [info@unionhalle.com](mailto:info@unionhalle.com)

Web: [www.unionhalle.com](http://www.unionhalle.com)

