



Cultueel Centrum
DE GROENE ZWAAN

Technical specification De Groene Zwaan



Statusblad

Title : Technical specification De Groene Zwaan		
Reference : Technical specification v2.3.doc		
Version : 2.3	Date : 21-01-2021	Status : Final

Versie	Datum	Reden voor de wijziging	Auteur wijziging
0.1	24-05-2019	First setup	PvH
1.0	24-05-2019	After review and pictures included	PvH
1.1	21-09-2019	Update lighting system	PvH
1.2	02-10-2019	Update lighting system and monitors	PvH
1.3	11-02-2020	Update sound and lighting system	PvH
1.4	23-02-2020	Update lighting system	PvH
2.0	08-09-2020	Update sound and lighting system	PvH
2.1	10-10-2020	Update sound system	PvH
2.2	12-01-2021	Digital audio network added	PvH
2.3	21-01-2021	Additional stage lights added	PvH

0 Content

0	Content.....	3
1	Introduction.....	4
2	Basic information.....	4
3	Main hall and stage	4
4	Audio and sound.....	4
5	Piano.....	5
6	Lights	5
7	Additional equipment.....	6
8	Pictures.....	7

1 Introduction

This document contains the technical specification for the facilities at De Groene Zwaan. It can be used by artists, technical crews and management in preparation of events and performances at the stage. This documents will be updated regularly in order to accommodate new systems or facilities.

2 Basic information

De Groene Zwaan is a former Lutheran church, build in 1788 and fully restored in 2018. It consists of three buildings, including the former vergers' house, the church and the former rectory. The former vergers' house is now in use as entrance and bar. The church is used for performances and includes a stage and a bar. The former rectory comprises of two small studios (in use as office and storageroom), a kitchen and the residence of the administrator (first and second floor).

Furthermore the building has a toilet group, including facilities for disabled persons.

Finally, behind the main church building, the facility includes a dressingroom and more storage rooms. A garden, behind the building, completes the facility.

3 Main hall and stage

The main hall measures 13 meters x 5,60 meters and has a height of 5 meters (excluding the curved ceiling) and includes a bar and a balcony. The main hall has a capacity of 85 seats (including the balcony) or 130 without seats. A flexible setup is possible.

The stage measures 4,50 meters x 2,50 meters and has a height of 0,47 meters. It comprises of building blocks which can be rearranged.

The balcony has a separate storageroom for facility's equipment and has 16 seats on a stand. The balcony can be reached from within the main hall.

4 Audio and sound

The main hall is equipped with a PA system manufactured by RCF and comprises:

- 2x RCF HDM45A tops (1100 watt RMS, 2200 watt peak);
- 2x RCF 905 AS-II subs (1100 watt RMS, 2200 watt peak);

In addition the following equipment is available:

- Midas MR18 digital mixer (16 mono input, 1 stereo input, 8 outputs), wifi/ethernet controlled;

- Behringer X32 Compact digital mixer, 32 input, 16 output, effects, option for ethernet/wifi control;
- Yamaha MG166 CX analog mixer (16 channels)
- 2 active monitors DAP 15 inch 300W RMS, 600 W Peak;
- Microphones, including 3 x wireless (2 headsets and 1 handheld), Behringer ECM8000;
- Multicable for analog remote soundcontrol;
- Audio network for digital remote control, including AES50;
- Ecler EVO4 4 channel effect mixer;
- Numark DXM06 digital 2 channel mixer;
- Turntables;
- CD players;

5 Piano

- Upright piano, brand Frankenbach;
- Tuned at 440 hz.

6 Lights

The main hall has 4 bars of lights situated above the stage, 1, 3 and 5 meters from the front of the stage.

Stage:

- 4 Showtec tri par 7;
- 4 UFO Bee Eye RGBW Beam/wash moving heads

The first bar (at 1 meter from front) comprises:

- 2 Stag headbanger RBG wash moving heads;
- 2 Showtec tri par 7 (stage)
- 2 Showtec Phantom 65 Moving heads (7 color, gobo, prism);

The second bar (at 3 meters from the front) comprises:

- 2 Briteq bt-theatre 100ec spots (stage)
- 4 Showtec tri par 7 (theater)

The third bar (at 5 meter from front) comprises:

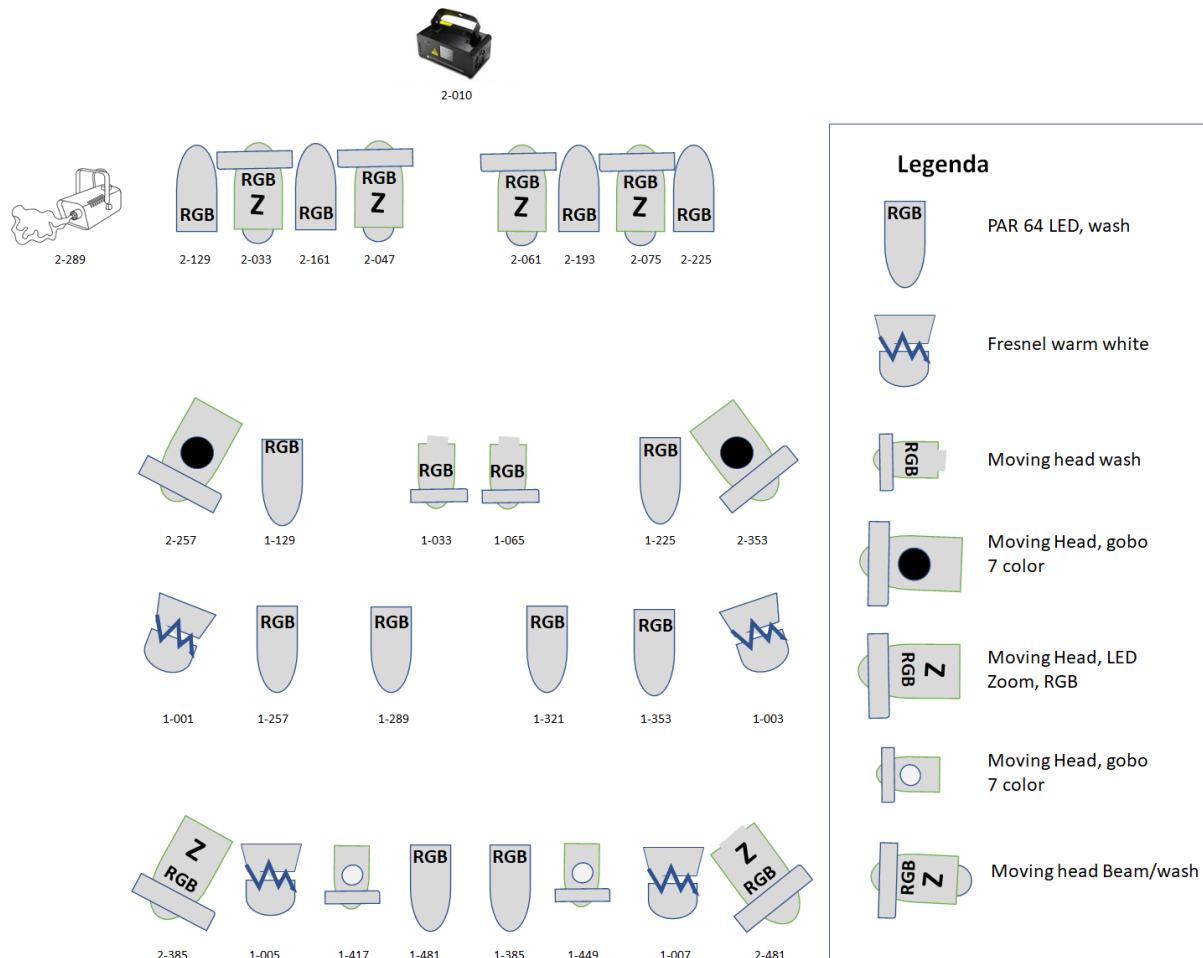
- 2 Briteq bt-theatre 100ec spots (stage)
- 2 Eurolite MHT-17 moving heads (gobo, color);
- 2 Showtec tri par 7 (Theater);
- 2 BeamZ Fuze 610z moving head (RGBW, zoom, wash, spot)

Ceiling lights:

- 4 Showtec LED PAR 56 short (fixed) at back of main hall

In addition two Showtec Compact lightsets on bars (8 led lights).

The lights are controlled from the balcony by a Lightshark LS1 console (including PC and tablet) with 2 active universes.



7 Additional equipment

The main hall is equipped with:

- Look Unique 2.1 Hazer;
- Laserworld EL230 RBG laser;
- An Optoma HD141X beamer and Pioneer DDP170 bluray player at the balcony;
- A Celexon screen at the stage (300 cm 16:9);
- Infrared and traditional CV-heating;

Technical specification De Groene Zwaan

- Forced ventilation;
- Working lights;
- Ceiling lights;
- On stage 3x 16A 5 pin 3 phase power outlets , 3x 16A CEE 3 pin outlets, 8x shuko 16A.

8 Pictures





Technical specification De Groene Zwaan



