



National Institute for Public Health
and the Environment
Ministry of Health, Welfare and Sport

Protecting workers from hazardous substances

Renske Beetstra

OSH Conference, 3 December 2022



Who am I?

- > Background in Chemical Engineering
- > Management of Safety, Health and Environment
- > Dutch Labour Inspectorate
- > National Institute of Public Health and the Environment
 - Centre for Safety of Substances and Products, focussing on workplace safety
 - Advice to Ministry of Social Affairs and Employment
 - Main topics: REACH, asbestos, OELs



What makes a substance dangerous?

- > Hazardous properties
 - Acute effects: toxicity, corrosion, STOT-SE
 - Long term effects: CMR, STOT-RE
 - Sensitization
- > Conditions (temperature, pressure)
- > Form (e.g. small particle size)



Hazardous substances/mixtures

- > Labeled products:
acids, bases, organic solvents, paints, cleaning agents ...
- > Substances that are formed in the workplace:
by-products, welding fumes, diesel exhaust,
(hard)wood dust, silica dust, ...
- > 'Natural' substances:
toxins, minerals, oils, ...
- > Medicine
- > Waste



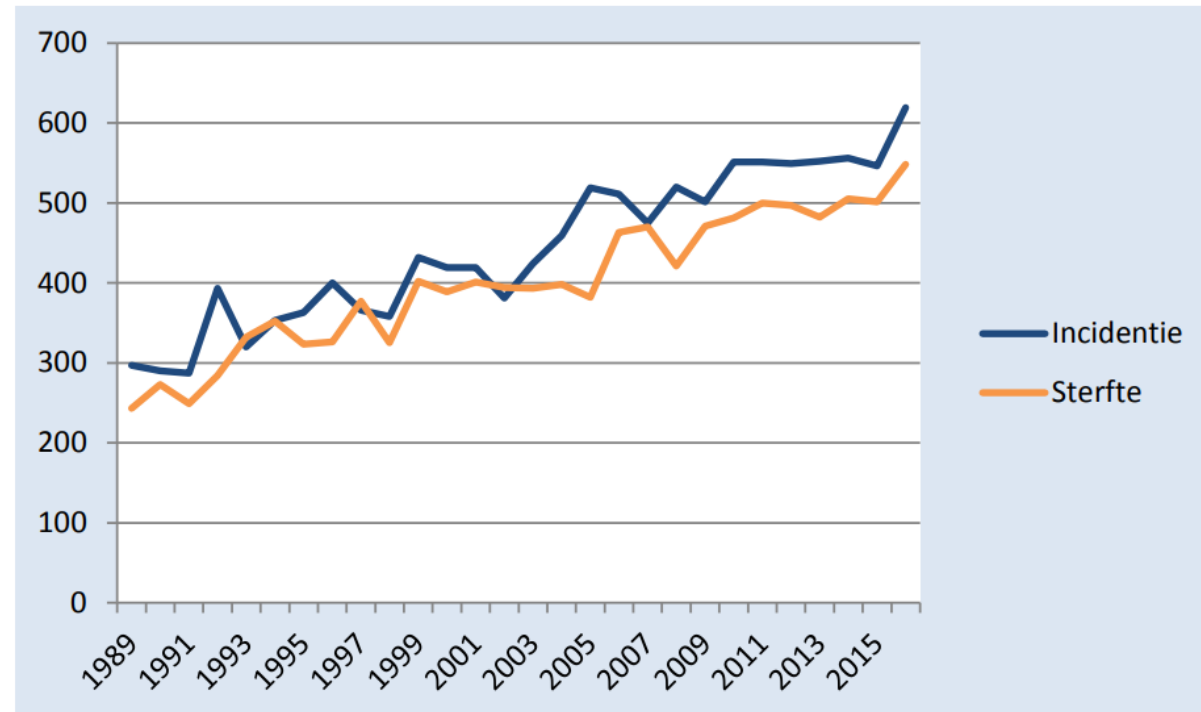


Asbestos

- > Causes mesothelioma, lung cancer and other types of cancer, asbestosis
- > Long latency diseases
- > Ban in 70 countries (NL: 1994)
- > Fibres enter deep into lungs
- > Effects known since 1960's
- > Clear link mesothelioma-asbestos

Mesothelioma in the Netherlands 1989-2016

Eysink et al RIVM Report 2017-0194





(Hard)wood dust

- › Irritation of skin, eyes, nose
- › Sensitization/allergies
- › Nasal cancer, lung cancer
- › Treated wood induces additional risks





Organic solvents

- > Dizziness, nausea
- > Skin, eye, lung irritation
- > Some have CMR effects
- > Psycho-organic syndrome

- > Ototoxicity
- > Drinking alcohol adds to effects





Information on substances

- > MSDS (from supplier)
Contains information on hazards, preventive measures, emergency measures, waste handling etc
- > International Chemical Safety Cards (ILO)
https://www.ilo.org/dyn/icsc/showcard.listCards3?p_lang=en
Contain information on hazards, prevention, emergencies, OELs
- > GESTIS substance database
<https://gestis-database.dguv.de/>
Contains information on physical/chemical properties, (eco)toxicology, health effects, safe handling, first aid, legal information



Information on substances – ECHA website

[Homepage - https://echa.europa.eu/home](https://echa.europa.eu/home)

Substance infocard (search substance from ECHA homepage)

- > Information on classification and labelling, registration and use
- > Links to more extensive information:
 - Classification & Labelling database
Harmonised classification and notifications
 - Registered substance database
Information from registration dossier, including phys/chem properties, (eco)toxicology including DNEL derivation, uses, guidance on safe use



Worker protection – 4 steps

Before starting: take basic occupational hygiene measures

1. Inventory of substances and uses
2. Exposure assessment
3. Preventive measures
4. Education and assurance

Source: Netherlands Labour Inspectorate





1. Inventory of substances and uses

- > Substances and mixtures used or in storage
- > Substances and mixtures produced or formed in the workplace

- > Hazard properties
- > Information on use: processes, locations

- > Use MSDS, information from workers



2. Exposure assessment

- › Occupational exposure limits
 - GESTIS OEL database: <https://limitvalue.ifa.dguv.de/>
- › Daily exposures and/or peak exposures
- › Inhalatory and dermal exposure (dermal often qualitatively)
- › Measurements or exposure modelling



3. Preventive measures

Hierarchy of controls - STOP principle:

- > **S**ubstitution
- > **T**echnical measures
e.g. closed system, ventilation
- > **O**rganisational measures
e.g. job rotation, procedures
- > **P**ersonal Protective Equipment
Selection of appropriate type is important





4. Education and assurance

- > Worker education (hazards, safety precautions, correct use of equipment and PPE)
- > Supervision
- > Emergency preparedness
- > Maintenance
- > Regular re-assessment





Thank you for your attention!

