



MCH Handbooks to reach vulnerable women in Peru

- Country Report -

Lourdes Herrera Cadillo MW HScPhD

Otemae University Faculty of Global Nursing

Kelly Saldaña CPsy, Erika RodriguezMD

MAMIS



Country Report Peru 2021



Population

32.13 million

Population under 15 (WHO 2016)

27.7%

Population over 60 (WHO 2016)

9.3%

Poverty rate (WB 2019)

20%

Key Country Indicators

2010 2017

Life expectancy at birth

74 77

Fertility rate 2.3 births per woman

2.5 2.3

Adolescent fertility rate x1000 women 15-19

66 56

Births attended by skilled health staff

93%

Under 5 mortality

20 14

Maternal mortality ratio (per 100,000 lb)

104 88

Infant mortality rate (per 1,000 lb)

15.5 10.3



Population Ethnicity

Indigenous	44%
Mestizo	36%
White	15%
Asian	0.16%
Afro Peruvian	3.57%

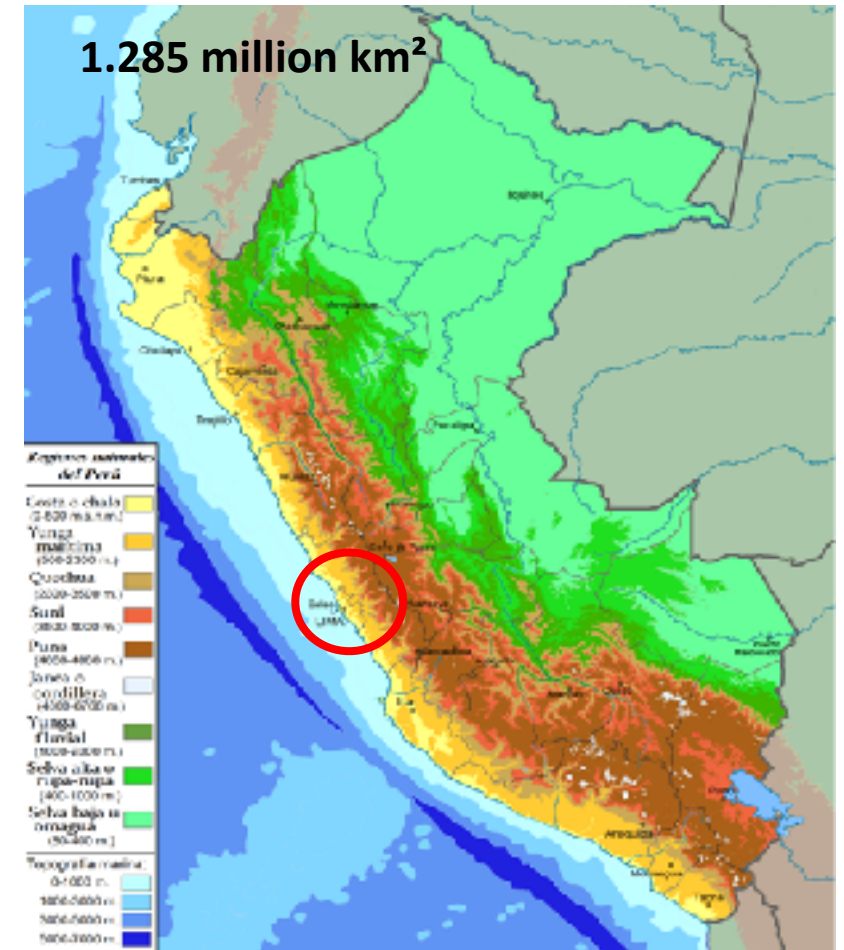


Official Language

Spanish
Quechua
Aymara
***42 other languages**



Geography



Picture Credits: Quinet (2006) 「An Amerindian woman and child in the Sacred Valley, Andes, Peru.」 CC BY 2.0

Staff Sergeant Karen L. Sanders, United States Air Force(1998) 「Al Fujimori」 ,Wikimedia Commons

Maulucioni (2019) 「Regiones Naturales del Perú」 CC BY-SA 4.0

Vulnerability in 2021



Diminished capacity of an individual or group to anticipate, cope with, resist and recover from the impact of a natural or man-made hazard.

Vulnerability is most often associated with poverty, but it can also arise when people are isolated, marginalized or underserved.

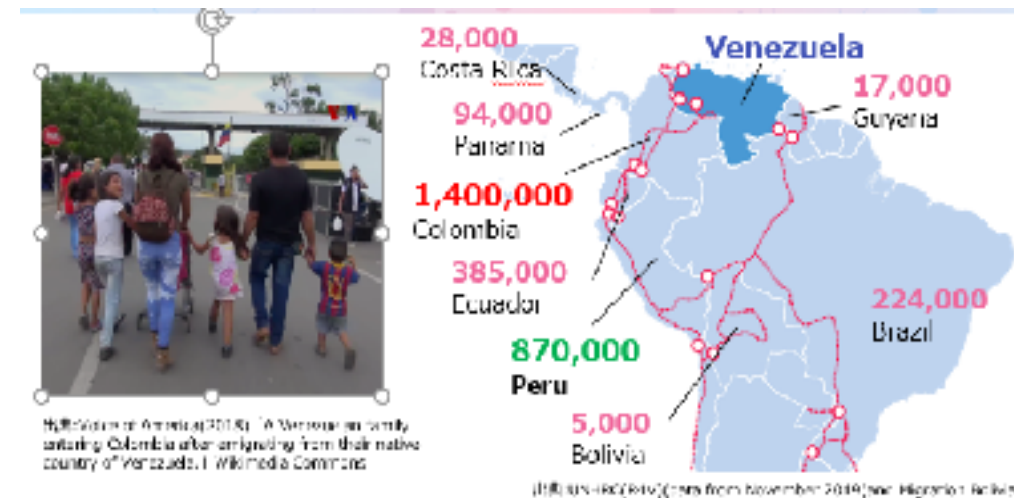
Age Gender Poverty Migration Race Disability

Geographical and cultural isolation



Amnesty International, 2009 <https://www.refworld.org/pdfid/4a55b7242.pdf>

Migration from Venezuela



Tackling Vulnerability:

Maternal waiting houses



USING LOCAL LANGUAGE



**RESPECTING TRADITION
VERTICAL BIRTH**



**MATERNAL WAITING HOUSES,
1997, PUNO**

REACHING OUT ACTIVITIES

Teenager Pregnancy & Postpartum

HOME VISITING



Working in Rural Areas

ATTENDING MIDWIVES



Violence: A Global Public Health Issue

Violence has increased by 50 percent during the sanitary emergency

- **Gender-based violence**

Lifetime Physical and/or Sexual Intimate Partner Violence :**31.2 %**

166 femicides in 2019 (28 during Covid-19 lockdown March-June)

132 femicides in 2020

16,000 Inquiries on gender-based violence in 2020 (MW 100 HOTLINE)

- **Violence against children**

Type of Violence	2017	2018	2019 (Jan-Sept)
Physical	10142	13752	12733
Psychological	13830	18911	18617
Economic	116	189	246
Sexual	6593	8957	8608
Total Cases	30681	41809	40204

Ombudsman's Office of Peru, 2019

Child marriage 21.5%



<http://documents1.worldbank.org/curated/en/765701467991927389/pdf/106417-BRI-ADD-SERIES-PUBLIC-HNP-Brief-Peru-Profile-CM.pdf>

STOP VIOLENCE

MAMIS

Módulo de Atención al Maltrato Infantil y del Adolescente en Salud

MOH Initiative against child and teenager abuse and maltreatment

Purpose: To provide specialized health care to support physical and mental **recovery** of children and teenager **victims of violence** (physical, psychological, sexual), abandonment and negligence.

Multidisciplinary team: Psychiatrists, psychologists, pediatricians, gynecologists, nurses, midwives, social workers, lawyers, based in General Hospitals and 24 hs health facilities

Tertiary Prevention

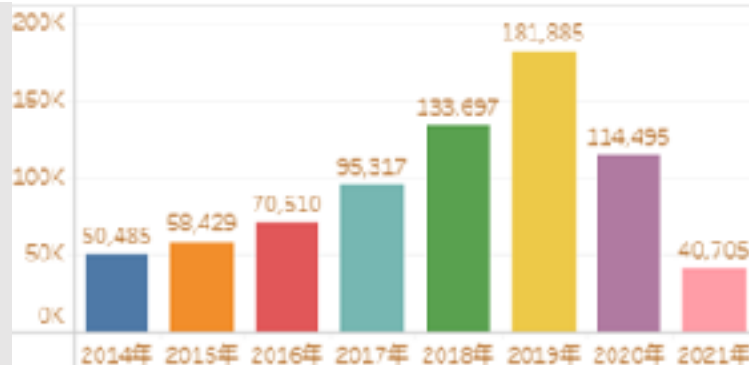


STOP VIOLENCE

PERUVIAN MINISTRY OF WOMEN AND VULNERABLE POPULATIONS INITIATIVES

1) CEM: Women's Centers

Number of
Violence
cases
reported to
the MWVP
By year



2) Urgent attention of DV, sexual violence

6,311 cases in 2020 (hotline and media)

3) Line 100 (hotline)

235,791 calls (2020)

Psychological violence 28%

Physical violence 25%

Sexual violence 6%

4) DV Perpetrator support

2698 cases (2019)

Possibilities for MCH HANDBOOK

1) Continuity of care of vulnerable populations

Teenager mothers

Geographically isolated mothers

Migrant mothers

2) High risk pregnancy and delivery

Mother and family education

3) Educational tool

Primary Prevention of Violence



The image features five hands, palms up, arranged in a circle around the central text. The hands are light-skinned and appear to be reaching towards the center. The background is a solid light orange color.

ありがとう
¡MUCHAS GRACIAS!
ございます！