



# **MCH HANDBOOK IMPLEMENTATION IN THE ERA OF COVID-19 PANDEMIC IN INDONESIA**

**dr. Erna Mulati, M.Sc, CMFM**

**Director of Family Health**

**Ministry of Health of the Republic of Indonesia**

**Jakarta, 18 February 2020**

**Maternal and Child Health Handbook Webinar Series 2021**



# Country Profile



## Geographic Condition & Population

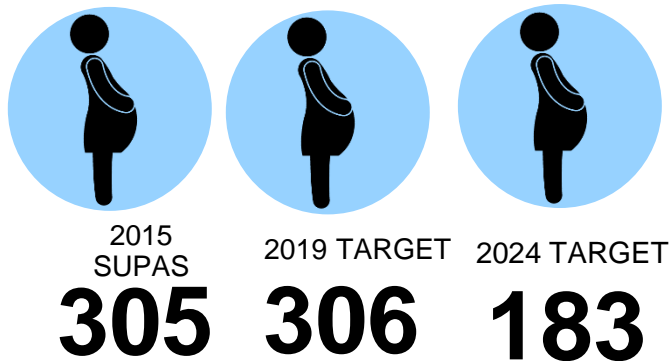
- Area: South East Asia; 2 million km<sup>2</sup> (736 000 sq. mi.); 17,508 islands; 1.128 tribes, 34 Provinces, 514 distict/municipalities (92 small Islands at the borderlines with neighboring countries; Ring of fire)
- Population: 272 million  
2021 Estimated Target:
  - 4,887,405 (1,8%) pregnancy women
  - 4,443,095 (1,6%) live births
  - 21,891,959 (8,04%) underfive children
- Health centers: 10,134
- Hospitals: 2,877



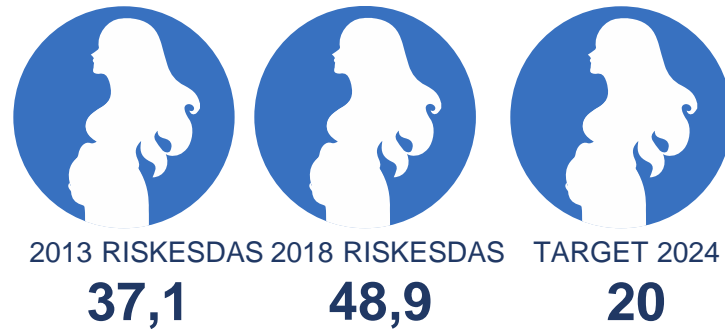
# MATERNAL & CHILD HEALTH STATUS



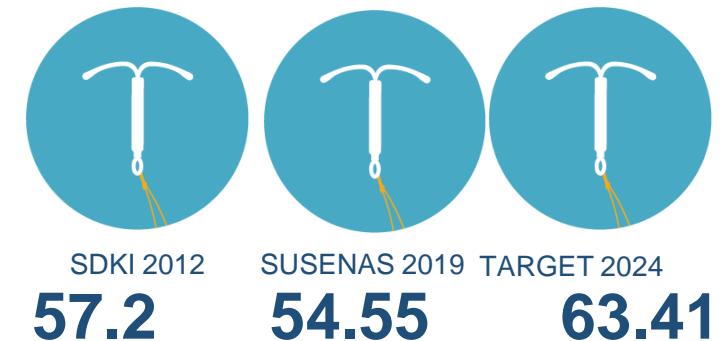
## MATERNAL MORTALITY RATE/100.000 KH



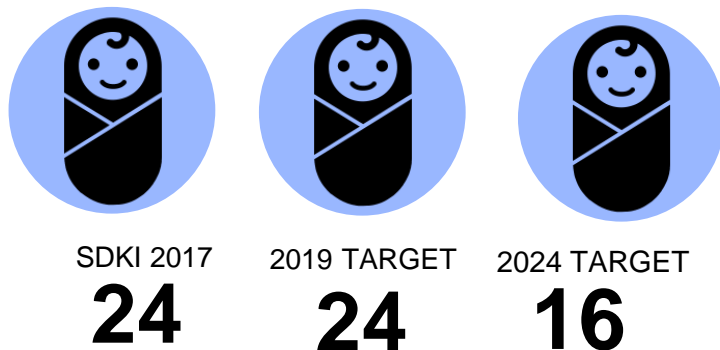
## ANAEMIA IN PREGNANCY



## MODERN CONTRACEPTIVE PREVALENCE RATE (mCPR)



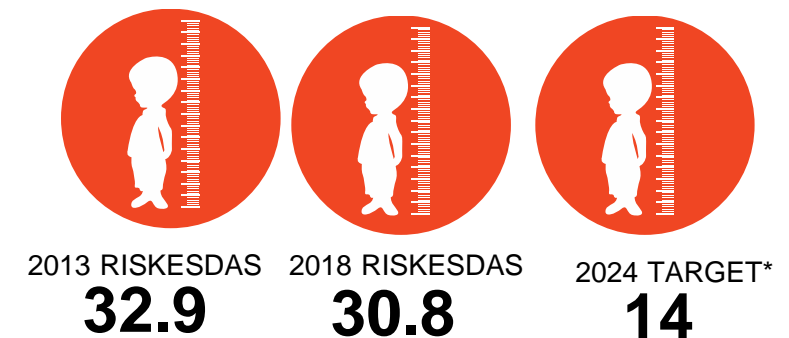
## INFANT MORTALITY RATE/1.000 KH



## PREVALENCE OF UNDERWEIGHT



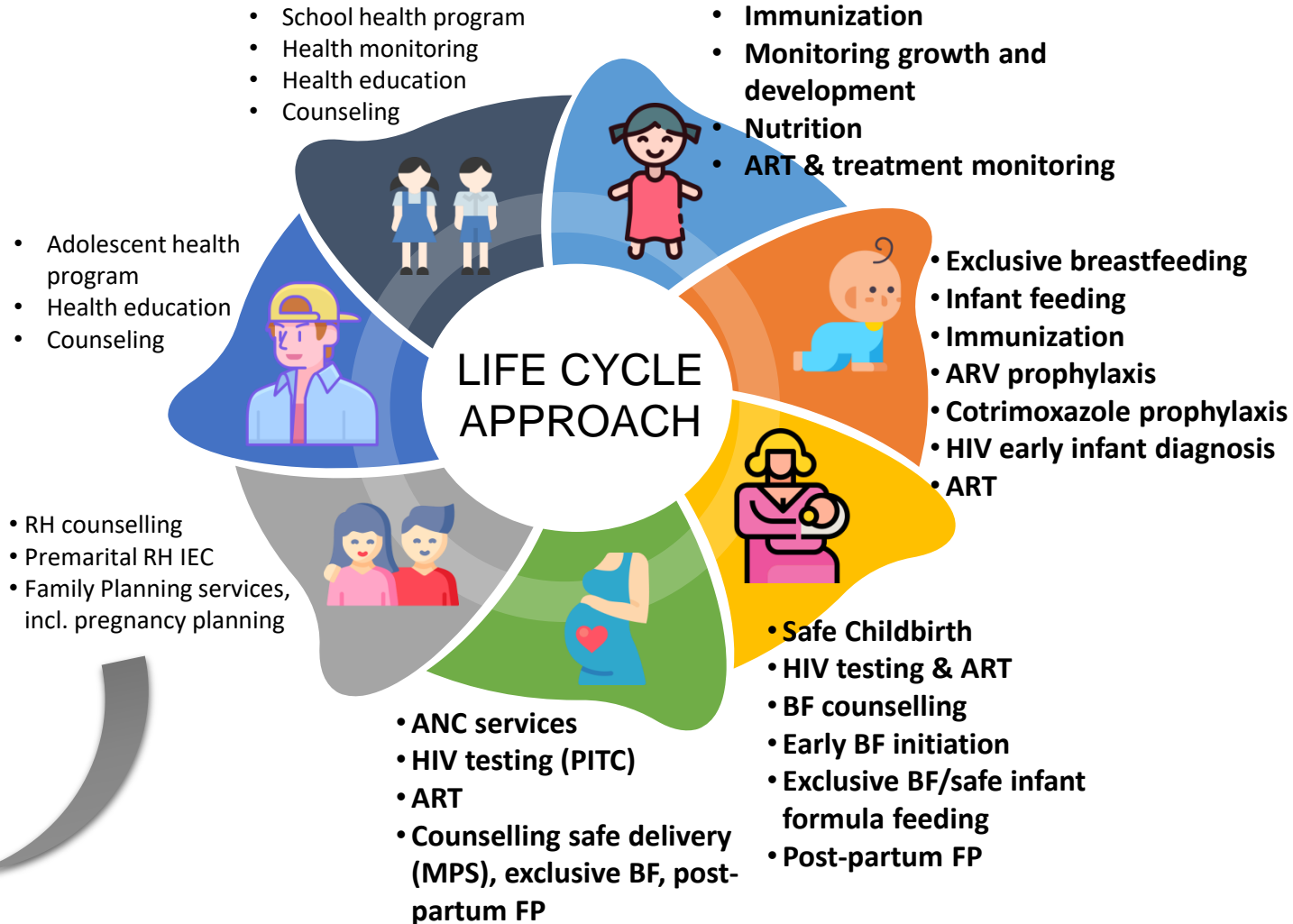
## PREVALENCE OF STUNTING



# THE POLICY OF LIFE CYCLE CONTINUUM OF CARE SERVICES



**Promotive,  
Preventive,  
Early Detection,  
Curative and  
Rehabilitative**

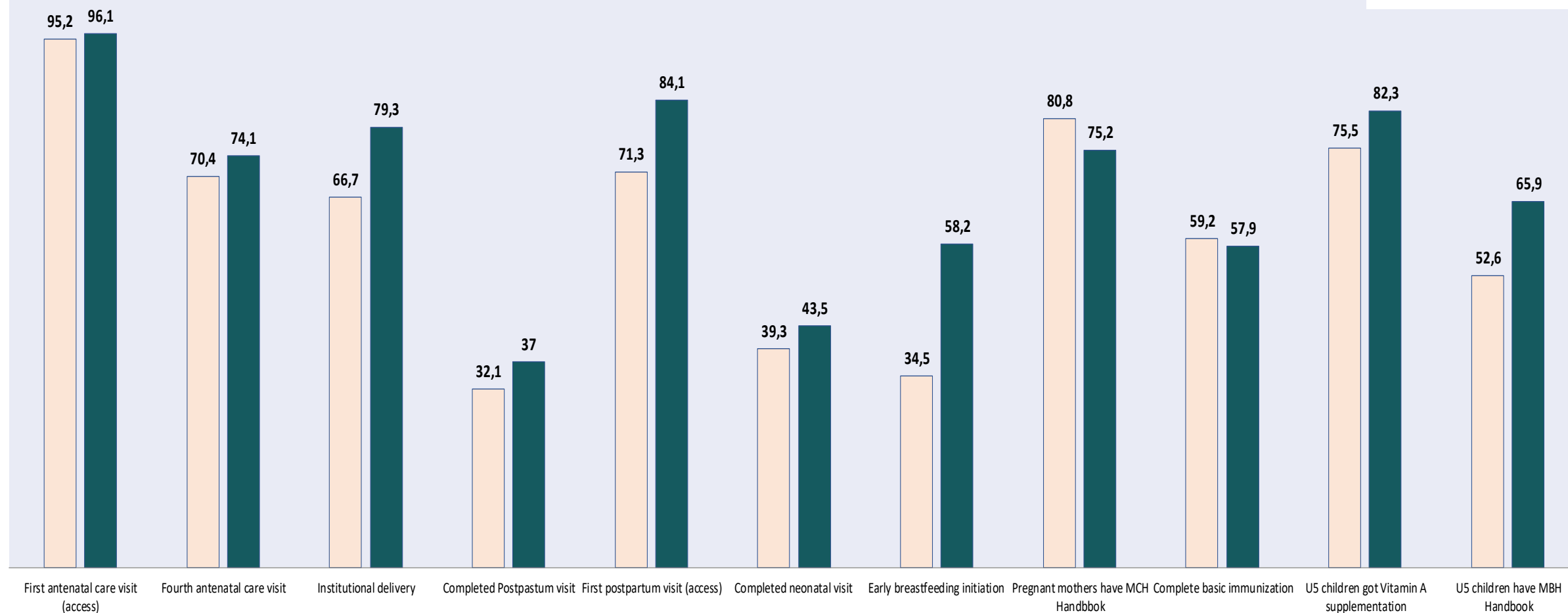


- Quality of life
- Preventing degenerative diseases





# CONTINUUM OF CARE MATERNAL AND CHILD HEALTH



Basic Health Research 2013

Basic Health Research 2018

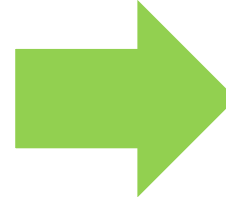


# Development of MCH Handbook in Indonesia

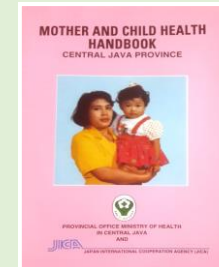


## CONTENT

- Maternal health record card
- Child health record card
- Immunization card
- Child growth monitoring card



1994



MCH HB  
Version of  
Pilot Project

1997 - 2003



Version of expanded  
to other provinces

2004 - 2006



- Ministerial Decree No. 284/2004 of MCH HB
- National version

2009



- First revised version
- The commitment of professional association & Indonesia Hospital Association
- Others records (ANC, Vit A, etc.)

2015



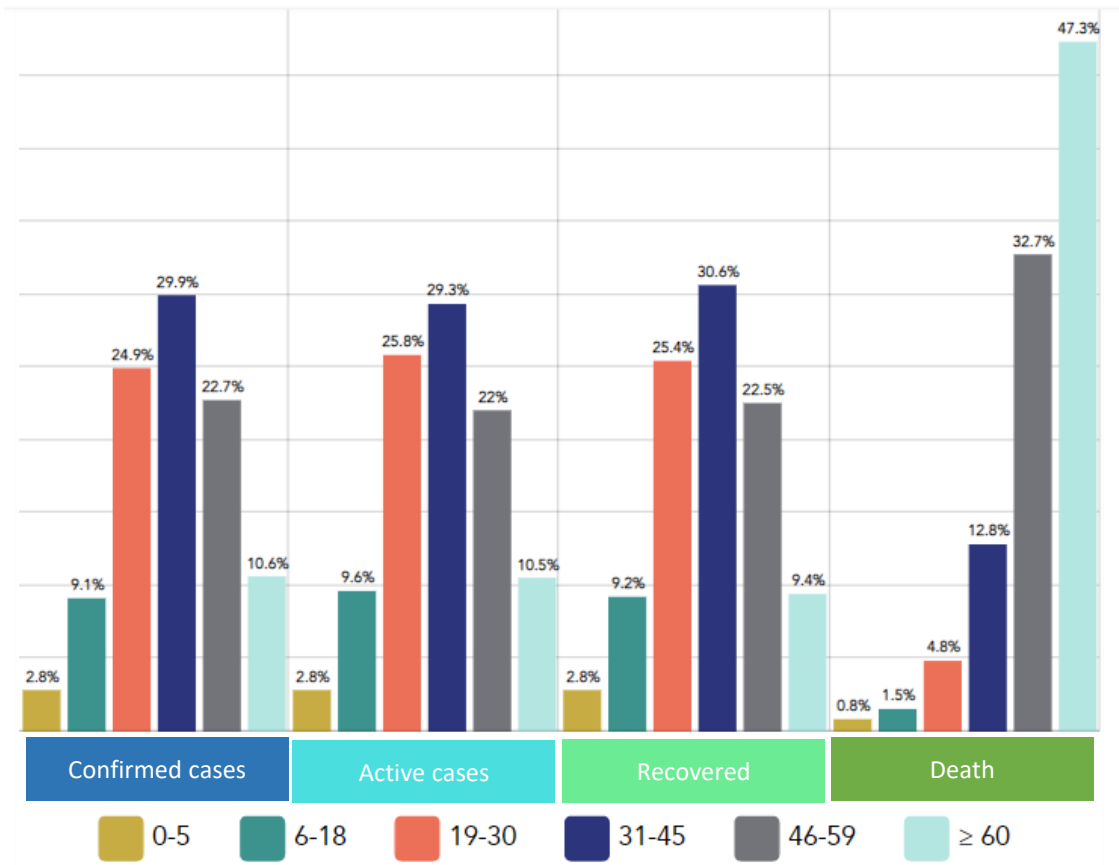
- Second revised version
- Used until the children 6 years old
- children with disability
- Protect children from violence & sexual harassment

2020

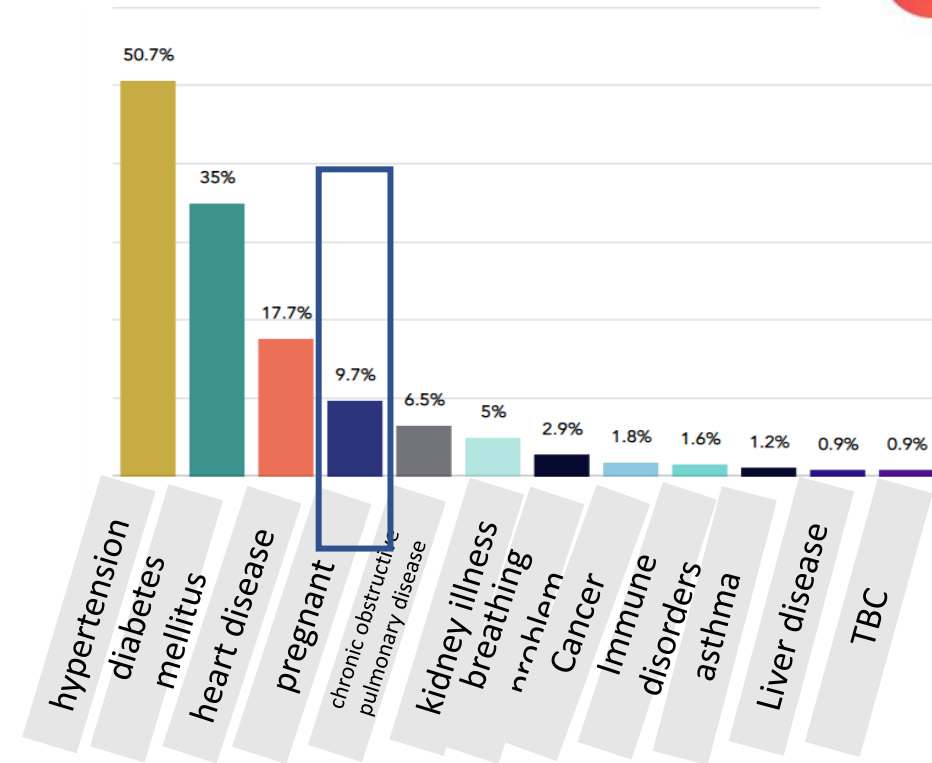


- Two covers
- The registration form then followed by Information Education and Communication pages
- Mother's statement form regarding service fulfillment
- ANC, PNC policy update
- Sequential monitoring of child development

# Situation of COVID-19 in Indonesia



<https://data.covid19.go.id> per 10 February 2021

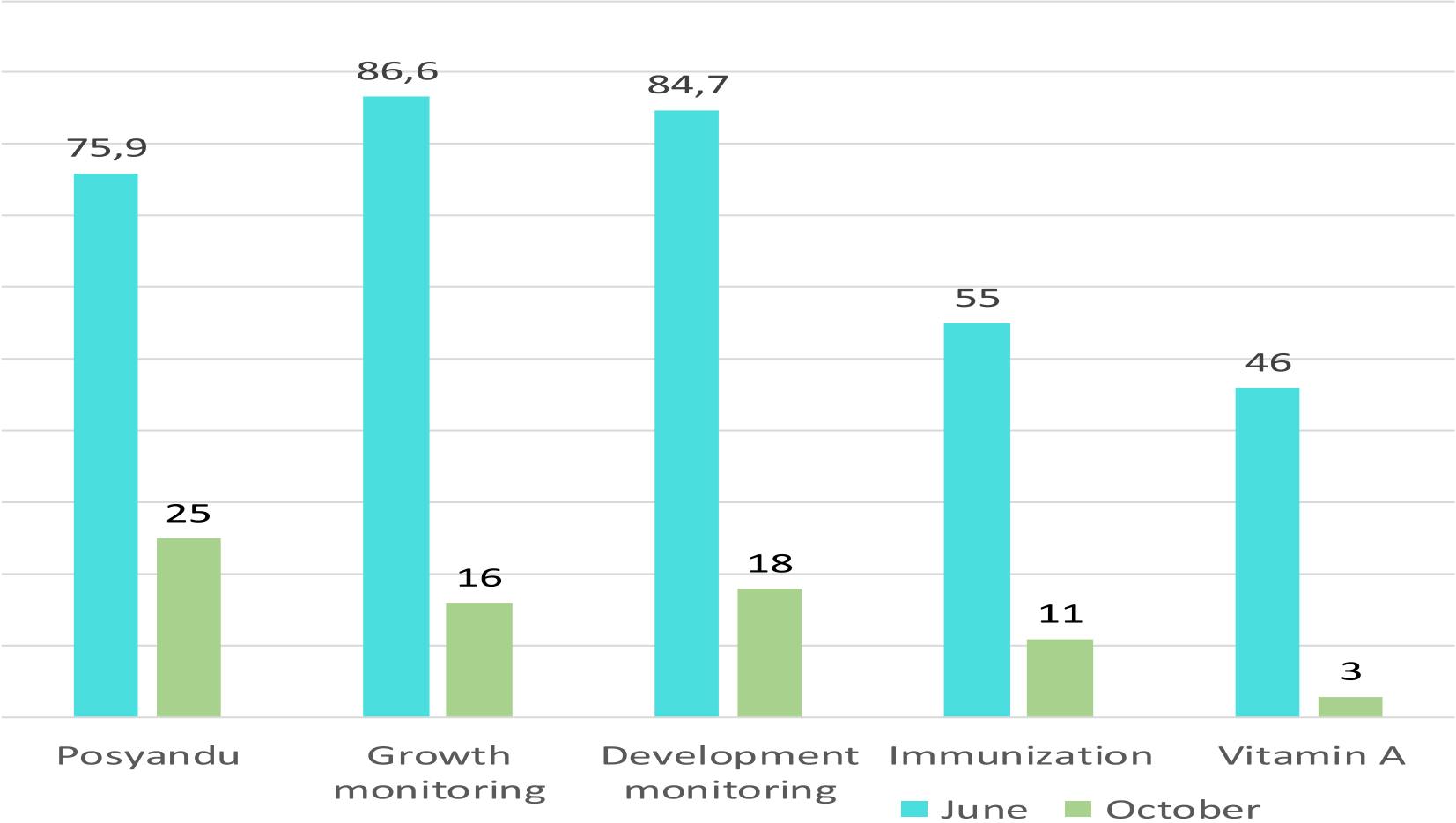


## Under-five Children



# POSYANDU SERVICES THAT WERE INTERRUPTED

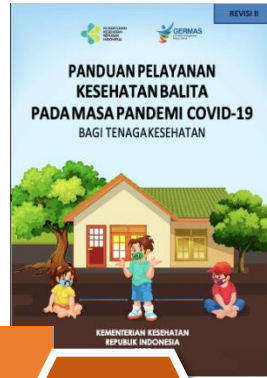
## YEAR 2020



1. Rapid Assessment, MCH During COVID-19 Pandemic, June 2020  
2. Health Need Assessment: MCH Services During COVID-19 Pandemic in Indonesia 22 October 2020



# THE ROLE OF MCH HANDBOOK IN PANDEMIC



1. RISK FACTOR SCREENING IN PREGNANCY

2. CHILDBIRTH PREPARATION

3. POST NATAL CARE

4. FAMILY PLANNING

1. NUTRITION:  
Feeding and nutrition

2. DEVELOPMENTAL STIMULATION

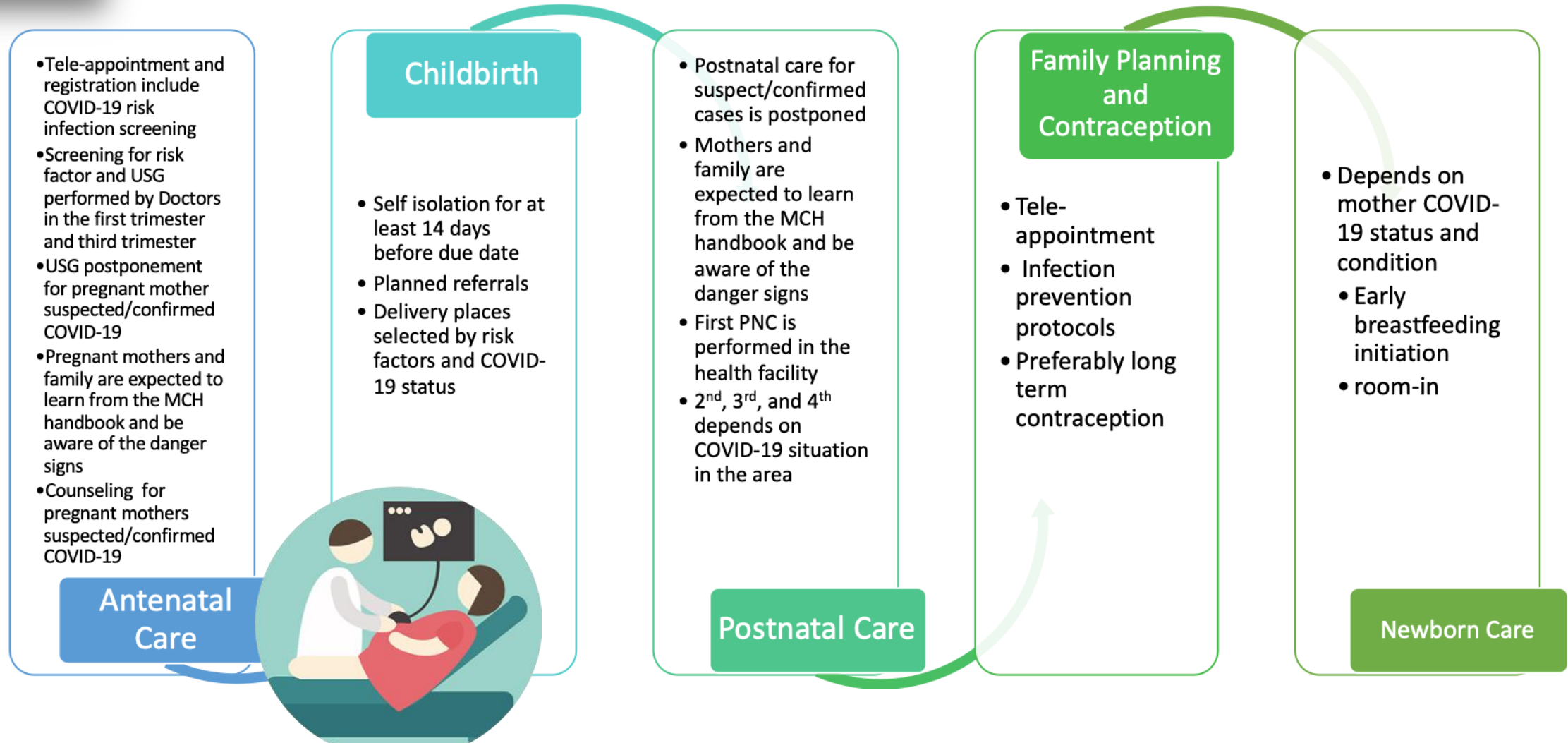
3. PROTECTION  
Immunization +  
healthy lifestyle +  
child protection

4. EVALUATION  
Growth,  
development, and  
behaviour

FAMILY ← HEALTH POST, PRIMARY HEALTH CENTERS, HOSPITALS



# MATERNAL HEALTH CARE ADAPTATION



# UNDER FIVE CHILD HEALTH CARE ADAPTATION



## Community Level

- Outreach activity depends on the COVID-19 local situation
- Prioritizing COVID-19 transmission prevention
- Family conduct growth and development monitoring using the MCH HB
- Immunization, supplementation, monitoring for high risk children by appointment in health facility

## Educational/ Social Institution

- Home based learning, healthy schedule
- New life adaptation (mask, hand washing, physical distancing)
- Screen time limitation
- Tele-parenting class
- School infrastructure readiness

## Health Facility

- Prioritizing COVID-19 transmission prevention
- PPE
- Triage
- Service area arrangement
- MCH essential services
- Tele-appointment





# MCH SERVICES IN THE HEALTH FACILITY



Teleregistration

Triage

Appropriate  
PPE

Essential  
services





# MOTHER CLASS IN THE PANDEMIC ERA



Pregnant mother class via online for redzone of COVID-19



U5 children mother class via online for redzone of COVID-19



U5 children mother class via offline for non redzone of COVID-19





Thankyou





# THE IMPLEMENTATION OF MCH HANDBOOK



Antenatal Care



Delivery and newborn care



Immunization



Referral Health Care



BEONC  
CEONC



MOTHER'S CLASS

Community



INTEGRATED HEALTH POST

Integrated health Post : 173.750  
Mother Clas: 9.456

Primary Health Care



PUBLIC HEALTH CENTRE

Community Health Center : 9993  
Pratama Clinic : 7917  
Widwives Practise : 40000  
GP Practice : 8878

National Referral Hospital : 14  
Province Referral Hospital : 20  
Regional Hospital : 110  
District Hospital : 619  
Private Hospital : 1787







# THE IMPLEMENTATION OF MCH HANDBOOK



Inter-professional  
utilization



Cross-sectoral utilization



Digitalization development

