

T
E
C
H
N
I
C
A
L
P
O
R
T
F
O
L
I
O


UTOPIA


3RD PROJECT - DRAPING
PATRICIA BURGAYA

Material-list

Fabrics


1. Tencel
28% POLYESTER
72% MODAL


1a. 

1b. 


1c. 

2. Satin
100% POLYESTER


2a. 


2b. 

3. Wool
100% WOOL


3. 


4. Crepe cotton
100% COTTON

4a. 


4b. 

5. Crepe chiffon
w. vilene
100% POLYESTER


5a. 

5b. 

6. Cotton
100 % COTTON

6. 

7. Drill
100 % COTTON

7. 

8. Tulle
100 % POLYESTER

Material-list

Hardware

K. Loose feathers

K1.

K2.

K3.

L. Featherband

L1.

L2.



M. Knit



N. Fringeband

Material-list

Hardware

A. Invisibile zipper

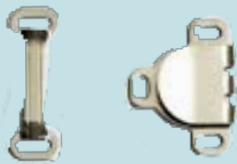
A1.



A2.



B. Pant hook



C. Zipper



D. Button



E. Hook & eye tape



F. Hook & eye



G. Tinsel



H. Metal spiral boning

7mm



I. Boningstopper

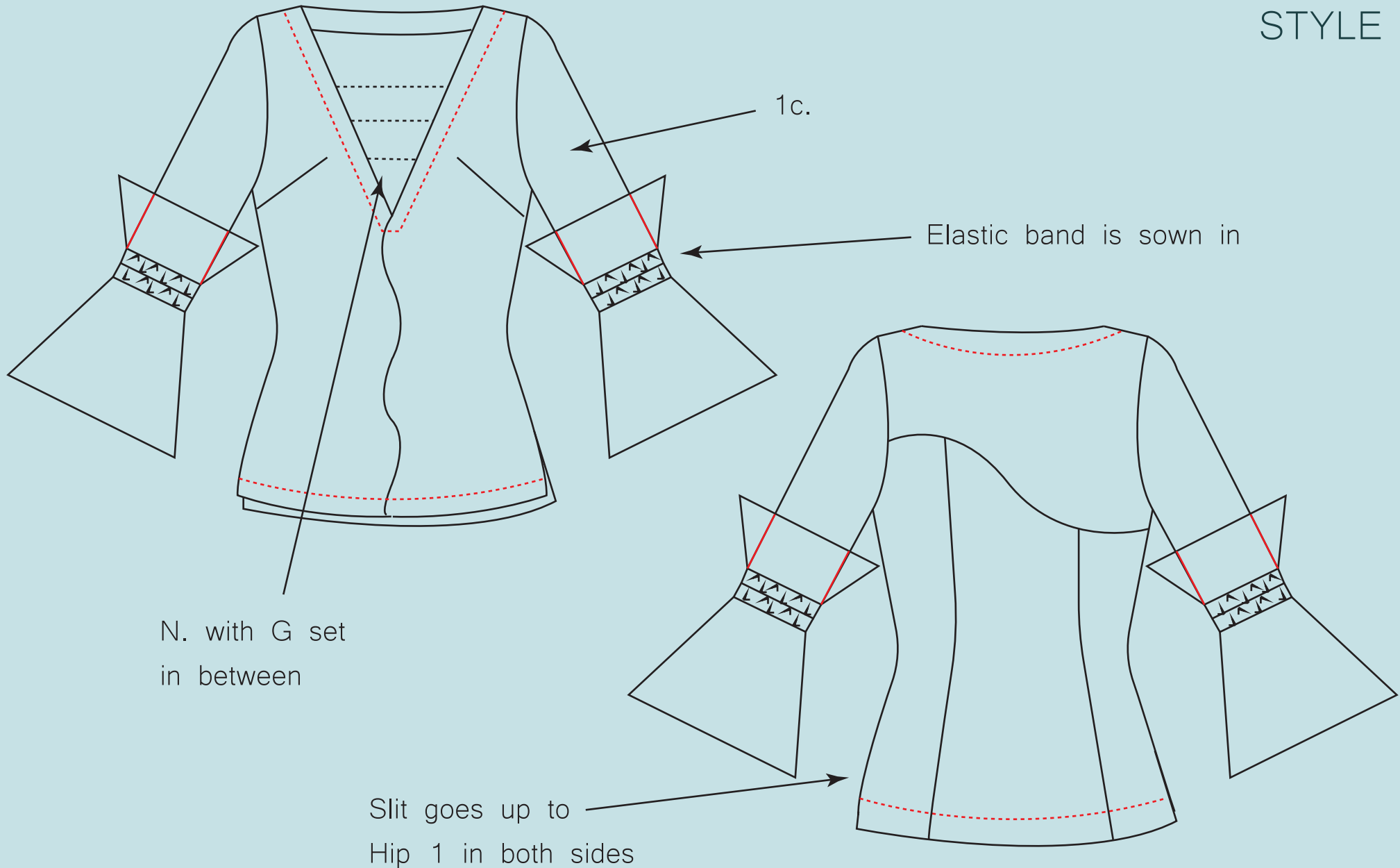


J. Boningcasing

9mm/1cm

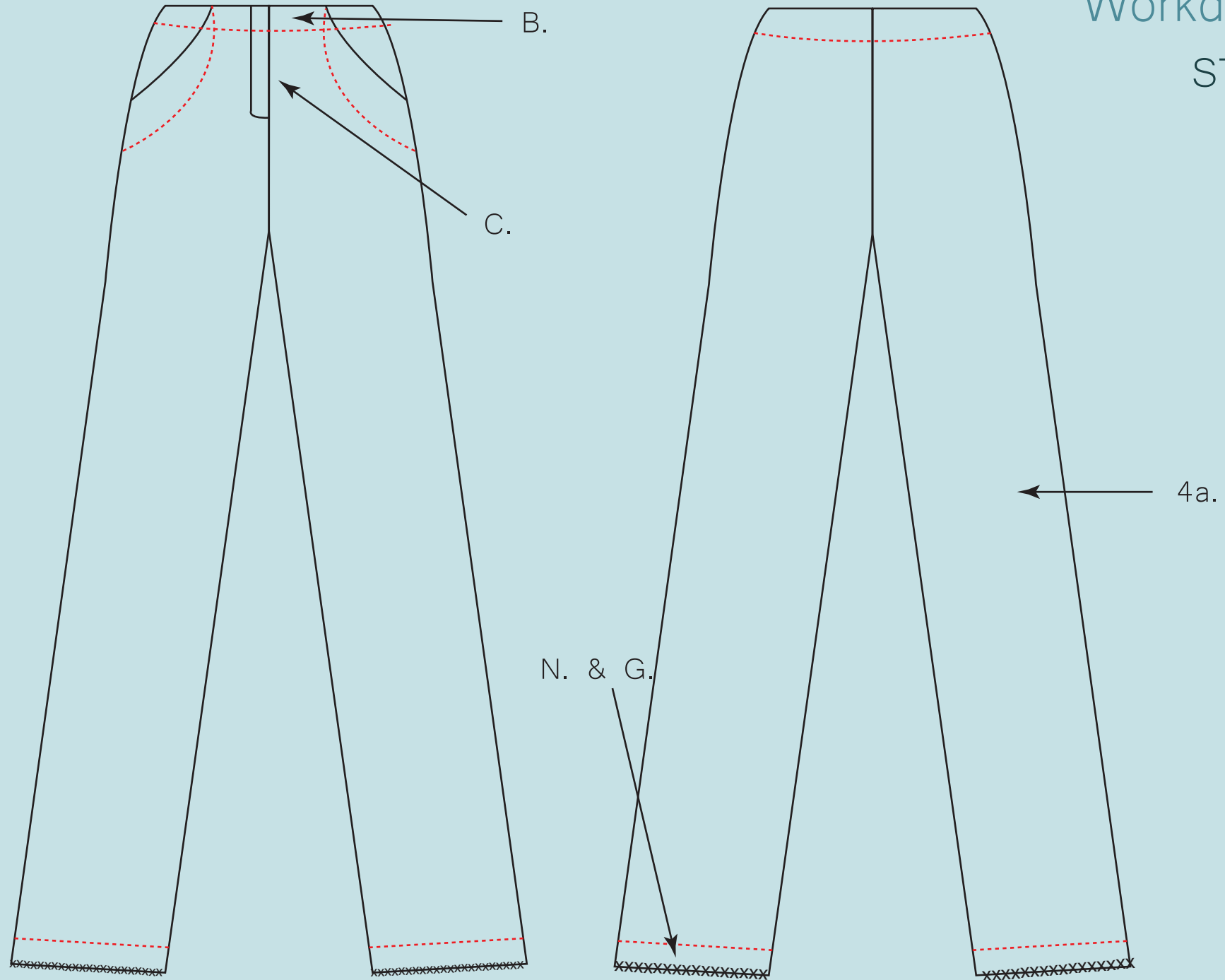
Workdrawing

STYLE 1



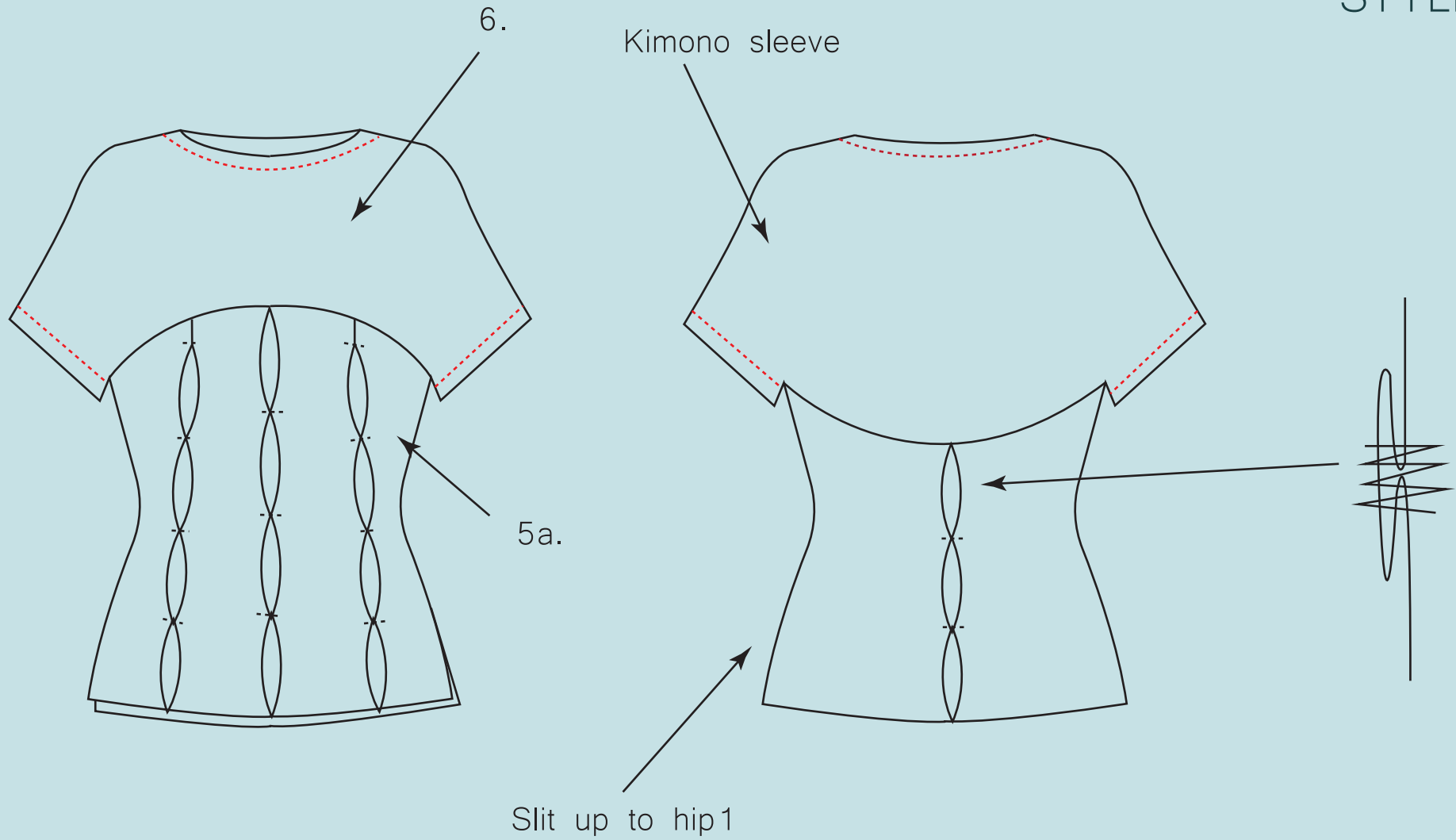
Workdrawing

STYLE 2



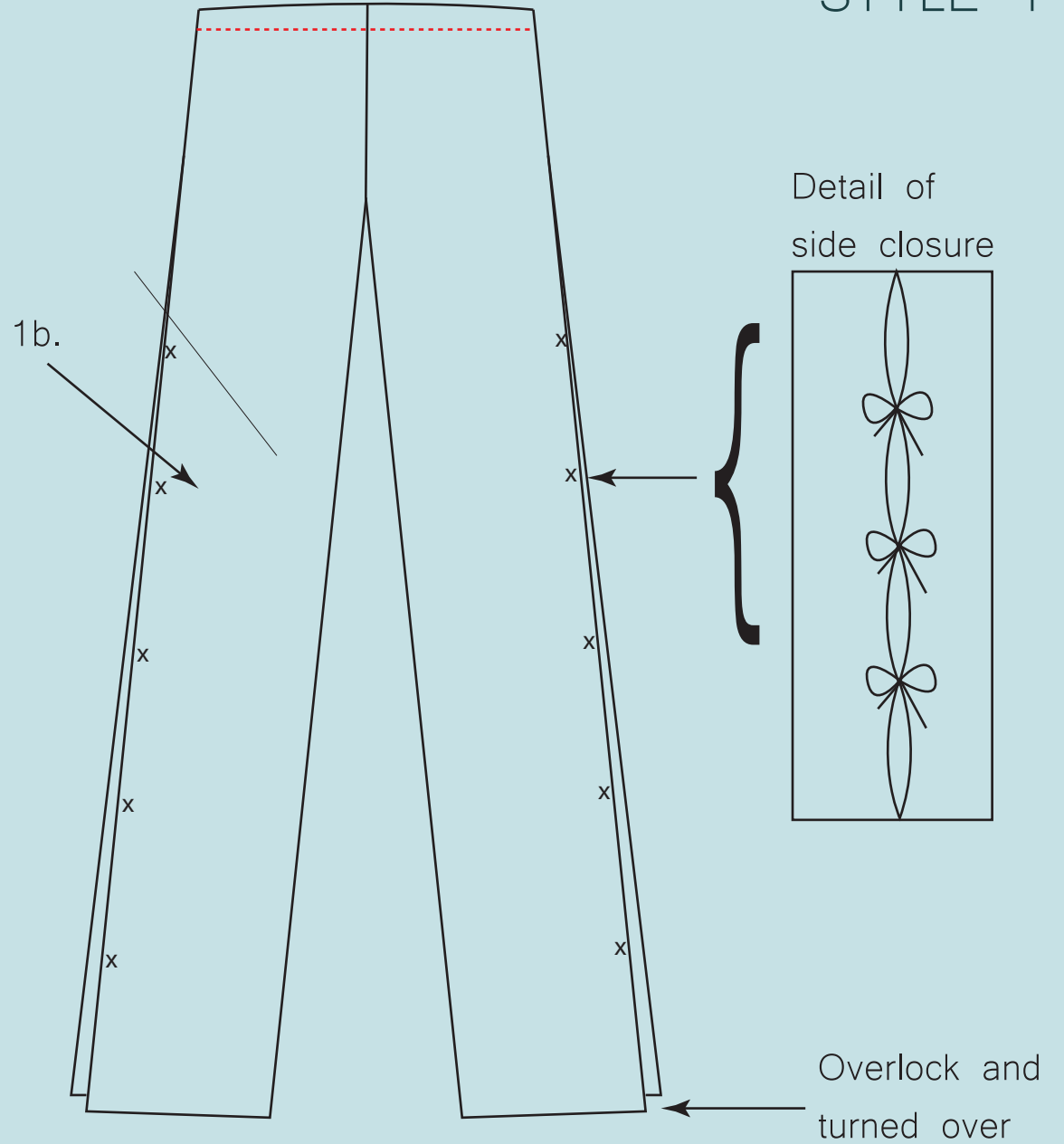
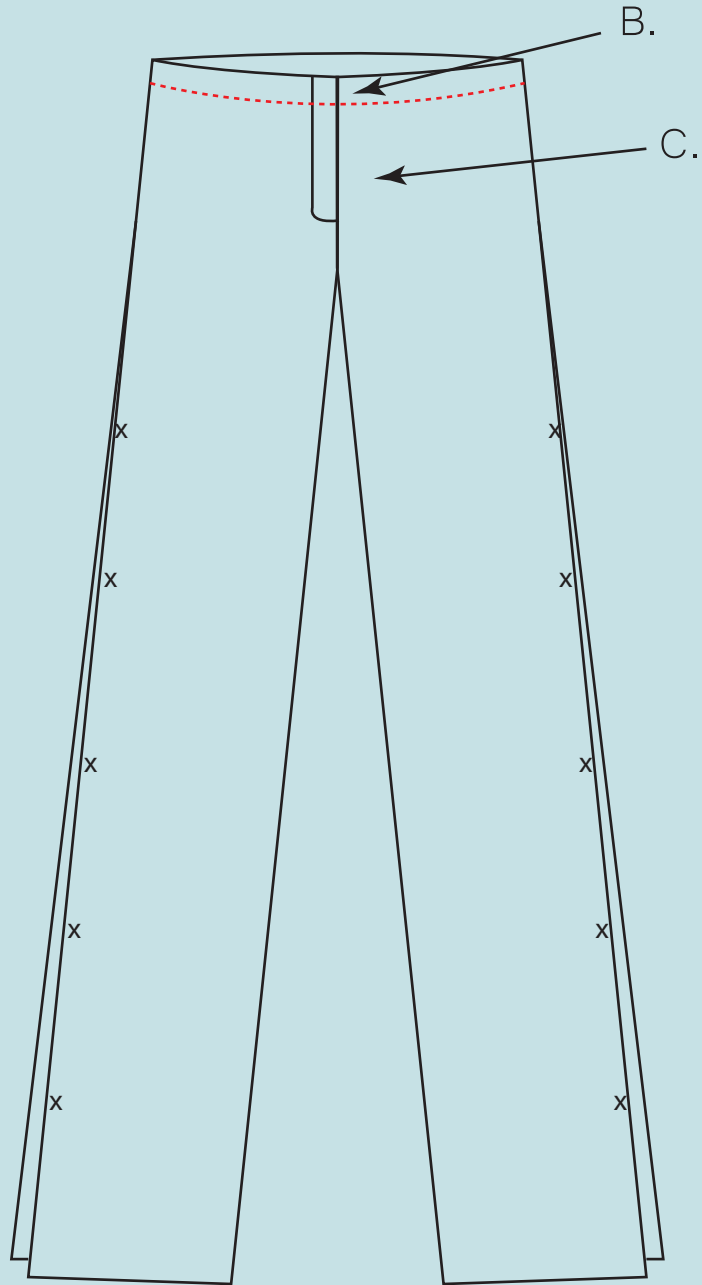
Workdrawing

STYLE 3



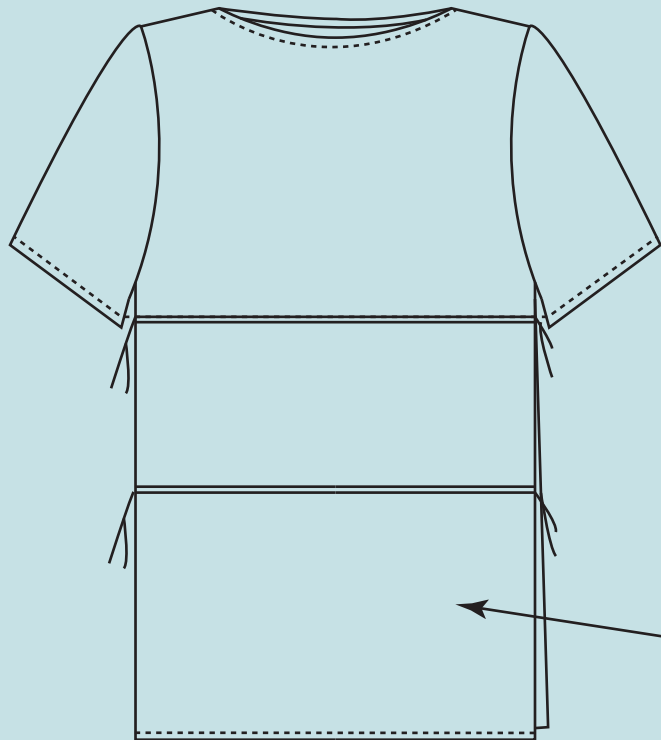
Workdrawing

STYLE 4

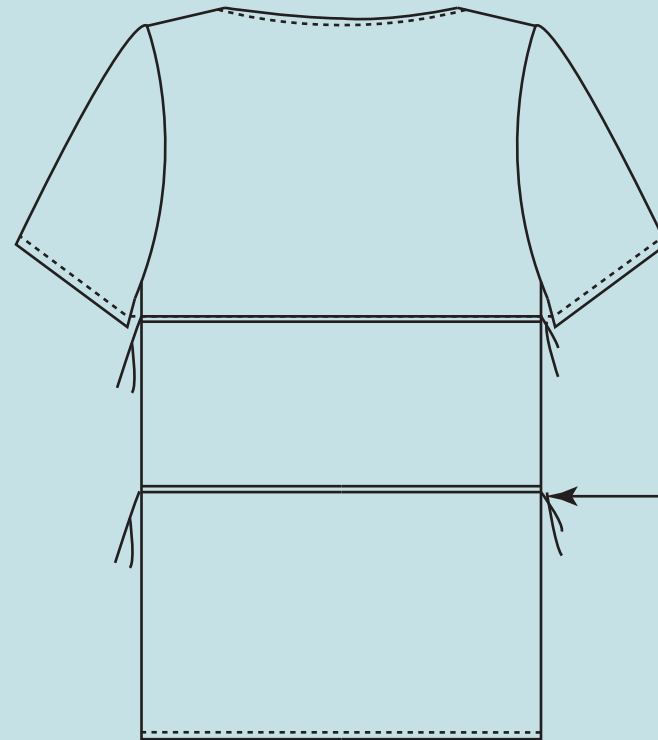


Workdrawing

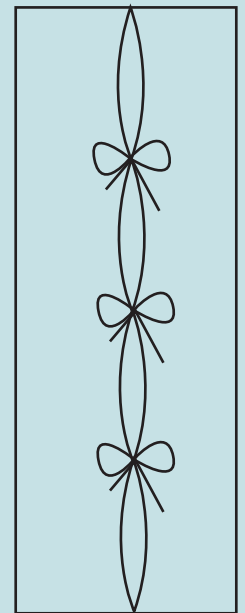
STYLE 5



1c.

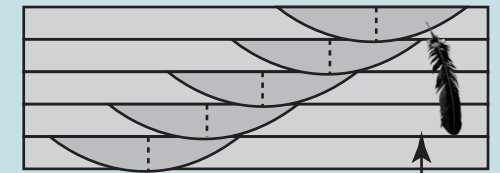
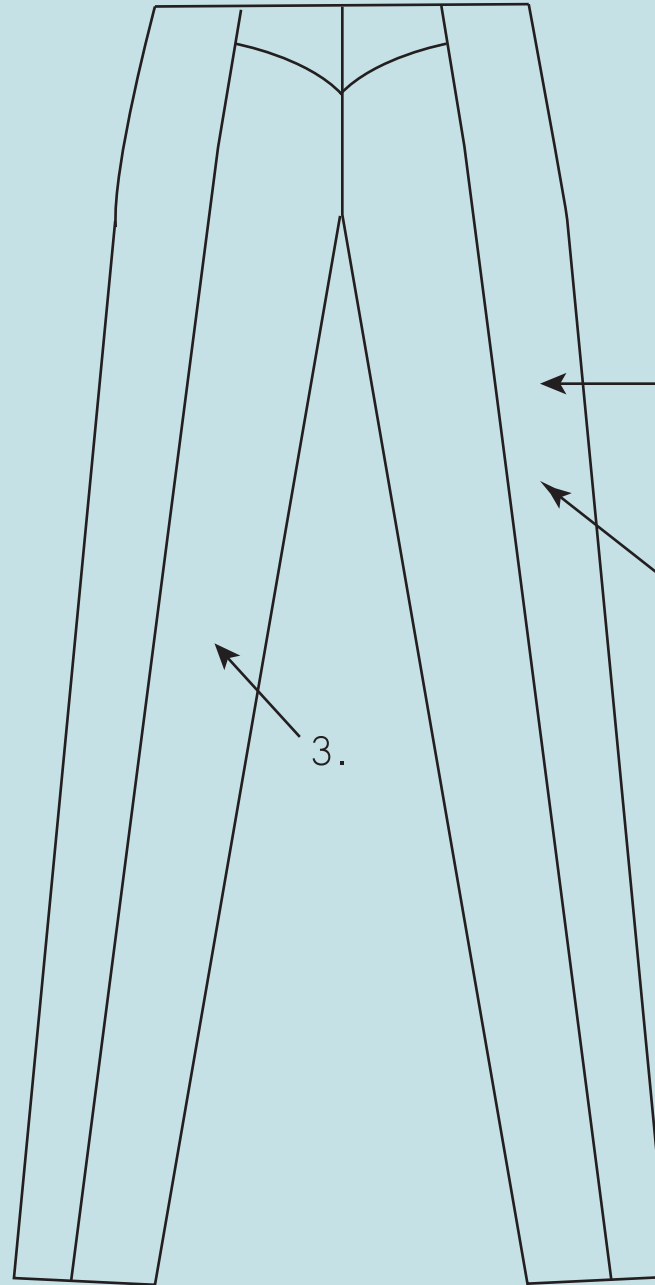
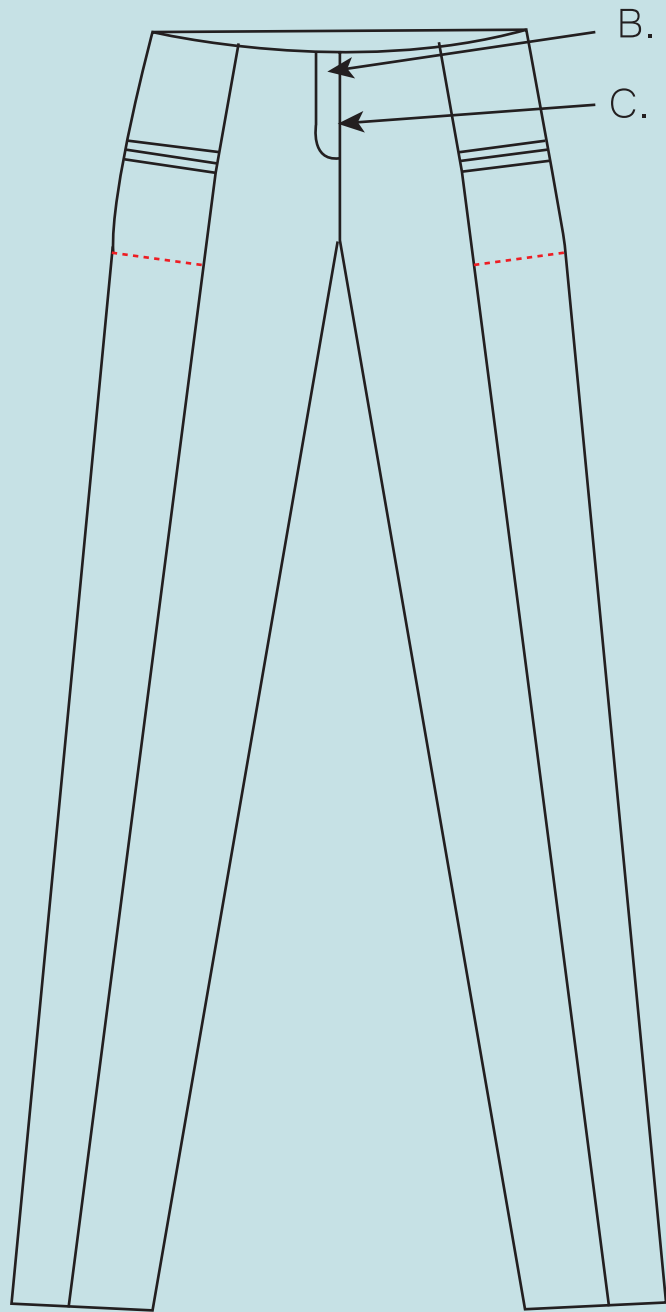


Detail of
side closure



Workdrawing

STYLE 6



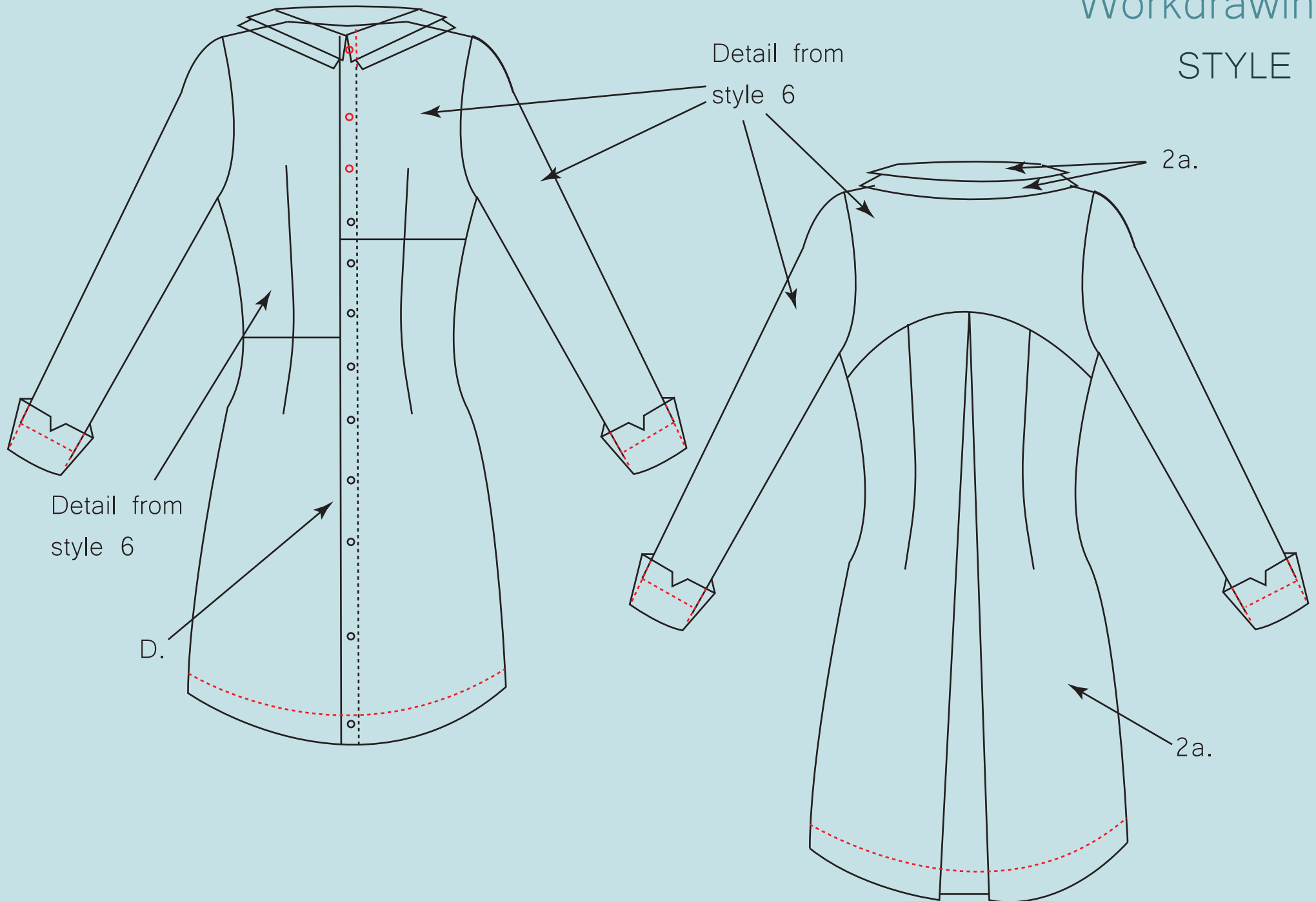
3.

K1.

Straps of fabric
folded over and
stitched down.

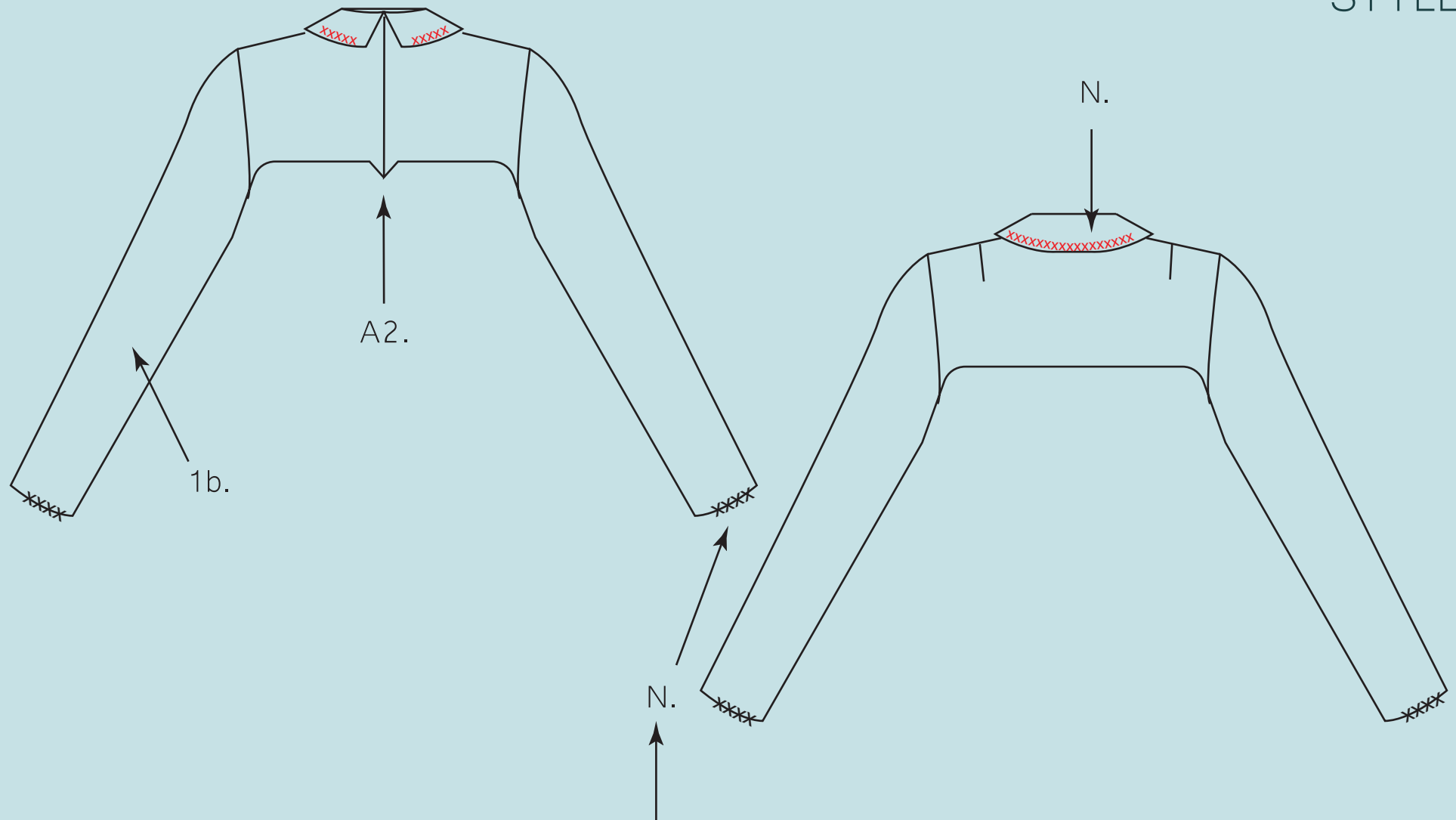
Workdrawing

STYLE 7

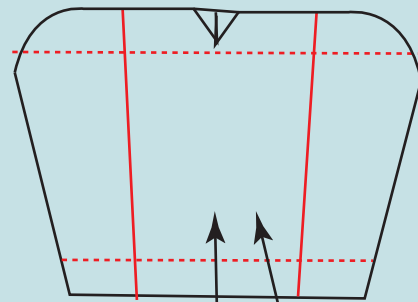


Workdrawing

STYLE 8

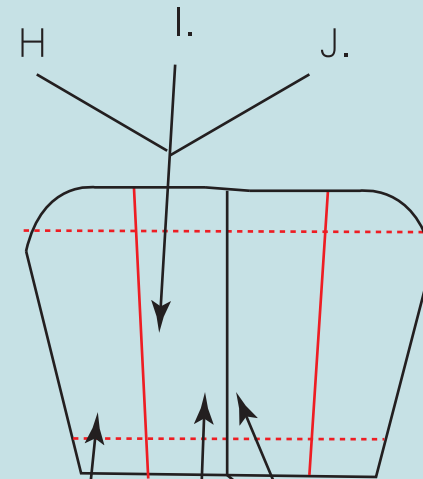


The knit is sown as a tube,
and used as a cuff



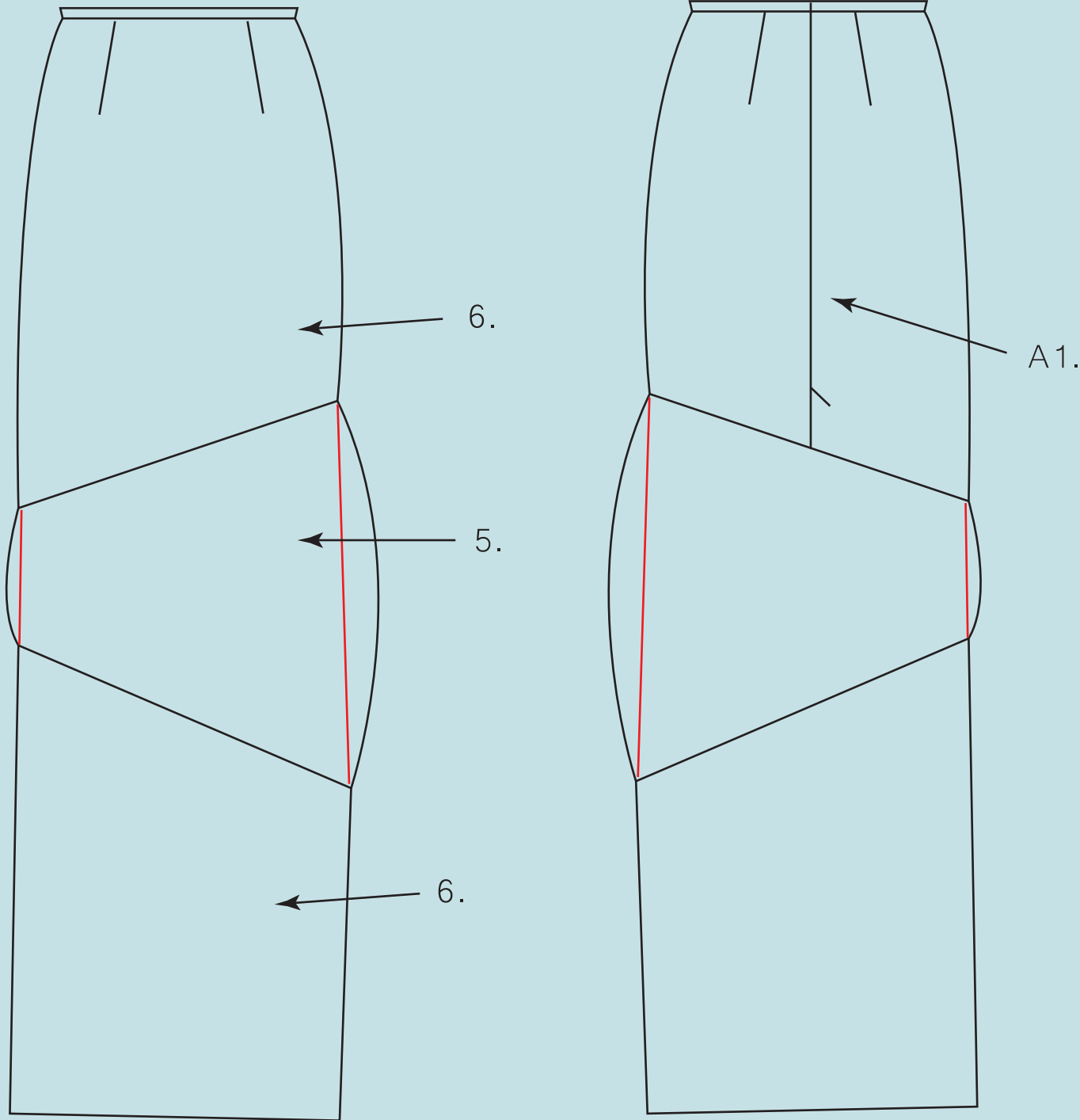
1b.

Detail from style 6
with K3. instead
of K1.



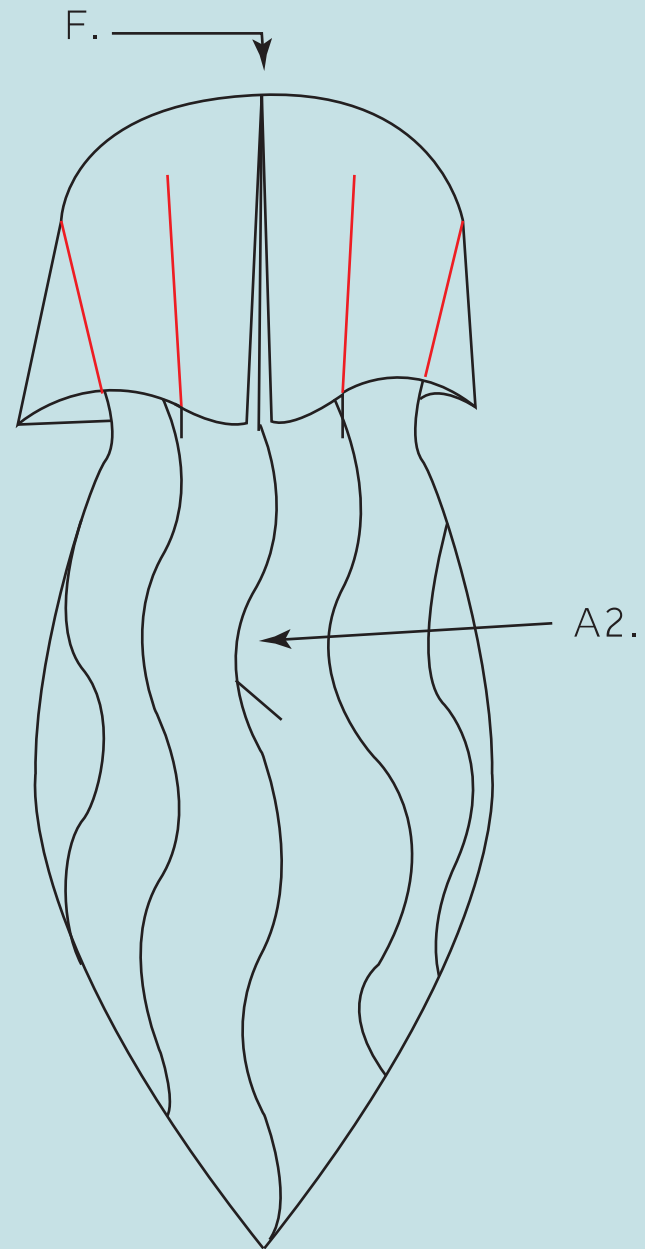
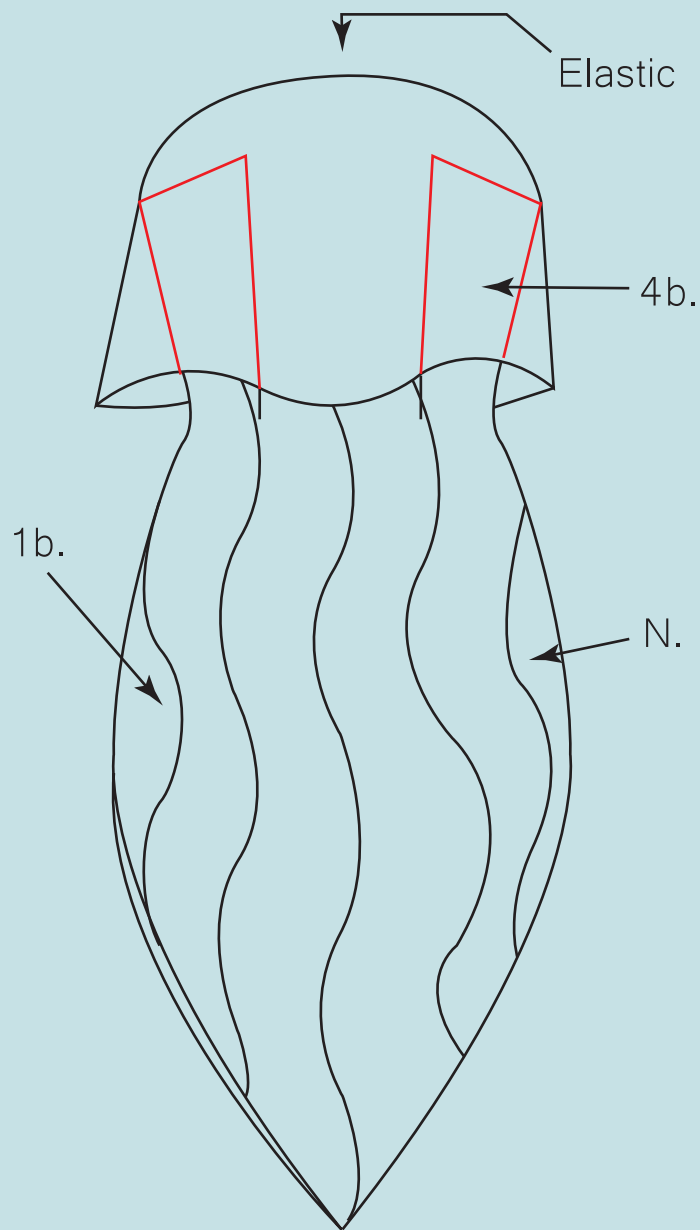
H
I.
J.
7.
E.
A2.

Workdrawing
STYLE 10



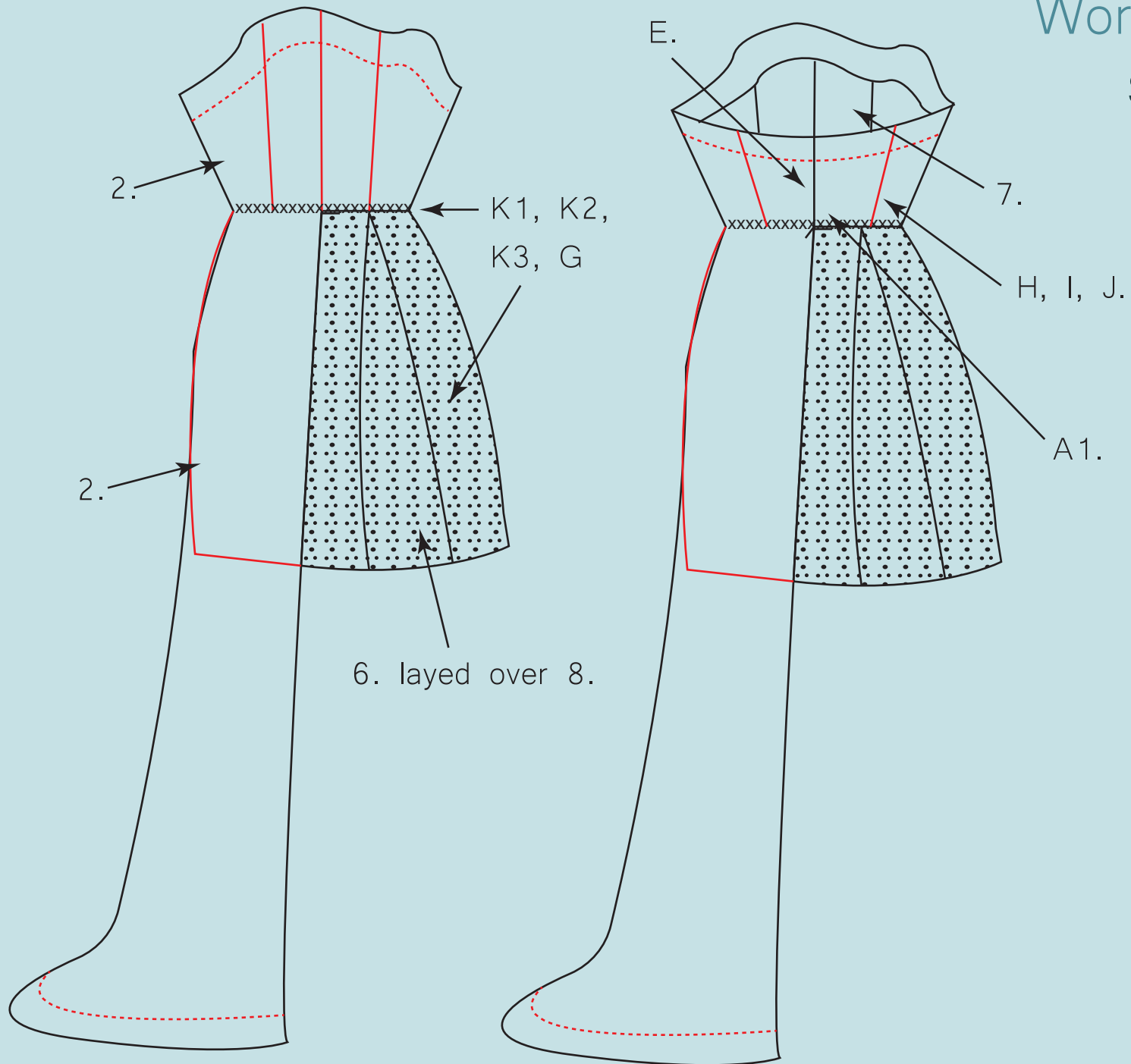
Workdrawing

STYLE 11



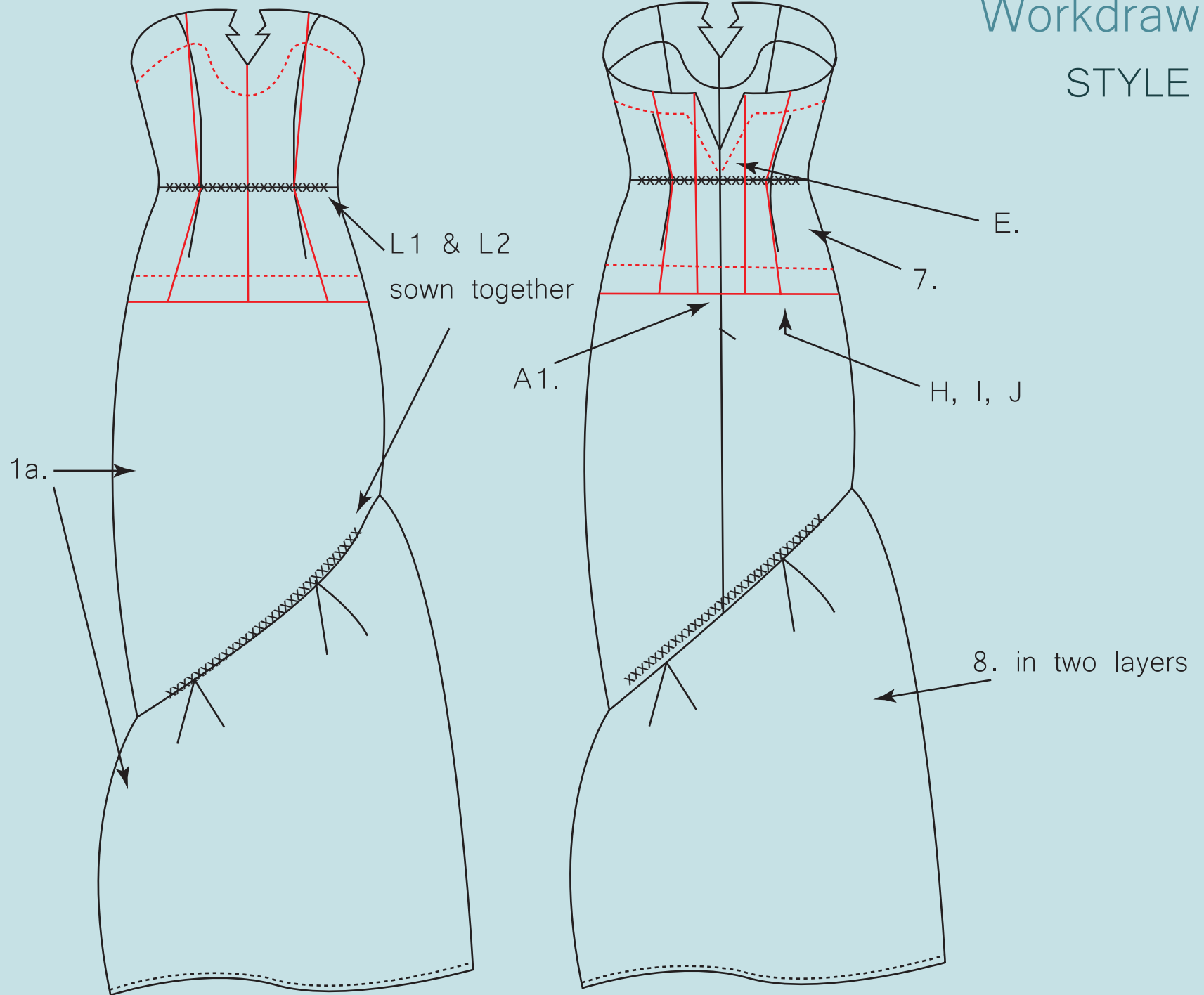
Workdrawing

STYLE 12

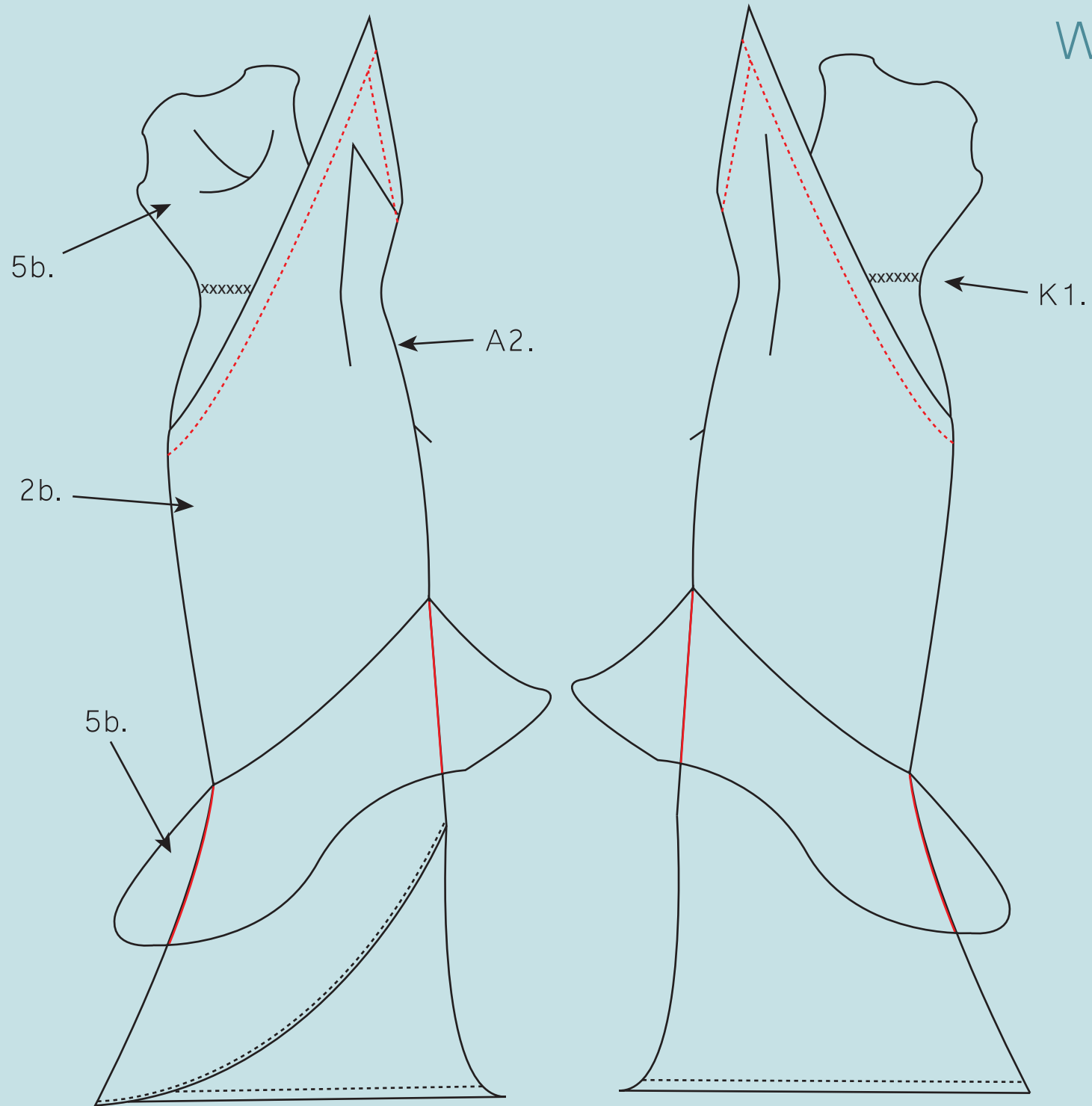


Workdrawing

STYLE 13

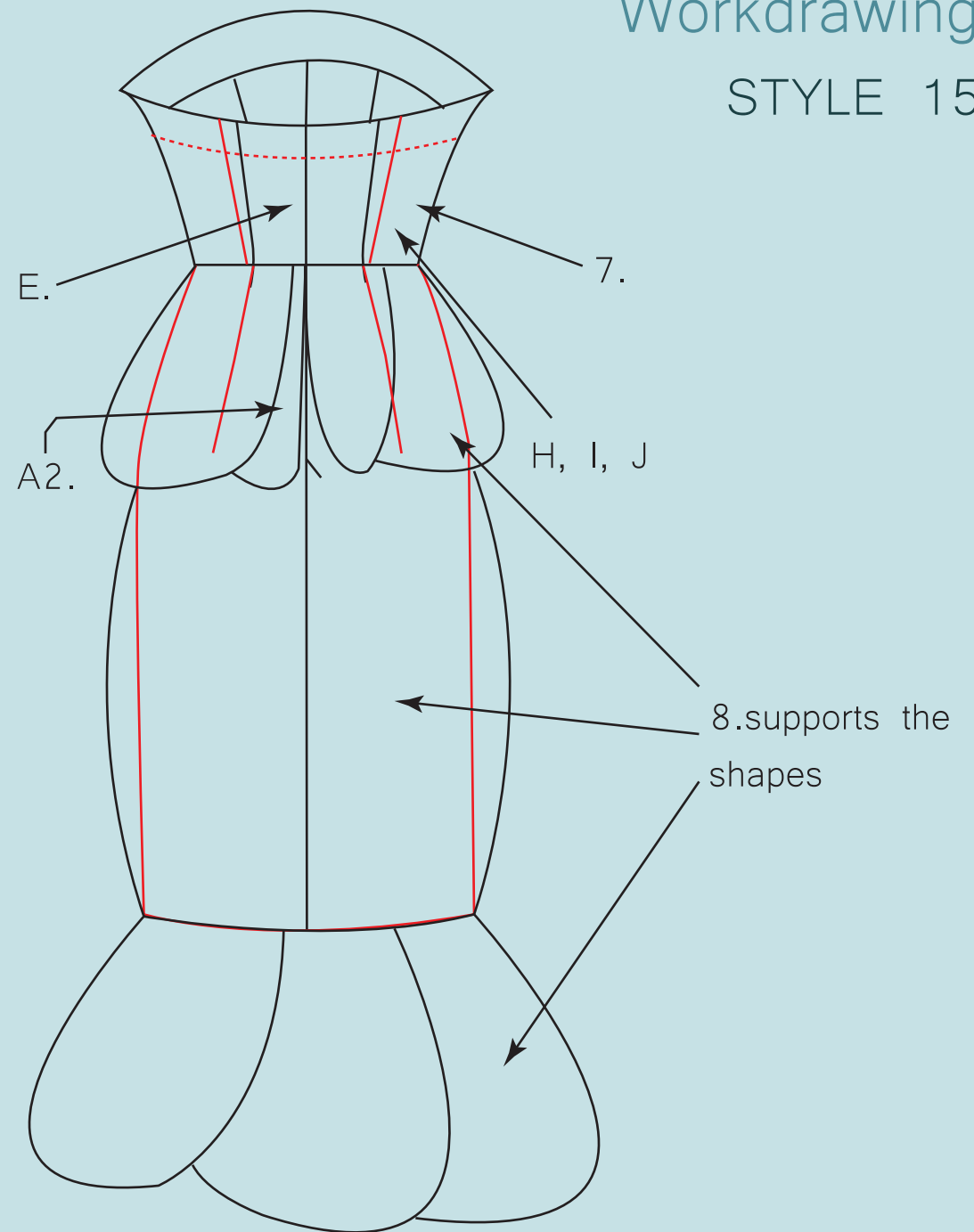
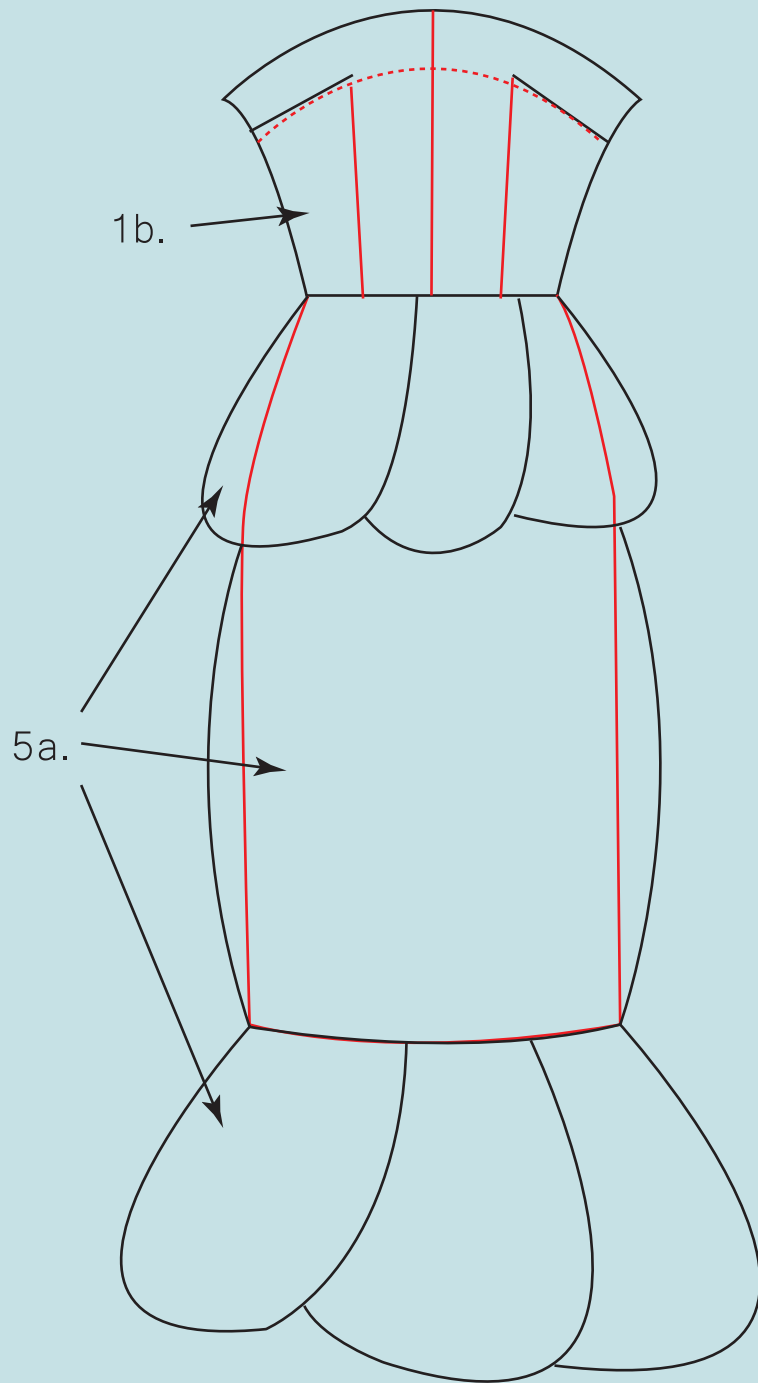


Workdrawing
STYLE 14

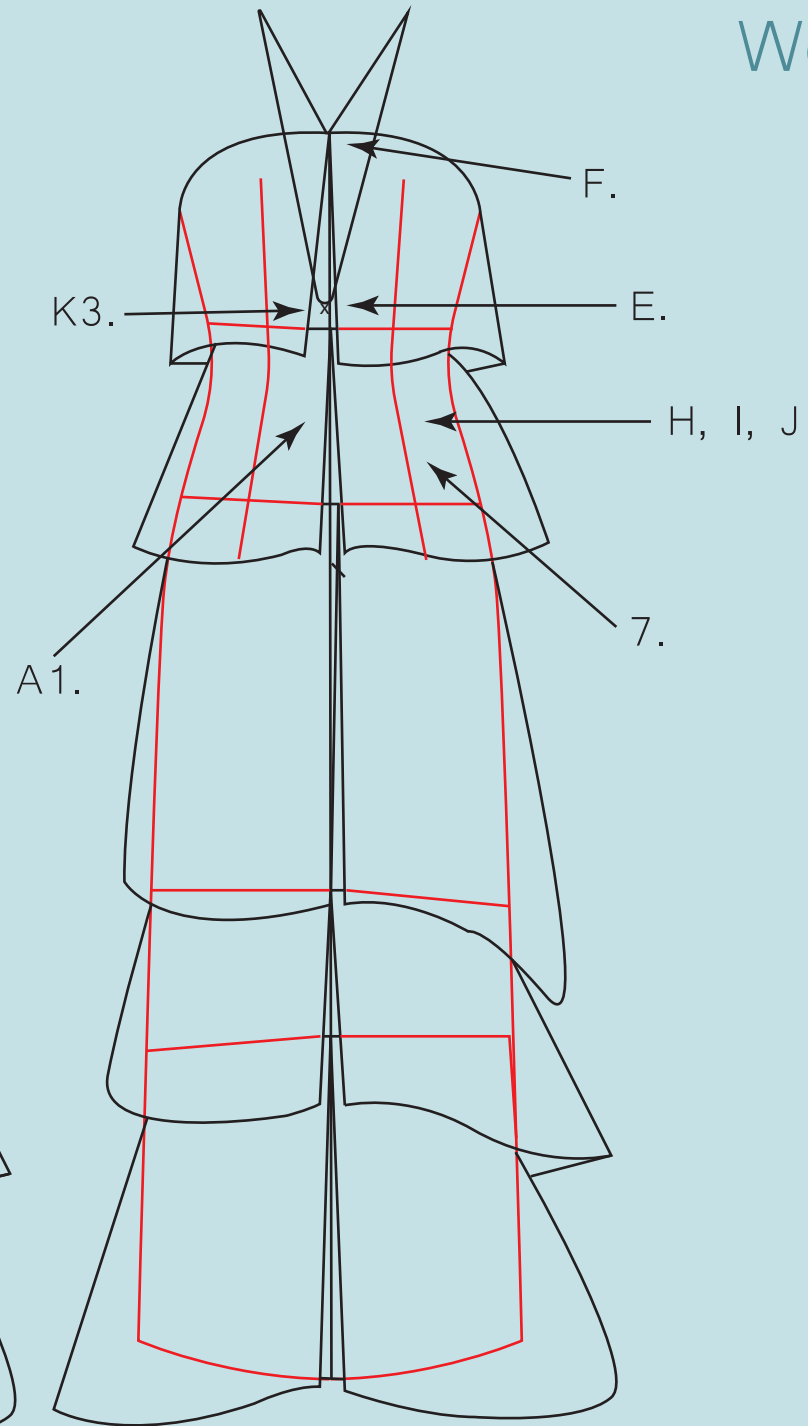
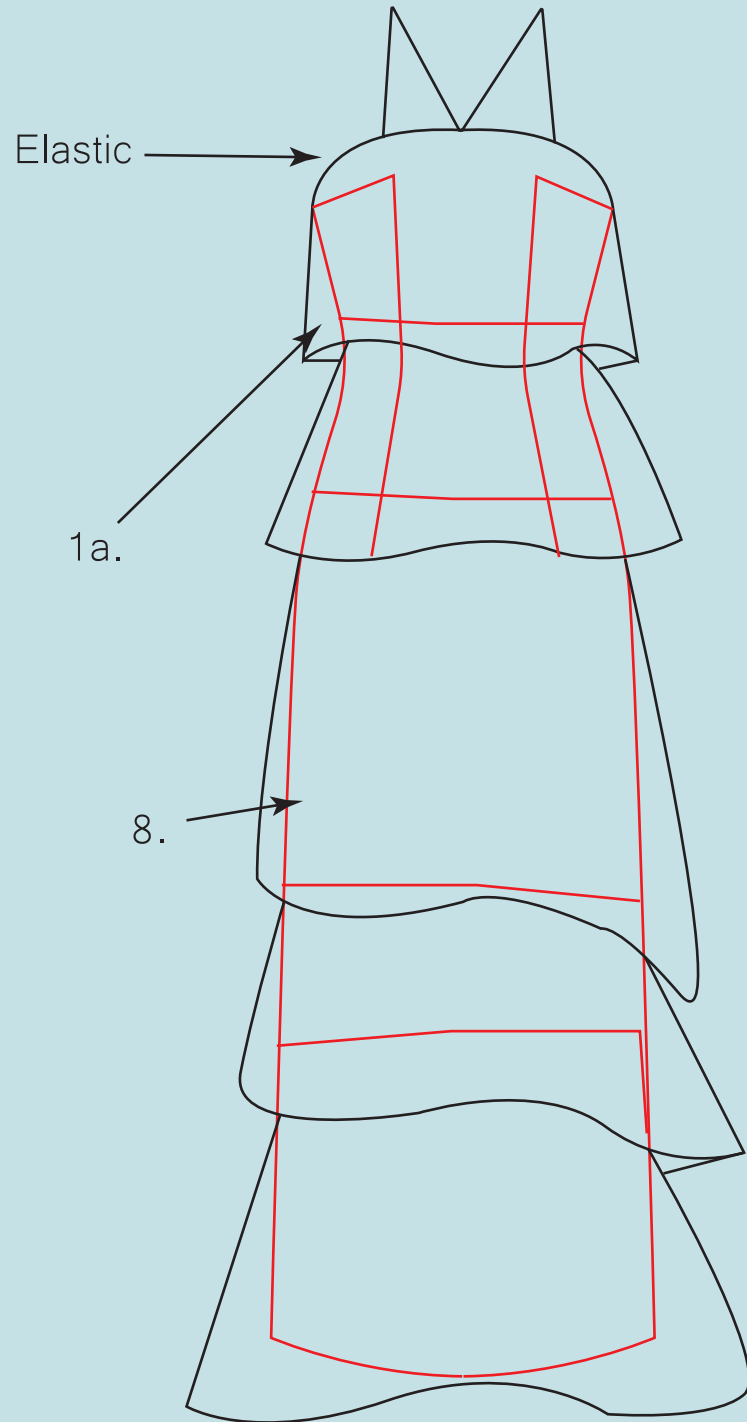


Workdrawing

STYLE 15



Workdrawing
STYLE 16



Workdrawing ACCESSORIE

