

# ELECTRIC FRYER 1 BOWL 10 L

Project .....  
Rev.: .....  
Zone: .....  
Location: .....



CODICE  
CR1358479

MODELLO  
Q70FRI/EE41

SERIE  
QUEEN 7

## GENERAL CHARACTERISTICS

For those who do not want to give up the quality and solidity of a Queen stove, the Series 7 offers a 700 mm depth and more compact dimensions to fit any room, burners available in various configurations and wattages, enhanced by the refined Scotch Brite finish.

Thanks to its extreme compositional freedom, every composition is possible: you can combine Model i tops with accessorizable oven and neutral bases and hygienic finishes; create customized solutions by matching and attaching equipment back to back, sideways "flush" perfectly sealed, or "bridge" structures, offering high-level solutions that always perfectly meet the chef's needs. As a total guarantee, all equipment that make up a Queen7 kitchen are certified in compliance with international standards, including CE, GAR, AGA and others.



## MODEL SPECIFICATIONS

- The tanks have a large pouring area and a cold zone at the bottom to collect food particles and prolong the life of the oil.
- Thanks to the jet-proofing certification obtained through specific tests, knobs and under-knobs can be washed at the end of the working day

- without compromising functionality and safety.
- The front bar is a comfortable foothold for the cook; it keeps a safe distance from the worktop and thus protects against accidental collisions with what is resting on the worktops and at the same time the handles.

## TECHNICAL SPECIFICATIONS

- Moulded upper surface machined from a single sheet of thick stainless steel.
- Large-capacity contoured firing tanks with large vertical expansion zone that prevents foam from settling during loading.
- Automatic regulation thermostat of the Fire safety thermostat (230°C).
- Oil drain taps.
- Holder for baskets and lids.
- Gas models
- Tubular steel burners outside the tank.
- Oil drain taps.
- Piezoelectric ignition of the pilot burner.
- Electric models
- Lifiable and removable stainless steel armoured heating elements.
- Optical signal when the programmed temperature has been reached.
- Indicator light "equipment under voltage."

# ELECTRIC FRYER 1 BOWL 10 L

Project .....  
Rev.: .....  
Zone: .....  
Location: .....



CODICE  
CR1358479

MODELLO  
Q70FRI/EE41

SERIE  
QUEEN 7

## Technical Information

SPECIFICATION	DATA
MATERIAL	CR1358479
DEFINITION	Q70FRI/EE41 FRIGGI. ELE 1V 10LT M40 A/G
COMMERCIAL LINE	QUEEN
SUPPLY	ELECTRICS
DIM. WIDTH	400 mm
DIM. DEPTH	700 mm
DIM. HEIGHT	870 mm
NET WEIGHT	37 Kg
VOLUME (net)	0.244
PACKAGE LENGTH	450 mm
PACKAGE WIDTH	850 mm
PACKAGING HEIGHT	1170 mm
PACKAGE VOLUME	0,467 m3
GROSS PACKING WEIGHT	47 Kg
STANDARD POWER SUPPLY	380-415V 3N
FREQUENCY	50-60 Hz
ELECTRICAL POWER	9,000 kW
IP GRADE	IPX3
CAPACITY	8 litri
CERTIFIED MODEL	Q70FRI/EE41

# ELECTRIC FRYER 1 BOWL 10 L

Project .....  
 Rev.: .....  
 Zone: .....  
 Location: .....

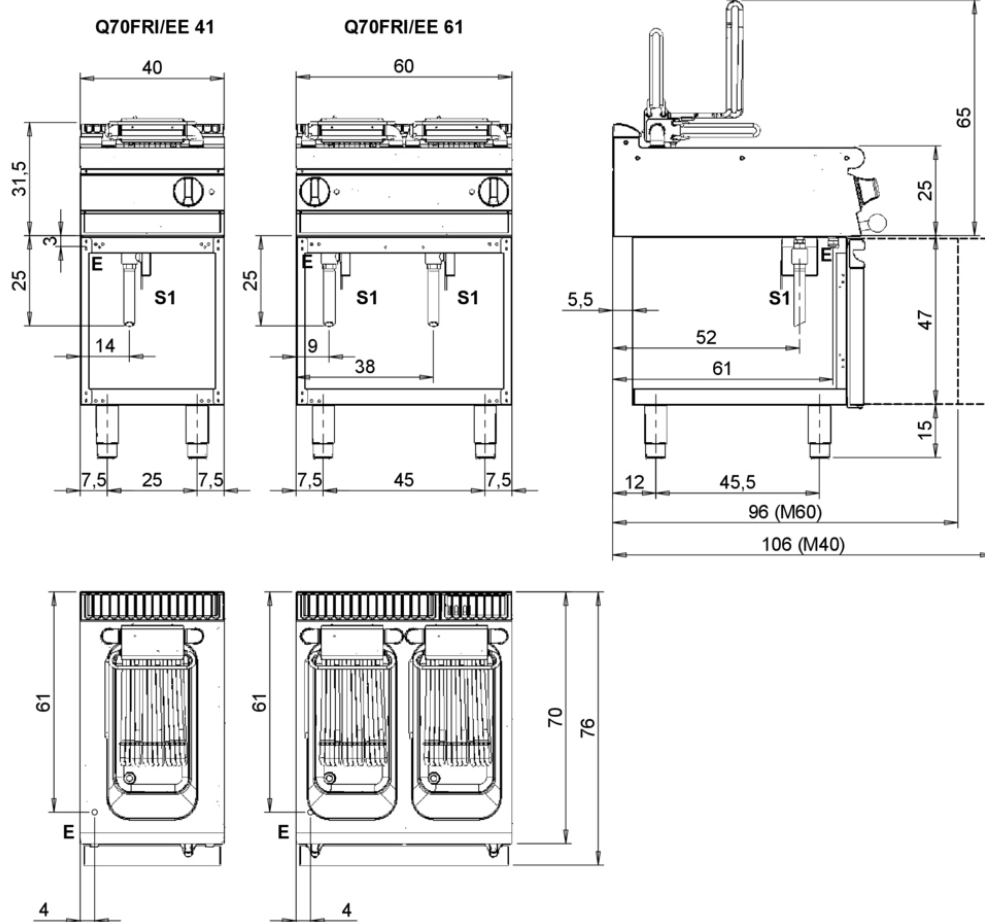


CODICE  
 CR1358479

MODELLO  
 Q70FRI/EE41

SERIE  
 QUEEN 7

MISURE IN cm - DIMENSIONS IN cm - ABMESSUNGEN IN cm - MESURES EN cm  
 MEDIDAS EN cm - MATEN IN cm - DIMENSIONES EN cm



## Legenda - Legende - Key - Légende - Leyenda - Legenda - Legenda

<b>E</b> Pressacavo entrata linea elettrica - Stopfbuchse - Electric cable stress relief - Presse étoupe de câble él - Pisacable - Elektrische kabelwartel - Entrada cabo eléctrico	<b>G</b> Arrivo gas - Gasanschluss - Gas connection - Arrivée gaz - Union de gas - Gasaansluiting - Ligação gás
<b>S</b> Attacco scarico acqua - Wasserablauf - Water outlet - Vidange de l'eau - Desaguadero - Wateraftapaansluiting - Junção descarga água	<b>H20</b> Arrivo acqua - Wasseranschluss - Water inlet - Arrivée eau - Union de água - Wateraansluiting - Junção alimentação água
<b>S1</b> Scarico vasca - Wannababflussrohr - Pan outlet - Vidange du bac - Descarga cuba - Water toevoer - Descarga da cuba	<b>A1</b> = Calda - Heiss - Warm - Chaude - Caliente - Warm - Morno <b>A2</b> = Fredda - Kalt - Cold - Froid - Fria - Koude - Frio
<b>S2</b> Valvola di depressione - Anti-depression valve - Unterdruck ventil - Soupape de dépression - Válvula de dépression - Onderdrukkelep - Válvula de depressão	
<b>S3</b> Scarico acqua intercapedine - Wasserablauf Zwischenraum - Jacket water drain Evacuation eau double envelope - Descarga de água intersticios - Afvoer water tussenruimte - Descarga de água na marmita com Sistema de aquecimento indirecto	
<b>S4</b> Scarico - Abflussrohr - Drain - Tuyau d'évacuation - Tubo de drenaje - Aftapbuis - Tubulação de dreno	<b>L</b> Rubinetto di livello - Level tap - Wasserhahn - Robinet de niveau - Grifo de nivel - Niveaakraan - Torneira de nivel

# ELECTRIC FRYER 1 BOWL 10 L

Project .....  
Rev.: .....  
Zone: .....  
Location: .....

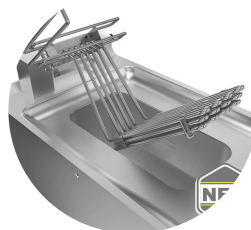


CODICE  
CR1358479

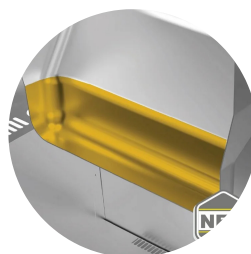
MODELLO  
Q70FRI/EE41

SERIE  
QUEEN 7

## PRODUCT'S RANGE PLUS



Heating element completely removable from the tank to allow faster and more complete cleaning. In 10- and 15-liter versions



The large cold zone allows frying residues to settle, significantly extending the quality and life of the oil.



In the gas version, the molded inner tank is clean with external burners for easy cleaning.



Tank depth and width increased to increase capacity.



Moulded basin with flat top and large cold zone for easy cleaning.

# ELECTRIC FRYER 1 BOWL 10 L

Project .....  
Rev.: .....  
Zone: .....  
Location: .....



CODICE  
CR1358479

MODELLO  
Q70FRI/EE41

SERIE  
QUEEN 7

## ACCESSORIES

CODE	MODELLO	DESCRIZIONE
CR0997179	<b>7BRO</b>	OIL PAN
BN418031940220	<b>CSFA FR6</b>	WINDPROOF FLUE EXHAUST CHIMNEY 600
BN418031940230	<b>CSFA FR8</b>	WINDPROOF FLUE STACK 800
BN418031940140	<b>GFF10</b>	BOTTOM GRID FRYER 10 L
BN418031940150	<b>GFF15</b>	BOTTOM GRID FRYER 15 L
BN418031940170	<b>CF10</b>	FRYER BASKET 10 L
BN418031940180	<b>CF15</b>	BASKET FOR FRYER 15 L
BN418031940190	<b>CF15P</b>	BASKET FOR FRYER 15 L
CR0985519	<b>CF10M</b>	FRYER BASKET 7/10 L
CR0985529	<b>GFF10M</b>	BOTTOM GRID FRYER 7-8 LT
MA10405096900	<b>OC-1M</b>	Basket for tub 8 Lt 1pcs 20x28x11,5 cm
MA10405230900	<b>ONC-1M</b>	Basket for tub 10 lt TOP17,5x30x10,5 cm ONLY TOP VERSION