

# 2 BURNER GAS STOVE - TOP VERSION - 28 KW

Project .....  
Rev.: .....  
Zone: .....  
Location: .....



CODICE  
CR1355679

MODELLO  
N6PC/G822

SERIE  
SERIE 600

## GENERAL CHARACTERISTICS

A line of small-sized cooking equipment designed for those who, even in small spaces, do not want to give up great performance. Made of AISI 304 18/10 stainless steel, finely finished with Scotch Brite satin finish, it has rounded edges and large capacity enclosures; it has 600/650 mm depth and modular width of 400/600/700/800/1000 mm; the series is completed by open, armored or refrigerated base supports.

The equipment is easily modular to one another until it forms a compact, gap-free whole thanks to a leak-covering profile that provides protection against leakage and thus maximum hygiene. High chimneys, ergonomic knobs mounted on a sloping dashboard for easy visibility, give the range ease of use from the first approach.

All models are CE approved.



## MODEL SPECIFICATIONS

## TECHNICAL SPECIFICATIONS

- Hobs have power ratings that are characteristic of large models.
- Burners of 3.85 kW and 5.7 kW (7kw in the upgraded version). The cooktop is stamped in one piece, made of AISI 304 18/10 stainless steel with Scotch Brite finish, with large radii and large capacity for collecting overflowing liquids.
- Enameled cast-iron grills to ensure long service life. Gas cooktops are

designed with pilot flame, thermocouple and valved faucet to ensure maximum safety.

- Indicator lamp to signal energized equipment. GN 1/1 size ovens are available gas with adjustable temperature from 140-280°C, and electric both static and ventilated with adjustable temperature from 110 - 280°C.

## 2 BURNER GAS STOVE - TOP VERSION - 28 KW

Project .....  
Rev.: .....  
Zone: .....  
Location: .....



CODICE  
CR1355679

MODELLO  
N6PC/G822

SERIE  
SERIE 600

### Technical Information

SPECIFICATION	DATA
MATERIAL	CR1355679
DEFINITION	N6PC/G822 4 FUOCHI POTENZIATA 60 M80
COMMERCIAL LINE	SERIE 600
SUPPLY	GAS
DIM. WIDTH	800 mm
DIM. DEPTH	650 mm
DIM. HEIGHT	295 mm
NET WEIGHT	38 Kg
VOLUME (net)	0.153
PACKAGE LENGTH	440 mm
PACKAGE WIDTH	780 mm
PACKAGING HEIGHT	680 mm
PACKAGE VOLUME	0,233 m3
GROSS PACKING WEIGHT	44 Kg
GAS POWER	30,80
GAS POWER (G25.3/25mbar)	26,40
N. FIRES/PLATES	QUATTRO FUOCHI
CERTIFIED MODEL	N6PC/G822

# 2 BURNER GAS STOVE - TOP VERSION - 28 KW

Project .....  
 Rev.: .....  
 Zone: .....  
 Location: .....



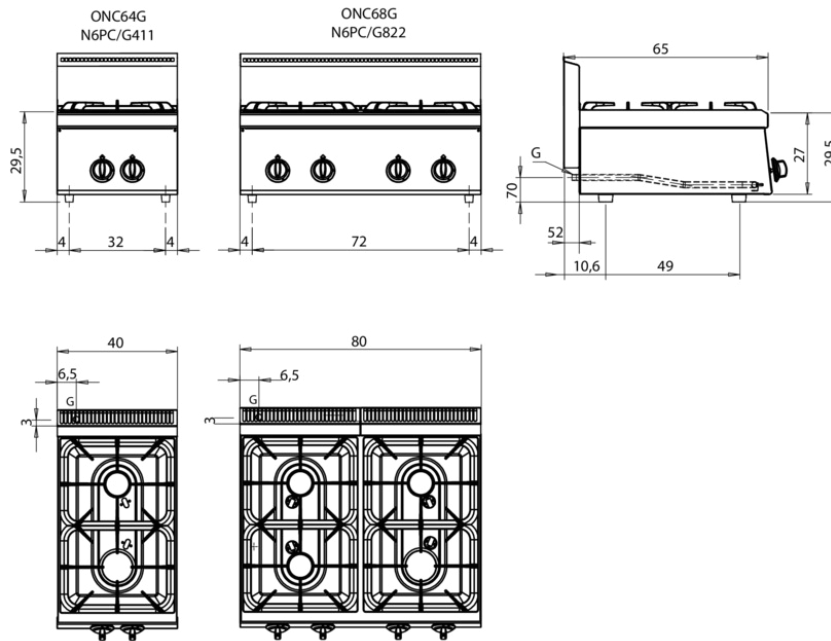
CODICE  
CR1355679

MODELLO  
N6PC/G822

SERIE  
SERIE 600

## Schema di installazione - Installation diagram - Installationsplan Schéma d'installation - Esquema de instalacion - Installatieschema

MISURE IN cm - DIMENSIONS IN cm - ABMESSUNGEN IN cm - MESURES EN cm - MEDIDAS EN cm - MATEN IN cm



Legenda - Legende - Key - Légende - Leyenda - Legenda - Legenda	
E	Pressacavo entrata linea elettrica - Stopfbuchse - Electric cable stress relief - Presse étoupe de câble él - Pisacable - Elektrische kabelwartel - Entrada cabo eléctrico
S	Attacco scarico acqua - Wasserablauf - Water outlet - Vidange de l'eau - Desaguadero - Wateraftapaansluiting - Junção descarga água
S1	Scarico vasca - Wannenabflussrohr - Pan outlet - Vidange du bac - Descarga cuba - Water toevoer - Descarga da cuba
S2	Valvola di depressione - Anti-depression valve - Unterdruck ventil - Soupape de dépression - Válvula de depresión - Onderdrukklep - Válvula de depressão
S3	Scarico acqua intercapedine - Wasserablauf Zwischenraum - Jacket water drain Evacuation eau double envelope - Descarga de agua intersticios - Afvoer water tussenruimte - Descarga de água na marmita com Sistema de aquecimento indirecto
S4	Scarico - Abflussrohr - Drain - Tuyau d'évacuation - Tubo de drenaje - Aftapbuis - Tubulação de dreno
G	Arrivo gas - Gasanschluss - Gas connection - Arrivée gaz - Union de gas - Gasaansluiting - Ligação gás EN 10226-1 R 1/2; EN ISO 228-1 G 1/2 (DK)
H20	Arrivo acqua - Wasseranschluss - Water inlet - Arrivée eau - Union de agua - Wateraansluiting - Junção alimentação água A1 = Calda - Heiss - Warm - Chaud - Caliente - Warm - Morno A2 = Fredda - Kalt - Cold - Froid - Fria - Koude - Frio
L	Rubinetto di livello - Level tap - Wasserhahn - Robinet de niveau - Grifo de nivel - Niveaakraan - Torneira de nível

## 2 BURNER GAS STOVE - TOP VERSION - 28 KW

Project .....  
Rev.: .....  
Zone: .....  
Location: .....



CODICE  
CR1355679

MODELLO  
N6PC/G822

SERIE  
SERIE 600

# PRODUCT'S RANGE PLUS



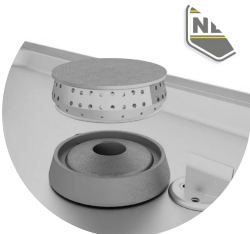
GN 1/1 ovens with stainless steel inner walls in the static gas version and static and ventilated electric ovens with armoured heating elements on the top and bottom.



Cast-iron grids on the top with long spokes allow even small pots to be placed on them.



Burners with power ratings of 3.85kW and 5.7kW (7kw in the enhanced version), valved taps and stabilized flame thermocouple to ensure maximum safety.



Cast-iron burner with removable crown for easy cleaning and separate pilot flame for optimal operation.