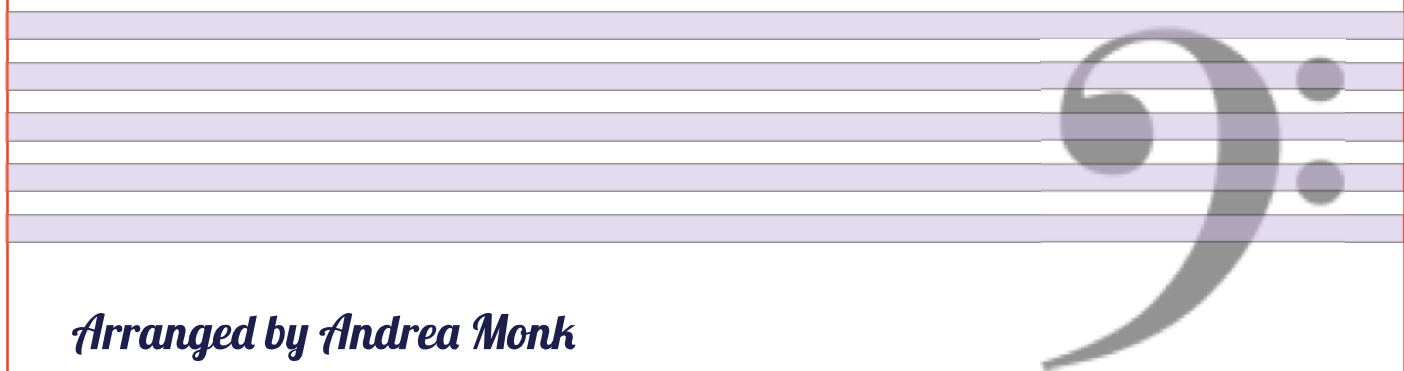
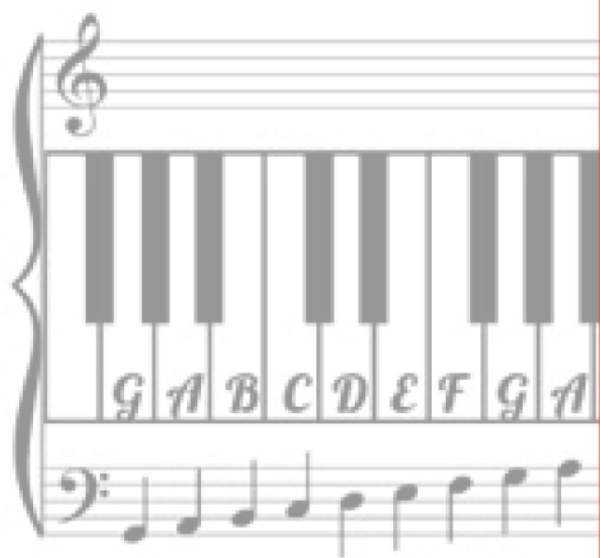


In The Hall Of The Mountain King



By Edvard Grieg in 1875

Piano Level 1



Arranged by Andrea Monk

In The Hall of The Mountain King by Grieg

(Alton Towers Theme)

Beginner Piano Level 1

Pattern 1: Bars 1 to 8




Musical notation for Pattern 1: Bars 1 to 8. The piece is in 4/4 time. The right hand (treble clef) plays a sequence of half notes: C4 (bar 1), D4 (bar 2), E4 (bar 3), and F4 (bar 4). The left hand (bass clef) plays a sequence of quarter notes: C3 (bar 1), D3 (bar 2), E3 (bar 3), and F3 (bar 4). Fingering numbers 4, 2, 2, and 1 are indicated above the notes in the right hand.

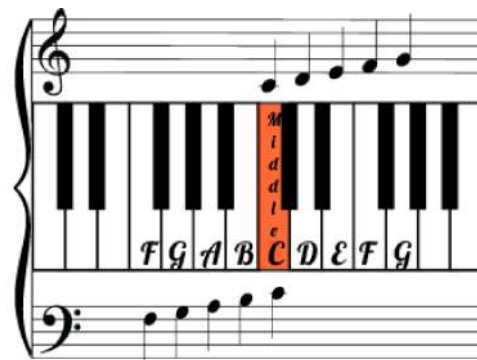
Musical notation for Pattern 1: Bars 5 to 8. The right hand continues with half notes: G4 (bar 5), A4 (bar 6), B4 (bar 7), and C5 (bar 8). The left hand continues with quarter notes: G2 (bar 5), A2 (bar 6), B2 (bar 7), and C3 (bar 8). Fingering numbers 4, 2, 2, and 4 are indicated above the notes in the right hand.

9 Pattern 2: Bars 9 to 16

Musical notation for Pattern 2: Bars 9 to 16. The right hand plays a sequence of half notes: C4 (bar 9), D4 (bar 10), E4 (bar 11), and F4 (bar 12). The left hand plays a sequence of quarter notes: C3 (bar 9), D3 (bar 10), E3 (bar 11), and F3 (bar 12). Fingering numbers 4, 2, 3, and 3 are indicated above the notes in the right hand.

Musical notation for Pattern 2: Bars 13 to 16. The right hand continues with half notes: G4 (bar 13), A4 (bar 14), B4 (bar 15), and C5 (bar 16). The left hand continues with quarter notes: G2 (bar 13), A2 (bar 14), B2 (bar 15), and C3 (bar 16). Fingering numbers 4, 2, 2, and 2 are indicated above the notes in the right hand.

 = 1 Beat
 = 2 Beats
 = 4 Beats



17 *Pattern 3: Bars 17 to 24*

21

25 *Pattern 4: Bars 25 to 32*

29

LH crosses
over to play
the note A

In The Hall of The Mountain King Help!

Pattern 1: Bars 1 to 8

Left hand plays B flat

Right hand plays D flat

This is also played as D flat

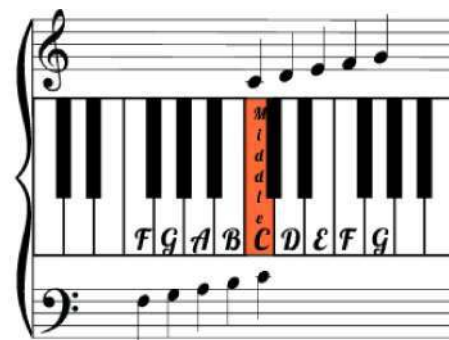
5

Play with even fingers only

9 **Pattern 2: Bars 9 to 16**

Left hand plays A flat

13



17 *Pattern 3: Bars 17 to 24*



21



25 *Pattern 4: Bars 25 to 32*



29

