

THE REAL STORY ABOUT POWER PLATFORM

The journey to end all journeys...

René Henriksen

WHO AM I?





THE GLORIOUS WORLD OF MICROSOFT

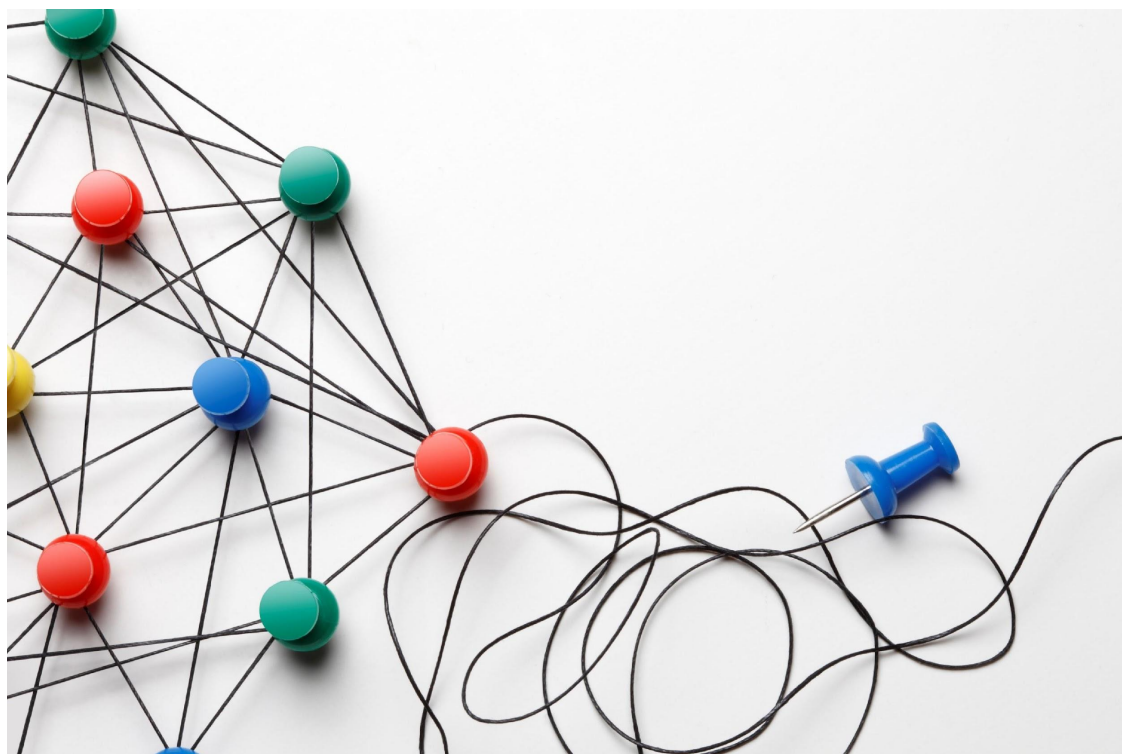
The easy sales pitch from a shallow-minded utopia?



Speed

THE GLORIOUS WORLD OF MICROSOFT

The easy sales pitch from a shallow-minded utopia?



Connectivity

THE GLORIOUS WORLD OF MICROSOFT

The easy sales pitch from a shallow-minded utopia?



Innovation Culture

THE GLORIOUS WORLD OF MICROSOFT

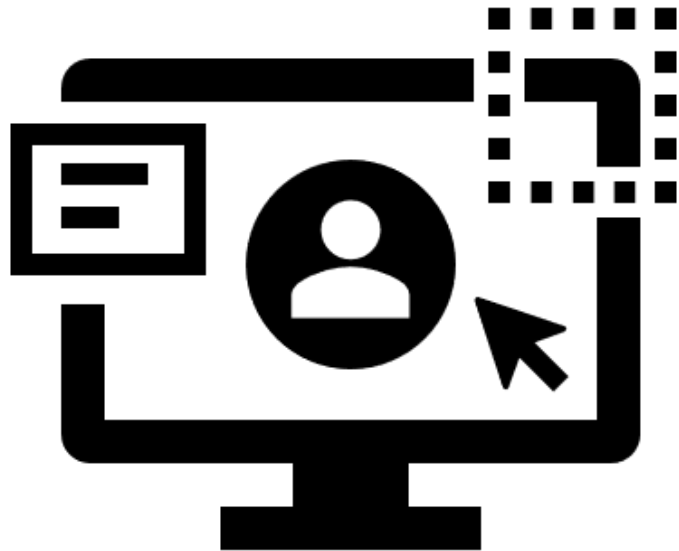
The easy sales pitch from a shallow-minded utopia?



Potential



IMPLEMENTING BEFORE GOVERNANCE



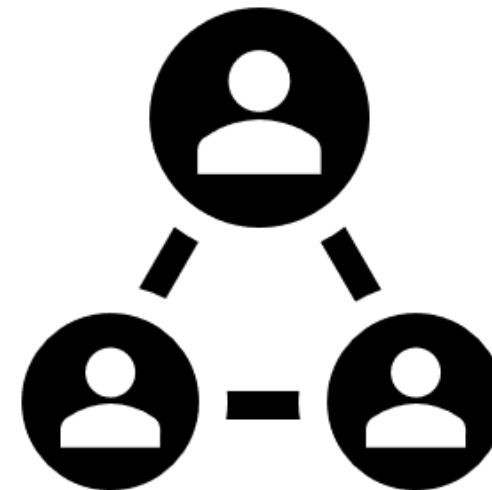
RESOURCES

The manager's joy of outsourcing

"So you're saying we don't have to manage any servers ourselves anymore?"

- Maintenance – of content (we will get back to this)
- Configuration
- User adoption
- Licenses (next slide!)
- External partners

= Does IT really save any money going to the cloud?



LICENSING

The jungle that keeps planting new trees

- New services
- New subscription models
- New premium solutions
- System users and multiplexing

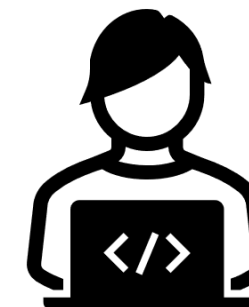
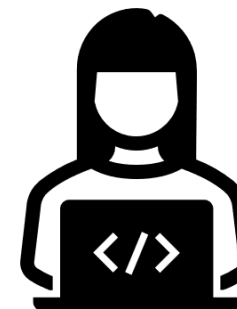
= Budgeting becomes nigh on impossible!



CITIZEN VS PRO DEV

The two ways of the samurai and everything in between

- Culture change
- Easy, but not that easy
- Encourage play, but reduce risks
- Difficulty in identifying processes worthy of automation
- "Plejer"
- Internal Power Platform Development Team

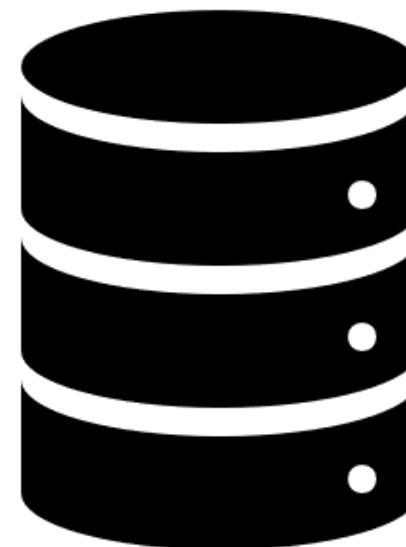


= Where do you start?

DATA DILEMMAS

Da-da-daaaaata

- Who owns data – and when is it placed where?
- No (simple) migration of data sources
- GDPR and data classification
- SharePoint cannot effectively mimic an environment strategy
- Out-of-the-box connections or your own?



SECURITY ISSUES

The free-for-all buffet

- The use of system accounts
- Access to both solution and data
- The maker solution access issue
- DLP issues and Low-code Misconfiguration
- Azure network segregation through Landing Zones
- Implicit Connections!



WHO OWNS WHAT?

I think this is yours!

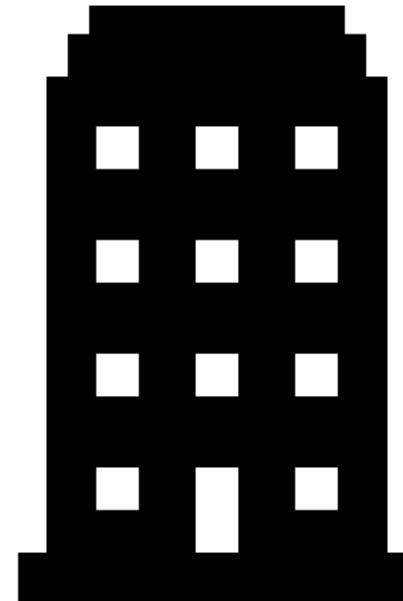
- Is the CoE solution the solution?
- Sprawl
- Lifecycle Management
- Documentation



IDENTITY

Who made this?

- Corporate branding
- UX/UI
- Accessibility





BUT WHY THEN?

Because it does work – if you put in the work!

In Energinet we have implemented these solutions in 2022:

- Profile picture management in Power Automate
- Portfolio management of more than 500 projects in Power Apps, including
 - Risk management
 - Resource capacity
 - Digital roadmap
- Electric Car Charger Power App
- Server Calculation Power App
- Event registration Power App
- QHSE Power App
- Group Access Power App for support

Citizen or shared solutions

- Canteen Power App
- Sensor Power App
- Visitkort order in Power Automate
- Mastercard order in Power Automate

OUR NEXT STEPS @ ENERGINET

Citizen Developers

- Establish a proper, usable community of makers
- Create a searchable database of actual solutions being used
- Create a body of best practices for citizen development
- Promote the good examples

Pro Developers

- Bringing a data map to the forefront
- Setting up actual ALM and real coding principles
- Create an easy onboarding setup and process for Pro developers (hardware, software and access)

THE FIRST SMALL IMPORTANT STEPS

- Secure your standard environment (DLP, naming)
- Set a standard DLP policy so that (primarily) Teams environments are given it
- Start working on an environment strategy
- Start looking into Managed Environments
- Start using solutions for everything
- Consider the CoE Starter Kit
- Tell your management that this requires resources
- Go through your licensing and prepare administrative flows to run under a single system user



ANY QUESTIONS?