

Open Call

# Expanded Spaces:

Residency at Nea Livera,  
Greece

Deadline **15th May, 2024**

Length of Residency:  
 minimum 2 weeks  
 maximum 1 month

Application deadline:  
 15th May, 2024

# Expanded Spaces, Residency at Nea Livera

After more than a decade of supporting artistic growth and advocating the decentralization of culture from our headquarters in Centro Negra (Blanca, Murcia) AADK Spain is thrilled to stretch its practice to the remote, beautiful Greek Peloponnese Region. We embark on this journey to explore new landscapes and histories, guided by local experts.

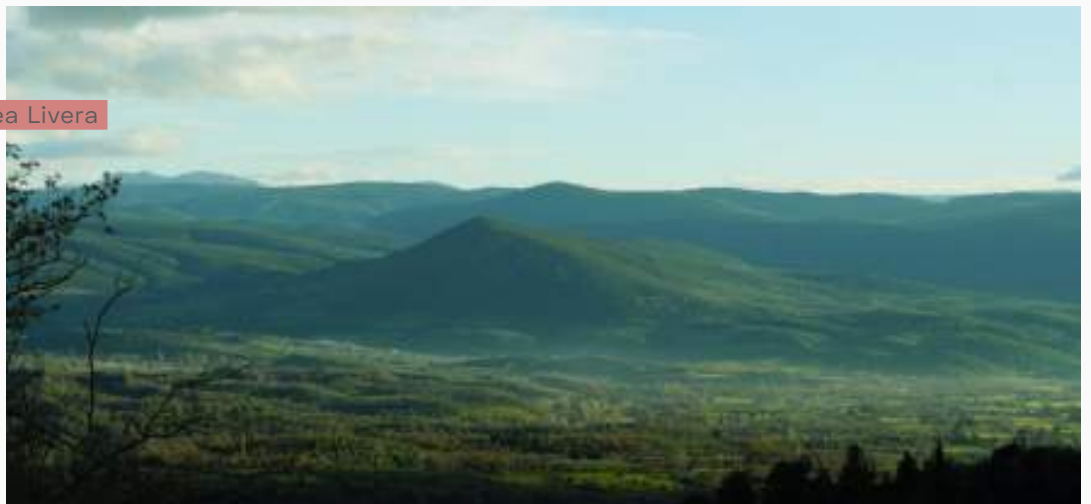


Selected projects will be notified within 1 week after the deadline.

This Open Call invites **artists of all disciplines, researchers, writers and curators** to apply for a **pioneering Residency edition** in the untamed village of **Nea Livera**, Greece, conceived in collaboration with the Greek performer, Manos Kotsaris. Selected candidates will join us in this uncharted territory of rugged mountains and sweeping vistas. At its core, the residency aims to redefine the traditional artist's studio practices and embrace the boundless potential of the outdoor natural environment. Participants will be invited to engage with the raw, natural beauty of the surroundings for a wild outdoor exploration of their creative potential.

This Residency will take place in **November & December 2024**. Participants can choose between a **2-week or 4-week stay**, with starting dates on the 1st or 16th of each month. Artists will be hosted in our guest house, which offers a panoramic view of the surrounding valley and the towering peaks of Taygetos, an idyllic and tranquil enclave. No more than 2 participants will be hosted at the same time.

Photo / Nea Livera



# What to expect:

The residency offers an idyllic environment for dedicating time, space, and energy to **creative growth**.

**Guided by Manos Kotsaris**, participants will be invited to join on punctual **excursions** in nearby locations such as Leonidio, Sparta, and others. They will also have the chance to share informal **lunches, weekly feedback sessions, and optional practices facilitated by Abraham Hurtado**. As for the rest of the time, each participant will be invited to self-organize and encouraged to explore and research in the mountains at their own pace.

Being the first edition of this residency, participants will also have the opportunity to **brainstorm and discuss with the team the further development of the project**, becoming active agents and shaping the trajectory of this new initiative. This is an invitation to think together about how residencies can engage with these difficult times where wars, climate change, migration, and social injustice are evident issues.

In collaboration with **Aldarrax Editions**, a publication will be made compiling the experiences of all participants –a testament to the insights and discoveries unearthed during the residency. From the written word to captivating soundscapes, artists will have the opportunity to share their experiences in a variety of formats, ensuring that their reflections during the time spent in the Peloponnese Region.



Photo / Hiking in Castor Gorge





# About the curating artists:

**Abraham Hurtado** is an Artist and Cultural Manager with an extensive background in performance and movement, but active in diverse disciplines. His work investigates human behavior in response to the conditions society imposes on the bodies, as well as the commodification of more and more aspects of our existence. If the personal is political, then the political invades the core of each individual.

He is the founder and Artistic Director of AADK Spain, active since 2012, with headquarters at Centro Negra, Blanca (Murcia, Spain).

Hurtado's work has been presented in Europe, and South America. He has participated as an artist and as a curator in several exhibitions and festivals in Berlin, Lisbon, Murcia, Barcelona, Seville, Gent, Stockholm, Bogotá, México, Argentina, among others. Currently is an Associate Artist at Zero point, a Berlín based project directed by Meg Stuart.

**Manos Kotsaris** is a Greek performer artist, with a degree from the National School of Dance (2018). His practice focuses on the significance of bodies in conserving, rehearsing, challenging social and political realities.

He has presented his work and shared his practices for very different target groups in frameworks such as Non Governmental organizations for educational purposes, street performance projects, artistic collectives, and festivals.

He has toured and produced works in Europe, and has worked for artists such as Meg Stuart, Kat Valastur, Euripides Laskaridis, Sasha Waltz, Christos Papadopoulos, and others. Moreover, Kotsaris has collaborated with Abraham Hurtado for several years.

Since 2020 he has been developing his choreographic research, technique and teaching experience by giving and following contemporary, composition and improvisation classes mainly in Europe

Instagram: @manoskotaris





# Accommodation



Photo / Guest house



## Who can apply

Artists, researchers, curators, writers.  
No age limit. Individual or duo projects are wellcome.

## Residency Includes

Accommodation in an individual room  
Shared studio with desk and WIFI  
Access to common areas and outdoor spaces  
•  
• Weekly collective dinner  
• Gatherings for feedback and exchange  
• Workshop on outdoor practices, by Manos Kotsaris  
Guided hike / excursion  
Documentation of your work (photo & video)  
Being included in a publication about Expanded Space, by Aldarrax Editions  
Individual mentoring and collective activities, on agreement.

## Timeline

May 15th – Application Deadline.  
*Applications close at 11.59 pm, CET.*  
May 20th – Notification of results  
July 15th – Due date for the payment of 50% of the program's fee  
August 15th – Due date for the payment of the remaining fee  
August 31st – Public announcement of participating artists  
November 1st to December 30th – Residencies will take place

## How to apply

Complete our online application at [here](#) or request a downloadable version by email. Please note that you must include a PDF (Max. 10MB) with the following information:

- CV
- Portfolio (in case of audiovisual works, attach the corresponding links)

Selected participants can request a **letter of acceptance** from our organization to apply for grants such as individual mobility, by Culture Move Europe program, with a deadline 31st of May 2024.

## Which are the fees

- **2 weeks: €850**
- **1 month: €1500**

*\*Please note that we are a Non-Profit Organization and these costs go towards keeping our infrastructure running.*

*\*\*In the case of artistic duos, costs will count as 2 people if staying in 2 separate rooms, or will have a 50% extra if sharing the room.*

For more information you can write to [info@aadk.es](mailto:info@aadk.es)





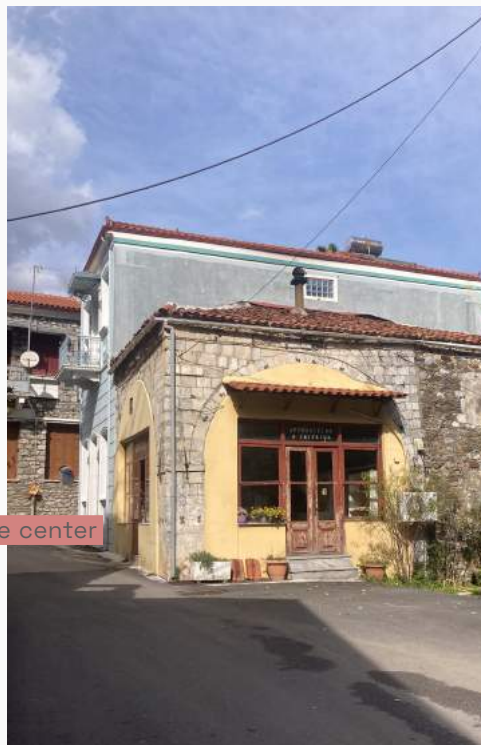
# Location & Context

The Peloponnese has a rich and diverse history dating back thousands of years. In ancient times, it was inhabited by various Greek tribes and was a significant region in the development of Greek civilization. It was home to important city-states such as Sparta and Corinth, which played key roles in shaping Greek culture and politics.

This residency takes place in **Nea Livera**, a village belonging to the Lakonia Region, in the southeastern Peloponnese of ancient Greece. The current **population is about 70 people**. In the village there is a café and an old school that is now a museum.

The village was founded by Pontian Greek refugees who resettled in the area following the population exchange. These settlers brought with them their unique cultural heritage. Traditions, cuisine, music, and language continue to be preserved and celebrated.

Nea Livera belongs to another small village called Kastri, or 'Kastrion', which responds to the Municipality of Sparta.



Photo/ Village center





# Practical Info

The closest airport is **Kalamata Airport**, at approximately 1 hour by car. However, in case of flying to **Athens Airport** you can reach our location by a combination of buses, or by car in an estimated time of 2 hours and 40 minutes. If selected, our team will assist you to find the best way to travel.

**Map of Nea Livera:** [Here](#)

The house where the residency takes place is almost nested into the mountains, with an impressive view to the valley. It has a big terrace for outdoor breakfast and lunch, three individual rooms, a big living room with a chimney, a large kitchen and two bathrooms. The common area is on the lower floor of the house. It has desks and space for indoor practices or gatherings.




Surroundings  
& nearby  
areas









**AADK Spain**  
Research & Contemporary  
Creation

 /aadkspain

 /aadkspain

 /aadk

Organized and Produced



**AADK** / SP

Collaboration

